



Kuriyama Oilfield Layflat Hose & Accessories

*Manufacturer of heavy duty
polyurethane and PVC/Nitrile
hose to the oil and gas industry.*

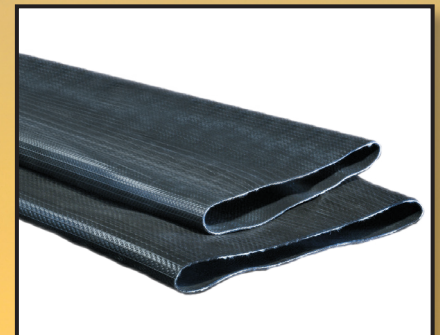
*Complete 660' assemblies in
stock and ready to ship!*

*High quality, ISO 9001 European
design and manufacturing.*

by



A Kuriyama Group
Company



OFTRC Series Polyurethane Discharge Hose Assemblies

General Applications:

- Transfer of freshwater or frackwater

Construction:

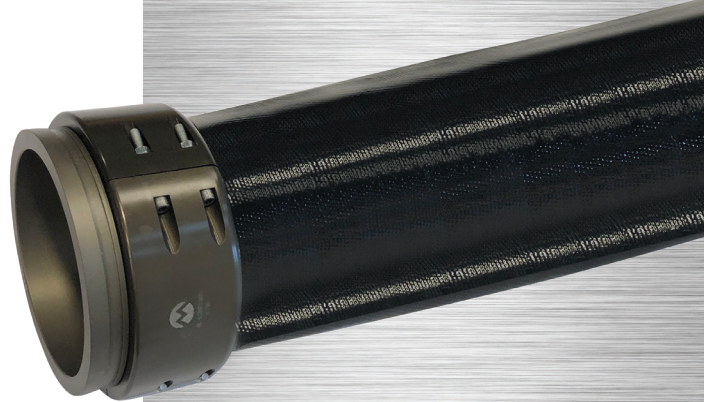
Black polyurethane (TPU) hose using an extruded through-the-weave process with circular woven high tenacity polyester reinforcement.

Service Temperature Range:

-58°F (-50°C) to +150°F (+65°C);
Intermittent service to +175°F (+79°C)

Features and Advantages:

- **Premium Polyurethane (TPU) Material** – Exhibits exceptional resistance to abrasion, allowing for use in applications where severe abrasion is a factor and providing longer service life versus rubber or PVC hoses. Also, exhibits exceptional resistance to oils and petroleum based products.
- **Couplings Included** – Durable and lightweight oilfield hose couplings (AL-LDHC Series) on hose ends.
- **Unique Woven Construction** – Specially designed weave pattern provides resistance to kinking, stretching and twisting. Superior snaking resistance!
- **Longer Lengths** – Manufactured in special 660 foot lengths to reduce possible leaking points.
- **Smooth TPU Tube** – Provides low friction loss.
- **Compact Design** – Flat hose design rolls up into tight coils for easy storage and transport, takes up less space than other hoses.

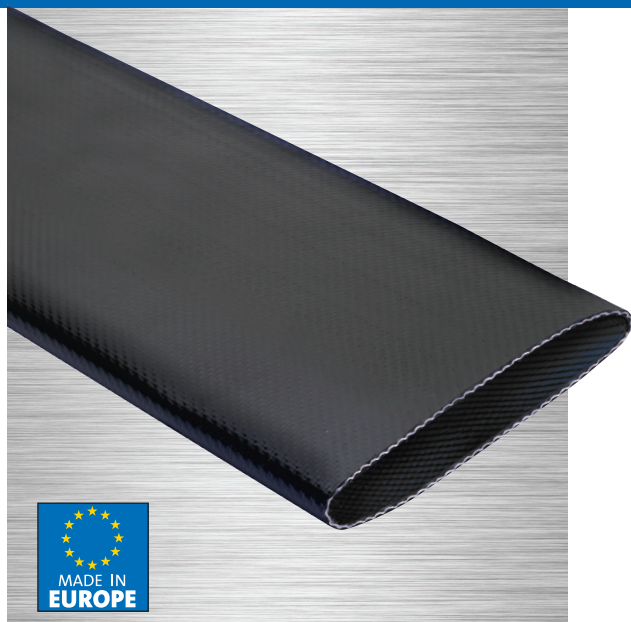


Nominal Specifications

Part Number	Size		Wall Thickness (in)	Working Pressure (psi) at 68°F	Burst Pressure (psi) at 68°F	Coil Length (ft)	Tensile Strength (lbs)	Weight (lbs/ft)
	(in)	(mm)						
OFTRC-1000X660	10	254.0	0.169	200	500	660	100,310	2.82
OFTRC-1200X660	12	304.8	0.185	175	435	660	121,254	3.52
+OFTRCH-1200X660	12	304.8	0.185	200	500	660	154,300	3.63

+ **NOTE:** This is a non-stock product. Minimum order requirements may apply. Contact Kuriyama customer service for details.

Because we continually examine ways to improve our products, we reserve the right to alter specifications without notice.



OFTR Series Polyurethane Discharge Hose

NEW

General Applications:

- Dewatering
- Fluid transfer (see chemical chart)
- Large volume water transfer including fracking
- Manure transfer
- Mining

Construction:

Black polyurethane (TPU) hose using an extruded through-the-weave process with circular woven high tenacity polyester reinforcement.

Service Temperature Range:

-58°F (-50°C) to +150°F (+65°C);
Intermittent service to +175°F (+79°C)

Features and Advantages:

- **Premium Polyurethane (TPU) Material** – Exhibits exceptional resistance to abrasion, allowing for use in applications where severe abrasion is a factor and providing longer service life versus rubber or PVC hoses. Also, exhibits exceptional resistance to oils and petroleum based products.
- **Unique Woven Construction** – Specially designed weave pattern provides resistance to snaking, kinking, stretching and twisting.
- **Longer Lengths** – Manufactured in special 660 foot lengths to reduce possible leaking points.
- **Smooth TPU Tube** – Provides low friction loss.
- **Compact Design** – Flat hose design rolls up into tight coils for easy storage and transport, takes up less space than other hoses.

Nominal Specifications

Series Number	Size		Hose ID		Wall Thickness (in)	Working Pressure (psi) at 68°F	Burst Pressure (psi) at 68°F	Coil Length (ft)	Tensile Strength (lbs)	Weight (lbs/ft)
	(in)	(mm)	(in)	(mm)						
+OFTR-400	4	101.6	4.008	101.8	0.140	320	800	660	26,450	0.90
+OFTR-600	6	152.4	6.000	152.4	0.180	320	800	660	63,950	1.66
OFTR-800	8	203.2	8.100	206.0	0.165	200	600	660	77,200	2.22
OFTR-1000	10	254.0	10.100	256.0	0.169	200	500	660	99,200	2.80
OFTR-1200	12	304.8	12.106	307.5	0.185	175	435	660	121,300	3.43
+OFTRH-1200	12	304.8	12.106	307.5	0.185	200	500	660	154,300	3.55

+ NOTE: This is a non-stock product. Minimum order requirements may apply. Contact Kuriyama customer service for details.

Because we continually examine ways to improve our products, we reserve the right to alter specifications without notice.



OF20B Series Bulk PVC/Nitrile Rubber Discharge Hose

General Applications:

- Transfer of freshwater or frackwater

Construction:

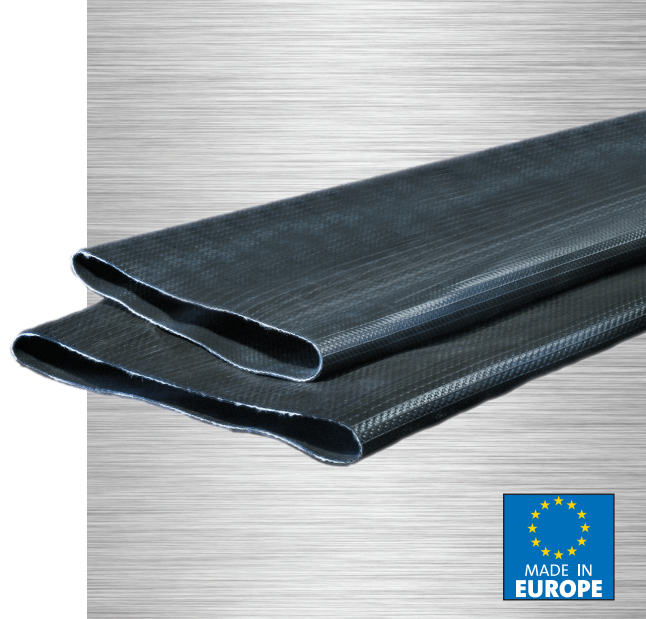
Black PVC/Nitrile hose using an extruded through-the-weave process with circular woven high tenacity polyester reinforcement.

Service Temperature Range:

-20°F (-29°C) to +176°F (+80°C)

Features and Advantages:

- **Proprietary PVC/Nitrile Material** – Specially developed PVC/Nitrile material provides superior abrasion, UV, chemical and oil resistance compared to PVC hoses.
- **Unique Woven Construction** – Specially designed weave pattern provides resistance to kinking, stretching and twisting. Superior snaking resistance!
- **Longer Lengths** – Manufactured in special 660 foot lengths to reduce possible leaking points.
- **Compact Design** – Flat hose design rolls up into tight coils for easy storage and transport, takes up less space than other hoses.



Nominal Specifications

Series Number	Size		Hose ID		Wall Thickness (in)	Working Pressure (psi) at 68°F	Burst Pressure (psi) at 68°F	Coil Length (ft)	Tensile Strength (lbs)	Weight (lbs/ft)
	(in)	(mm)	(in)	(mm)						
OF20B-600	6	152.4	6.063	154.0	0.160	290	725	660	51,600	1.68
OF20B-700	7	177.8	7.126	181.0	0.160	230	580	660	66,150	1.88
OF20B-800	8	203.2	8.091	205.5	0.150	200	500	660	77,150	2.22
OF20B-1000	10	254.0	10.059	255.5	0.150	200	500	660	110,250	2.65
OF20B-1200	12	304.8	12.087	307.0	0.160	155	375	660	101,400	3.43

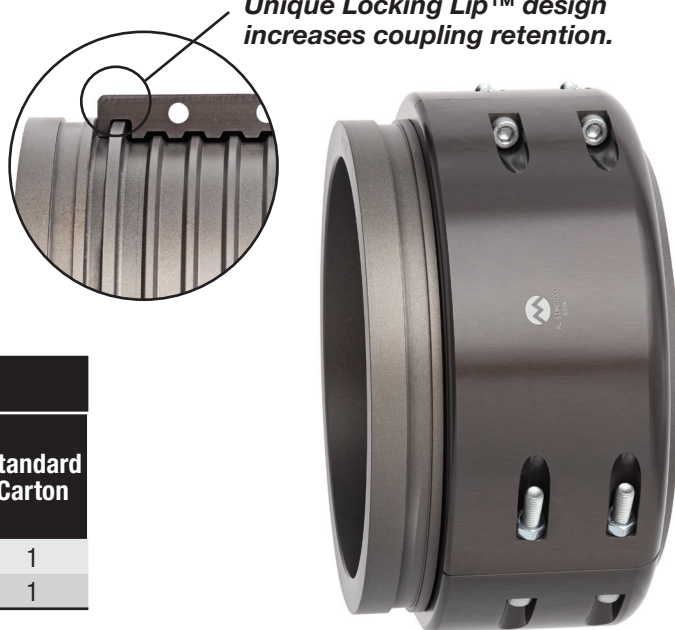
Because we continually examine ways to improve our products, we reserve the right to alter specifications without notice.

Kuriyama Oilfield Couplings & Gaskets

AL-LDHC Series Oilfield Hose Coupling

- Lightweight aluminum with abrasion resistant anodized hard coating
- Multiple collar segments evenly distribute pressure on the hose for even sealing
- Locking Lip™ provides better coupling retention than other designs

*Don't risk a leak!
Unique Locking Lip™ design
increases coupling retention.*



Nominal Specifications

Part Number	Size (in)	Working Pressure (psi) at 68°F	Burst Pressure (psi) at 68°F	Weight Each (lbs)	Standard Carton
AL-LDHC1000	10	200	600	41.20	1
AL-LDHC1200	12	200	600	57.30	1

GEC-B Series Grooved Couplings

- For use with AL-LDHC coupling or grooved end pipe
- Durable ductile iron
- UL listed
- Buna (nitrile) gasket included

Nominal Specifications

Part Number	Size (in)	Weight Each (lbs)	Standard Carton
GEC-B1000	10	26.15	1
GEC-B1200	12	30.65	1



GEB-Buna Grooved Gasket

- Fits GEC-B Series couplings
- Buna (nitrile) material, resistant to oil, gas, and moderately aggressive chemicals

Nominal Specifications

Part Number	Size (in)	Weight Each (lbs)	Standard Carton
GEG-BUNA1000	10	0.771	1
GEG-BUNA1200	12	0.889	1



Because we continually examine ways to improve our products, we reserve the right to alter specifications without notice.

Cautionary Statement

All Products sold and distributed by Kuriyama of America, Inc. are in the nature of commodities and they are sold by published specifications and not for particular purposes, uses or applications. Purchaser shall first determine their suitability for the intended purposes, uses or applications and shall either conduct its own engineering studies or tests, or retain qualified engineers, consultants or testing laboratories and consult with them before determining the proper use, suitability or propriety of the merchandise or Products for the intended purposes, uses or applications.

Kuriyama of America, Inc. (Seller) does not recommend the Products for any particular purpose, use or application, and the Purchaser or user thereof shall assume full responsibility for the suitability, propriety, use and application of the Products. Purchaser shall follow all instructions contained in Seller's catalogs, brochures, technical bulletins and other documents regarding the Products. The Products, including but not limited to, hose, tubing or couplings, may fail due to the use or conveyance of substances at elevated or lowered temperatures or at excessive pressure, the conveyance of abrasive, injurious, flammable, explosive or damaging substances.

Hose or tubing used in bent configurations will be subjected to increased abrasion. Hose clamps or couplings may loosen after initial installation and all sections of hose and tubing including connections, couplings, clamps, conductivity and bonding should be inspected frequently, regularly and consistently, and should be replaced, adjusted or re-tightened for the avoidance of leakage, for the prevention of injuries or damages, and for general safety purposes. Except as indicated in its Limited Warranty, Seller shall not be liable or responsible for direct or indirect injuries or damages caused by or attributed to the failure or malfunction of any Products sold or distributed by it.

Purchasers or users of the Products should frequently and consistently undertake inspections and protective measures with respect to the use and application of Products, which should include the examination of tube and cover, conditions of the hose or tubing, and the identification, repair or replacement of sections showing cracking, blistering, separations, internal and external abrasions, leaking or slipped couplings or connections and make proper proof tests.

Limited Warranty

The Products sold or distributed by Seller are warranted to its customers to be free from defects in material and workmanship at the time of shipment by us, subject to the following provisions. ALL WARRANTY CLAIMS SHALL BE MADE WITHIN SIX (6) MONTHS AFTER SELLER SHIPPED THE PRODUCTS. SELLER'S LIABILITY HEREUNDER IS LIMITED AT SELLER'S EXCLUSIVE DISCRETION, TO 1) THE PURCHASE PRICE OF ANY PRODUCTS PROVING DEFECTIVE; 2) REPAIR OF ANY DEFECTIVE PRODUCT OR PART THEREOF; OR 3) REPLACEMENT OF ANY DEFECTIVE PRODUCT OR PART UPON ITS AUTHORIZED RETURN TO SELLER.

THIS WARRANTY IS IN LIEU OF AND EXCLUDES ALL OTHER WARRANTIES, EXPRESSED, IMPLIED, STATUTORY, OR OTHERWISE CREATED UNDER APPLICABLE LAW INCLUDING, BUT NOT LIMITED TO, THE WARRANTY OF MERCHANTABILITY AND THE WARRANTY OF FITNESS FOR A PARTICULAR PURPOSE. IN NO EVENT SHALL SELLER OR THE MANUFACTURER OF THE PRODUCT BE LIABLE FOR SPECIAL, INCIDENTAL, OR CONSEQUENTIAL DAMAGES, INCLUDING LOSS OF PROFITS, WHETHER OR NOT CAUSED BY OR RESULTING FROM THE NEGLIGENCE OF SELLER AND/OR THE MANUFACTURER OF THE PRODUCT, UNLESS SPECIFICALLY PROVIDED HEREIN. IN ADDITION, THIS WARRANTY SHALL NOT APPLY TO ANY PRODUCTS OR PORTIONS THEREOF WHICH HAVE BEEN SUBJECTED TO ABUSE, MISUSE, IMPROPER INSTALLATION, MAINTENANCE, OR OPERATION, ELECTRICAL FAILURE OR ABNORMAL CONDITIONS, AND TO PRODUCTS WHICH HAVE BEEN TAMPERED WITH, ALTERED, MODIFIED, REPAIRED, REWORKED BY ANYONE NOT APPROVED BY SELLER, OR USED IN ANY MANNER INCONSISTENT WITH THE PROVISIONS OF THE CAUTIONARY STATEMENT ABOVE OR ANY INSTRUCTIONS OR SPECIFICATIONS PROVIDED WITH OR FOR THE PRODUCT.

09/17/18 REV

TIPSA Products Limited Warranty

The products sold or distributed by Seller are warranted to its customers to be free from defects in material and workmanship at the time of shipment by us, subject to the following provisions.

(A) ALL PRODUCTS MANUFACTURED BY TIPSA HAVE A WARRANTY OF 5 YEARS FROM THE ORIGINAL DATE OF INVOICE AGAINST DEFECTS IN MATERIALS AND WORKMANSHIP. (B) ON EVERY COMPLAINT EVENT, TIPSA WILL PROVIDE A COMPLAINT FORM THAT HAS TO BE COMPLETED AND SUBMITTED TO OUR CUSTOMER SERVICE DEPARTMENT TOGETHER WITH THE PRODUCT SAMPLE FOR OUR ANALYSIS. (C) BASED ON THE FINAL TECHNICAL REPORT, THE TIPSA COMMERCIAL DEPARTMENT WILL DECIDE THE REPLACEMENT, CREDIT, OR REPAIR OF THE PRODUCT CLAIMED. (D) THE WARRANTY IS LIMITED TO THE PRODUCT AND DOES NOT CONTEMPLATE ANY LIABILITY, INCLUDING INCIDENTAL, OR CONSEQUENTIAL DAMAGES, INCLUDING LOSS OF PROFITS, WHETHER OR NOT CAUSED BY OR RESULTING FROM THE NEGLIGENCE OF THE MANUFACTURER OF THE PRODUCT. (E) IN ADDITION, THIS WARRANTY SHALL NOT APPLY TO ANY PRODUCTS OR PORTIONS THEREOF, WHICH HAVE BEEN SUBJECTED TO ABUSE, MISUSE, IMPROPER INSTALLATION, MAINTENANCE, OR OPERATION AND ANY ABNORMAL CONDITIONS, AND TO PRODUCTS WHICH HAVE BEEN TAMPERED WITH, ALTERED, MODIFIED, REPAIRED, REWORKED BY ANYONE NOT APPROVED BY TIPSA, OR USED IN ANY MANNER INCONSISTENT WITH THE PROVISIONS OF ANY INSTRUCTIONS, OR SPECIFICATION PROVIDED WITH OR FOR THE PRODUCT.

04/14/20REV



Kuriyama of America, Inc.

Headquarters, Sales Office and Warehouse Location

360 E. State Parkway, Schaumburg, IL 60173-5335

Phone: (847) 755-0360 • Toll-free FAX: (800) 800-0320

International FAX: (847) 885-0996

Web Site: <http://www.kuriyama.com>

E-Mail: sales@kuriyama.com



The trademarks contained in this publication are trademarks of Kuriyama of America, Inc.

CONTACT OUR SALES/WAREHOUSE LOCATIONS BELOW WHICH SERVE YOUR AREA

SOUTHWEST WAREHOUSE
KURIYAMA OF AMERICA, INC.
HOUSTON

200 PORTWALL STREET, SUITE 100
HOUSTON, TX 77029

Phone: (713) 674-8212

Toll Free Phone: (800) 501-6808

FAX: (713) 674-5214

Toll Free FAX: (800) 800-5214

WESTERN WAREHOUSE
KURIYAMA OF AMERICA, INC.
SANTA FE SPRINGS

10749 SHOEMAKER AVENUE
SANTA FE SPRINGS, CA 90670-4039

Phone: (562) 941-4507

FAX: (562) 941-8940

Toll-Free FAX: (800) 326-8940

SOUTHEAST WAREHOUSE
FORTNEY SALES CO., INC.

4221 CANTRELL ROAD NW
ACWORTH, GA 30101

PHONE: (770) 427-6528

FAX: (770) 423-9249

Toll Free FAX: (800) 423-9249

Web Site: www.fortneysales.com

E-Mail: sales@fortneysales.com

EASTERN WAREHOUSE
EASTERN RUBBER & PLASTICS CO., INC.
100 GOLDMAN DR.

PLUMSTED INDUSTRIAL PARK

CREAM RIDGE, NJ 08514

Phone: (609) 758-0100

FAX: (609) 758-0102

Toll Free FAX: (800) 445-7138

Web Site: www.easternrubber.com

E-Mail: sales@easternrubber.com

IN CANADA:

KURI TEC CORPORATION

140 ROY BOULEVARD

BRANTFORD, ON, CANADA N3R 7K2

Phone: (519) 753-6717

FAX: (519) 753-7737

Web Site: <http://www.kuritec.com>

E-Mail: sales@kuritec.com

IN MEXICO:

KURIYAMA DE MEXICO S DE RL DE CV

AV JOSE PALOMO MARTINEZ NO 520-20

BODEGA 5

PARQUE INDUSTRIAL OMOLAP

APODACA, N.L. CP:66633, MÉXICO

Phone: (81) 1086-1870 O 71

Toll-Free: (within Mexico) 01-800-822-52-00

FAX: (81) 1086-1869

Internet: www.kuriyama.com

Correo Electronico: ventas@kuriyama.com



Visit us

www.kuriyama.com

on the Web!