



KURIYAMA INDUSTRIAL RUBBER HOSES

EDITION 1018

Air/Water, Multipurpose Hoses and Fittings



BRAID-LOCK™



Dura-Jack™ Yellow



Redi-Transfer™



Kuriyama of America, Inc.





KURIYAMA INDUSTRIAL RUBBER

Air/Water, Push-On Hoses & Fittings

INDEX

TYPE	DESCRIPTION	PAGE
BRAID-LOCK™	Non-Conductive Braided Construction 300 PSI Push-On Hose.....	3
Cautionary Statement & Limited Warranty		Back Cover
Dura-Jack™ Red	300 PSI Jackhammer Hose Assemblies	10
NEW Dura-Jack™ Yellow	300 PSI Jackhammer Hose Assemblies	11
Garden Hose Fittings		15
Kuri-Clamp™ Worm Gear Clamps		18-19
Push-On Fittings - Brass		16-17
Quick Disconnect Couplings		15
Redi-Fill™	Farm Tank Bulk Hose & Coupled Assemblies	12
Redi-GP™	EPDM Rubber General Purpose Air & Water Hose	8
Redi-Lock® 250	250 PSI Push-on Hose	5
Redi-Lock® 300	Non-Conductive 300 PSI Push-On Hose	4
Redi-Max™	Non-Conductive High Oil-Resistant General Service Hose	6
Redi-MOR™	Medium Oil-Resistant General Service Hose	7
NEW Redi-Transfer™	Red Fuel Oil Discharge Hose	13
Redi-Wash™	150 PSI Contractor's Water Hose Assemblies.....	9
Redi-Weld™	200 PSI Twin Line Welding Hose Assemblies	14





**NEW
SIZE**

Non-Conductive Braided Construction 300 PSI Push-On Hose

General Applications:

- Air tools
- Low pressure pneumatic and hydraulic systems
- Lubricating oils/diesel fuel
- Robotic welders in assembly where weld spatter is present
- Water lines in plastic molding industry

Construction:

- **Tube** – Black Nitrile – RMA Class A oil resistance.
- **Reinforcement** – Braided textile – optimum angle for push-on fitting retention.
- **Cover** – PVC/Nitrile blend, RMA Class A oil resistant and MSHA approved.

Service Temperature Range:

-30°F (-34°C) to +180°F (+82°C)

Note: For Push-On Fittings and Quick Disconnect Couplings refer to pages 15-17 of this catalog.

Features and Advantages:

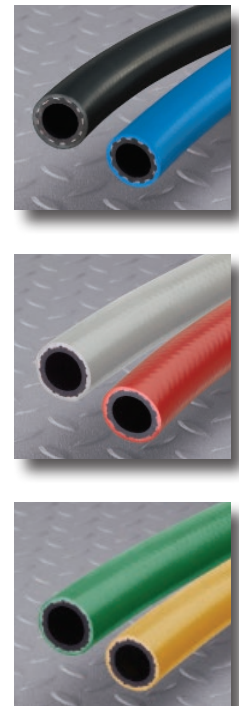
- **Non-Conductive** – Tested to exceed minimum electrical resistance greater than one (1) megohm per inch of hose length at 1000 volts DC.
- **MSHA approved flame resistant cover.**
- **Superior end retention** – no clamps or ferrules required when using Push-On fittings – ends remain attached at 4:1 burst pressure.
- **Easy to couple** – no tools required.
- **RMA Class “A” tube and cover oil resistance.**
- **Wide range of applications where performance and ease of assembly are demanded.**

Branding: BRAID LOCK™ NON CONDUCTIVE 300 PSI (SIZE) ID FLAME RESISTANT MSHA

Packaging: 1/4", 5/16", 3/8" and 1/2" – 500 ft., 5/8", 3/4" and 1" – 200 ft. On plastic reels, max. 3 pcs. *These are nominal reel footage quantities.

Nominal Specifications

Part Number	Color	ID (in)	OD (in)	Working Pressure (psi)	Reel Length (ft)	Weight (lbs/ft)
BL-04BK	Black	1/4	0.48	300	500	0.09
BL-04BU	Blue	1/4	0.48	300	500	0.09
BL-04GR	Green	1/4	0.48	300	500	0.09
BL-04GY	Grey	1/4	0.48	300	500	0.09
BL-04RD	Red	1/4	0.48	300	500	0.09
BL-04YL	Yellow	1/4	0.48	300	500	0.09
BL-05BK	Black	5/16	0.54	300	500	0.10
BL-06BK	Black	3/8	0.61	300	500	0.12
BL-06BU	Blue	3/8	0.61	300	500	0.12
BL-06GR	Green	3/8	0.61	300	500	0.12
BL-06GY	Grey	3/8	0.61	300	500	0.12
BL-06RD	Red	3/8	0.61	300	500	0.12
BL-06YL	Yellow	3/8	0.61	300	500	0.12
BL-08BK	Black	1/2	0.77	300	500	0.17
BL-08BU	Blue	1/2	0.77	300	500	0.17
BL-08GR	Green	1/2	0.77	300	500	0.17
BL-08GY	Grey	1/2	0.77	300	500	0.17
BL-08RD	Red	1/2	0.77	300	500	0.17
BL-08YL	Yellow	1/2	0.77	300	500	0.17
BL-10BK	Black	5/8	0.89	300	200	0.21
BL-10BU	Blue	5/8	0.89	300	200	0.21
BL-10GR	Green	5/8	0.89	300	200	0.21
BL-10GY	Grey	5/8	0.89	300	200	0.21
BL-10RD	Red	5/8	0.89	300	200	0.21
BL-10YL	Yellow	5/8	0.89	300	200	0.21
BL-12BK	Black	3/4	1.02	300	200	0.24
BL-12BU	Blue	3/4	1.02	300	200	0.24
BL-12GR	Green	3/4	1.02	300	200	0.24
BL-12GY	Grey	3/4	1.02	300	200	0.24
BL-12RD	Red	3/4	1.02	300	200	0.24
BL-12YL	Yellow	3/4	1.02	300	200	0.24
BL-16BU	Blue	1	1.31	300	200	0.33
BL-16RD	Red	1	1.31	300	200	0.33



Note: Cut lengths for this product are available from our Kuriyama Schaumburg, IL Warehouse location. Please call (847) 755-0360 or e-mail: sales@kuriyama.com for more information.

Because we continually examine ways to improve our products, we reserve the right to alter specifications or discontinue products without prior notice.



Redi-Lock® 300



**KURIYAMA INDUSTRIAL
RUBBER HOSES**

Non-Conductive 300 PSI Push-On Hose

General Applications:

- Air tools
- Low pressure pneumatic systems
- Robotic welders
- Water, oil and mild chemical solutions
- ★ Not recommended for unleaded gasoline

Construction:

- **Cover** – Black Nitrile/PVC, RMA Class A oil resistant.
- **Reinforcement** – Aramid spiral yarn.
- **Tube** – Black Nitrile, RMA Class A oil resistant.

Service Temperature Range:

-30°F (-34°C) to +180°F (+82°C)

Features and Advantages:

- **Non-Conductive** - Tested to one (1) MEGOHM per inch resistance minimum.
- **MSHA approved flame resistant cover.**
- **Easy to couple.**
- **Long lengths on reels.**

Branding:

REDI-LOCK NON-CONDUCTIVE
300 PSI <size> MADE IN USA MSHA1C - 114/03

Packaging:

Maximum 2 pcs. on reel.
1/4" - 5/8" ID hoses supplied on plastic reels, 3/4"
ID hoses supplied on wooden reels.

Note: For Push-On Fittings and Quick Disconnect Couplings refer to pages 15-17 of this catalog.



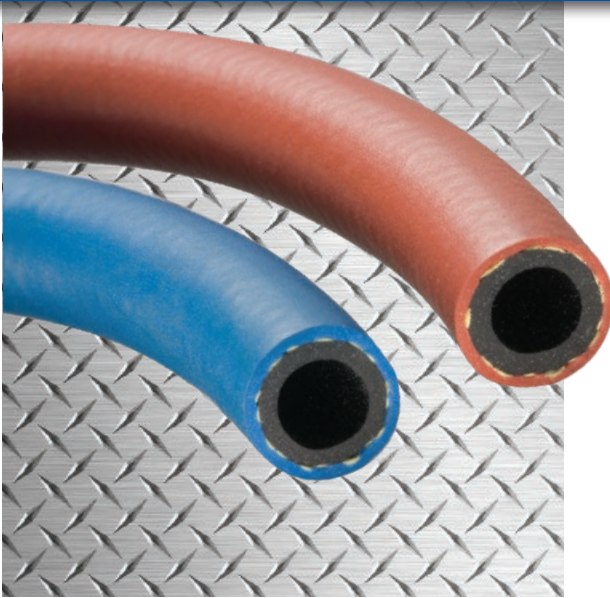
Nominal Specifications

Part Number	Color	ID (in)	OD (in)	Working Pressure (psi)	Reel Length (ft)	Weight (lbs/pc)
REDI-LOC-04X700	Black	1/4	1/2	300	700	70
REDI-LOC-06X700	Black	3/8	5/8	300	700	91
REDI-LOC-08X700	Black	1/2	3/4	300	700	112
REDI-LOC-10X700	Black	5/8	29/32	300	700	161
REDI-LOC-12X700	Black	3/4	1 1/32	300	700	182

Note: Cut lengths for this product are available from our Kuriyama Schaumburg, IL Warehouse location. Please call (847) 755-0360 or e-mail: sales@kuriyama.com for more information.

Because we continually examine ways to improve our products, we reserve the right to alter specifications or discontinue products without prior notice.





250 PSI Push-On Hose

General Applications:

- Air tools
- Hot and cold water
- Low pressure pneumatic systems
- Water, oil and mild chemical solutions
- ★ Not recommended for unleaded gasoline

Construction:

- **Cover** - Red or blue Nitrile/PVC, RMA Class A oil resistant.
- **Reinforcement** - Aramid spiral yarn.
- **Tube** - Black Nitrile, RMA Class A oil resistant.

Service Temperature Range:

-20°F (-29°C) to +180°F (+82°C)

Features and Advantages:

- Easy to couple.
- Long lengths on reels.

Branding:

REDI-LOCK 250 PSI <size> MADE IN USA

Packaging:

Hoses supplied on plastic reels; maximum 2 pcs. on reel.

Note: For Push-On Fittings and Quick Disconnect Couplings refer to pages 15-17 of this catalog.

Nominal Specifications

Part Number	Color	ID (in)	OD (in)	Working Pressure (psi)	Reel Length (ft)	Weight (lbs/pc)
REDI-RED-04X700	Red	1/4	1/2	250	700	63
REDI-RED-06X700	Red	3/8	5/8	250	700	84
REDI-RED-08X700	Red	1/2	3/4	250	700	112
REDI-BLU-04X700	Blue	1/4	1/2	250	700	63
REDI-BLU-06X700	Blue	3/8	5/8	250	700	84
REDI-BLU-08X700	Blue	1/2	3/4	250	700	112

Note: Cut lengths for this product are available from our Kuriyama Schaumburg, IL Warehouse location. Please call (847) 755-0360 or e-mail: sales@kuriyama.com for more information.

Because we continually examine ways to improve our products, we reserve the right to alter specifications or discontinue products without prior notice.



Non-Conductive High Oil-Resistant General Service Hose

General Applications:

- Diesel
- Fuel oil
- Oil
- Other petroleum products
- * Also suitable for handling regular and unleaded gasolines up to 93 octane and bio-diesels up to B20.

Construction:

- **Cover** – Red Nitrile/PVC, RMA Class A oil resistant.
- **Reinforcement** – Spiral polyester yarn.
- **Tube** – Black Nitrile, RMA Class A oil resistant.

Service Temperature Range

- 20°F (-29°C) to +180°F (+82°C)

Features and Advantages:

- Long lengths on reels.
- High oil resistance (Class A) rated tube and cover.
- Non-Conductive - tested to exceed minimum electrical resistance greater than one (1) MEGOHM per inch of hose length at 1000 volts DC.

Branding:

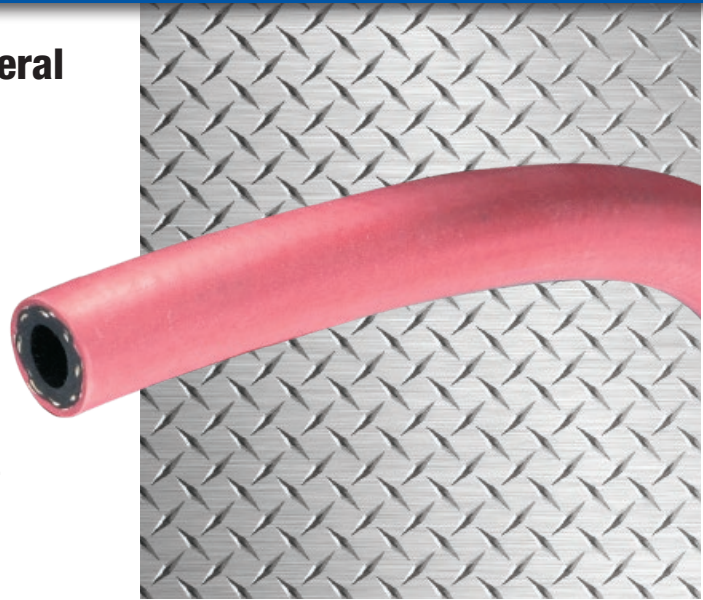
REDI-MAX HIGH OIL RESIST. NON-CONDUCTIVE-SIZE-WP-MADE IN USA

Packaging:

Maximum 2 pcs. on reel.

* Cut lengths of 50 or 100 feet available.

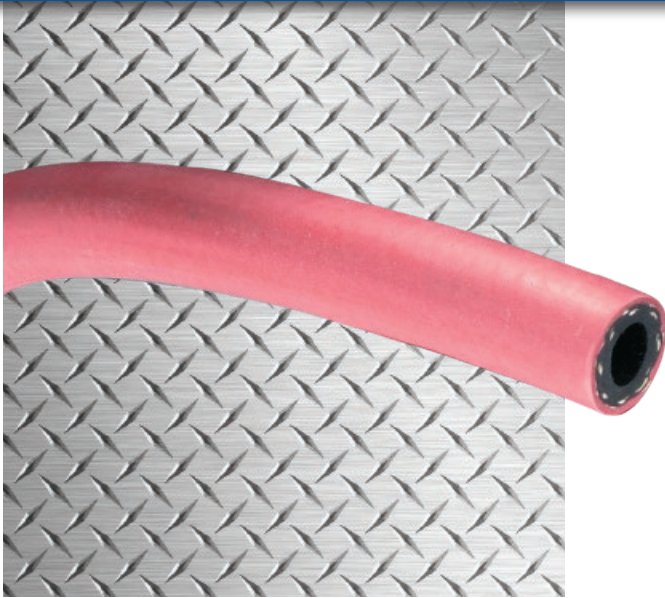
Note: For Quick Disconnect Couplings and Worm Gear Clamps refer to pages 15, 18-19 of this catalog.



Nominal Specifications

Part Number	Color	ID (in)	OD (in)	Working Pressure (psi)	Reel Length (ft)	Weight (lbs/pc)
REDIMAX-025x700	Red	1/4	0.62	300	700	112
REDIMAX-038x700	Red	3/8	0.69	300	700	126
REDIMAX-050x700	Red	1/2	0.84	300	700	175
REDIMAX-075x700	Red	3/4	1.15	300	700	294
REDIMAX-100x700	Red	1	1.43	300	700	441
REDIMAX-125x500	Red	1 1/4	1.78	250	500	405
REDIMAX-150x400	Red	1 1/2	2.03	250	400	380

Because we continually examine ways to improve our products, we reserve the right to alter specifications or discontinue products without prior notice.



Medium Oil-Resistant General Service Hose

General Applications:

- Excellent general purpose hose
- Oil mist applications
- Pneumatic air tool hose

Construction:

- Cover: Red limited oil and ozone-resistant.
- Reinforcement: Spiral polyester yarn.
- Tube: Black Class C medium oil-resistant.
- ★ Not recommended for fuel applications.

Service Temperature Range:

-40°F (-40°C) to +200°F (+93°C)

Features and Advantages:

- Long lengths on reels.

Branding:

MED. OIL RESIST. – SIZE – WP – MADE IN USA

Packaging:

Maximum 2 pcs. on reel.

1/4" – 3/4" ID hoses supplied on plastic reels.

1" – 1 1/2" ID hoses supplied on wooden reels.

* Cut lengths of 25 & 50 feet available on select sizes.

Note: For Quick Disconnect Couplings and Worm Gear Clamps refer to pages 15, 18-19 of this catalog.

Nominal Specifications

Part Number	Color	ID (in)	OD (in)	Working Pressure (psi)	Reel Length (ft)	Weight (lbs/pc)
MORGP-025X700	Red	1/4	1/2	300	700	105
MORGP-031X700	Red	5/16	5/8	300	700	98
MORGP-038X700	Red	3/8	11/16	300	700	126
MORGP-050X700	Red	1/2	27/32	300	700	175
MORGP-062X700	Red	5/8	1	300	700	210
MORGP-075X700	Red	3/4	1 5/32	300	700	259
MORGP-100X700	Red	1	1 7/16	300	700	350
MORGP-125X300	Red	1 1/4	1 3/4	200	300	243
MORGP-150X300	Red	1 1/2	2	200	300	282

Because we continually examine ways to improve our products, we reserve the right to alter specifications or discontinue products without prior notice.



EPDM Rubber General Purpose Air & Water Hose

General Applications:

- Agricultural
- Construction
- Industrial
- Water service lines

Construction:

- **Cover** – Black or red abrasion and ozone-resistant EPDM, limited oil resistance.
- **Reinforcement** – Spiral polyester yarn.
- **Tube** – Black EPDM, limited oil resistance.

Service Temperature Range:

-40°F (-40°C) to +200°F (+93°C)

Features and Advantages:

- Long lengths on reels.

Branding:

GP AIR & WATER – SIZE – WP – MADE IN USA

Note: For Quick Disconnect Couplings and Worm Gear Clamps refer to pages 15, 18-19 of this catalog.



Packaging:

Maximum 2 pcs. on reel.

1/4" – 3/4" ID hoses supplied on plastic reels.

1" – 2" ID hoses supplied on wooden reels.

* Cut lengths of 25 & 50 feet available on select sizes.

Nominal Specifications

Part Number	Color	ID (in)	OD (in)	Working Pressure (psi)	Reel Length (ft)	Weight (lbs/pc)
BEGP-025X700	Black	1/4	1/2	250	700	84
REGP-025X700	Red	1/4	1/2	250	700	84
BEGP-031X700	Black	5/16	19/32	200	700	77
REGP-031X700	Red	5/16	19/32	200	700	84
BEGP-038X700	Black	3/8	11/16	250	700	112
REGP-038X700	Red	3/8	11/16	250	700	119
BEGP-050X700	Black	1/2	27/32	250	700	168
REGP-050X700	Red	1/2	27/32	250	700	175
BEGP-062X700	Black	5/8	15/16	200	700	203
REGP-062X700	Red	5/8	15/16	200	700	210
BEGP-075X700	Black	3/4	1 5/32	250	700	252
REGP-075X700	Red	3/4	1 5/32	250	700	266
BEGP-100X700	Black	1	1 3/8	200	700	343
REGP-100X700	Red	1	1 3/8	200	700	357
BEGP-125X300	Black	1 1/4	1 25/32	200	300	237
REGP-125X300	Red	1 1/4	1 25/32	200	300	243
BEGP-150X300	Black	1 1/2	2	200	300	270
REGP-150X300	Red	1 1/2	2	200	300	285
REGP-200X300	Red	2	2 1/2	200	300	339

Because we continually examine ways to improve our products, we reserve the right to alter specifications or discontinue products without prior notice.



**Black 150 PSI Contractor's Water Hose
Coupled Assemblies**

General Applications:

- Concrete clean-up
- Contractor's water hose
- Garden watering
- Washdown

Construction:

- **Cover** – Black EPDM.
- **Reinforcement** – Polyester yarn.
- **Tube** – Black EPDM.

Service Temperature Range:

-40°F (-40°C) to +180°F (+82°C)

Features and Advantages:

- **A durable hose for industrial washdown applications.**

Branding:

REDI-WASH™ 150 PSI CONTRACTOR'S WATER HOSE MADE IN USA

Packaging:

Brass M X F coupled assembled lengths.



Nominal Specifications

Part Number	Color	ID (in)	OD (in)	Working Pressure (psi)	Reel Length (ft)	Weight (lbs/pc)
REDIWASH-062X50	Black	5/8	0.94	150	50	12.0
REDIWASH-062X100	Black	5/8	0.94	150	100	24.0

Because we continually examine ways to improve our products, we reserve the right to alter specifications or discontinue products without prior notice.





300 PSI Red Cover Jackhammer Hose Assemblies

General Applications:

- A durable quality hose to tackle the rugged application of jackhammer service

Construction:

- **Cover** – Red abrasion and ozone resistant EPDM.
- **Reinforcement** – Spiral polyester yarn.
- **Tube** – Black EPDM.

Service Temperature Range:

-40°F (-40°C) to +200°F (+93°C)

Features and Advantages:

- The cover and tube are made of EPDM to resist ozone, heat and cracking while in service.

Oil Resistance:

Class C - limited oil mist.

Branding:

DURA-JACK™ CRIMPED 300 3/4" MADE IN USA

Packaging:

50 ft. boxed length cartons.



50 ft. assembled lengths.

Please Note: Coupled assemblies are rated at 150 PSI.



Shipped in 50 ft. length cartons.



Assembled using crimped steel fittings.

Nominal Specifications

Part Number	Color	ID (in)	OD (in)	Working Pressure (psi)	Length (ft)	Weight (lbs/pc)
DJCR075X50ABX	Red	3/4	1.15	300	50	41

Because we continually examine ways to improve our products, we reserve the right to alter specifications or discontinue products without prior notice.





50 ft. assembled lengths.

300 PSI Yellow Cover Jackhammer Hose Assemblies

General Applications:

- A durable quality hose to tackle the rugged application of jackhammer service

Construction:

- **Cover** – Yellow abrasion and ozone resistant EPDM.
- **Reinforcement**– Spiral polyester yarn.
- **Tube**– Black EPDM.

Service Temperature Range:

-40°F (-40°C) to +200°F (+93°C)

FEATURES AND ADVANTAGES:

- The cover and tube are made of EPDM to resist ozone, heat and cracking while in service.

Oil Resistance:

Class C - limited oil mist.

Branding:

DURA-JACK™ CRIMPED 300 3/4" MADE IN USA

Packaging:

50 ft. boxed length cartons.

Please Note: Coupled assemblies are rated at 150 PSI.



Shipped in 50 ft. length cartons.



Assembled using crimped steel fittings.

Nominal Specifications

Part Number	Color	ID (in)	OD (in)	Working Pressure (psi)	Length (ft)	Weight (lbs/pc)
YLDJCR075X50ABX	Yellow	3/4	1.15	300	50	41

Because we continually examine ways to improve our products, we reserve the right to alter specifications or discontinue products without prior notice.



Farm Tank Bulk Hose & Coupled Assemblies

General Applications:

- Agricultural equipment fuel filler hose
- Electrical pumps; built-in static wire provides safety
- Farm or barrel-type pumps
- Fuel dispensing hose for construction and industrial equipment

Note: This is not a UL approved hose and should not be used in curb pump hose applications.

Construction:

- **Cover** – Black Class A Nitrile /PVC, high oil resistance.
- **Reinforcement** – Polyester cord with static wire.
- **Tube** – Black Class A Nitrile, high oil resistance.

Service Temperature Range:

-20°F (-29°C) to +160°F (+70°C)

Features and Advantages:

- A durable quality fuel dispensing hose - oil & abrasion resistant.

Branding:

REDI-FILL™ FARM TANK W/STATIC WIRE- SIZE- MADE IN USA

Packaging:

Brass M X M coupled assembled lengths and reels (2 pcs maximum).



Note: 3/4" assemblies packaged 10 per carton; 1" assemblies packaged 5 per carton; or sold individually.

Redi-Fill™ Coupled Assemblies

Nominal Specifications						
Part Number	Color	ID (in)	OD (in)	Working Pressure (psi)	Coil Length (ft)	Weight (lbs/pc)
BLKFT-075X8	Black	3/4	1.13	60	8	3.3
BLKFT-075X10	Black	3/4	1.13	60	10	3.8
BLKFT-075X12	Black	3/4	1.13	60	12	4.0
BLKFT-075X14	Black	3/4	1.13	60	14	5.0
BLKFT-075X15	Black	3/4	1.13	60	15	5.4
BLKFT-075X20	Black	3/4	1.13	60	20	7.0
BLKFT-100X8	Black	1	1.38	60	8	4.8
BLKFT-100X10	Black	1	1.38	60	10	5.8
BLKFT-100X12	Black	1	1.38	60	12	6.7
BLKFT-100X14	Black	1	1.38	60	14	7.5
BLKFT-100X15	Black	1	1.38	60	15	8.0
BLKFT-100X20	Black	1	1.38	60	20	10.5

Redi-Fill™ Bulk Hose on Reels

Nominal Specifications						
Part Number	Color	ID (in)	OD (in)	Working Pressure (psi)	Reel Length (ft)	Weight (lbs/pc)
BLKFT-075X700	Black	3/4	1.13	60	700	203
BLKFT-100X700	Black	1	1.38	60	700	315

Because we continually examine ways to improve our products, we reserve the right to alter specifications or discontinue products without prior notice.



Red Fuel Oil Discharge Hose

General Applications:

- A high quality hose to handle oil, diesel, fuel oil and other petroleum products for home delivery. Also suitable for handling regular and unleaded gasolines up to 93 octane and bio-diesels up to B20.

Construction:

- **Cover** – Red Class A Nitrile/PVC, high oil resistance.
- **Reinforcement** – Spiral polyester yarn with static wire.
- **Tube** – Black Class A Nitrile, high oil resistance.

Service Temperature Range:

-40°F (-40°C) to +212°F (+100°C)

Features and Advantages:

- Long lengths on reels.
- High oil resistance (Class A) rated tube and cover.

Branding:

REDI-TRANSFER FUEL OIL DELIVERY SIZE-WP-MADE IN USA

Packaging:

Cut lengths and bulk reels (maximum 3 pcs. on reel).

Redi-Transfer™ Cut Lengths

Nominal Specifications

Part Number	Color	ID (in)	OD (in)	Working Pressure (psi)	Length (ft)	Weight (lbs/pc)
REDITFR-100x100	RED	1	1.50	250	100	47
REDITFR-100x150	RED	1	1.50	250	150	71
REDITFR-100x200	RED	1	1.50	250	200	94
REDITFR-125x100	RED	1 1/4	1.78	250	100	59
REDITFR-125x125	RED	1 1/4	1.78	250	125	74
REDITFR-125x150	RED	1 1/4	1.78	250	150	89
REDITFR-137x125	RED	1 3/8	1.88	250	125	81
REDITFR-137x150	RED	1 3/8	1.88	250	150	98
REDITFR-150x125	RED	1 1/2	2.09	250	125	100
REDITFR-150x150	RED	1 1/2	2.09	250	150	120
REDITFR-150x175	RED	1 1/2	2.09	250	175	140

Redi-Transfer™ Bulk Hose on Reels

Nominal Specifications

Part Number	Color	ID (in)	OD (in)	Working Pressure (psi)	Reel Length (ft)	Weight (lbs/pc)
REDITFR-100x500	Red	1	1.50	250	500	235
REDITFR-125x450	Red	1 1/4	1.78	250	450	265
REDITFR-137x450	Red	1 3/8	1.88	250	450	293
REDITFR-150x400	Red	1 1/2	2.09	250	400	320

Because we continually examine ways to improve our products, we reserve the right to alter specifications or discontinue products without prior notice.



200 PSI Grade R Twin Line Welding Hose - Coupled Assemblies

General Applications:

- General welding service
- Meets RMA IP-7-2011

Construction:

- **Cover** – Red and green EPDM (ACETYLENE USE ONLY).
- **Reinforcement** – Spiral polyester yarns.
- **Tube** – EPDM.

Service Temperature Range:

-40°F (-40°C) to +180°F (+82°C)

Features and Advantages:

- EPDM tube and cover coupled with brass welding couplings.

Oil Resistance:

Limited (Acetylene only).

Branding:

Redi-Weld™ <Size> Grade R Acetylene only - STD, Duty-KX-Max. WP. 200 PSIG - Meets ARPMS-IP-7-2011 couple with one inch long ferrules made in U.S.A.

Packaging:

Coiled coupled assemblies in 25 and 50 foot lengths and reels (2 pcs. maximum).



Redi-Weld™ Coupled Assemblies

Nominal Specifications

Part Number	Color	ID (in)	Working Pressure (psi)	Coil Length (ft)	Weight (lbs/pc)
REDI-WELD-03X25	Red / Grn	3/16	200	25	5.0
REDI-WELD-03X50	Red / Grn	3/16	200	50	8.8
REDI-WELD-04X25	Red / Grn	1/4	200	25	6.4
REDI-WELD-04X50	Red / Grn	1/4	200	50	12.1
REDI-WELD-05X25	Red / Grn	5/16	200	25	7.6
REDI-WELD-05X50	Red / Grn	5/16	200	50	14.0

Redi-Weld™ Bulk Hose on Reels NEW

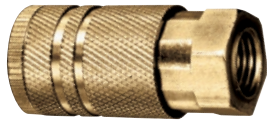
Nominal Specifications

Part Number	Color	ID (in)	Working Pressure (psi)	Reel Length (ft)	Weight (lbs/pc)
REDI-WELD-03X700	Red / Grn	3/16	200	700	105
REDI-WELD-04X700	Red / Grn	1/4	200	700	147

Because we continually examine ways to improve our products, we reserve the right to alter specifications or discontinue products without prior notice.

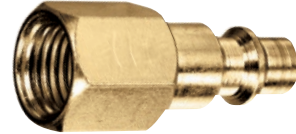


Quick Disconnect Couplings



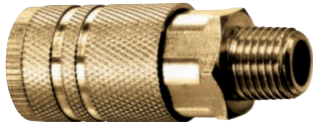
Coupler with Female Thread (NPTF)

Part Number	Body Size (in)	Thread Size (in)	Weight Each (lbs)	Standard Carton
QDAC-4FC	1/4	1/4	0.23	10
QDAC-6FC	1/4	3/8	0.23	10



Plug with Female Thread (NPTF)

Part Number	Body Size (in)	Thread Size (in)	Weight Each (lbs)	Standard Carton
QDAP-4FP	1/4	1/4	0.05	10
QDAP-6FP	1/4	3/8	0.05	10



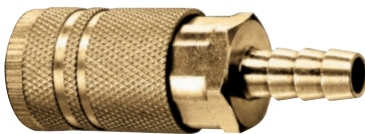
Coupler with Male Thread (NPTF)

Part Number	Body Size (in)	Thread Size (in)	Weight Each (lbs)	Standard Carton
QDAC-4MC	1/4	1/4	0.23	10
QDAC-6MC	1/4	3/8	0.23	10



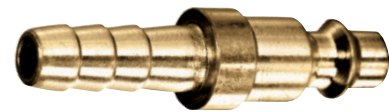
Plug with Male Thread (NPTF)

Part Number	Body Size (in)	Thread Size (in)	Weight Each (lbs)	Standard Carton
QDAP-4MP	1/4	1/4	0.05	10
QDAP-6MP	1/4	3/8	0.05	10



Coupler with Hose Barb

Part Number	Body Size (in)	Barb Size (in)	Weight Each (lbs)	Standard Carton
QDAC-4HC	1/4	1/4	0.23	10
QDAC-6HC	1/4	3/8	0.23	10



Plug with Hose Barb

Part Number	Body Size (in)	Barb Size (in)	Weight Each (lbs)	Standard Carton
QDAP-4HP	1/4	1/4	0.05	10
QDAP-6HP	1/4	3/8	0.05	10

Garden Hose Fittings



Garden Hose Fitting Set

Part Number	Size (in)	Thread	Weight Each (lbs)	Standard Carton
BRGHT050	1/2	GHT	0.25	180
BRGHT062	5/8	GHT	0.25	180
BRGHT075	3/4	GHT	0.25	180
BRNPS100	1	NPS	0.49	120



Female Garden Hose Fitting

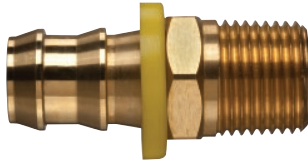
Part Number	Size (in)	Thread	Weight Each (lbs)	Standard Carton
BRGHT-FEM050	1/2	GHT	0.12	360
BRGHT-FEM062	5/8	GHT	0.12	360
BRGHT-FEM075	3/4	GHT	0.12	360
BRNPS-FEM100	1	NPS	0.25	240

Because we continually examine ways to improve our products, we reserve the right to alter specifications or discontinue products without prior notice.



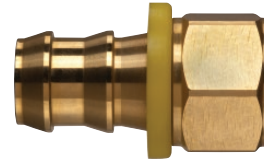


Brass Push-On Fittings



Male Pipe (NPTF Threads)

Part Number	Hose Size (in)	Fitting Size (in)	Thread (in-TPI)	Weight Each (lbs)	Standard Carton
POFMP-0402	1/4	1/8	1/8 - 27	0.031	100
POFMP-0404	1/4	1/4	1/4 - 18	0.044	100
POFMP-0406	1/4	3/8	3/8 - 18	0.055	50
POFMP-0604	3/8	1/4	1/4 - 18	0.053	50
POFMP-0606	3/8	3/8	3/8 - 18	0.071	50
POFMP-0608	3/8	1/2	1/2 - 14	0.119	25
POFMP-0808	1/2	1/2	1/2 - 14	0.121	25
POFMP-1008	5/8	1/2	1/2 - 14	0.143	25
POFMP-1012	5/8	3/4	3/4 - 14	0.190	25
POFMP-1208	3/4	1/2	1/2 - 14	1.960	25
POFMP-1212	3/4	3/4	3/4 - 14	1.940	25



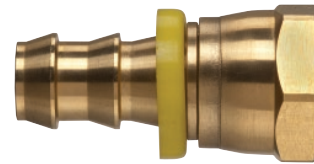
Female Pipe (NPTF Threads)

Part Number	Hose Size (in)	Fitting Size (in)	Thread (in-TPI)	Weight Each (lbs)	Standard Carton
POFFP-0402	1/4	1/8	1/8 - 27	0.029	100
POFFP-0404	1/4	1/4	1/4 - 18	0.049	100
POFFP-0604	3/8	1/4	1/4 - 18	0.055	50
POFFP-0606	3/8	3/8	3/8 - 18	0.064	50
POFFP-0806	1/2	3/8	3/8 - 18	0.077	50
POFFP-0808	1/2	1/2	1/2 - 14	0.099	25
POFFP-1008	5/8	1/2	1/2 - 14	0.119	25
POFFP-1212	3/4	3/4	3/4 - 14	0.234	25



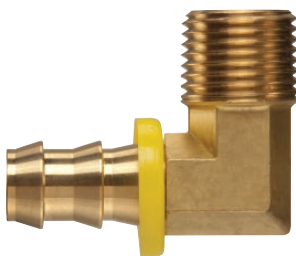
Male Pipe Swivel (NPTF Threads)

Part Number	Hose Size (in)	Fitting Size (in)	Thread (in-TPI)	Weight Each (lbs)	Standard Carton
POFMPS-0404	1/4	1/4	1/4 - 18	0.062	50
POFMPS-0606	3/8	3/8	3/8 - 18	0.090	25
POFMPS-0808	1/2	1/2	1/2 - 14	0.143	25
POFMPS-1212	3/4	3/4	3/4 - 14	0.249	25



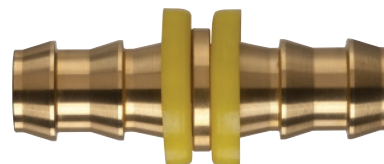
Female Pipe Swivel (NPTF Threads)

Part Number	Hose Size (in)	Fitting Size (in)	Thread (in-TPI)	Weight Each (lbs)	Standard Carton
POFFPS-0404	1/4	1/4	1/4 - 18	0.060	50
POFFPS-0606	3/8	3/8	3/8 - 18	0.093	50
POFFPS-0808	1/2	1/2	1/2 - 14	0.117	50
POFFPS-1212	3/4	3/4	3/4 - 14	0.214	25



Male Pipe 90 Degree Elbow (NPTF Threads)

Part Number	Hose Size (in)	Fitting Size (in)	Thread (in-TPI)	Weight Each (lbs)	Standard Carton
POFMPE-0404	1/4	1/4	1/4 - 18	0.062	50
POFMPE-0606	3/8	3/8	3/8 - 18	0.088	25
POFMPE-0808	1/2	1/2	1/2 - 14	0.165	25
POFMPE-1212	3/4	3/4	3/4 - 14	0.293	25



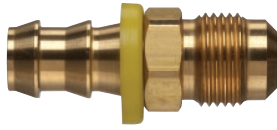
Hose Mender

Part Number	Size (in)	Weight Each (lbs)	Standard Carton
POFMD-0404	1/4	0.026	100
POFMD-0606	3/8	0.046	50
POFMD-0808	1/2	0.073	50
POFMD-1010	5/8	0.130	25
POFMD-1212	3/4	0.159	25

Because we continually examine ways to improve our products, we reserve the right to alter specifications or discontinue products without prior notice.



Brass Push-On Fittings



Male JIC 37 Degree Flare (UNF Threads)

Part Number	Hose Size (in)	Fitting Size (in)	Thread (in-TPI)	Weight Each (lbs)	Standard Carton
POFMJS-0404	1/4	1/4	7/16 - 20	0.035	100
POFMJS-0406	1/4	3/8	9/16 - 18	0.053	100
POFMJS-0606	3/8	3/8	9/16 - 18	0.060	50
POFMJS-0808	1/2	1/2	3/4 - 16	0.121	50
POFMJS-1212	3/4	3/4	1 1/16 - 12	0.291	25



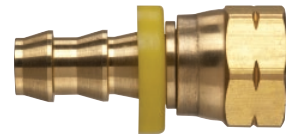
Female JIC 37 Degree Swivel (UNF Threads)

Part Number	Hose Size (in)	Fitting Size (in)	Thread (in-TPI)	Weight Each (lbs)	Standard Carton
POFFJS-0606	3/8	3/8	9/16 - 18	0.064	50
POFFJS-1212	3/4	3/4	1 1/16 - 12	0.220	25



Male SAE 45 Degree Flare (UNF Threads)

Part Number	Hose Size (in)	Fitting Size (in)	Thread (in-TPI)	Weight Each (lbs)	Standard Carton
POFMSA-0404	1/4	1/4	7/16 - 20	0.029	100
POFMSA-0606	3/8	3/8	9/16 - 18	0.071	50
POFMSA-0808	1/2	1/2	3/4 - 16	0.112	50
POFMSA-1212	3/4	3/4	1 1/16 - 12	0.324	25



Female SAE 45 Degree Swivel (UNF Threads)

Part Number	Hose Size (in)	Fitting Size (in)	Thread (in-TPI)	Weight Each (lbs)	Standard Carton
POFFSA-0606	3/8	3/8	9/16 - 18	0.071	100
POFFSA-1212	3/4	3/4	1 1/16 - 12	0.262	25



Female JIC 37 Degree/SAE 45 Degree Swivel (Dual Angle Seat) (UNF Threads)

Part Number	Hose Size (in)	Fitting Size (in)	Thread (in-TPI)	Weight Each (lbs)	Standard Carton
POFFJS-0404	1/4	1/4	7/16 - 20	0.040	100
POFFJS-0808	1/2	1/2	3/4 - 16	0.097	25
POFFJS-0810	1/2	5/8	7/8 - 14	0.130	25
POFFJS-1010	5/8	5/8	7/8 - 14	0.172	25



Male Inverted Flare (UNF Threads)

Part Number	Hose Size (in)	Fitting Size (in)	Thread (in-TPI)	Weight Each (lbs)	Standard Carton
POFMIV-0404	1/4	1/4	7/16 - 24	0.031	100
POFMIV-0405	1/4	5/16	1/2 - 20	0.037	100
POFMIV-0606	3/8	3/8	5/8 - 18	0.071	100
POFMIV-0808	1/2	1/2	3/4 - 16	0.106	50
POFMIV-1010	5/8	5/8	7/8 - 14	0.148	25



Female Inverted Flare (UNF Threads)

Part Number	Hose Size (in)	Fitting Size (in)	Thread (in-TPI)	Weight Each (lbs)	Standard Carton
POFFIV-0404	1/4	1/4	7/16 - 24	0.024	100
POFFIV-0405	1/4	5/16	1/2 - 20	0.026	100
POFFIV-0606	3/8	3/8	5/8 - 18	0.053	50
POFFIV-0808	1/2	1/2	3/4 - 16	0.079	25

Because we continually examine ways to improve our products, we reserve the right to alter specifications or discontinue products without prior notice.

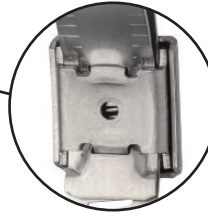


Kuri-Clamp™ Heavy Duty Worm Gear Clamp

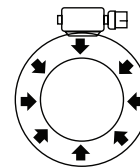


Arched slots for added strength and smoother screw engagement

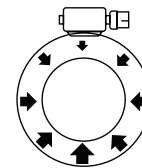
9/16" band width (heavy duty)



Quadra-lock housing-saddle eliminates risk of seam separation. Eliminates "lift & twist."



Kuri-Clamp™



Others

Even Sealing Pressure – Quality controlled to comply with military standards.

WGC-CSHD Series WGC-SSHD Series

General Applications:

- Aircraft
- Industrial

Construction (WGC-CSHD): Four-piece construction consisting of a 9/16" wide, 300 series stainless steel band; plated carbon steel hex screw with 5/16" head and two-piece, 300 series stainless steel housing.

Construction (WGC-SSHD): Four-piece construction consisting of a 9/16" wide, 300 series stainless steel band; stainless steel hex screw with 5/16" head and two-piece, 300 series stainless steel housing.

Features and Advantages:

- **Quadra-Lock Housing** – Four-piece, quadra-lock housing design: added saddle eliminates risk of seam separation, virtually eliminating housing "lift and twist".
- **Evenly Distributed Radial Pressure** – Quality controlled to military standard specifications for even distribution of sealing pressure. Eliminates leakage caused by uneven housings and provides higher sealing pressure with lower applied torque.
- **Arched, Perforated Slots** – Provides for more overall steel between perforations for added band strength and allows for smoother engagement.
- **Heavy Duty Stainless Steel Band** – 300 Series stainless steel band provides durability and superior corrosion resistance. Wider than standard clamps for greater strength.
- **Hex Screw** – Sharply defined hex angles for better gripping power. More threads per screw results in increased torque strength.
- **Meets Industry Standards** – Clamps are SAE J1508 Type F and RoHS compliant.
- **Torque Rating** – Suggested installation torque of 25-37 inch pounds (WGC-CSHD), and 30-45 inch pounds (WGC-SSHD).

Because we continually examine ways to improve our products, we reserve the right to alter specifications or discontinue products without prior notice.



Kuri-Clamp™ Heavy Duty Worm Gear Clamp

Kuri-Clamp™ Heavy Duty Worm Gear Clamp

*Stainless Steel Band & Housing with
Carbon Steel Screw*

Kuri-Clamp™ Heavy Duty Worm Gear Clamp

Stainless Steel Band, Housing, & Screw

Nominal Specifications

Part Number	Size Range (in)	Pieces Per Box	Band Width (in)	Torque Rating (in/lbs)	Weight Per Box (lbs)
WGC-CSHD06	7/16 - 25/32	10	9/16	25-37	0.60
WGC-CSHD08	1/2 - 29/32	10	9/16	25-37	0.60
WGC-CSHD10	9/16 - 1 1/16	10	9/16	25-37	0.60
WGC-CSHD12	11/16 - 1 1/4	10	9/16	25-37	0.60
WGC-CSHD16	13/16 - 1 1/2	10	9/16	25-37	0.70
WGC-CSHD20	13/16 - 1 3/4	10	9/16	25-37	0.70
WGC-CSHD24	1 1/16 - 2	10	9/16	25-37	0.80
WGC-CSHD28	1 5/16 - 2 1/4	10	9/16	25-37	0.80
WGC-CSHD32	1 9/16 - 2 1/2	10	9/16	25-37	0.80
WGC-CSHD36	1 13/16 - 2 3/4	10	9/16	25-37	0.90
WGC-CSHD40	2 1/16 - 3	10	9/16	25-37	0.90
WGC-CSHD44	2 5/16 - 3 1/4	10	9/16	25-37	0.90
WGC-CSHD48	2 9/16 - 3 1/2	10	9/16	25-37	1.00
WGC-CSHD52	2 13/16 - 3 3/4	10	9/16	25-37	1.10
WGC-CSHD56	3 1/16 - 4	10	9/16	25-37	1.10
WGC-CSHD60	3 5/16 - 4 1/4	10	9/16	25-37	1.20
WGC-CSHD64	3 9/16 - 4 1/2	10	9/16	25-37	1.20
WGC-CSHD72	1 7/8 - 5	10	9/16	25-37	1.30
WGC-CSHD80	2 1/2 - 5 1/2	10	9/16	25-37	1.40
WGC-CSHD88	3 1/8 - 6	10	9/16	25-37	1.40
WGC-CSHD96	3 5/8 - 6 1/2	10	9/16	25-37	1.50
WGC-CSHD104	4 1/8 - 7	10	9/16	25-37	1.50
WGC-CSHD128	5 5/8 - 8 1/2	10	9/16	25-37	1.60
WGC-CSHD152	7 1/8 - 10	10	9/16	25-37	1.70
WGC-CSHD188	9 3/8 - 12 1/4	10	9/16	25-37	1.90

* CLAMPS ONLY SOLD IN BOX QUANTITIES

Nominal Specifications

Part Number	Size Range (in)	Pieces Per Box	Band Width (in)	Torque Rating (in/lbs)	Weight Per Box (lbs)
WGC-SSHD06	7/16 - 25/32	10	9/16	30-45	0.60
WGC-SSHD08	1/2 - 29/32	10	9/16	30-45	0.60
WGC-SSHD10	9/16 - 1 1/16	10	9/16	30-45	0.60
WGC-SSHD12	11/16 - 1 1/4	10	9/16	30-45	0.60
WGC-SSHD16	13/16 - 1 1/2	10	9/16	30-45	0.70
WGC-SSHD20	13/16 - 1 3/4	10	9/16	30-45	0.70
WGC-SSHD24	1 1/16 - 2	10	9/16	30-45	0.80
WGC-SSHD28	1 5/16 - 2 1/4	10	9/16	30-45	0.80
WGC-SSHD32	1 9/16 - 2 1/2	10	9/16	30-45	0.80
WGC-SSHD36	1 13/16 - 2 3/4	10	9/16	30-45	0.90
WGC-SSHD40	2 1/16 - 3	10	9/16	30-45	0.90
WGC-SSHD44	2 5/16 - 3 1/4	10	9/16	30-45	0.90
WGC-SSHD48	2 9/16 - 3 1/2	10	9/16	30-45	1.00
WGC-SSHD52	2 13/16 - 3 3/4	10	9/16	30-45	1.10
WGC-SSHD56	3 1/16 - 4	10	9/16	30-45	1.10
WGC-SSHD60	3 5/16 - 4 1/4	10	9/16	30-45	1.20
WGC-SSHD64	3 9/16 - 4 1/2	10	9/16	30-45	1.20
WGC-SSHD72	1 7/8 - 5	10	9/16	30-45	1.30
WGC-SSHD80	2 1/2 - 5 1/2	10	9/16	30-45	1.40
WGC-SSHD88	3 1/8 - 6	10	9/16	30-45	1.40
WGC-SSHD96	3 5/8 - 6 1/2	10	9/16	30-45	1.50
WGC-SSHD104	4 1/8 - 7	10	9/16	30-45	1.50
WGC-SSHD128	5 5/8 - 8 1/2	10	9/16	30-45	1.60
WGC-SSHD152	7 1/8 - 10	10	9/16	30-45	1.70
WGC-SSHD188	9 3/8 - 12 1/4	10	9/16	30-45	1.90

* CLAMPS ONLY SOLD IN BOX QUANTITIES

Because we continually examine ways to improve our products, we reserve the right to alter specifications or discontinue products without prior notice.



Cautionary Statement

All Products sold and distributed by Kuriyama of America, Inc. are in the nature of commodities and they are sold by published specifications and not for particular purposes, uses or applications. Purchaser shall first determine their suitability for the intended purposes, uses or applications and shall either conduct its own engineering studies or tests, or retain qualified engineers, consultants or testing laboratories and consult with them before determining the proper use, suitability or propriety of the merchandise or Products for the intended purposes, uses or applications.

Kuriyama of America, Inc. ("Seller") does not recommend the Products for any particular purpose, use or application, and the Purchaser or user thereof shall assume full responsibility for the suitability, propriety, use and application of the Products. Purchaser shall follow all instructions contained in Seller's catalogs, brochures, technical bulletins and other documents regarding the Products. The Products, including but not limited to, hose, tubing or couplings, may fail due to the use or conveyance of substances at elevated or lowered temperatures or at excessive pressure, the conveyance of abrasive, injurious, flammable, explosive or damaging substances.

Hose or tubing used in bent configurations will be subjected to increased abrasion. Hose clamps or couplings may loosen after initial installation and all sections of hose and tubing including connections, couplings, clamps, conductivity and bonding should be inspected frequently, regularly and consistently, and should be replaced, adjusted or re-tightened for the avoidance of leakage, for the prevention of injuries or damages, and for general safety purposes. Except as indicated in its Limited Warranty, Seller shall not be liable or responsible for direct or indirect injuries or damages caused by or attributed to the failure or malfunction of any Products sold or distributed by it.

Purchasers or users of the Products should frequently and consistently undertake inspections and protective measures with respect to the use and application of Products, which should include the examination of tube and cover, conditions of the hose or tubing, and the identification, repair or replacement of sections showing cracking, blistering, separations, internal and external abrasions, leaking or slipped couplings or connections and make proper proof tests.

Limited Warranty

The Products sold or distributed by Seller are warranted to its customers to be free from defects in material and workmanship at the time of shipment by us, subject to the following provisions. ALL WARRANTY CLAIMS SHALL BE MADE WITHIN SIX (6) MONTHS AFTER SELLER SHIPPED THE PRODUCTS. SELLER'S LIABILITY HEREUNDER IS LIMITED AT SELLER'S EXCLUSIVE DISCRETION, TO 1) THE PURCHASE PRICE OF ANY PRODUCTS PROVING DEFECTIVE; 2) REPAIR OF ANY DEFECTIVE PRODUCT OR PART THEREOF; OR 3) REPLACEMENT OF ANY DEFECTIVE PRODUCT OR PART UPON ITS AUTHORIZED RETURN TO SELLER.

THIS WARRANTY IS IN LIEU OF AND EXCLUDES ALL OTHER WARRANTIES, EXPRESSED, IMPLIED, STATUTORY, OR OTHERWISE CREATED UNDER APPLICABLE LAW INCLUDING, BUT NOT LIMITED TO, THE WARRANTY OF MERCHANTABILITY AND THE WARRANTY OF FITNESS FOR A PARTICULAR PURPOSE. IN NO EVENT SHALL SELLER OR THE MANUFACTURER OF THE PRODUCT BE LIABLE FOR SPECIAL, INCIDENTAL, OR CONSEQUENTIAL DAMAGES, INCLUDING LOSS OF PROFITS, WHETHER OR NOT CAUSED BY OR RESULTING FROM THE NEGLIGENCE OF SELLER AND/OR THE MANUFACTURER OF THE PRODUCT, UNLESS SPECIFICALLY PROVIDED HEREIN. IN ADDITION, THIS WARRANTY SHALL NOT APPLY TO ANY PRODUCTS OR PORTIONS THEREOF WHICH HAVE BEEN SUBJECT TO ABUSE, MISUSE, IMPROPER INSTALLATION, MAINTENANCE, OR OPERATION, ELECTRICAL FAILURE OR ABNORMAL CONDITIONS, AND TO PRODUCTS WHICH HAVE BEEN TAMPERED WITH, ALTERED, MODIFIED, REPAIRED, REWORKED BY ANYONE NOT APPROVED BY SELLER, OR USED IN ANY MANNER INCONSISTENT WITH THE PROVISIONS OF THE "CAUTIONARY STATEMENT" ABOVE OR ANY INSTRUCTIONS OR SPECIFICATIONS PROVIDED WITH OR FOR THE PRODUCT. 05/03/21 REV

Distributed by:



Kuriyama of America, Inc.

Headquarters, Sales Office and Warehouse Location

360 E. State Parkway, Schaumburg, IL 60173-5335

Phone: (847) 755-0360 • Toll-free FAX: (800) 800-0320

International FAX: (847) 885-0996

Website: www.kuriyama.com • Email: sales@kuriyama.com



CONTACT OUR SALES/WAREHOUSE LOCATIONS BELOW WHICH SERVE YOUR AREA

SOUTHWEST WAREHOUSE

KURIYAMA OF AMERICA, INC.

– HOUSTON

200 Portwall Street, Suite 100

HOUSTON, TX 77029

Phone: (713) 674-8212

Toll Free Phone: (800) 501-6808

FAX: (713) 674-5214

Toll Free FAX: (800) 800-5214

E-Mail: sales@kuriyama.com

WESTERN WAREHOUSE

KURIYAMA OF AMERICA, INC.

– SANTA FE SPRINGS

10749 SHOEMAKER AVENUE

SANTA FE SPRINGS, CA 90670-4039

Phone: (562) 941-4507

FAX: (562) 941-8940

Toll-Free FAX: (800) 326-8940

E-Mail: sales@kuriyama.com

SOUTHEAST WAREHOUSE

FORTNEY SALES CO., INC.

4221 Cantrell Road NW

Acworth, GA 30101

Phone: (770) 427-6528

FAX: (770) 423-9249

Toll Free FAX: (800) 423-9249

Web Site: www.fortneysales.com

E-Mail: sales@fortneysales.com

EASTERN WAREHOUSE

EASTERN RUBBER & PLASTICS CO., INC.

100 GOLDMAN DR.

PLUMSTED INDUSTRIAL PARK

CREAM RIDGE, NJ 08514

Phone: (609) 758-0100

FAX: (609) 758-0102

Toll Free FAX: (800) 445-7138

Web Site: www.easternrubber.com

E-Mail: sales@easternrubber.com

IN MEXICO:

KURIYAMA DE MÉXICO S DE RL DE CV

AV JOSE PALOMO MARTINEZ NO 520-20 BODEGA 5

PARQUE INDUSTRIAL OMOLAP

APODACA, N.L. CP:66633, MÉXICO

Telefonos: (81) 1086-1870 0 71

Lada sin Costo 01 800 822 52 00

FAX: (81) 1086-1869

Internet: www.kuriyama.com

Correo Electronico: ventas@kuriyama.com