



ENDURE™

Air Brake Tubing and Fittings



**BUILT FOR THE
LONG HAUL**



KURIYAMA
OF AMERICA, INC.

EDITION 0622



ENDURE™

151 Series (Type B), 251 Series (Type A) DOT Air Brake Tubing

General Applications:

- Auxiliary air systems
- Trailer air brake systems
- Truck, bus and commercial vehicle air brake systems

Construction: Specially designed polyester compounds

Service Temperature Range: -85°F (-65°C) to +200°F (+93°C)

Features and Advantages:

- **Superior Flexibility** – Highly engineered polyester material exhibits improved flexibility versus traditional nylon tubing.
- **Excellent Resistance** – Excellent resistance to abrasion, gasoline, diesel fuel, road salt and deicing compounds.
- **Industry Leading Impact Strength and Vibration Cracking Resistance** – Engineered formulation retains its flexibility and resists impact cracking in both high heat and sub-zero cold weather conditions; providing longer service life than traditional nylon tubing.
- **Exceeds Industry Performance Standards** – Far surpasses traditional nylon tubing for heat aging and heated oil aging, while retaining its superior performance and flexibility over lower temperatures than traditional nylon tubing.
- **Easy Installation** – Greater flexibility allows for easier installation reducing time, effort and installer fatigue.
- **Weather Resistant** – Heat and light stabilized for superior UV resistance and long service life. Resists the cracking that can result from damaging UV light.

Compliances:

- Meets and exceeds DOT FMVSS 106
- Meets and exceeds performance requirements of SAE J844



Because we continually examine ways to improve our products, we reserve the right to alter specifications or discontinue products without prior notice.

Part Numbering System

151 BK - 06 x 500

| Type | Color | OD Size | Length |
|--------------------|-----------|------------|-------------|
| 251 Non-Reinforced | BK Black | 02 1/8" | 100 100 ft |
| 151 Reinforced | BL Blue | 02.5 5/32" | 250 250 ft |
| | GR Green | 03 3/16" | 500 500 ft |
| | OR Orange | 04 1/4" | 1K 1,000 ft |
| | RD Red | 05 5/16" | 2K 2,000 ft |
| | YE Yellow | 06 3/8" | |
| | | 08 1/2" | |
| | | 10 5/8" | |
| | | 12 3/4" | |



251 Series (Type A) Endure™ Non-Reinforced Air Brake Tubing

Nominal Specifications

| Series Number | Size Code | Nominal OD (in) | Nominal ID (in) | Nominal Wall (in) | Min. Burst Pressure (psi) at 70°F (20°C) | Min. Bend Radius (in) at 70°F (20°C) | Standard Lengths (ft) | | Package Weight (lbs) | |
|---------------|-----------|-----------------|-----------------|-------------------|--|--------------------------------------|-----------------------|------|----------------------|------|
| | | | | | | | Spool | Coil | Spool | Coil |
| 251XX | 02 | 1/8 | 0.079 | 0.023 | 1,000 | 0.37 | 2,000 | 100 | 8.0 | 0.4 |
| 251XX | 02.5 | 5/32 | 0.092 | 0.032 | 1,200 | 0.50 | 1,000 | 100 | 7.0 | 0.7 |
| 251XX | 03 | 3/16 | 0.117 | 0.035 | 1,200 | 0.75 | 1,000 | 100 | 9.5 | 1.0 |
| 251XX | 04 | 1/4 | 0.170 | 0.040 | 1,200 | 1.00 | 1,000 | 100 | 14.5 | 1.5 |
| 251XX | 05 | 5/16 | 0.232 | 0.040 | 1,000 | 1.25 | 500 | 100 | 9.5 | 1.9 |

Color Codes (XX): BK = Black, BL = Blue, GR = Green, OR = Orange, RD = Red, YE = Yellow

151 Series (Type B) Endure™ Reinforced Air Brake Tubing

Nominal Specifications

| Series Number | Size Code | Nominal OD (in) | Nominal ID (in) | Nominal Wall (in) | Min. Burst Pressure (psi) at 70°F (20°C) | Min. Bend Radius (in) at 70°F (20°C) | Standard Lengths (ft) | | Package Weight (lbs) | |
|---------------|-----------|-----------------|-----------------|-------------------|--|--------------------------------------|-----------------------|------|----------------------|------|
| | | | | | | | Spool | Coil | Spool | Coil |
| 151XX | 06 | 3/8 | 0.251 | 0.062 | 1,400 | 1.5 | 500 | 100 | 17.0 | 3.4 |
| 151XX | 08 | 1/2 | 0.376 | 0.062 | 950 | 2.5 | 500 | 100 | 23.0 | 4.6 |
| 151XX | 10 | 5/8 | 0.441 | 0.094 | 900 | 3.0 | 250 | 100 | 22.0 | 8.8 |
| 151XX | 12 | 3/4 | 0.566 | 0.094 | 850 | 3.5 | 250 | 100 | 27.0 | 10.8 |

Color Codes (XX): BK = Black, BL = Blue, GR = Green, OR = Orange, RD = Red, YE = Yellow

Because we continually examine ways to improve our products, we reserve the right to alter specifications or discontinue products without prior notice.

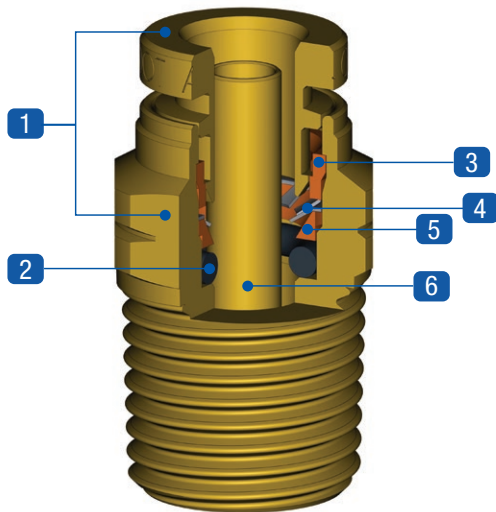
ENDURE™ Push-To-Connect Fittings

General Applications:

- Pneumatic circuits for truck and trailers: air suspension, braking systems, transmissions, locking doors and windows, seat adjustment, instrumentation, air conditioning systems, horn, wiper motors, valves, cylinders and accessories.
- Suitable for all air assisted applications except those designed for use between frame and axle or between towed and towing vehicles.

Construction:

Brass housing with polyethylene holding ring and nitrile (NBR) seals.



- 1** Body and Release – Brass UNI EN 12164 CW614N - UNI EN 12165 CW617N
- 2** Seals – NBR (Low Temperature)
- 3** Holding Ring – Resin (PEI)
- 4** Gripping Collet – Stainless Steel AISI 301
- 5** Protection Ring – Resin (PEI)
- 6** Tube – Tube Support (in)

Recommended Tubing:

Designed to work with Endure™ Air Brake tubing or other tubing that complies with DOT FMVSS 106 and meets the performance requirements of SAE J844.

Max. Pressure: 290 PSI

Vacuum Rating: 29 inHg

Temperature Range:
-58°F (-50°C) to +212°F (+100°C)

Available Fitting Sizes

| Tubing Size | NPTF | | | | |
|-------------|------|------|------|------|------|
| | 1/8" | 1/4" | 3/8" | 1/2" | 3/4" |
| 1/4" | X | X | X | | |
| 3/8" | X | X | X | X | |
| 1/2" | | X | X | X | |
| 5/8" | | | X | X | X |
| 3/4" | | | | X | X |

Part Numbering System

DOT-BR MC-06 04

Endure™ DOT

Brass

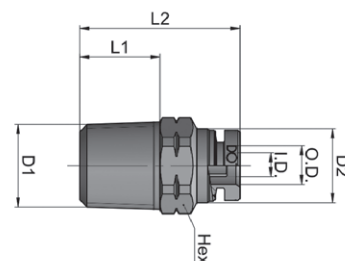
| | Fitting Style |
|-------|------------------------|
| MC | Male Connector |
| FC | Female Connector |
| ME90 | Male Elbow 90° |
| ME90S | Male Elbow 90° Swivel |
| ME45S | Male Elbow 45° Swivel |
| MBTS | Male Branch Tee Swivel |
| MRTS | Male Run Tee Swivel |
| UN | Union |
| BH | Bulk Head Union |
| UNE90 | Union Elbow 90° |
| UNT | Union Tee |

| Size: Tube | |
|------------|------|
| 04 | 1/4" |
| 06 | 3/8" |
| 08 | 1/2" |
| 10 | 5/8" |
| 12 | 3/4" |

| Size: NPT/Tube | |
|----------------|------|
| 02 | 1/8" |
| 04 | 1/4" |
| 06 | 3/8" |
| 08 | 1/2" |
| 10 | 5/8" |
| 12 | 3/4" |

Because we continually examine ways to improve our products, we reserve the right to alter specifications or discontinue products without prior notice.

Straight Fittings



Male Straight

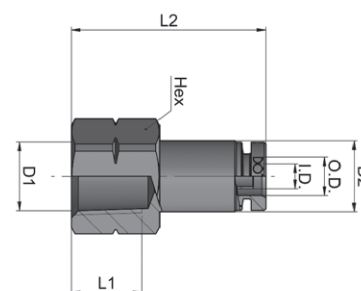
DOT-BRMC Series

Nominal Specifications

| Part Number | Description | Tube OD (in) | Tube† ID (in) | D1 NPTF (in) | D2 (in) | L1 (in) | L2 (in) | HEX (in) | Weight Each (lbs) | *Pieces Per Package |
|---------------|-----------------------------|--------------|---------------|--------------|---------|---------|---------|----------|-------------------|---------------------|
| DOT-BRMC-0402 | MALE CONN 1/4 TB X 1/8 NPTF | 1/4 | .165 | 1/8 | 0.472 | .335 | 0.925 | 1/2 | 0.026 | 25 |
| DOT-BRMC-0404 | MALE CONN 1/4 TB X 1/4 NPTF | 1/4 | .165 | 1/4 | 0.472 | .512 | 1.024 | 9/16 | 0.044 | 25 |
| DOT-BRMC-0406 | MALE CONN 1/4 TB X 3/8 NPTF | 1/4 | .165 | 3/8 | 0.472 | .512 | 1.063 | 11/16 | 0.074 | 25 |
| DOT-BRMC-0602 | MALE CONN 3/8 TB X 1/8 NPTF | 3/8 | .244 | 1/8 | 0.630 | .335 | 1.161 | 11/16 | 0.053 | 25 |
| DOT-BRMC-0604 | MALE CONN 3/8 TB X 1/4 NPTF | 3/8 | .244 | 1/4 | 0.630 | .512 | 1.299 | 11/16 | 0.067 | 25 |
| DOT-BRMC-0606 | MALE CONN 3/8 TB X 3/8 NPTF | 3/8 | .244 | 3/8 | 0.630 | .512 | 1.043 | 11/16 | 0.063 | 25 |
| DOT-BRMC-0608 | MALE CONN 3/8 TB X 1/2 NPTF | 3/8 | .244 | 1/2 | 0.630 | .669 | 1.240 | 7/8 | 0.133 | 25 |
| DOT-BRMC-0804 | MALE CONN 1/2 TB X 1/4 NPTF | 1/2 | .362 | 1/4 | 0.787 | .512 | 1.406 | 13/16 | 0.089 | 25 |
| DOT-BRMC-0806 | MALE CONN 1/2 TB X 3/8 NPTF | 1/2 | .362 | 3/8 | 0.787 | .512 | 1.209 | 13/16 | 0.077 | 25 |
| DOT-BRMC-0808 | MALE CONN 1/2 TB X 1/2 NPTF | 1/2 | .362 | 1/2 | 0.787 | .669 | 1.248 | 7/8 | 0.112 | 25 |
| DOT-BRMC-1006 | MALE CONN 5/8 TB X 3/8 NPTF | 5/8 | .433 | 3/8 | 0.925 | .512 | 1.555 | 1 | 0.156 | 10 |
| DOT-BRMC-1008 | MALE CONN 5/8 TB X 1/2 NPTF | 5/8 | .433 | 1/2 | 0.925 | .669 | 1.496 | 1 | 0.141 | 10 |
| DOT-BRMC-1208 | MALE CONN 3/4 TB X 1/2 NPTF | 3/4 | .559 | 1/2 | 1.043 | .669 | 1.791 | 1 1/16 | 0.191 | 10 |
| DOT-BRMC-1212 | MALE CONN 3/4 TB X 3/4 NPTF | 3/4 | .559 | 3/4 | 1.043 | .669 | 1.535 | 1 1/16 | 0.197 | 10 |

† Note: The "Tube ID (in)" column heading refers to "Tube Support ID (in)"

*Only sold in package quantities



Female Straight

DOT-BRFC Series

Nominal Specifications

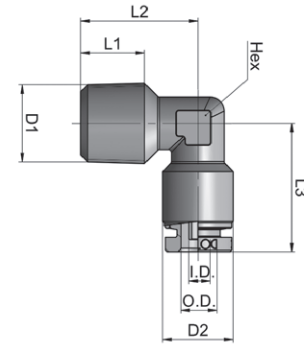
| Part Number | Description | Tube OD (in) | Tube† ID (in) | D1 NPTF (in) | D2 (in) | L1 (in) | L2 (in) | HEX (in) | Weight Each (lbs) | *Pieces Per Package |
|---------------|-------------------------------|--------------|---------------|--------------|---------|---------|---------|----------|-------------------|---------------------|
| DOT-BRFC-0402 | FEMALE CONN 1/4 TB X 1/8 NPTF | 1/4 | .165 | 1/8 | .472 | .335 | 1.122 | 1/2 | 0.035 | 25 |
| DOT-BRFC-0404 | FEMALE CONN 1/4 TB X 1/4 NPTF | 1/4 | .165 | 1/4 | .472 | .492 | 1.299 | 11/16 | 0.063 | 25 |
| DOT-BRFC-0604 | FEMALE CONN 3/8 TB X 1/4 NPTF | 3/8 | .244 | 1/4 | .630 | .492 | 1.378 | 11/16 | 0.049 | 25 |
| DOT-BRFC-0606 | FEMALE CONN 3/8 TB X 3/8 NPTF | 3/8 | .244 | 3/8 | .630 | .492 | 1.378 | 13/16 | 0.089 | 25 |
| DOT-BRFC-0608 | FEMALE CONN 3/8 TB X 1/2 NPTF | 3/8 | .244 | 1/2 | .630 | .492 | 1.516 | 1 | 0.138 | 25 |
| DOT-BRFC-0806 | FEMALE CONN 1/2 TB X 3/8 NPTF | 1/2 | .362 | 3/8 | .787 | .472 | 1.445 | 13/16 | 0.116 | 25 |
| DOT-BRFC-0808 | FEMALE CONN 1/2 TB X 1/2 NPTF | 1/2 | .362 | 1/2 | .787 | .472 | 1.543 | 1 | 0.096 | 25 |

† Note: The "Tube ID (in)" column heading refers to "Tube Support ID (in)"

*Only sold in package quantities

Because we continually examine ways to improve our products, we reserve the right to alter specifications or discontinue products without prior notice.

Elbow Fittings



Male Elbow 90°

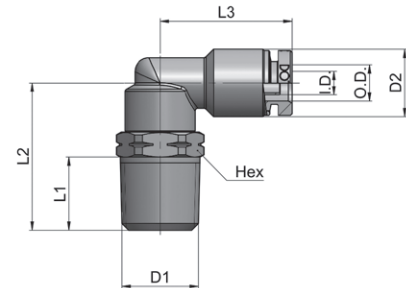
DOT-BRME90 Series

Nominal Specifications

| Part Number | Description | Tube OD (in) | Tube† ID (in) | D1 NPTF (in) | D2 (in) | L1 (in) | L2 (in) | L3 (in) | HEX (mm) | Weight Each (lbs) | *Pieces Per Package |
|-----------------|-------------------------------|--------------|---------------|--------------|---------|---------|---------|---------|----------|-------------------|---------------------|
| DOT-BRME90-0402 | MALE ELB 90 1/4 TB X 1/8 NPTF | 1/4 | .165 | 1/8 | .472 | .331 | .630 | 0.866 | 10 | 0.032 | 25 |
| DOT-BRME90-0404 | MALE ELB 90 1/4 TB X 1/4 NPTF | 1/4 | .165 | 1/4 | .472 | .433 | .787 | 0.866 | 10 | 0.044 | 25 |
| DOT-BRME90-0604 | MALE ELB 90 3/8 TB X 1/4 NPTF | 3/8 | .244 | 1/4 | .630 | .472 | .886 | 1.024 | 14 | 0.072 | 25 |
| DOT-BRME90-0606 | MALE ELB 90 3/8 TB X 3/8 NPTF | 3/8 | .244 | 3/8 | .630 | .433 | .886 | 1.024 | 14 | 0.079 | 25 |

† Note: The "Tube ID (in)" column heading refers to "Tube Support ID (in)"

*Only sold in package quantities



Male Elbow 90° Swivel

DOT-BRME90S Series

Nominal Specifications

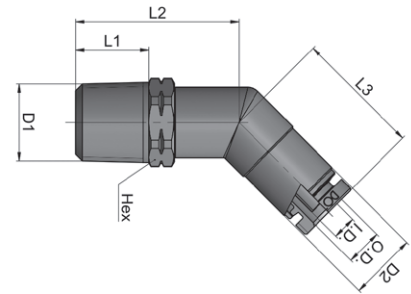
| Part Number | Description | Tube OD (in) | Tube† ID (in) | D1 NPTF (in) | D2 (in) | L1 (in) | L2 (in) | L3 (in) | HEX (in) | Weight Each (lbs) | *Pieces Per Package |
|------------------|--------------------------------------|--------------|---------------|--------------|---------|---------|---------|---------|----------|-------------------|---------------------|
| DOT-BRME90S-0402 | MALE ELB 90 SWIVEL 1/4 TB X 1/8 NPTF | 1/4 | .165 | 1/8 | 0.472 | .335 | 0.835 | 0.925 | 1/2 | 0.046 | 25 |
| DOT-BRME90S-0404 | MALE ELB 90 SWIVEL 1/4 TB X 1/4 NPTF | 1/4 | .165 | 1/4 | 0.472 | .512 | 1.031 | 0.925 | 9/16 | 0.056 | 25 |
| DOT-BRME90S-0406 | MALE ELB 90 SWIVEL 1/4 TB X 3/8 NPTF | 1/4 | .165 | 3/8 | 0.472 | .512 | 1.051 | 0.925 | 11/16 | 0.071 | 25 |
| DOT-BRME90S-0602 | MALE ELB 90 SWIVEL 3/8 TB X 1/8 NPTF | 3/8 | .244 | 1/8 | 0.630 | .335 | 0.945 | 1.063 | 11/16 | 0.091 | 25 |
| DOT-BRME90S-0604 | MALE ELB 90 SWIVEL 3/8 TB X 1/4 NPTF | 3/8 | .244 | 1/4 | 0.630 | .512 | 1.122 | 1.063 | 11/16 | 0.091 | 25 |
| DOT-BRME90S-0606 | MALE ELB 90 SWIVEL 3/8 TB X 3/8 NPTF | 3/8 | .244 | 3/8 | 0.630 | .512 | 1.122 | 1.063 | 11/16 | 0.091 | 25 |
| DOT-BRME90S-0608 | MALE ELB 90 SWIVEL 3/8 TB X 1/2 NPTF | 3/8 | .244 | 1/2 | 0.630 | .669 | 1.339 | 1.063 | 7/8 | 0.091 | 25 |
| DOT-BRME90S-0804 | MALE ELB 90 SWIVEL 1/2 TB X 1/4 NPTF | 1/2 | .362 | 1/4 | 0.787 | .512 | 1.260 | 1.169 | 13/16 | 0.162 | 25 |
| DOT-BRME90S-0806 | MALE ELB 90 SWIVEL 1/2 TB X 3/8 NPTF | 1/2 | .362 | 3/8 | 0.787 | .512 | 1.260 | 1.169 | 13/16 | 0.151 | 25 |
| DOT-BRME90S-0808 | MALE ELB 90 SWIVEL 1/2 TB X 1/2 NPTF | 1/2 | .362 | 1/2 | 0.787 | .669 | 1.437 | 1.169 | 7/8 | 0.181 | 25 |
| DOT-BRME90S-1008 | MALE ELB 90 SWIVEL 5/8 TB X 1/2 NPTF | 5/8 | .433 | 1/2 | 0.945 | .669 | 1.555 | 1.417 | 7/8 | 0.241 | 10 |
| DOT-BRME90S-1012 | MALE ELB 90 SWIVEL 5/8 TB X 3/4 NPTF | 5/8 | .433 | 3/4 | 0.945 | .669 | 1.555 | 1.417 | 1 1/16 | 0.275 | 10 |
| DOT-BRME90S-1208 | MALE ELB 90 SWIVEL 3/4 TB X 1/2 NPTF | 3/4 | .559 | 1/2 | 1.063 | .669 | 1.555 | 1.496 | 7/8 | 0.288 | 10 |
| DOT-BRME90S-1212 | MALE ELB 90 SWIVEL 3/4 TB X 3/4 NPTF | 3/4 | .559 | 3/4 | 1.063 | .669 | 1.555 | 1.496 | 1 1/16 | 0.325 | 10 |

† Note: The "Tube ID (in)" column heading refers to "Tube Support ID (in)"

*Only sold in package quantities

Because we continually examine ways to improve our products, we reserve the right to alter specifications or discontinue products without prior notice.

Elbow Fittings



Male Elbow 45° Swivel

DOT-BRME45S Series

Nominal Specifications

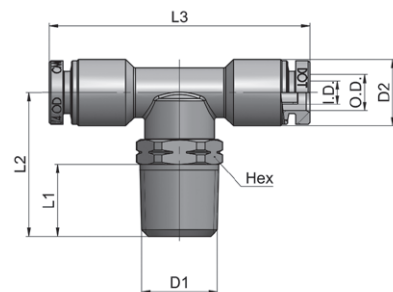
| Part Number | Description | Tube OD (in) | Tube [†] ID (in) | D1 NPTF (in) | D2 (in) | L1 (in) | L2 (in) | L3 (in) | HEX (in) | Weight Each (lbs) | *Pieces Per Package |
|------------------|--------------------------------------|--------------|---------------------------|--------------|---------|---------|---------|---------|----------|-------------------|---------------------|
| DOT-BRME45S-0402 | MALE ELB 45 SWIVEL 1/4 TB X 1/8 NPTF | 1/4 | .165 | 1/8 | .472 | .335 | 0.906 | 0.886 | 1/2 | 0.059 | 25 |
| DOT-BRME45S-0404 | MALE ELB 45 SWIVEL 1/4 TB X 1/4 NPTF | 1/4 | .165 | 1/4 | .472 | .512 | 1.102 | 0.886 | 9/16 | 0.072 | 25 |
| DOT-BRME45S-0604 | MALE ELB 45 SWIVEL 3/8 TB X 1/4 NPTF | 3/8 | .244 | 1/4 | .630 | .512 | 1.142 | 1.024 | 11/16 | 0.116 | 25 |
| DOT-BRME45S-0606 | MALE ELB 45 SWIVEL 3/8 TB X 3/8 NPTF | 3/8 | .244 | 3/8 | .630 | .512 | 1.161 | 1.024 | 11/16 | 0.119 | 25 |
| DOT-BRME45S-0608 | MALE ELB 45 SWIVEL 3/8 TB X 1/2 NPTF | 3/8 | .244 | 1/2 | .630 | .669 | 1.378 | 1.024 | 7/8 | 0.159 | 25 |
| DOT-BRME45S-0806 | MALE ELB 45 SWIVEL 1/2 TB X 3/8 NPTF | 1/2 | .362 | 3/8 | .787 | .512 | 1.260 | 1.130 | 13/16 | 0.172 | 25 |
| DOT-BRME45S-0808 | MALE ELB 45 SWIVEL 1/2 TB X 1/2 NPTF | 1/2 | .362 | 1/2 | .787 | .669 | 1.437 | 1.130 | 7/8 | 0.200 | 25 |

† Note: The "Tube ID (in)" column heading refers to "Tube Support ID (in)"

*Only sold in package quantities

Because we continually examine ways to improve our products, we reserve the right to alter specifications or discontinue products without prior notice.

Tee Fittings



Male Branch Tee Swivel

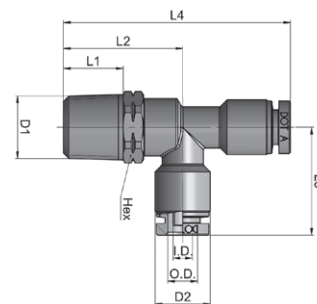
DOT-BRMBTS Series

Nominal Specifications

| Part Number | Description | Tube OD (in) | Tube† ID (in) | D1 NPTF (in) | D2 (in) | L1 (in) | L2 (in) | L3 (in) | HEX (in) | Weight Each (lbs) | *Pieces Per Package |
|-----------------|--------------------------------------|--------------|---------------|--------------|---------|---------|---------|---------|----------|-------------------|---------------------|
| DOT-BRMBTS-0402 | MALE BR TEE SWIVEL 1/4 TB X 1/8 NPTF | 1/4 | .165 | 1/8 | .472 | .335 | 0.835 | 1.850 | 1/2 | 0.064 | 25 |
| DOT-BRMBTS-0404 | MALE BR TEE SWIVEL 1/4 TB X 1/4 NPTF | 1/4 | .165 | 1/4 | .472 | .512 | 1.031 | 1.850 | 9/16 | 0.075 | 25 |
| DOT-BRMBTS-0406 | MALE BR TEE SWIVEL 1/4 TB X 3/8 NPTF | 1/4 | .165 | 3/8 | .472 | .512 | 1.051 | 1.850 | 11/16 | 0.091 | 25 |
| DOT-BRMBTS-0604 | MALE BR TEE SWIVEL 3/8 TB X 1/4 NPTF | 3/8 | .244 | 1/4 | .630 | .512 | 1.122 | 2.126 | 11/16 | 0.134 | 25 |
| DOT-BRMBTS-0606 | MALE BR TEE SWIVEL 3/8 TB X 3/8 NPTF | 3/8 | .244 | 3/8 | .630 | .512 | 1.122 | 2.126 | 11/16 | 0.135 | 25 |
| DOT-BRMBTS-0608 | MALE BR TEE SWIVEL 3/8 TB X 1/2 NPTF | 3/8 | .244 | 1/2 | .630 | .669 | 1.339 | 2.126 | 7/8 | 0.178 | 25 |
| DOT-BRMBTS-0804 | MALE BR TEE SWIVEL 1/2 TB X 1/4 NPTF | 1/2 | .362 | 1/4 | .787 | .512 | 1.260 | 2.339 | 13/16 | 0.213 | 25 |
| DOT-BRMBTS-0806 | MALE BR TEE SWIVEL 1/2 TB X 3/8 NPTF | 1/2 | .362 | 3/8 | .787 | .512 | 1.260 | 2.339 | 13/16 | 0.201 | 25 |
| DOT-BRMBTS-0808 | MALE BR TEE SWIVEL 1/2 TB X 1/2 NPTF | 1/2 | .362 | 1/2 | .787 | .669 | 1.437 | 2.339 | 7/8 | 0.228 | 25 |

† Note: The "Tube ID (in)" column heading refers to "Tube Support ID (in)"

*Only sold in package quantities



Male Run Tee Swivel

DOT-BRMRTS Series

Nominal Specifications

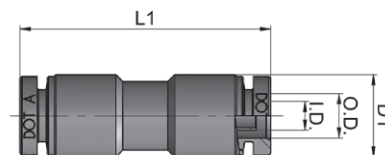
| Part Number | Description | Tube OD (in) | Tube† ID (in) | D1 NPTF (in) | D2 (in) | L1 (in) | L2 (in) | L3 (in) | L4 (in) | HEX (in) | Weight Each (lbs) | *Pieces Per Package |
|-----------------|--------------------------------------|--------------|---------------|--------------|---------|---------|---------|---------|---------|----------|-------------------|---------------------|
| DOT-BRMRTS-0402 | MALE RN TEE SWIVEL 1/4 TB X 1/8 NPTF | 1/4 | .165 | 1/8 | .472 | .335 | 0.835 | 0.925 | 1.752 | 1/2 | 0.076 | 25 |
| DOT-BRMRTS-0404 | MALE RN TEE SWIVEL 1/4 TB X 1/4 NPTF | 1/4 | .165 | 1/4 | .472 | .512 | 1.031 | 0.925 | 1.949 | 9/16 | 0.074 | 25 |
| DOT-BRMRTS-0406 | MALE RN TEE SWIVEL 1/4 TB X 3/8 NPTF | 1/4 | .165 | 3/8 | .472 | .512 | 1.051 | 0.925 | 1.969 | 11/16 | 0.091 | 25 |
| DOT-BRMRTS-0604 | MALE RN TEE SWIVEL 3/8 TB X 1/4 NPTF | 3/8 | .244 | 1/4 | .630 | .512 | 1.122 | 1.063 | 2.185 | 11/16 | 0.132 | 25 |
| DOT-BRMRTS-0606 | MALE RN TEE SWIVEL 3/8 TB X 3/8 NPTF | 3/8 | .244 | 3/8 | .630 | .512 | 1.122 | 1.063 | 2.185 | 11/16 | 0.135 | 25 |
| DOT-BRMRTS-0608 | MALE RN TEE SWIVEL 3/8 TB X 1/2 NPTF | 3/8 | .244 | 1/2 | .630 | .669 | 1.339 | 1.063 | 2.402 | 7/8 | 0.134 | 25 |
| DOT-BRMRTS-0804 | MALE RN TEE SWIVEL 1/2 TB X 1/4 NPTF | 1/2 | .362 | 1/4 | .787 | .512 | 1.260 | 1.169 | 2.429 | 13/16 | 0.213 | 25 |
| DOT-BRMRTS-0806 | MALE RN TEE SWIVEL 1/2 TB X 3/8 NPTF | 1/2 | .362 | 3/8 | .787 | .512 | 1.260 | 1.169 | 2.429 | 13/16 | 0.199 | 25 |
| DOT-BRMRTS-0808 | MALE RN TEE SWIVEL 1/2 TB X 1/2 NPTF | 1/2 | .362 | 1/2 | .787 | .669 | 1.437 | 1.169 | 2.606 | 7/8 | 0.227 | 25 |

† Note: The "Tube ID (in)" column heading refers to "Tube Support ID (in)"

*Only sold in package quantities

Because we continually examine ways to improve our products, we reserve the right to alter specifications or discontinue products without prior notice.

Union Fittings



Union

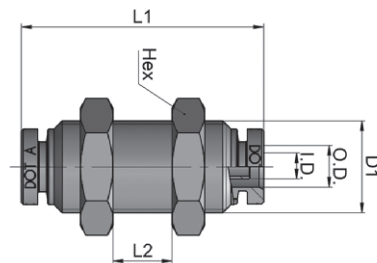
DOT-BRUN Series

Nominal Specifications

| Part Number | Description | Tube OD (in) | Tube [†] ID (in) | D1 (in) | L1 (in) | Weight Each (lbs) | *Pieces Per Package |
|---------------|-----------------------|--------------|---------------------------|---------|---------|-------------------|---------------------|
| DOT-BRUN-0404 | UNION 1/4 TB X 1/4 TB | 1/4 | .165 | 0.472 | 1.323 | 0.064 | 25 |
| DOT-BRUN-0606 | UNION 3/8 TB X 3/8 TB | 3/8 | .244 | 0.630 | 1.520 | 0.069 | 25 |
| DOT-BRUN-0808 | UNION 1/2 TB X 1/2 TB | 1/2 | .362 | 0.787 | 1.709 | 0.201 | 25 |
| DOT-BRUN-1010 | UNION 5/8 TB X 5/8 TB | 5/8 | .433 | 0.945 | 2.047 | 0.172 | 10 |
| DOT-BRUN-1212 | UNION 3/4 TB X 3/4 TB | 3/4 | .559 | 1.102 | 2.244 | 0.225 | 10 |

† Note: The "Tube ID (in)" column heading refers to "Tube Support ID (in)"

*Only sold in package quantities



Bulkhead Union

DOT-BRBH Series

Nominal Specifications

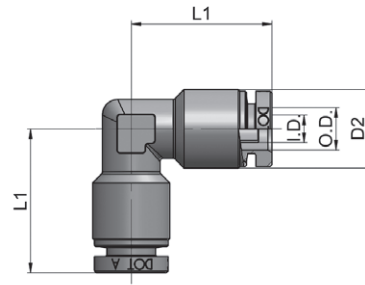
| Part Number | Description | Tube OD (in) | Tube [†] ID (in) | D1 Thread Size (mm) x TP (mm) | L1 (in) | L2 (in) | HEX (mm) | Weight Each (lbs) | *Pieces Per Package |
|---------------|--------------------------------|--------------|---------------------------|-------------------------------|---------|---------|----------|-------------------|---------------------|
| DOT-BRBH-0404 | BULKHEAD UNION 1/4 TB X 1/4 TB | 1/4 | .165 | M14x1 | 1.457 | .571 | 18 | 0.039 | 25 |
| DOT-BRBH-0606 | BULKHEAD UNION 3/8 TB X 3/8 TB | 3/8 | .244 | M18x1 | 1.614 | .689 | 22 | 0.131 | 25 |
| DOT-BRBH-0808 | BULKHEAD UNION 1/2 TB X 1/2 TB | 1/2 | .362 | M22x1.5 | 1.709 | .728 | 26 | 0.188 | 25 |
| DOT-BRBH-1010 | BULKHEAD UNION 5/8 TB X 5/8 TB | 5/8 | .433 | M26x1.5 | 2.047 | .866 | 32 | 0.334 | 10 |

† Note: The "Tube ID (in)" column heading refers to "Tube Support ID (in)"

*Only sold in package quantities

Because we continually examine ways to improve our products, we reserve the right to alter specifications or discontinue products without prior notice.

Union Fittings



Union Elbow 90°

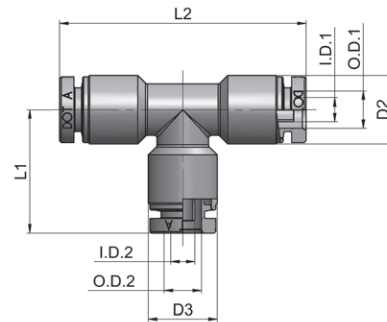
DOT-BRUNE90 Series

Nominal Specifications

| Part Number | Description | Tube OD (in) | Tube [†] ID (in) | D2 (in) | L1 (in) | Weight Each (lbs) | *Pieces Per Package |
|------------------|------------------------------|--------------|---------------------------|---------|---------|-------------------|---------------------|
| DOT-BRUNE90-0404 | UNION ELB 90 1/4 TB X 1/4 TB | 1/4 | .165 | .472 | 0.866 | 0.040 | 25 |
| DOT-BRUNE90-0606 | UNION ELB 90 3/8 TB X 3/8 TB | 3/8 | .244 | .630 | 1.024 | 0.084 | 25 |
| DOT-BRUNE90-0808 | UNION ELB 90 1/2 TB X 1/2 TB | 1/2 | .362 | .787 | 1.110 | 0.135 | 25 |
| DOT-BRUNE90-1010 | UNION ELB 90 5/8 TB X 5/8 TB | 5/8 | .433 | .945 | 1.398 | 0.228 | 10 |

† Note: The "Tube ID (in)" column heading refers to "Tube Support ID (in)"

*Only sold in package quantities



Union Tee

DOT-BRUNT Series

Nominal Specifications

| Part Number | Description | Tube OD1 (in) | Tube [†] ID1 (in) | Tube OD2 (in) | Tube [†] ID2 (in) | D2 (in) | D3 (in) | L1 (in) | L2 (in) | Weight Each (lbs) | *Pieces Per Package |
|----------------|---------------------------|---------------|----------------------------|---------------|----------------------------|---------|---------|---------|---------|-------------------|---------------------|
| DOT-BRUNT-0404 | UNION TEE 1/4 TB X 1/4 TB | 1/4 | .165 | 1/4 | .165 | .472 | .472 | 0.846 | 1.693 | 0.055 | 25 |
| DOT-BRUNT-0606 | UNION TEE 3/8 TB X 3/8 TB | 3/8 | .244 | 3/8 | .244 | .630 | .630 | 1.004 | 2.008 | 0.116 | 25 |
| DOT-BRUNT-0604 | UNION TEE 3/8 TB X 1/4 TB | 3/8 | .244 | 1/4 | .165 | .630 | .472 | 0.945 | 2.008 | 0.106 | 25 |
| DOT-BRUNT-0808 | UNION TEE 1/2 TB X 1/2 TB | 1/2 | .362 | 1/2 | .362 | .787 | .787 | 1.063 | 2.220 | 0.184 | 25 |
| DOT-BRUNT-0806 | UNION TEE 1/2 TB X 3/8 TB | 1/2 | .362 | 3/8 | .244 | .787 | .630 | 1.102 | 2.220 | 0.178 | 25 |
| DOT-BRUNT-1010 | UNION TEE 5/8 TB X 5/8 TB | 5/8 | .433 | 5/8 | .433 | .945 | .945 | 1.398 | 2.795 | 0.359 | 10 |

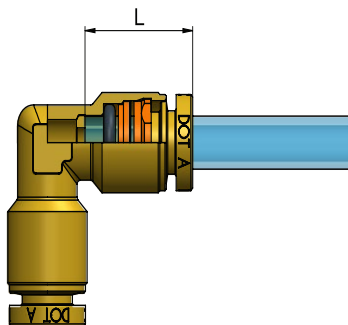
† Note: The "Tube ID (in)" column heading refers to "Tube Support ID (in)"

*Only sold in package quantities

Because we continually examine ways to improve our products, we reserve the right to alter specifications or discontinue products without prior notice.

Push-To-Connect Fittings

Tubing Insertion Depth



| Tube OD | L |
|---------|-------|
| 1/4" | .642" |
| 3/8" | .720" |
| 1/2" | .775" |
| 5/8" | .917" |
| 3/4" | .988" |

Assembly Instructions

1. Cut the tube square (with a hose cutter) making sure that there are no burrs and that the tube is round.
2. Insert the tube into the fitting until it bottoms.

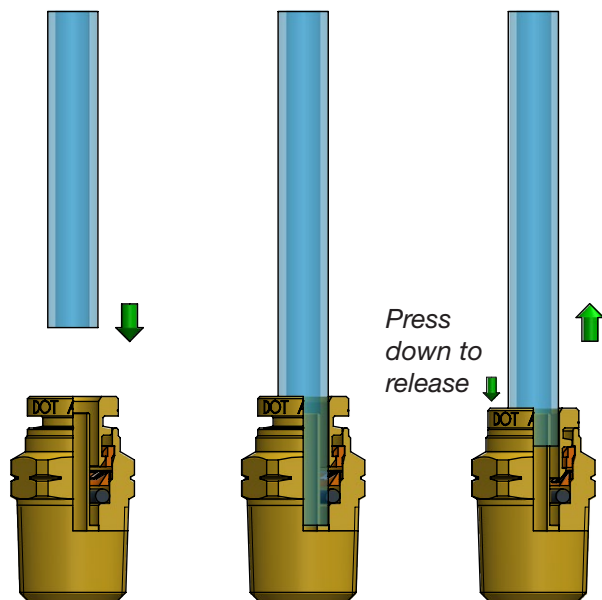
Tube release

While pressing on the release ring, pull the tube from the fitting.

! Once the tubing is connected to the fitting, make sure that the tubing is not pulled or stretched and that the minimum bend radius stated in the tubing section of this catalog is not exceeded.

To prevent accidental tube release, be certain that nothing comes in contact with the release ring. Any load on the release ring may cause an unwanted disconnection.

To tighten NPTF threads, please refer to the following torque chart.



| Thread | Norm Reference | Tightening Torque (ft - lb) | | | |
|---------------------|-------------------|-----------------------------|------|------|------|
| | | 1/8" | 1/4" | 3/8" | 1/2" |
| NPTF PTFE coated | ANSI/ASME B1.20.3 | 2.58 | 3.32 | 5.16 | 8.85 |

Because we continually examine ways to improve our products, we reserve the right to alter specifications or discontinue products without prior notice.

Cautionary Statement

All Products sold and distributed by Kuriyama of America, Inc. are in the nature of commodities and they are sold by published specifications and not for particular purposes, uses or applications. Purchaser shall first determine their suitability for the intended purposes, uses or applications and shall either conduct its own engineering studies or tests, or retain qualified engineers, consultants or testing laboratories and consult with them before determining the proper use, suitability or propriety of the merchandise or Products for the intended purposes, uses or applications.

Kuriyama of America, Inc. ("Seller") does not recommend the Products for any particular purpose, use or application, and the Purchaser or user thereof shall assume full responsibility for the suitability, propriety, use and application of the Products. Purchaser shall follow all instructions contained in Seller's catalogs, brochures, technical bulletins and other documents regarding the Products. The Products, including but not limited to, hose, tubing or couplings, may fail due to the use or conveyance of substances at elevated or lowered temperatures or at excessive pressure, the conveyance of abrasive, injurious, flammable, explosive or damaging substances.

Hose or tubing used in bent configurations will be subjected to increased abrasion. Hose clamps or couplings may loosen after initial installation and all sections of hose and tubing including connections, couplings, clamps, conductivity and bonding should be inspected frequently, regularly and consistently, and should be replaced, adjusted or re-tightened for the avoidance of leakage, for the prevention of injuries or damages, and for general safety purposes. Except as indicated in its Limited Warranty, Seller shall not be liable or responsible for direct or indirect injuries or damages caused by or attributed to the failure or malfunction of any Products sold or distributed by it.

Purchasers or users of the Products should frequently and consistently undertake inspections and protective measures with respect to the use and application of Products, which should include the examination of tube and cover, conditions of the hose or tubing, and the identification, repair or replacement of sections showing cracking, blistering, separations, internal and external abrasions, leaking or slipped couplings or connections and make proper proof tests.

Limited Warranty

The Products sold or distributed by Seller are warranted to its customers to be free from defects in material and workmanship at the time of shipment by us, subject to the following provisions. ALL WARRANTY CLAIMS SHALL BE MADE WITHIN SIX (6) MONTHS AFTER SELLER SHIPPED THE PRODUCTS. SELLER'S LIABILITY HEREUNDER IS LIMITED AT SELLER'S EXCLUSIVE DISCRETION, TO 1) THE PURCHASE PRICE OF ANY PRODUCTS PROVING DEFECTIVE; 2) REPAIR OF ANY DEFECTIVE PRODUCT OR PART THEREOF; OR 3) REPLACEMENT OF ANY DEFECTIVE PRODUCT OR PART UPON ITS AUTHORIZED RETURN TO SELLER.

THIS WARRANTY IS IN LIEU OF AND EXCLUDES ALL OTHER WARRANTIES, EXPRESSED, IMPLIED, STATUTORY, OR OTHERWISE CREATED UNDER APPLICABLE LAW INCLUDING, BUT NOT LIMITED TO, THE WARRANTY OF MERCHANTABILITY AND THE WARRANTY OF FITNESS FOR A PARTICULAR PURPOSE. IN NO EVENT SHALL SELLER OR THE MANUFACTURER OF THE PRODUCT BE LIABLE FOR SPECIAL, INCIDENTAL, OR CONSEQUENTIAL DAMAGES, INCLUDING LOSS OF PROFITS, WHETHER OR NOT CAUSED BY OR RESULTING FROM THE NEGLIGENCE OF SELLER AND/OR THE MANUFACTURER OF THE PRODUCT, UNLESS SPECIFICALLY PROVIDED HEREIN. IN ADDITION, THIS WARRANTY SHALL NOT APPLY TO ANY PRODUCTS OR PORTIONS THEREOF WHICH HAVE BEEN SUBJECTED TO ABUSE, MISUSE, IMPROPER INSTALLATION, MAINTENANCE, OR OPERATION, ELECTRICAL FAILURE OR ABNORMAL CONDITIONS, AND TO PRODUCTS WHICH HAVE BEEN TAMPERED WITH, ALTERED, MODIFIED, REPAIRED, REWORKED BY ANYONE NOT APPROVED BY SELLER, OR USED IN ANY MANNER INCONSISTENT WITH THE PROVISIONS OF THE "CAUTIONARY STATEMENT" ABOVE OR ANY INSTRUCTIONS OR SPECIFICATIONS PROVIDED WITH OR FOR THE PRODUCT. 05/03/21 REV

Distributed by:



KURIYAMA
OF AMERICA, INC.

Since 1968

HEADQUARTERS, SALES OFFICE AND WAREHOUSE

360 E. State Parkway, Schaumburg, IL 60173-5335
Phone: (847) 755-0360 • Toll-free Fax: (800) 800-0320
International Fax: (847) 885-0996



kuriyama.com



sales@kuriyama.com



The trademarks contained in this publication are trademarks of Kuriyama of America, Inc.

CONTACT OUR SALES/WAREHOUSE LOCATIONS BELOW WHICH SERVE YOUR AREA

SOUTHWEST WAREHOUSE

KURIYAMA OF AMERICA, INC.

– HOUSTON

200 Portwall Street, Suite 100
HOUSTON, TX 77029

Phone: (713) 674-8212

Toll Free Phone: (800) 501-6808

FAX: (713) 674-5214

Toll Free FAX: (800) 800-5214

E-Mail: sales@kuriyama.com

WESTERN WAREHOUSE

KURIYAMA OF AMERICA, INC.

– SANTA FE SPRINGS

10749 SHOEMAKER AVENUE

SANTA FE SPRINGS, CA 90670-4039

Phone: (562) 941-4507

FAX: (562) 941-8940

Toll-Free FAX: (800) 326-8940

E-Mail: sales@kuriyama.com

SOUTHEAST WAREHOUSE

FORTNEY SALES CO., INC.

4221 Cantrell Road NW

Acworth, GA 30101

Phone: (770) 427-6528

FAX: (770) 423-9249

Toll Free FAX: (800) 423-9249

Web Site: www.fortneysales.com

E-Mail: sales@fortneysales.com

EASTERN WAREHOUSE

EASTERN RUBBER & PLASTICS CO., INC.

100 GOLDMAN DR.

PLUMSTED INDUSTRIAL PARK

CREAM RIDGE, NJ 08514

Phone: (609) 758-0100

FAX: (609) 758-0102

Toll Free FAX: (800) 445-7138

Web Site: www.easternrubber.com

E-Mail: sales@easternrubber.com

IN MEXICO:

KURIYAMA DE MÉXICO S DE RL DE CV

AV JOSE PALOMO MARTINEZ NO 520-20 BODEGA 5

PARQUE INDUSTRIAL OMOLAP

APODACA, N.L. CP:66633, MÉXICO

Telefonos: (81) 1086-1870 0 71

Lada sin Costo 01 800 822 52 00

FAX: (81) 1086-1869

Internet: www.kuriyama.com.mx

www.kuriyama.com

Correo Electronico: ventas@kuriyama.com