

Hose and Fittings for the Food and Beverage Industries

Bakeries

Bottling Plants

Breweries

Canneries

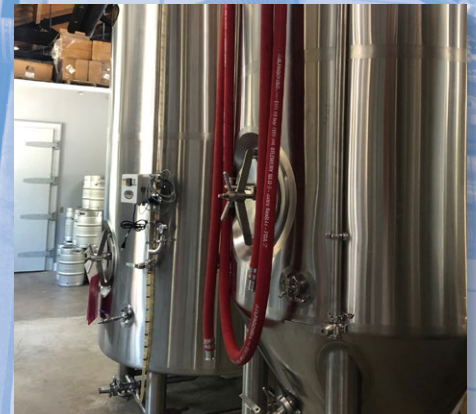
Dairies

Distilleries

Food Packaging Plants

Meat and Poultry Plants

Wineries



KURIYAMA
OF AMERICA, INC.



EDITION 1019

Hose and Fittings for the Food and Beverage Industries

Index

Facilities Wash Down Hoses

| | |
|----------------------------------|----|
| Alfagomma® T350LL/LH Series..... | 17 |
| Alfagomma® T351LL/LG Series..... | 17 |

Food Grade Bulk Material Handling Hoses

| | |
|---|----|
| Alfagomma® T720LG Series..... | 19 |
| Alfagomma® T714LG Series..... | 19 |
| Alfagomma® T760LE Series..... | 19 |
| Hose Tec® Stainless Steel, Lined Hose Assemblies..... | 20 |
| Hose Tec® Stainless Steel, Unlined Hose Assemblies..... | 20 |
| Tigerflex™ 2020™ Series..... | 18 |
| Tigerflex™ Voltbuster™ VLT-SD™ Series..... | 18 |

Food Grade Dry Material Handling Hoses

| | |
|--|----|
| Tigerflex™ 2001™ Series..... | 15 |
| Tigerflex™ Voltbuster™ VOLT™ Series..... | 15 |
| Tigerflex™ WE™ Series..... | 14 |
| Tigerflex™ WT™ Series..... | 14 |

Food Grade Ducting Hoses

| | |
|--|----|
| Flexair™ Urevent™ URE-CL™ Series..... | 16 |
| Flexair™ Urevent™ UREH-CL™ Series..... | 16 |
| Tigerflex™ GTFE™ Series..... | 16 |

Food Grade Liquid Transfer Hoses

| | |
|---|----|
| Alfagomma® T405LL/LB Series..... | 5 |
| Alfagomma® T410LL/LB Series..... | 4 |
| Alfagomma® T426LB Series..... | 5 |
| Alfagomma® T455LL Series..... | 5 |
| Alfagomma® The BREWT™ T422LH Series..... | 4 |
| Kuri Tec® Clearbraided® K3130 Series..... | 7 |
| Kuri Tec® Clearbraided® K3150 Series..... | 6 |
| Kuri Tec® Clearbraided® Oil K3550 Series..... | 8 |
| Kuri Tec® Polyspring® K7160 Series..... | 9 |
| Kuri Tec® Polyspring® Oil K7560 Series..... | 8 |
| Kuri Tec® Polywire® K7130 Series..... | 9 |
| Kuri Tec® Polywire® Plus K7300 Series..... | 10 |
| Tigerflex™ FT™ Series..... | 3 |
| Tigerflex™ MILK™ Series..... | 3 |
| Tigerflex™ WSTF™ Series..... | 3 |

Food Grade Liquid Transfer Tubing

| | |
|--|----|
| Kuri Tec® 2600 Series..... | 13 |
| Kuri Tec® K050 Series..... | 12 |
| Kuri Tec® K018 Series..... | 13 |
| Kuri Tec® Klearon™ 73 K010 Series..... | 11 |

Hose Clamps

| | |
|---|----|
| Center Punch Clamps (Carbon Steel)..... | 32 |
| Center Punch Clamps (Stainless)..... | 32 |

| | |
|---|----|
| Ducting Hose Bridge Clamps (Flexair™)..... | 30 |
| Ducting Hose Bridge Clamps (Tigerflex™)..... | 30 |
| Kuri-Clamp™ Mini Worm Gear Clamps..... | 31 |
| Kuri-Clamp™ Standard Duty Worm Gear Clamps..... | 31 |
| Spiral Double Bolt Clamps (Carbon Steel)..... | 30 |
| Spiral Double Bolt Clamps (Stainless)..... | 30 |

Industrial Couplings

| | |
|---|----|
| Part A Male Adapter x Female NPT..... | 26 |
| Part B Female Coupler x Male NPT..... | 26 |
| Part C Female Coupler x Hose Shank..... | 26 |
| Part D Female Coupler x Female NPT..... | 27 |
| Part E Male Adapter x Hose Shank..... | 27 |
| Part F Male Adapter x Male NPT..... | 27 |

KuriKrimp™ Ferrules

| | |
|--------------------|----|
| CRF-SS Series..... | 29 |
|--------------------|----|

Sanitary Ferrules

| | |
|--------------------|----|
| SCF-SS Series..... | 28 |
|--------------------|----|

Sanitary Fittings & Accessories

| | |
|--|----|
| Hex Wrenches..... | 23 |
| Sanitary Clamps..... | 22 |
| Sanitary Hex Nut..... | 23 |
| Sanitary Hose Bumpers..... | 22 |
| Sanitary Hose Risers..... | 22 |
| Sanitary I-Line Clamps..... | 23 |
| Sanitary Fitting Bevel Seat x Hose Shank..... | 23 |
| Sanitary Fitting Female I-Line x Hose Shank..... | 23 |
| Sanitary Fitting Tri-Clamp x Hose Shank..... | 21 |
| Sanitary Fitting Tri-Clamp x Long Hose Shank..... | 21 |
| Sanitary Fitting Tri-Clamp x Short Hose Shank..... | 21 |
| Sanitary Tri-Clamp End Cap..... | 22 |

Sanitary Gaskets

| | |
|--|----|
| Sanitary Buna-N Bevel Seat Gasket - Black..... | 25 |
| Sanitary Buna-N I-Line Gasket - Black..... | 25 |
| Sanitary Buna-N Tri-Clamp Gasket - Black..... | 24 |
| Sanitary Buna-N Tri-Clamp Gasket - White..... | 24 |
| Sanitary EPDM Bevel Seat Gasket - Black..... | 25 |
| Sanitary EPDM I-Line Gasket - Black..... | 25 |
| Sanitary EPDM Tri-Clamp Gasket - Black..... | 24 |
| Sanitary FKM Tri-Clamp Gasket - Black..... | 24 |

Sheet Rubber

| | |
|------------------------------|----|
| FDA Silicone Sheet..... | 34 |
| FDA White Nitrile Sheet..... | 33 |

Because we continually examine ways to improve our products, we reserve the right to alter specifications without notice.

Hose and Fittings for the Food and Beverage Industries

Food Grade Liquid Transfer Hoses

Tigerflex™ Food Grade Liquid Suction Hose

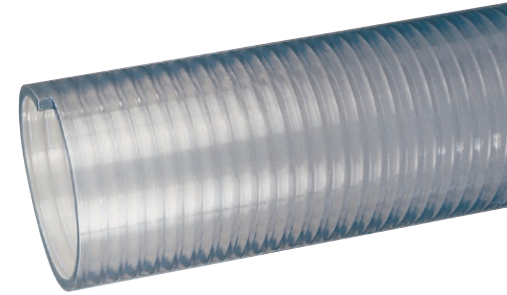
General Applications: Food grade liquids such as water, wine and juice

Construction: Food grade PVC tube with rigid PVC helix.

Service Temperature Range: -4°F (-20°C) to +150°F (+65°C)

Compliances: 3-A, FDA, Phthalate Free, RoHS, USDA

| Part Number | Hose Inner Diameter (in) | Working Pressure (psi) at 68°F | Length (ft) | Weight (lbs/ft) |
|--------------|--------------------------|--------------------------------|-------------|-----------------|
| FT075X100 | 3/4 | 115 | 100 | 0.17 |
| FT100X100 | 1 | 100 | 100 | 0.24 |
| FT125X100 | 1 1/4 | 90 | 100 | 0.44 |
| FT150X100 | 1 1/2 | 85 | 100 | 0.50 |
| FT200X100 | 2 | 85 | 100 | 0.71 |
| FT250X100 | 2 1/2 | 65 | 100 | 0.94 |
| FT300X100 | 3 | 55 | 100 | 1.14 |
| FT400X100/60 | 4 | 50 | 100/60 | 1.91 |
| FT500X50/20 | 5 | 40 | 50/20 | 2.41 |
| FT600X20 | 6 | 30 | 20 | 3.28 |
| FT800X20 | 8 | 25 | 20 | 5.67 |



Tigerflex™ Food Grade Liquid Suction & Discharge Hose

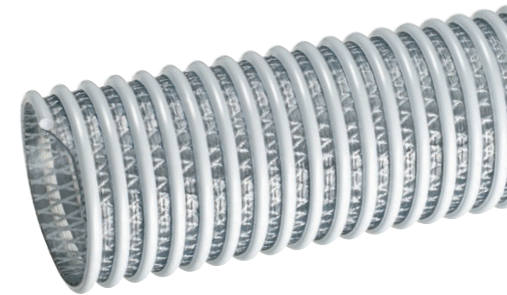
General Applications: Food grade liquids such as water, wine and juice

Construction: Food grade PVC tube, rigid PVC helix and fabric reinforcement.

Service Temperature Range: -4°F (-20°C) to +150°F (+65°C)

Compliances: 3-A, FDA, Phthalate Free, RoHS, USDA

| Part Number | Hose Inner Diameter (in) | Working Pressure (psi) at 68°F | Length (ft) | Weight (lbs/ft) |
|----------------|--------------------------|--------------------------------|-------------|-----------------|
| WSTF150X100 | 1 1/2 | 110 | 100 | 0.42 |
| WSTF200X100 | 2 | 100 | 100 | 0.74 |
| WSTF300X100/20 | 3 | 100 | 100/20 | 1.13 |
| WSTF400X100/20 | 4 | 75 | 100/20 | 1.74 |
| WSTF600X100/20 | 6 | 70 | 100/20 | 3.88 |



Tigerflex™ Food Grade Liquid Suction Hose

General Applications: Milk and dairy product transfer

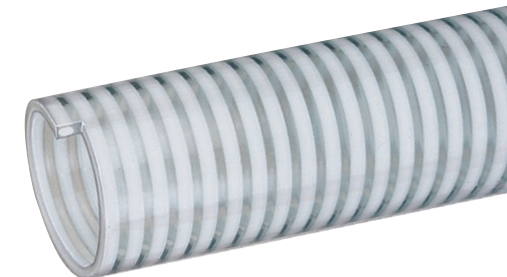
Construction: Food grade PVC tube with rigid PVC helix.

Service Temperature Range (MILK Series): -4°F (-20°C) to +150°F (+65°C)

Service Temperature Range (MILK-LT Series): -40°F (-40°C) to +150°F (+65°C)

Compliances: 3-A, FDA, Phthalate Free, RoHS, USDA

| Part Number | Hose Inner Diameter (in) | Working Pressure (psi) at 68°F | Length (ft) | Weight (lbs/ft) |
|----------------|--------------------------|--------------------------------|-------------|-----------------|
| MILK150X100 | 1 1/2 | 75 | 100 | 0.45 |
| MILK200X100 | 2 | 75 | 100 | 0.63 |
| MILK250X100 | 2 1/2 | 55 | 100 | 0.81 |
| MILK300X100 | 3 | 55 | 100 | 1.18 |
| MILK-LT150X100 | 1 1/2 | 75 | 100 | 0.45 |
| MILK-LT200X100 | 2 | 75 | 100 | 0.65 |
| MILK-LT250X100 | 2 1/2 | 55 | 100 | 0.84 |
| MILK-LT300X100 | 3 | 55 | 100 | 1.20 |



Because we continually examine ways to improve our products, we reserve the right to alter specifications without notice.

Hose and Fittings for the Food and Beverage Industries

Food Grade Liquid Transfer Hoses (Alcohols)

Alfagomma® THE BREWT™ Suction & Discharge Brewery Hose

General Applications: Specially designed for wine, beer and spirits up to 190 proof or 95% alcohol content.

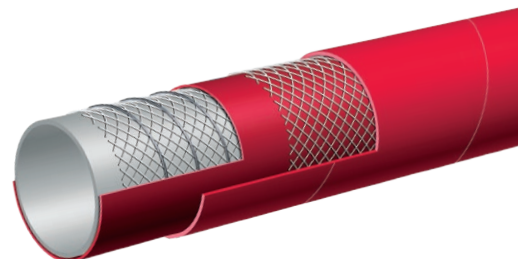
Construction: White, food grade Chlorobutyl tube, high tensile textile cords, steel helix wire and NR/EPDM cover.

Service Temperature Range: -22°F (-30°C) to +226°F (+108°C)

Compliances: 3-A, FDA, Phthalate Free



| Part Number | Nominal ID | | Nominal OD | | Working Pressure (psi) at 70°F | Length (ft) | Weight (lbs/ft) |
|---------------|------------|------|------------|------|--------------------------------|-------------|-----------------|
| | (in) | (mm) | (in) | (mm) | | | |
| T422LH100X100 | 1 | 25 | 1.54 | 39 | 150 | 100 | 0.66 |
| T422LH125X100 | 1 1/4 | 32 | 1.81 | 46 | 150 | 100 | 0.81 |
| T422LH150X100 | 1 1/2 | 38 | 2.05 | 52 | 150 | 100 | 0.93 |
| T422LH200X100 | 2 | 51 | 2.56 | 65 | 150 | 100 | 1.21 |
| T422LH250X100 | 2 1/2 | 63 | 3.11 | 79 | 150 | 100 | 1.81 |
| T422LH300X100 | 3 | 76 | 3.62 | 92 | 150 | 100 | 2.30 |
| T422LH400X100 | 4 | 102 | 4.64 | 118 | 150 | 100 | 3.01 |



Alfagomma® Crush Resistant Food & Beverage Suction & Discharge Hose

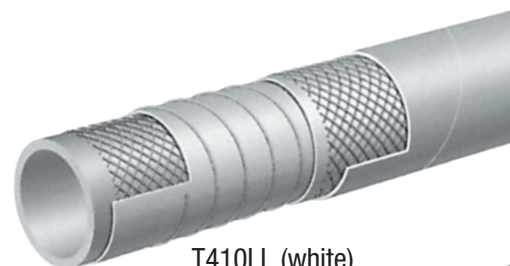
General Applications: Both T410LL and T410LB hoses are specially designed for wine, beer and spirits up to 190 proof or 95% alcohol content.

Construction: White, food grade Chlorobutyl tube, high tensile textile cords, PET helix and EPDM cover.

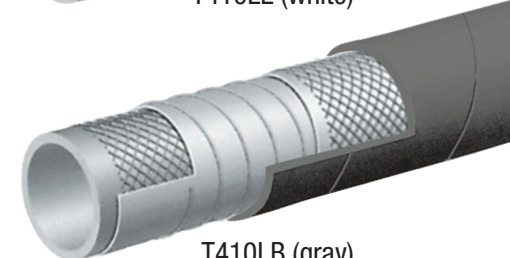
Service Temperature Range: -22°F (-30°C) to +226°F (+108°C)

Compliances: 3-A, FDA, Phthalate Free

| Part Number | Nominal ID | | Nominal OD | | Working Pressure (psi) at 70°F | Length (ft) | Weight (lbs/ft) |
|---------------|------------|------|------------|------|--------------------------------|-------------|-----------------|
| | (in) | (mm) | (in) | (mm) | | | |
| T410LL100X100 | 1 | 25 | 1.46 | 37 | 240 | 100 | 0.60 |
| T410LB100X100 | 1 | 25 | 1.46 | 37 | 240 | 100 | 0.60 |
| T410LL150X100 | 1 1/2 | 38 | 2.05 | 52 | 240 | 100 | 1.00 |
| T410LL200X100 | 2 | 51 | 2.56 | 65 | 240 | 100 | 1.29 |
| T410LB200X100 | 2 | 51 | 2.56 | 65 | 240 | 100 | 1.29 |
| T410LL300X100 | 3 | 76 | 3.62 | 92 | 240 | 100 | 2.23 |
| T410LB300X100 | 3 | 76 | 3.62 | 92 | 240 | 100 | 2.23 |



T410LL (white)



T410LB (gray)

Because we continually examine ways to improve our products, we reserve the right to alter specifications without notice.

Hose and Fittings for the Food and Beverage Industries

Food Grade Liquid Transfer Hoses (Oily Liquids)

Alfagomma® Liquid Food Suction & Discharge Hose

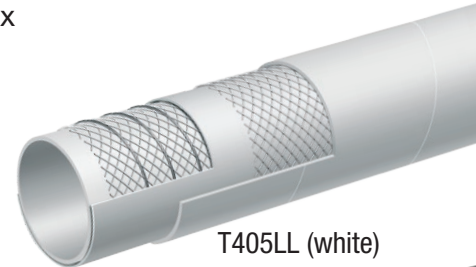
General Applications: Transfer of oily food and beverage

Construction: White, food grade NBR tube, high tensile textile cords, steel helix wire and NBR/PVC cover.

Service Temperature Range: -22°F (-30°C) to +212°F (+100°C)

Compliances: 3-A, FDA, Phthalate Free

| Part Number | Nominal ID | | Nominal OD | | Working Pressure (psi) at 70°F | Length (ft) | Weight (lbs/ft) |
|---------------|------------|------|------------|------|--------------------------------|-------------|-----------------|
| | (in) | (mm) | (in) | (mm) | | | |
| T405LL100X100 | 1 | 25 | 1.46 | 37 | 150 | 100 | 0.61 |
| T405LL150X100 | 1 1/2 | 38 | 1.97 | 50 | 150 | 100 | 0.84 |
| T405LB150X100 | 1 1/2 | 38 | 1.97 | 50 | 150 | 100 | 0.84 |
| T405LL200X100 | 2 | 51 | 2.48 | 63 | 150 | 100 | 1.08 |
| T405LB200X100 | 2 | 51 | 2.48 | 63 | 150 | 100 | 1.08 |
| T405LL300X100 | 3 | 76 | 3.46 | 88 | 150 | 100 | 1.71 |
| T405LB300X100 | 3 | 76 | 3.46 | 88 | 150 | 100 | 1.71 |
| T405LL400X100 | 4 | 102 | 4.57 | 116 | 150 | 100 | 2.36 |
| T405LB400X100 | 4 | 102 | 4.57 | 116 | 150 | 100 | 2.36 |



T405LL (white)



T405LB (gray)

Alfagomma® Corrugated, Liquid Food Suction & Discharge Hose

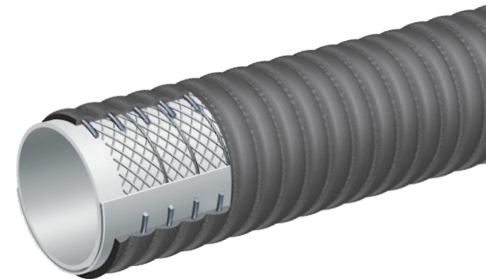
General Applications: Transfer of oily food and beverage

Construction: White, food grade NBR tube, high tensile textile cords, steel helix wire and NBR/PVC cover.

Service Temperature Range: -22°F (-30°C) to +176°F (+80°C)

Compliances: 3-A, FDA, Phthalate Free

| Part Number | Nominal ID | | Nominal OD | | Working Pressure (psi) at 70°F | Length (ft) | Weight (lbs/ft) |
|---------------|------------|------|------------|------|--------------------------------|-------------|-----------------|
| | (in) | (mm) | (in) | (mm) | | | |
| T426LB300X100 | 3 | 76 | 3.62 | 92 | 150 | 100 | 1.84 |
| T426LB400X100 | 4 | 102 | 4.65 | 118 | 150 | 100 | 2.69 |



Alfagomma® Liquid Food Discharge Hose

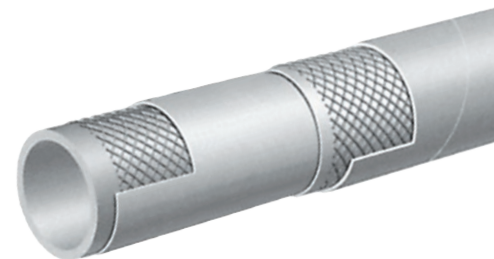
General Applications: Transfer of oily food and beverage

Construction: White, food grade NBR tube, high tensile textile cords and NBR/PVC blend cover.

Service Temperature Range: -22°F (-30°C) to +176°F (+80°C)

Compliances: 3-A, FDA, Phthalate Free

| Part Number | Nominal ID | | Nominal OD | | Working Pressure (psi) at 70°F | Length (ft) | Weight (lbs/ft) |
|---------------|------------|------|------------|------|--------------------------------|-------------|-----------------|
| | (in) | (mm) | (in) | (mm) | | | |
| T455LL150X100 | 1 1/2 | 38 | 1.89 | 48 | 150 | 100 | 0.60 |
| T455LL200X100 | 2 | 51 | 2.48 | 63 | 150 | 100 | 0.95 |
| T455LL300X100 | 3 | 76 | 3.46 | 88 | 150 | 100 | 1.38 |



Because we continually examine ways to improve our products, we reserve the right to alter specifications without notice.

Hose and Fittings for the Food and Beverage Industries

Food Grade Liquid Transfer Hoses

Kuri Tec® Clearbraided® Yarn Reinforced Food & Beverage Hose

General Applications: Transfer of potable water, liquid foods and beverages

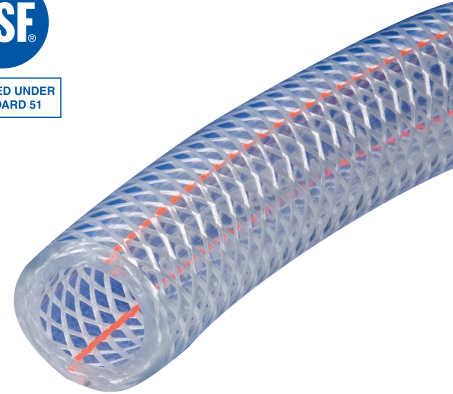
Construction: Food grade PVC with yarn reinforcement.

Service Temperature Range: +25°F (-4°C) to +150°F (+65°C)

Compliances: 3A, FDA, NSF, Phthalate Free, RoHS, USDA, USP Class VI



CERTIFIED UNDER STANDARD 51



| Part Number | Nominal ID | | Nominal OD | | Working Pressure (psi) at 70°F | Length (ft) | Weight (lbs/ft) |
|----------------|------------|------|------------|------|--------------------------------|-------------|-----------------|
| | (in) | (mm) | (in) | (mm) | | | |
| K3150-03X100 | 3/16 | 4.8 | 0.375 | 9.5 | 250 | 100 | 0.04 |
| K3150-03X300 | 3/16 | 4.8 | 0.375 | 9.5 | 250 | 300 | 0.04 |
| K3150-04X100 | 1/4 | 6.5 | 0.438 | 11.1 | 250 | 100 | 0.06 |
| K3150-04X300 | 1/4 | 6.5 | 0.438 | 11.1 | 250 | 300 | 0.06 |
| K3150-05X100 | 5/16 | 7.9 | 0.531 | 13.5 | 250 | 100 | 0.08 |
| K3150-05X300 | 5/16 | 7.9 | 0.531 | 13.5 | 250 | 300 | 0.08 |
| K3150-06X100 | 3/8 | 9.5 | 0.594 | 15.1 | 225 | 100 | 0.09 |
| K3150-06X300 | 3/8 | 9.5 | 0.594 | 15.1 | 225 | 300 | 0.09 |
| K3150-08X100 | 1/2 | 12.7 | 0.750 | 19.1 | 200 | 100 | 0.13 |
| K3150-08X300 | 1/2 | 12.7 | 0.750 | 19.1 | 200 | 300 | 0.13 |
| K3150-10X100 | 5/8 | 15.9 | 0.891 | 22.6 | 200 | 100 | 0.18 |
| K3150-10X200 | 5/8 | 15.9 | 0.891 | 22.6 | 200 | 200 | 0.18 |
| K3150-12X100 | 3/4 | 19.1 | 1.031 | 26.2 | 150 | 100 | 0.22 |
| K3150-12X200 | 3/4 | 19.1 | 1.031 | 26.2 | 150 | 200 | 0.22 |
| K3150-16X100 | 1 | 25.4 | 1.300 | 33.0 | 125 | 100 | 0.30 |
| K3150-16X200 | 1 | 25.4 | 1.300 | 33.0 | 125 | 200 | 0.30 |
| K3150-20X50 | 1 1/4 | 31.8 | 1.620 | 41.1 | 100 | 50 | 0.45 |
| K3150-20X100 | 1 1/4 | 31.8 | 1.620 | 41.1 | 100 | 100 | 0.45 |
| K3150-24X50 | 1 1/2 | 38.1 | 1.938 | 49.2 | 100 | 50 | 0.64 |
| K3150-24X100 | 1 1/2 | 38.1 | 1.938 | 49.2 | 100 | 100 | 0.64 |
| K3150-32X50 | 2 | 50.8 | 2.490 | 63.2 | 75 | 50 | 0.94 |
| K3150X32X100 | 2 | 50.8 | 2.490 | 63.2 | 75 | 100 | 0.94 |
| K3150-MM04X100 | 0.157 | 4 | 0.354 | 9.0 | 250 | 100 | 0.04 |
| K3150-MM06X100 | 0.236 | 6 | 0.433 | 11.0 | 250 | 100 | 0.06 |
| K3150-MM08X100 | 0.315 | 8 | 0.531 | 13.5 | 250 | 100 | 0.08 |
| K3150-MM10X100 | 0.394 | 10 | 0.630 | 16.0 | 225 | 100 | 0.10 |
| K3150-MM12X100 | 0.472 | 12 | 0.709 | 19.0 | 200 | 100 | 0.12 |
| K3150-MM19X100 | 0.748 | 19 | 1.024 | 26.0 | 150 | 100 | 0.21 |



Because we continually examine ways to improve our products, we reserve the right to alter specifications without notice.

Hose and Fittings for the Food and Beverage Industries

Food Grade Liquid Transfer Hoses

Kuri Tec® Clearbraid® Heavy Duty Yarn Reinforced PVC Food & Beverage Hose

General Applications: Transfer of potable water, liquid foods and beverages

Construction: Food grade PVC with yarn reinforcement.

Service Temperature Range: +25°F (-4°C) to +150°F (+65°C)

Compliances: 3-A, FDA, NSF, Phthalate Free, RoHS, UL, USDA, USP Class VI



CERTIFIED UNDER STANDARD 51



| Part Number | Nominal ID | | Nominal OD | | Working Pressure (psi) at 70°F | Length (ft) | Weight (lbs/ft) |
|--------------|------------|------|------------|------|--------------------------------|-------------|-----------------|
| | (in) | (mm) | (in) | (mm) | | | |
| K3130-02X100 | 1/8 | 3.2 | 0.328 | 8.3 | 350 | 100 | 0.04 |
| K3130-02X300 | 1/8 | 3.2 | 0.328 | 8.3 | 350 | 300 | 0.04 |
| K3130-03X100 | 3/16 | 4.8 | 0.406 | 10.3 | 350 | 100 | 0.06 |
| K3130-03X300 | 3/16 | 4.8 | 0.406 | 10.3 | 350 | 300 | 0.06 |
| K3130-04X100 | 1/4 | 6.5 | 0.500 | 12.7 | 350 | 100 | 0.08 |
| K3130-04X300 | 1/4 | 6.5 | 0.500 | 12.7 | 350 | 300 | 0.08 |
| K3130-05X100 | 5/16 | 7.9 | 0.563 | 14.3 | 275 | 100 | 0.09 |
| K3130-05X300 | 5/16 | 7.9 | 0.563 | 14.3 | 275 | 300 | 0.09 |
| K3130-06X100 | 3/8 | 9.5 | 0.625 | 15.9 | 275 | 100 | 0.11 |
| K3130-06X300 | 3/8 | 9.5 | 0.625 | 15.9 | 275 | 300 | 0.11 |
| K3130-08X100 | 1/2 | 12.7 | 0.813 | 20.7 | 250 | 100 | 0.17 |
| K3130-08X300 | 1/2 | 12.7 | 0.813 | 20.7 | 250 | 300 | 0.17 |
| K3130-10X100 | 5/8 | 15.9 | 1.000 | 25.4 | 225 | 100 | 0.26 |
| K3130-10X200 | 5/8 | 15.9 | 1.000 | 25.4 | 225 | 200 | 0.26 |
| K3130-12X100 | 3/4 | 19.1 | 1.125 | 28.6 | 200 | 100 | 0.30 |
| K3130-12X200 | 3/4 | 19.1 | 1.125 | 28.6 | 200 | 200 | 0.30 |
| K3130-16X100 | 1 | 25.4 | 1.375 | 34.9 | 150 | 100 | 0.38 |
| K3130-16X200 | 1 | 25.4 | 1.375 | 34.9 | 150 | 200 | 0.38 |
| K3130-20X50 | 1 1/4 | 31.8 | 1.750 | 44.5 | 125 | 50 | 0.64 |
| K3130-20X100 | 1 1/4 | 31.8 | 1.750 | 44.5 | 125 | 100 | 0.64 |
| K3130-24X50 | 1 1/2 | 38.1 | 2.000 | 50.8 | 100 | 50 | 0.75 |
| K3130-24X100 | 1 1/2 | 38.1 | 2.000 | 50.8 | 100 | 100 | 0.75 |
| K3130-32X50 | 2 | 50.8 | 2.500 | 63.5 | 75 | 50 | 0.96 |
| K3130-32X100 | 2 | 50.8 | 2.500 | 63.5 | 75 | 100 | 0.96 |



Because we continually examine ways to improve our products, we reserve the right to alter specifications without notice.

Hose and Fittings for the Food and Beverage Industries

Food Grade Liquid Transfer Hoses

Kuri Tec® Clearbraid® Oil Yarn Reinforced Food & Beverage Hose

General Applications: Transfer of oily food products such as olive, sunflower, soybean and peanut oils

Construction: Oil resistant food grade PVC with yarn reinforcement.

Service Temperature Range: +25°F (-4°C) to +150°F (+65°C)

Compliances: FDA, NSF, Phthalate Free, RoHS

CLEARBRAID® OIL 



| Part Number | Nominal ID | | Nominal OD | | Working Pressure (psi) at 70°F | Length (ft) | Weight (lbs/ft) |
|--------------|------------|------|------------|------|--------------------------------|-------------|-----------------|
| | (in) | (mm) | (in) | (mm) | | | |
| K3550-04X100 | 1/4 | 6.5 | 0.438 | 11.1 | 250 | 100 | 0.06 |
| K3550-06X100 | 3/8 | 9.5 | 0.594 | 15.1 | 225 | 100 | 0.09 |
| K3550-08X100 | 1/2 | 12.7 | 0.750 | 19.1 | 200 | 100 | 0.13 |
| K3550-12X100 | 3/4 | 19.1 | 1.031 | 26.2 | 150 | 100 | 0.22 |
| K3550-16X100 | 1 | 25.4 | 1.300 | 33.0 | 125 | 100 | 0.30 |
| K3550-20X100 | 1 1/4 | 31.8 | 1.620 | 41.1 | 100 | 100 | 0.46 |
| K3550-24X100 | 1 1/2 | 38.1 | 1.938 | 49.2 | 100 | 100 | 0.64 |
| K3550-32X100 | 2 | 50.8 | 2.490 | 63.2 | 75 | 100 | 0.94 |



Kuri Tec® Polyspring® Oil Wire Reinforced Food & Beverage Vacuum, Suction & Transfer Hose

General Applications: Transfer of oily food products such as olive, sunflower, soybean and peanut oils (vacuum rated at 29.9 Hg (in))

Construction: Oil resistant food grade PVC with steel wire helix.

Service Temperature Range: +25°F (-4°C) to +150°F (+65°C)

Compliances: FDA, NSF, Phthalate Free, RoHS

POLYSPRING® OIL 



| Part Number | Nominal ID | | Nominal OD | | Working Pressure (psi) at 70°F | Length (ft) | Weight (lbs/ft) |
|--------------|------------|------|------------|------|--------------------------------|-------------|-----------------|
| | (in) | (mm) | (in) | (mm) | | | |
| K7560-08X100 | 1/2 | 12.7 | 0.750 | 19.1 | 100 | 100 | 0.08 |
| K7560-12X100 | 3/4 | 19.1 | 1.031 | 26.2 | 70 | 100 | 0.12 |
| K7560-16X100 | 1 | 25.4 | 1.297 | 32.9 | 70 | 100 | 0.16 |
| K7560-20X100 | 1 1/4 | 31.8 | 1.609 | 40.9 | 70 | 100 | 0.27 |
| K7560-24X100 | 1 1/2 | 38.1 | 1.860 | 47.2 | 50 | 100 | 0.31 |
| K7560-32X100 | 2 | 50.8 | 2.391 | 60.7 | 50 | 100 | 0.44 |
| K7560-24X50 | 2 1/2 | 63.5 | 3.000 | 76.2 | 50 | 50 | 0.72 |
| K7560-32X50 | 3 | 76.2 | 3.500 | 88.9 | 50 | 50 | 0.84 |



*Clearbraid® Oil and Polyspring® Oil exhibit up to 3 times better oil resistance than standard PVC hoses. Meets ARPM (Association for Rubber Products Manufacturers) Class A (High Oil Resistance)

Because we continually examine ways to improve our products, we reserve the right to alter specifications without notice.

Hose and Fittings for the Food and Beverage Industries

Food Grade Liquid Transfer Hoses

Kuri Tec® Polyspring® Wire Reinforced Food & Beverage Vacuum, Suction & Transfer Hose

General Applications: Transfer of potable water, liquid foods and beverages (vacuum rated at 29.9 Hg (in))

Construction: Food grade PVC with steel wire helix.

Service Temperature Range: +25°F (-4°C) to +150°F (+65°C)

Compliances: 3A, FDA, NSF, Phthalate Free, RoHS, USDA, USP Class VI



CERTIFIED UNDER STANDARD 51

| Part Number | Nominal ID | | Nominal OD | | Working Pressure (psi) at 70°F | Length (ft) | Weight (lbs/ft) |
|--------------|------------|------|------------|------|--------------------------------|-------------|-----------------|
| | (in) | (mm) | (in) | (mm) | | | |
| K7160-04X50 | 1/4 | 6.4 | 0.460 | 11.7 | 150 | 50 | 0.07 |
| K7160-04X100 | 1/4 | 6.4 | 0.460 | 11.7 | 150 | 100 | 0.07 |
| K7160-06X50 | 3/8 | 9.5 | 0.600 | 15.2 | 100 | 50 | 0.11 |
| K7160-06X100 | 3/8 | 9.5 | 0.600 | 15.2 | 100 | 100 | 0.11 |
| K7160-08X50 | 1/2 | 12.7 | 0.750 | 19.1 | 100 | 50 | 0.15 |
| K7160-08X100 | 1/2 | 12.7 | 0.750 | 19.1 | 100 | 100 | 0.15 |
| K7160-10X50 | 5/8 | 15.9 | 0.891 | 22.6 | 100 | 50 | 0.19 |
| K7160-10X100 | 5/8 | 15.9 | 0.891 | 22.6 | 100 | 100 | 0.19 |
| K7160-12X50 | 3/4 | 19.1 | 1.031 | 26.2 | 70 | 50 | 0.24 |
| K7160-12X100 | 3/4 | 19.1 | 1.031 | 26.2 | 70 | 100 | 0.24 |
| K7160-16X50 | 1 | 25.4 | 1.297 | 32.9 | 70 | 50 | 0.33 |
| K7160-16X100 | 1 | 25.4 | 1.297 | 32.9 | 70 | 100 | 0.33 |
| K7160-20X50 | 1 1/4 | 31.8 | 1.609 | 40.9 | 70 | 50 | 0.50 |
| K7160-24X50 | 1 1/2 | 38.1 | 1.860 | 47.2 | 50 | 50 | 0.58 |
| K7160-32X50 | 2 | 50.8 | 2.391 | 60.7 | 50 | 50 | 0.84 |
| K7160-36X50 | 2 1/4 | 57.2 | 2.750 | 69.9 | 50 | 50 | 1.16 |
| K7160-40X50 | 2 1/2 | 63.5 | 3.000 | 76.2 | 50 | 50 | 1.38 |
| K7160-48X25 | 3 | 76.2 | 3.500 | 88.9 | 50 | 25 | 1.62 |
| K7160-48X50 | 3 | 76.2 | 3.500 | 88.9 | 50 | 50 | 1.62 |



Kuri Tec® Polywire® Heavy Duty, Wire Reinforced Food & Beverage Vacuum, Suction & Transfer Hose

General Applications: Transfer of potable water, liquid foods and beverages (vacuum rated at 29.9 Hg (in))

Construction: Food grade PVC with steel wire helix.

Service Temperature Range: +25°F (-4°C) to +150°F (+65°C)

Compliances: 3-A, FDA, NSF, Phthalate Free, RoHS, UL, USDA, USP Class VI



CERTIFIED UNDER STANDARD 51

| Part Number | Nominal ID | | Nominal OD | | Working Pressure (psi) at 70°F | Length (ft) | Weight (lbs/ft) |
|--------------|------------|------|------------|------|--------------------------------|-------------|-----------------|
| | (in) | (mm) | (in) | (mm) | | | |
| K7130-04X100 | 1/4 | 6.4 | 0.500 | 12.7 | 250 | 100 | 0.10 |
| K7130-06X100 | 3/8 | 9.5 | 0.625 | 15.9 | 150 | 100 | 0.13 |
| K7130-08X100 | 1/2 | 12.7 | 0.813 | 20.7 | 150 | 100 | 0.21 |
| K7130-10X100 | 5/8 | 15.9 | 1.000 | 25.4 | 150 | 100 | 0.30 |
| K7130-12X100 | 3/4 | 19.1 | 1.125 | 28.6 | 150 | 100 | 0.36 |
| K7130-16X100 | 1 | 25.4 | 1.375 | 34.9 | 100 | 100 | 0.44 |
| K7130-20X50 | 1 1/4 | 31.8 | 1.750 | 44.5 | 100 | 50 | 0.74 |
| K7130-24X50 | 1 1/2 | 38.1 | 2.000 | 50.8 | 100 | 50 | 0.84 |
| K7130-32X50 | 2 | 50.8 | 2.500 | 63.5 | 100 | 50 | 1.12 |



Because we continually examine ways to improve our products, we reserve the right to alter specifications without notice.

Hose and Fittings for the Food and Beverage Industries

Food Grade Liquid Transfer Hoses

Kuri Tec® Polywire® Plus Food & Beverage Vacuum, Suction, Pressure & Transfer Hose

General Applications: Transfer of potable water, liquid foods and beverages (vacuum rated at 29.9 Hg (in))

Construction: Food grade PVC with steel wire helix & yarn reinforcement.

Service Temperature Range: +15°F (-9°C) to +150°F (+65°C)

Compliances: 3A, FDA, NSF, Phthalate Free, RoHS, USDA



CERTIFIED UNDER STANDARD 51

| Part Number | Nominal ID | | Nominal OD | | Working Pressure (psi) at 70°F | Length (ft) | Weight (lbs/ft) |
|--------------|------------|------|------------|------|--------------------------------|-------------|-----------------|
| | (in) | (mm) | (in) | (mm) | | | |
| K7300-08X25 | 1/2 | 12.7 | 0.906 | 23.0 | 250 | 25 | 0.26 |
| K7300-08X50 | 1/2 | 12.7 | 0.906 | 23.0 | 250 | 50 | 0.26 |
| K7300-08X100 | 1/2 | 12.7 | 0.906 | 23.0 | 250 | 100 | 0.26 |
| K7300-12X25 | 3/4 | 19.1 | 1.196 | 30.4 | 225 | 25 | 0.40 |
| K7300-12X50 | 3/4 | 19.1 | 1.196 | 30.4 | 225 | 50 | 0.40 |
| K7300-12X100 | 3/4 | 19.1 | 1.196 | 30.4 | 225 | 100 | 0.40 |
| K7300-16X25 | 1 | 25.4 | 1.464 | 37.2 | 225 | 25 | 0.53 |
| K7300-16X50 | 1 | 25.4 | 1.464 | 37.2 | 225 | 50 | 0.53 |
| K7300-16X100 | 1 | 25.4 | 1.464 | 37.2 | 225 | 100 | 0.53 |
| K7300-20X25 | 1 1/4 | 31.8 | 1.780 | 45.2 | 175 | 25 | 0.74 |
| K7300-20X50 | 1 1/4 | 31.8 | 1.780 | 45.2 | 175 | 50 | 0.74 |
| K7300-24X25 | 1 1/2 | 38.1 | 2.030 | 51.6 | 175 | 25 | 0.86 |
| K7300-24X50 | 1 1/2 | 38.1 | 2.030 | 51.6 | 175 | 50 | 0.86 |
| K7300-32X25 | 2 | 50.8 | 2.600 | 66.0 | 150 | 25 | 1.28 |
| K7300-32X50 | 2 | 50.8 | 2.600 | 66.0 | 150 | 50 | 1.28 |



Because we continually examine ways to improve our products, we reserve the right to alter specifications without notice.

Hose and Fittings for the Food and Beverage Industries

Food Grade Liquid Transfer Tubing

Kuri Tec® Klearon™ 73 Clear Food Grade PVC Tubing

General Applications: Transfer of potable water, liquid foods and beverages

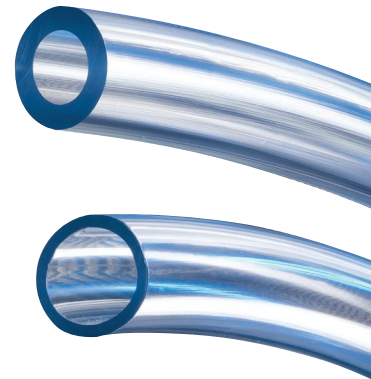
Construction: 73 Shore “A” durometer, food grade PVC tube.

Service Temperature Range: +25°F (-4°C) to +150°F (+65°C)

Compliances: 3-A, FDA, Phthalate Free, NSF, RoHS, UL, USDA, USP



CERTIFIED UNDER STANDARD 51



Available in different wall thicknesses for different pressure requirements.

| Part Number | Nominal ID | | Nominal OD | | Nominal Wall | | Working Pressure (psi) at 70°F (20°C) | Standard Length Ctn/Coils (ft) | Weight (lbs/ft) |
|---------------|------------|------|------------|------|--------------|------|---------------------------------------|--------------------------------|-----------------|
| | (in) | (mm) | (in) | (mm) | (in) | (mm) | | | |
| K010-0204X100 | 1/8 | 3.2 | 1/4 | 6.4 | 1/16 | 1.6 | 65 | 100 | 0.020 |
| K010-0304X100 | 3/16 | 4.8 | 1/4 | 6.4 | 1/32 | 0.8 | 50 | 100 | 0.012 |
| K010-0305X100 | 3/16 | 4.8 | 5/16 | 7.9 | 1/16 | 1.6 | 55 | 100 | 0.027 |
| K010-0306X100 | 3/16 | 4.8 | 3/8 | 9.5 | 3/32 | 2.4 | 60 | 100 | 0.045 |
| K010-0406X100 | 1/4 | 6.4 | 3/8 | 9.5 | 1/16 | 1.6 | 55 | 100 | 0.034 |
| K010-0407X100 | 1/4 | 6.4 | 7/16 | 11.1 | 3/32 | 2.4 | 58 | 100 | 0.055 |
| K010-0408X100 | 1/4 | 6.4 | 1/2 | 12.7 | 1/8 | 3.2 | 60 | 100 | 0.080 |
| K010-0507X100 | 5/16 | 7.9 | 7/16 | 11.1 | 1/16 | 1.6 | 50 | 100 | 0.040 |
| K010-0508X100 | 5/16 | 7.9 | 1/2 | 12.7 | 3/32 | 2.4 | 55 | 100 | 0.065 |
| K010-0509X100 | 5/16 | 7.9 | 9/16 | 14.3 | 1/8 | 3.2 | 60 | 100 | 0.094 |
| K010-0608X100 | 3/8 | 9.5 | 1/2 | 12.7 | 1/16 | 1.6 | 45 | 100 | 0.047 |
| K010-0609X100 | 3/8 | 9.5 | 9/16 | 14.3 | 3/32 | 2.4 | 50. | 100 | 0.075 |
| K010-0610X100 | 3/8 | 9.5 | 5/8 | 15.9 | 1/8 | 3.2 | 55 | 100 | 0.107 |
| K010-0709X100 | 7/16 | 11.1 | 9/16 | 14.3 | 1/16 | 1.6 | 35 | 100 | 0.060 |
| K010-0810X100 | 1/2 | 12.7 | 5/8 | 15.9 | 1/16 | 1.6 | 30 | 100 | 0.060 |
| K010-0811X100 | 1/2 | 12.7 | 11/16 | 17.5 | 3/32 | 2.4 | 40 | 100 | 0.095 |
| K010-0812X100 | 1/2 | 12.7 | 3/4 | 19.1 | 1/8 | 3.2 | 45 | 100 | 0.134 |
| K010-1012X100 | 5/8 | 15.9 | 3/4 | 19.1 | 1/16 | 1.6 | 25 | 100 | 0.082 |
| K010-1013X100 | 5/8 | 15.9 | 13/16 | 20.6 | 3/32 | 2.4 | 35 | 100 | 0.116 |
| K010-1014X100 | 5/8 | 15.9 | 7/8 | 22.2 | 1/8 | 3.2 | 40 | 100 | 0.161 |
| K010-1216X100 | 3/4 | 19.1 | 1 | 25.4 | 1/8 | 3.2 | 35 | 100 | 0.188 |
| K010-1218X100 | 3/4 | 19.1 | 1 1/8 | 28.6 | 3/16 | 4.8 | 40 | 100 | 0.300 |
| K010-1220X100 | 3/4 | 19.1 | 1 1/4 | 31.8 | 1/4 | 6.4 | 45 | 100 | 0.429 |
| K010-1418X100 | 7/8 | 22.2 | 1 1/8 | 28.6 | 1/8 | 3.2 | 30 | 100 | 0.214 |
| K010-1420X100 | 7/8 | 22.2 | 1 1/4 | 31.8 | 3/16 | 4.8 | 35 | 100 | 0.341 |
| K010-1620X100 | 1 | 25.4 | 1 1/4 | 31.8 | 1/8 | 3.2 | 25 | 100 | 0.241 |
| K010-1622X100 | 1 | 25.4 | 1 3/8 | 34.9 | 3/16 | 4.8 | 30 | 100 | 0.382 |
| K010-1624X100 | 1 | 25.4 | 1 1/2 | 38.1 | 1/4 | 6.4 | 35 | 100 | 0.536 |
| K010-2024X100 | 1 1/4 | 31.8 | 1 1/2 | 38.1 | 1/8 | 3.2 | 20 | 50 | 0.148 |
| K010-2026X100 | 1 1/4 | 31.8 | 1 5/8 | 41.3 | 3/16 | 4.8 | 30 | 50 | 0.231 |
| K010-2028X100 | 1 1/4 | 31.8 | 1 3/4 | 44.5 | 1/4 | 6.4 | 40 | 50 | 0.322 |
| K010-2430X100 | 1 1/2 | 38.1 | 1 7/8 | 47.6 | 3/16 | 4.8 | 30 | 50 | 0.271 |
| K010-2432X100 | 1 1/2 | 38.1 | 2 | 50.8 | 1/4 | 6.4 | 35 | 50 | 0.375 |
| K010-3240X50 | 2 | 50.8 | 2 1/2 | 63.5 | 1/4 | 6.4 | 35 | 50 | 0.482 |

Because we continually examine ways to improve our products, we reserve the right to alter specifications without notice.

Hose and Fittings for the Food and Beverage Industries

Food Grade Liquid Transfer Tubing

Kuri Tec® Clear PVC Tubing

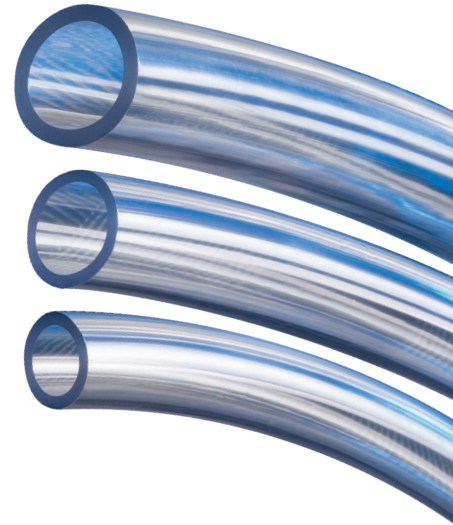
General Applications: Transfer of potable water, liquid foods and beverages

Construction: 75 Shore "A" durometer, food grade PVC.

Service Temperature Range: +25°F (-4°C) to +150°F (+65°C)

Compliances: FDA, Phthalate Free, RoHS

| Part Number | Nominal ID | | Nominal OD | | Working Pressure (psi) at 68°F | Length (ft) | Weight (lbs/ft) |
|---------------|------------|------|------------|------|--------------------------------|-------------|-----------------|
| | (in) | (mm) | (in) | (mm) | | | |
| K050-0204X100 | 1/8 | 3.2 | 1/4 | 6.4 | 65 | 100 | 0.020 |
| K050-0305X100 | 3/16 | 4.8 | 5/16 | 7.9 | 55 | 100 | 0.027 |
| K050-0406X100 | 1/4 | 6.4 | 3/8 | 9.5 | 55 | 100 | 0.034 |
| K050-0408X100 | 1/4 | 6.4 | 1/2 | 12.7 | 60 | 100 | 0.080 |
| K050-0507X100 | 5/16 | 7.9 | 7/16 | 11.1 | 50 | 100 | 0.040 |
| K050-0608X100 | 3/8 | 9.5 | 1/2 | 12.7 | 45 | 100 | 0.047 |
| K050-0609X100 | 3/8 | 9.5 | 9/16 | 14.3 | 50 | 100 | 0.075 |
| K050-0610X100 | 3/8 | 9.5 | 5/8 | 15.9 | 55 | 100 | 0.107 |
| K050-0810X100 | 1/2 | 12.7 | 5/8 | 15.9 | 30 | 100 | 0.060 |
| K050-0812X100 | 1/2 | 12.7 | 3/4 | 19.1 | 45 | 100 | 0.134 |
| K050-1013X100 | 5/8 | 15.9 | 13/16 | 20.6 | 35 | 100 | 0.116 |
| K050-1014X100 | 5/8 | 15.9 | 7/8 | 22.2 | 40 | 100 | 0.161 |
| K050-1216X100 | 3/4 | 19.1 | 1 | 25.4 | 35 | 100 | 0.188 |
| K050-1418X100 | 7/8 | 22.2 | 1 1/8 | 28.6 | 30 | 100 | 0.214 |
| K050-1620X100 | 1 | 25.4 | 1 1/4 | 31.8 | 25 | 100 | 0.241 |
| K050-2024X50 | 1 1/4 | 31.8 | 1 1/2 | 38.1 | 20 | 50 | 0.296 |
| K050-2430X50 | 1 1/2 | 38.1 | 1 7/8 | 47.6 | 30 | 50 | 0.542 |
| K050-2432X50 | 1 1/2 | 38.1 | 2 | 50.8 | 35 | 50 | 0.750 |
| K050-3240X50 | 2 | 50.8 | 2 1/2 | 63.5 | 35 | 50 | 0.964 |



Because we continually examine ways to improve our products, we reserve the right to alter specifications without notice.

Hose and Fittings for the Food and Beverage Industries

Food Grade Liquid Transfer Tubing

Kuri Tec® Extra Flexible, Clear PVC Tubing

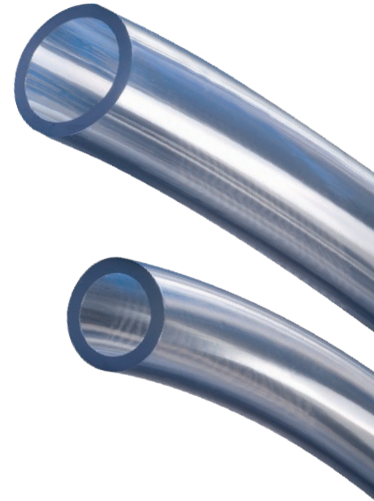
General Applications: Transfer of potable water, liquid foods and beverages

Construction: 68 Shore "A" durometer, food grade PVC.

Service Temperature Range: +25°F (-4°C) to +150°F (+65°C)

Compliances: FDA, Phthalate Free, RoHS

| Part Number | Nominal ID | | Nominal OD | | Working Pressure (psi) at 70°F | Length (ft) | Weight (lbs/ft) |
|---------------|------------|------|------------|------|--------------------------------|-------------|-----------------|
| | (in) | (mm) | (in) | (mm) | | | |
| K018-0204X100 | 1/8 | 3.2 | 1/4 | 6.4 | 65 | 100 | 0.020 |
| K018-0305X100 | 3/16 | 4.8 | 5/16 | 7.9 | 55 | 100 | 0.027 |
| K018-0306X100 | 3/16 | 4.8 | 3/8 | 9.5 | 60 | 100 | 0.045 |
| K018-0406X100 | 1/4 | 6.4 | 3/8 | 9.5 | 55 | 100 | 0.034 |
| K018-0407X100 | 1/4 | 6.4 | 7/16 | 11.1 | 58 | 100 | 0.055 |
| K018-0507X100 | 5/16 | 7.9 | 7/16 | 11.1 | 50 | 100 | 0.040 |
| K018-0508X100 | 5/16 | 7.9 | 1/2 | 12.7 | 55 | 100 | 0.065 |
| K018-0608X100 | 3/8 | 9.5 | 1/2 | 12.7 | 45 | 100 | 0.047 |
| K018-0609X100 | 3/8 | 9.5 | 9/16 | 14.3 | 50 | 100 | 0.075 |
| K018-0709X100 | 7/16 | 11.1 | 9/16 | 14.3 | 35 | 100 | 0.053 |
| K018-0810X100 | 1/2 | 12.7 | 5/8 | 15.9 | 30 | 100 | 0.060 |
| K018-1013X100 | 5/8 | 15.9 | 13/16 | 20.6 | 35 | 100 | 0.116 |



Kuri Tec® Clear, Ether-Based Polyurethane Tubing

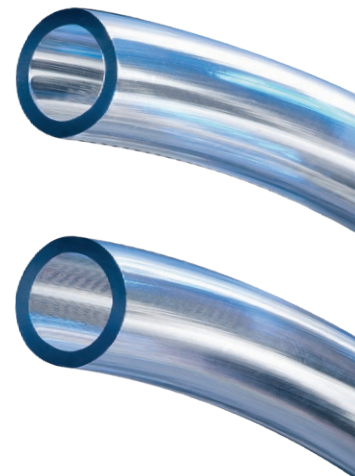
General Applications: Transfer of oily liquid foods such as olive, sunflower and soybean oils

Construction: 85 Shore "A" food grade, ether-based polyurethane.

Service Temperature Range: -40°F (-40°C) to +175°F (+80°C)

Compliances: FDA, Phthalate Free, RoHS

| Part Number | Nominal ID | | Nominal OD | | Working Pressure (psi) at 70°F | Length (ft) | Weight (lbs/ft) |
|---------------|------------|------|------------|------|--------------------------------|-------------|-----------------|
| | (in) | (mm) | (in) | (mm) | | | |
| 2600-0204X100 | 1/8 | 3.2 | 1/4 | 6.4 | 100 | 100 | 0.020 |
| 2600-0305X100 | 3/16 | 4.8 | 5/16 | 7.9 | 75 | 100 | 0.030 |
| 2600-0406X100 | 1/4 | 6.4 | 3/8 | 9.5 | 60 | 100 | 0.035 |
| 2600-0507X100 | 5/16 | 7.9 | 7/16 | 11.1 | 50 | 100 | 0.040 |
| 2600-0608X100 | 3/8 | 9.5 | 1/2 | 12.7 | 45 | 100 | 0.050 |
| 2600-0812X100 | 1/2 | 12.7 | 3/4 | 19.1 | 60 | 100 | 0.130 |



Because we continually examine ways to improve our products, we reserve the right to alter specifications without notice.

Hose and Fittings for the Food and Beverage Industries

Food Grade Dry Material Handling Hoses

Tigerflex™ Food Grade PVC Material Handling Hose

General Applications: Food processing, manufacturing, pharmaceuticals, plastics, poultry

Construction: Food grade PVC tube with rigid PVC helix.

Service Temperature Range: -4°F (-20°C) to +150°F (+65°C)

Compliances: 3A, FDA, Phthalate Free, RoHS, USDA

| Part Number | Hose Inner Diameter (in) | Working Pressure (psi) at 68°F | Length (ft) | Weight (lbs/ft) |
|--------------|--------------------------|--------------------------------|-------------|-----------------|
| WT100X100/50 | 1 | 55 | 100/50 | 0.21 |
| WT125X100/50 | 1 1/4 | 50 | 100/50 | 0.28 |
| WT150X100/50 | 1 1/2 | 50 | 100/50 | 0.35 |
| WT200X100/50 | 2 | 40 | 100/50 | 0.56 |
| WT225X100/50 | 2 1/4 | 40 | 100/50 | 0.65 |
| WT250X100/50 | 2 1/2 | 40 | 100/50 | 0.77 |
| WT300X100/50 | 3 | 40 | 100/50 | 1.10 |
| WT350X100/50 | 3 1/2 | 35 | 100/50 | 1.48 |
| WT400X100/50 | 4 | 35 | 100/50 | 1.80 |
| WT400x100/50 | 4 | 35 | 100/50 | 1.80 |
| WT500X50/20 | 5 | 30 | 50/20 | 2.34 |
| WT600X50/20 | 6 | 30 | 50/20 | 3.70 |
| WT800X50/20 | 8 | 20 | 50/20 | 5.53 |
| WT45MX100/50 | 45 mm | 45 | 100/50 | 0.44 |
| WT57MX100/50 | 57 mm | 40 | 100/50 | 0.64 |
| WT60MX100/50 | 60 mm | 40 | 100/50 | 0.71 |



Tigerflex™ Food Grade PVC Material Handling Hose with Grounding Wire

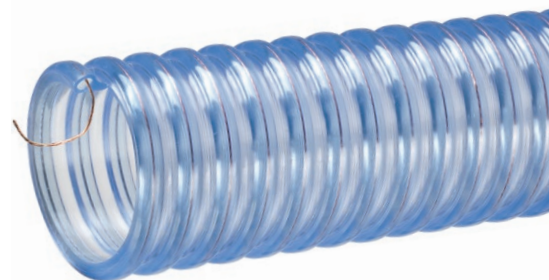
General Applications: Food processing, manufacturing, pharmaceuticals, plastics, poultry

Construction: Food grade PVC tube with rigid PVC helix and grounding wire.

Service Temperature Range: -4°F (-20°C) to +150°F (+65°C)

Compliances: FDA, Phthalate Free, RoHS, USDA

| Part Number | Hose Inner Diameter (in) | Working Pressure (psi) at 68°F | Length (ft) | Weight (lbs/ft) |
|--------------|--------------------------|--------------------------------|-------------|-----------------|
| WE125X100/50 | 1 1/4 | 50 | 100/50 | 0.33 |
| WE150X100/50 | 1 1/2 | 50 | 100/50 | 0.43 |
| WE200X100/50 | 2 | 40 | 100/50 | 0.58 |
| WE225X100/50 | 2 1/4 | 40 | 100/50 | 0.65 |
| WE250X100/50 | 2 1/2 | 40 | 100/50 | 0.89 |
| WE300X100/50 | 3 | 40 | 100/50 | 1.25 |
| WE350X100/50 | 3 1/2 | 35 | 100/50 | 1.55 |
| WE400X100/50 | 4 | 35 | 100/50 | 1.93 |
| WE500X50/20 | 5 | 30 | 50/20 | 2.40 |
| WE600X50/20 | 6 | 30 | 50/20 | 3.70 |
| WE800X50/20 | 8 | 20 | 50/20 | 5.62 |
| WE45MX100/50 | 45 mm | 45 | 100/50 | 0.46 |
| WE57MX100/50 | 57 mm | 40 | 100/50 | 0.64 |
| WE60MX100/50 | 60 mm | 40 | 100/50 | 0.71 |



Because we continually examine ways to improve our products, we reserve the right to alter specifications without notice.

Hose and Fittings for the Food and Beverage Industries

Food Grade Dry Material Handling Hoses (High Abrasion)

Tigerflex™ Food Grade Polyurethane Lined Material Handling Hose with Grounding Wire

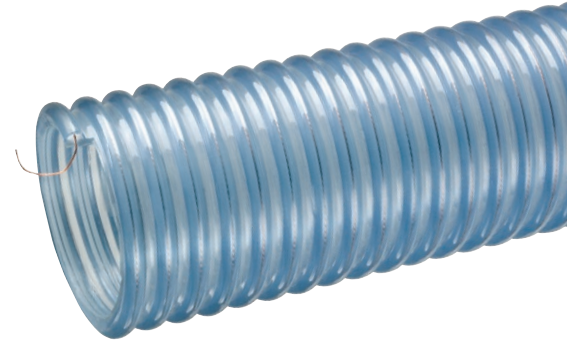
General Applications: Food processing, manufacturing, pharmaceuticals, plastics

Construction: Food grade, abrasion resistant polyurethane liner, PVC helix, with PVC cover and grounding wire.

Service Temperature Range: -40°F (-40°C) to +150°F (+65°C)

Compliances: FDA, Phthalate Free, RoHS

| Part Number | Hose Inner Diameter (in) | Working Pressure (psi) at 68°F | Length (ft) | Weight (lbs/ft) |
|-------------|--------------------------|--------------------------------|-------------|-----------------|
| 2001-150X60 | 1 1/2 | 50 | 60 | 0.48 |
| 2001-200X60 | 2 | 40 | 60 | 0.67 |
| 2001-250X60 | 2 1/2 | 40 | 60 | 0.92 |
| 2001-300X60 | 3 | 40 | 60 | 1.35 |
| 2001-400X60 | 4 | 35 | 60 | 2.17 |
| 2001-500X20 | 5 | 35 | 20 | 2.77 |
| 2001-600X20 | 6 | 30 | 20 | 3.90 |
| 2001-800X20 | 8 | 30 | 20 | 6.65 |



Tigerflex™ Voltbuster™ Highly Static Dissipative Polyurethane Material Handling Hose with Grounding Wire

General Applications: Food processing, manufacturing, pharmaceuticals, plastics

Construction: Food grade, abrasion resistant polyurethane tube, PVC helix and grounding wire.

Service Temperature Range: -40°F (-40°C) to +150°F (+65°C)

Compliances: FDA, Phthalate Free, RoHS

| Part Number | Hose Inner Diameter (in) | Working Pressure (psi) at 68°F | Length (ft) | Weight (lbs/ft) |
|-------------|--------------------------|--------------------------------|-------------|-----------------|
| VOLT150X100 | 1 1/2 | 40 | 100 | 0.31 |
| VOLT150X60 | 1 1/2 | 40 | 60 | 0.31 |
| VOLT200X100 | 2 | 40 | 100 | 0.61 |
| VOLT200X60 | 2 | 40 | 60 | 0.61 |
| VOLT250X100 | 2 1/2 | 40 | 100 | 0.76 |
| VOLT300X100 | 3 | 40 | 100 | 0.91 |
| VOLT400X100 | 4 | 35 | 100 | 1.70 |
| VOLT400X20 | 4 | 35 | 20 | 1.70 |
| VOLT500X20 | 5 | 35 | 20 | 2.13 |
| VOLT600X20 | 6 | 30 | 20 | 2.53 |
| VOLT800X20 | 8 | 30 | 20 | 3.30 |



Because we continually examine ways to improve our products, we reserve the right to alter specifications without notice.

Hose and Fittings for the Food and Beverage Industries

Food Grade Ducting Hoses

Flexair™ Urevent™ Food Grade Polyurethane Ducting/Material Handling Hose

General Applications: In plant transfer of dry materials and powders

Construction: Food grade, ether polyurethane tube with steel wire helix.

Service Temperature Range: -65°F (-54°C) to +225°F (+107°C)

Compliances: FDA, Phthalate Free, ROHS

| Part Number | Hose Inner Diameter (in) | Working Pressure (psi) at 68°F | Length (ft) | Weight (lbs/ft) |
|---------------|--------------------------|--------------------------------|-------------|-----------------|
| URE-CL200X25 | 2 | 31 | 25 | 0.36 |
| URE-CL250X25 | 2 1/2 | 31 | 25 | 0.40 |
| URE-CL300X25 | 3 | 30 | 25 | 0.44 |
| URE-CL400X25 | 4 | 26 | 25 | 0.62 |
| URE-CL500X25 | 5 | 22 | 25 | 0.65 |
| URE-CL600X25 | 6 | 20 | 25 | 0.84 |
| URE-CL800X25 | 8 | 14 | 25 | 1.40 |
| URE-CL1000X25 | 10 | 11 | 25 | 1.93 |
| URE-CL1200X25 | 12 | 10 | 25 | 2.26 |



Flexair™ Urevent™ Heavy Duty Food Grade Polyurethane Material Handling Hose

General Applications: In plant transfer of dry materials and powders

Construction: Food grade, ether polyurethane tube with steel wire helix.

Service Temperature Range: -65°F (-54°C) to +225°F (+107°C)

Compliances: FDA, Phthalate Free, ROHS

| Part Number | Hose Inner Diameter (in) | Working Pressure (psi) at 68°F | Length (ft) | Weight (lbs/ft) |
|----------------|--------------------------|--------------------------------|-------------|-----------------|
| UREH-CL400X25 | 4 | 26 | 25 | 0.73 |
| UREH-CL500X25 | 5 | 22 | 25 | 0.84 |
| UREH-CL600X25 | 6 | 20 | 25 | 1.20 |
| UREH-CL800X25 | 8 | 14 | 25 | 1.67 |
| UREH-CL1000X25 | 10 | 11 | 25 | 2.03 |
| UREH-CL1200X25 | 12 | 10 | 25 | 2.47 |



Tigerflex™ Food Grade Ducting/Light Material Handling Hose

General Applications: Ducting, ventilation and fume removal

Construction: Food grade, PVC tube with rigid PVC helix and grounding wire.

Service Temperature Range: -4°F (-20°C) to +150°F (+65°C)

Compliances: 3-A, FDA, Phthalate Free, RoHS, USDA

| Part Number | Hose Inner Diameter (in) | Working Pressure (psi) at 68°F | Length (ft) | Weight (lbs/ft) |
|-------------|--------------------------|--------------------------------|-------------|-----------------|
| GTFE150X100 | 1 1/2 | 20 | 100 | 0.23 |
| GTFE200X100 | 2 | 15 | 100 | 0.30 |
| GTFE250X100 | 2 1/2 | 10 | 100 | 0.39 |
| GTFE300X100 | 3 | 10 | 100 | 0.50 |
| GTFE400X100 | 4 | 8 | 100 | 0.77 |
| GTFE600X50 | 6 | 6 | 50 | 1.08 |
| GTFE800X50 | 8 | 4 | 50 | 1.74 |



Because we continually examine ways to improve our products, we reserve the right to alter specifications without notice.

Hose and Fittings for the Food and Beverage Industries

Facilities Washdown Hoses

Alfagomma® T350LL/LH Washdown Hose

General Applications: General washdown service, using hot water or low pressure saturated steam

Construction: White EPDM tube, high tensile textile cords and EPDM cover.

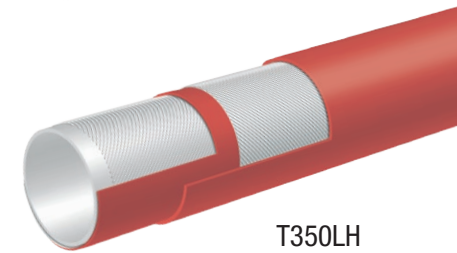
Service Temperature Range: Water -40°F (-40°C) to +248°F (+120°C), Steam to +330°F (+165°C)

Compliances: 3-A, FDA, Phthalate Free, RoHS

| Part Number | Nominal ID | | Nominal OD | | Working Pressure (psi) | | Length (ft) | Weight (lbs/ft) |
|---------------|------------|------|------------|------|------------------------|-------|-------------|-----------------|
| | (in) | (mm) | (in) | (mm) | Water | Steam | | |
| T350LL050X200 | 1/2 | 13 | 0.91 | 23 | 225 | 90 | 200 | 0.27 |
| T350LL062X200 | 5/8 | 16 | 1.02 | 26 | 225 | 90 | 200 | 0.31 |
| T350LL075X200 | 3/4 | 19 | 1.22 | 31 | 225 | 90 | 200 | 0.44 |
| T350LH075X200 | 3/4 | 19 | 1.22 | 31 | 225 | 90 | 200 | 0.44 |
| T350LL100X200 | 1 | 25 | 1.46 | 37 | 225 | 90 | 200 | 0.54 |
| T350LH100X200 | 1 | 25 | 1.46 | 37 | 225 | 90 | 200 | 0.54 |
| T350LL125X200 | 1 1/4 | 32 | 1.81 | 46 | 225 | 90 | 200 | 0.63 |
| T350LL150X200 | 1 1/2 | 38 | 2.05 | 52 | 225 | 90 | 200 | 0.74 |
| T350LL200X200 | 2 | 51 | 2.64 | 67 | 225 | 90 | 200 | 1.12 |



T350LL



T350LH



Alfagomma® T351LL/LG Washdown Hose with Tapered Nozzle

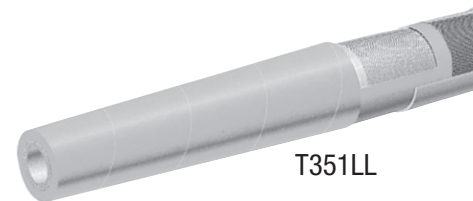
General Applications: General washdown service, using hot water or cold water

Construction: White EPDM tube, high tensile textile cords and EPDM cover.

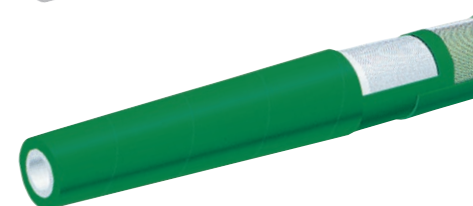
Service Temperature Range: -40°F (-40°C) to +248°F (+120°C)

Compliances: 3-A, FDA, Phthalate Free, RoHS

| Part Number | Nominal ID | | Nominal OD | | Working Pressure (psi) at 70°F | Length (ft) | Weight (lbs/ft) |
|--------------|------------|------|------------|------|--------------------------------|-------------|-----------------|
| | (in) | (mm) | (in) | (mm) | | | |
| T351LL075X50 | 3/4 | 19 | 1.22 | 31 | 150 | 50 | 0.44 |
| T351LG075X50 | 3/4 | 19 | 1.22 | 31 | 150 | 50 | 0.44 |
| T351LL100X50 | 1 | 25 | 1.46 | 37 | 150 | 50 | 0.54 |
| T351LG100X50 | 1 | 25 | 1.46 | 37 | 150 | 50 | 0.54 |
| T351LL125X50 | 1 1/4 | 32 | 1.81 | 46 | 150 | 50 | 0.78 |
| T351LG125X50 | 1 1/4 | 32 | 1.81 | 46 | 150 | 50 | 0.78 |
| T351LL150X50 | 1 1/2 | 38 | 2.05 | 52 | 150 | 50 | 0.91 |
| T351LG150X50 | 1 1/2 | 38 | 2.05 | 52 | 150 | 50 | 0.91 |



T351LL



T351LG

Because we continually examine ways to improve our products, we reserve the right to alter specifications without notice.

Hose and Fittings for the Food and Beverage Industries

Food Grade Bulk Material Handling Hoses (High Abrasion)

Tigerflex™ Heavy Duty Fabric Reinforced Bulk Material Handling Hose

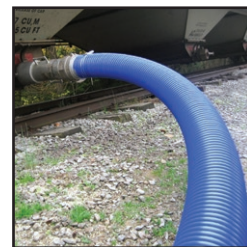
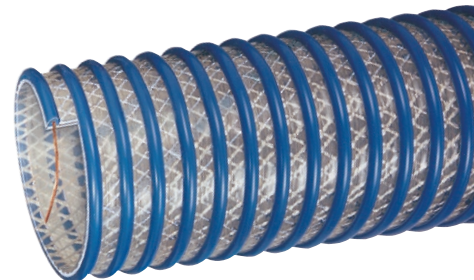
General Applications: Bulk truck and railcar unloading, heavy duty material handling

Construction: Food grade polyurethane, polyester fabric reinforcement, rigid PVC helix and grounding wire.

Service Temperature Range: -40°F (-40°C) to +150°F (+65°C)

Compliances: FDA, Phthalate Free, RoHS, USDA

| Part Number | Hose Inner Diameter (in) | Working Pressure (psi) at 68°F | Length (ft) | Weight (lbs/ft) |
|--------------|--------------------------|--------------------------------|-------------|-----------------|
| 2020-200X100 | 2 | 80 | 100 | 0.94 |
| 2020-300X100 | 3 | 70 | 100 | 1.20 |
| 2020-400X100 | 4 | 65 | 100 | 1.60 |
| 2020-400X20 | 4 | 65 | 20 | 1.60 |
| 2020-500X20 | 5 | 45 | 20 | 2.45 |
| 2020-600X20 | 6 | 40 | 20 | 2.86 |
| 2020-800X20 | 8 | 35 | 20 | 4.69 |



Tigerflex™ Voltbuster™ Heavy Duty Fabric Reinforced Bulk Material Handling Hose

General Applications: Bulk truck and railcar unloading, heavy duty material handling

Construction: Food grade polyurethane, polyester fabric reinforcement, rigid PVC helix and grounding wire.

Service Temperature Range: -40°F (-40°C) to +150°F (+65°C)

Compliances: FDA, Phthalate Free, RoHS

| Part Number | Hose Inner Diameter (in) | Working Pressure (psi) at 68°F | Length (ft) | Weight (lbs/ft) |
|---------------|--------------------------|--------------------------------|-------------|-----------------|
| VLT-SD200X100 | 2 | 75 | 100 | 0.77 |
| VLT-SD300X100 | 3 | 70 | 100 | 1.22 |
| VLT-SD400X100 | 4 | 65 | 100 | 1.85 |
| VLT-SD400X20 | 4 | 65 | 20 | 1.85 |
| VLT-SD500X20 | 5 | 45 | 20 | 2.43 |
| VLT-SD600X20 | 6 | 40 | 20 | 3.05 |



Because we continually examine ways to improve our products, we reserve the right to alter specifications without notice.

Hose and Fittings for the Food and Beverage Industries

Food Grade Bulk Material Handling Hoses (High Abrasion)

Alfagomma® T720LG Food Suction & Discharge Hose

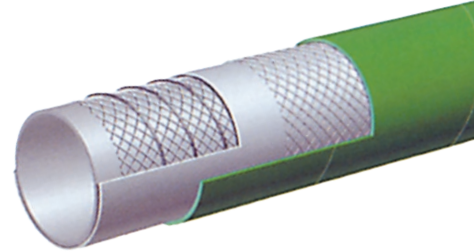
General Applications: Transfer of abrasive materials such as grains and flour

Construction: 3/16" thick natural rubber tube with static wire, high tensile textile cords, steel helix wire and SBR/EPDM cover.

Service Temperature Range: -22°F (-30°C) to +176°F (+80°C)

Compliances: FDA, Phthalate Free, RoHS

| Part Number | Nominal ID | | Nominal OD | | Working Pressure (psi) at 70°F | Length (ft) | Weight (lbs/ft) |
|------------------|------------|------|------------|------|--------------------------------|-------------|-----------------|
| | (in) | (mm) | (in) | (mm) | | | |
| T720LG200X100 | 2 | 51 | 2.64 | 67 | 150 | 100 | 1.23 |
| T720LG300X100 | 3 | 76 | 3.62 | 92 | 150 | 100 | 1.91 |
| T720LG400X100/50 | 4 | 102 | 4.65 | 118 | 150 | 100/50 | 2.63 |
| T720LG500X50/20 | 5 | 127 | 5.71 | 145 | 75 | 50/20 | 3.81 |
| T720LG600X50/20 | 6 | 152 | 6.69 | 170 | 75 | 50/20 | 4.72 |
| T720LG800X20 | 8 | 203 | 8.78 | 223 | 75 | 20 | 7.01 |



Alfagomma® T714LG Corrugated Food Suction & Discharge Hose

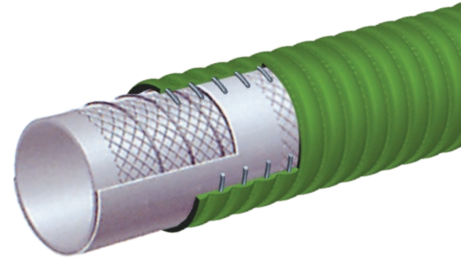
General Applications: Transfer of abrasive materials such as grains and flour

Construction: 3/16" thick natural rubber tube with static wire, high tensile textile cords, steel wire helix and NR/EPDM cover.

Service Temperature Range: -22°F (-30°C) to +176°F (+80°C)

Compliances: FDA, Phthalate Free, RoHS

| Part Number | Nominal ID | | Nominal OD | | Working Pressure (psi) at 70°F | Length (ft) | Weight (lbs/ft) |
|-----------------|------------|------|------------|------|--------------------------------|-------------|-----------------|
| | (in) | (mm) | (in) | (mm) | | | |
| T714LG500X50/20 | 5 | 127 | 5.63 | 143 | 75 | 50/20 | 3.80 |
| T714LG600X50/20 | 6 | 152 | 6.85 | 174 | 75 | 50/20 | 4.75 |
| T714LG800X20 | 8 | 203 | 8.94 | 227 | 75 | 20 | 7.01 |



Alfagomma® T760LE Food Discharge Hose

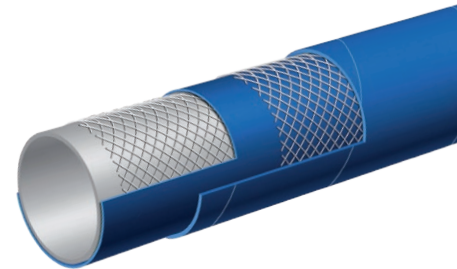
General Applications: Discharge or delivery of dry bulk food products

Construction: 3/16" thick natural rubber tube with static wire, high tensile textile cords and SBR/EPDM cover.

Temperature Range: -22°F (-30°C) to +176°F (+80°C)

Compliances: FDA, Phthalate Free, RoHS

| Part Number | Nominal ID | | Nominal OD | | Working Pressure (psi) at 70°F | Length (ft) | Weight (lbs/ft) |
|---------------|------------|------|------------|------|--------------------------------|-------------|-----------------|
| | (in) | (mm) | (in) | (mm) | | | |
| T760LE400X100 | 4 | 102 | 4.65 | 118 | 75 | 100 | 2.12 |



Because we continually examine ways to improve our products, we reserve the right to alter specifications without notice.

Hose and Fittings for the Food and Beverage Industries

Food Grade Bulk Material Handling Hoses (High Abrasion)

Hose Tec® Stainless Steel, Unlined Bulk Material Transfer Hose Assemblies

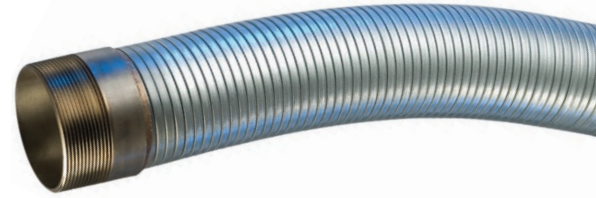
General Applications: Bulk truck and railcar unloading, heavy duty material handling

Construction: Stainless steel tube with stainless steel ends.

Maximum Service Temperature: +1500°F (+815°C)

Hose Ends: Male NPT

| Part Number | Hose Inner Diameter (in) | Length (ft) | Weight (lbs/ft) |
|-------------------|--------------------------|-------------|-----------------|
| HTS4200-300X10TOE | 3 | 10 | 2.20 |
| HTS4200-400X10TOE | 4 | 10 | 2.80 |
| HTS4200-500X10TOE | 5 | 10 | 3.40 |
| HTS4200-600X10TOE | 6 | 10 | 4.20 |



Hose Tec® Stainless Steel, Lined Bulk Material Transfer Hose Assemblies

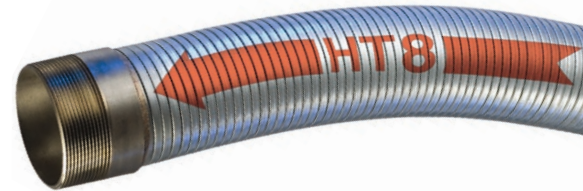
General Applications: Bulk truck and railcar unloading, heavy duty material handling

Construction: Stainless steel tube with stainless steel ends.

Maximum Service Temperature: +1500°F (+815°C)

Hose Ends: Male NPT

| Part Number | Hose Inner Diameter (in) | Length (ft) | Weight (lbs/ft) |
|--------------------|--------------------------|-------------|-----------------|
| HTSS5180-400X10TOE | 4 | 10 | 3.80 |
| HTSS5180-400X12TOE | 4 | 12 | 3.75 |
| HTSS5180-400X15TOE | 4 | 15 | 3.73 |
| HTSS5180-400X19TOE | 4 | 19 | 3.68 |
| HTSS5180-500X15TOE | 5 | 15 | 5.00 |
| HTSS5180-600X10TOE | 6 | 10 | 6.20 |



Because we continually examine ways to improve our products, we reserve the right to alter specifications without notice.

Hose and Fittings for the Food and Beverage Industries

Sanitary Fittings

TCS-SS, RHAS-SS, and BHAS-SS

Features and Advantages:

- Corrosion resistant 316L stainless steel.
- Smooth 32 Ra food contact finish surface.
- Compliant with 3-A 63-03 and certified to 3-A RPSCQL 62-02
- Uses SPHDS, DPHDS or DBS series clamps. (pg 22)



Sanitary Crimp Fitting Tri-Clamp x Hose Shank

| Size (in) | Part Number |
|-----------|-------------|
| 1 | TCS-SS100 |
| 1 1/2 | TCS-SS150 |
| 2 | TCS-SS200 |
| 2 1/2 | TCS-SS250 |
| 3 | TCS-SS300 |
| 4 | TCS-SS400 |



Kuriyama Sanitary Hose Assemblies are certified to 3A Sanitary Standards.



Sanitary Clamp Fitting Tri-Clamp x Short Hose Shank

| Fitting End Size (in) | Hose Shank Size (in) | Part Number |
|-----------------------|----------------------|---------------|
| 1 | 3/8 | RHAS-SS100038 |
| 1 | 1/2 | RHAS-SS100050 |
| 1 | 3/4 | RHAS-SS100075 |
| 1 | 1 | RHAS-SS100 |
| 1 1/2 | 1/2 | RHAS-SS150050 |
| 1 1/2 | 3/8 | RHAS-SS150062 |
| 1 1/2 | 3/4 | RHAS-SS150075 |
| 1 1/2 | 1 | RHAS-SS150100 |
| 1 1/2 | 1 1/2 | RHAS-SS150 |
| 2 | 1 1/2 | RHAS-SS200150 |
| 2 | 2 | RHAS-SS200 |
| 2 1/2 | 2 1/2 | RHAS-SS250 |
| 3 | 3 | RHAS-SS300 |
| 4 | 4 | RHAS-SS400 |
| 6 | 6 | RHAS-SS600 |



Sanitary Clamp Fitting Tri-Clamp x Long Hose Shank

| Size (in) | Part Number |
|-----------|-------------|
| 1 | BHAS-SS100 |
| 1 1/4 | BHAS-SS125 |
| 1 1/2 | BHAS-SS150 |
| 2 | BHAS-SS200 |
| 3 | BHAS-SS300 |
| 4 | BHAS-SS400 |

Because we continually examine ways to improve our products, we reserve the right to alter specifications without notice.

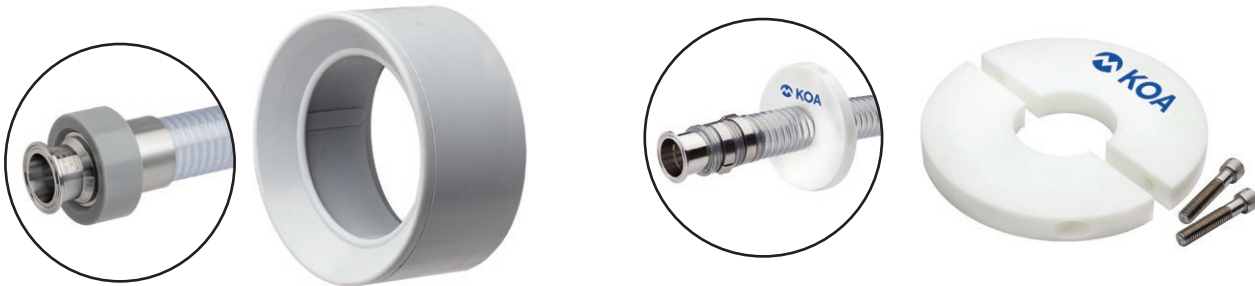
Hose and Fittings for the Food and Beverage Industries

Sanitary Fittings



Sanitary Clamps (for Tri-Clamp Fittings)

| Size (in) | Single Pin Part Number | Double Pin Part Number | Bolted Part Number |
|-----------|------------------------|------------------------|--------------------|
| 1 & 1 1/2 | SPHDS150 | DPHDS150 | DBS150 |
| 2 | SPHDS200 | DPHDS200 | DBS200 |
| 2 1/2 | SPHDS250 | DPHDS250 | — |
| 3 | SPHDS300 | DPHDS300 | DBS300 |
| 4 | SPHDS400 | DPHDS400 | DBS400 |



Sanitary Hose Bumpers

| Size (in) | Part Number |
|-----------|-------------|
| 1 1/2 | SHB150 |
| 2 | SHB200 |
| 2 1/2 | SHB250 |
| 3 | SHB300 |

Sanitary Hose Risers

| Hose Shank Size (in) | Fits Hose (in) | Part Number |
|----------------------|----------------|-------------|
| 1 1/2 | 1.80 - 2.15 | SHR150 |
| 2 | 2.10 - 2.35 | SHR150200 |
| 2 1/2 | 2.65 - 2.90 | SHR250 |
| 3 | 3.30 - 3.75 | SHR200300 |
| 4 | 4.55 - 5.31 | SHR400 |



Sanitary Tri-clamp End Cap

| Fitting End Size (in) | Cap End Size (in) | Part Number |
|-----------------------|-------------------|---------------|
| 1 & 1 1/2 | 1 1/2 | TCSC-SS100150 |
| 2 | 2 | TCSC-SS200 |
| 2 1/2 | 2 1/2 | TCSC-SS250 |
| 3 | 3 | TCSC-SS300 |
| 4 | 4 | TCSC-SS400 |

- Corrosion resistant 316L stainless steel.
- Smooth 32 Ra food contact finish surface.
- Certified to 3-A 63-03

Because we continually examine ways to improve our products, we reserve the right to alter specifications without notice.

Hose and Fittings for the Food and Beverage Industries

Sanitary Fittings



Sanitary SS316 Bevel Seat x Hose Shank

| Size (in) | Part Number |
|-----------|-------------|
| 1 | FBS-SS100 |
| 1 1/2 | FBS-SS150 |
| 2 | FBS-SS200 |
| 2 1/2 | FBS-SS250 |
| 3 | FBS-SS300 |
| 4 | FBS-SS400 |



Sanitary Hex Nut (for FBS-SS Series)

| Size (in) | Part Number |
|-----------|-------------|
| 1 | HNS100 |
| 1 1/2 | HNS150 |
| 2 | HNS200 |
| 2 1/2 | HNS250 |
| 3 | HNS300 |
| 4 | HNS400 |



Single Side Hex Wrench (for use with HNS hex nut)

| Hose Shank Size (in) | Part Number |
|----------------------|-------------|
| 1 | SSHW100 |
| 1 1/2 | SSHW150 |
| 2 | SSHW200 |
| 2 1/2 | SSHW250 |
| 3 | SSHW300 |
| 4 | SSHW400 |



Double Side Hex Wrench (for use with HNS hex nut)

| Hose Shank Size (in) | Part Number |
|----------------------|-------------|
| 1 x 1 1/2 | TSHW100150 |
| 2 x 3 | TSHW200300 |



Sanitary SS316 Female I-Line x Hose Shank

| Hose Shank Size (in) | Part Number |
|----------------------|-------------|
| 1 1/2 | FILS-SS150 |
| 2 | FILS-SS200 |
| 3 | FILS-SS300 |
| 4 | FILS-SS400 |



Sanitary I-line Clamps (for FILS-SS Series)

| Hose Shank Size (in) | Part Number |
|----------------------|-------------|
| 1 1/2 | SPILC150 |
| 2 | SPILC200 |
| 3 | SPILC300 |
| 4 | SPILC400 |

Because we continually examine ways to improve our products, we reserve the right to alter specifications without notice.

Hose and Fittings for the Food and Beverage Industries

Sanitary Gaskets

Sanitary Buna-N Tri-Clamp Gasket Black

Color Code: ● (1 Red Dot)

Certification: 3A 18-03 sanitary standard

Temperature Range: -65°F (-54°C) to +210°F (+99°C)

| Part Number | Size (in) | Weight Each (lbs) | Standard Carton |
|---------------|-----------|-------------------|-----------------|
| BUNA-40MPU100 | 1 | 0.012 | 25 |
| BUNA-40MPU150 | 1 1/2 | 0.013 | 25 |
| BUNA-40MPU200 | 2 | 0.014 | 25 |
| BUNA-40MPU250 | 2 1/2 | 0.018 | 25 |
| BUNA-40MPU300 | 3 | 0.020 | 25 |
| BUNA-40MPU400 | 4 | 0.030 | 25 |
| BUNA-40MPU600 | 6 | 0.040 | 25 |



Sanitary Buna-N Tri-Clamp Gasket White

Color Code: ● (1 Red Dot)

Certification: 3A 18-03 sanitary standard

Temperature Range: -65°F (-54°C) to +210°F (+99°C)

| Part Number | Size (in) | Weight Each (lbs) | Standard Carton |
|----------------|-----------|-------------------|-----------------|
| BUNA-40MPUW100 | 1 | 0.012 | 25 |
| BUNA-40MPUW150 | 1 1/2 | 0.013 | 25 |
| BUNA-40MPUW200 | 2 | 0.014 | 25 |
| BUNA-40MPUW250 | 2 1/2 | 0.018 | 25 |
| BUNA-40MPUW300 | 3 | 0.022 | 25 |
| BUNA-40MPUW400 | 4 | 0.034 | 25 |



Sanitary EPDM Tri-Clamp Gasket Black

Color Code: ● ● ● (3 Green Dots)

Certification: 3A 18-03 sanitary standard

Temperature Range: -60°F (-51°C) to +300°F (+149°C)

| Part Number | Size (in) | Weight Each (lbs) | Standard Carton |
|---------------|-----------|-------------------|-----------------|
| EPDM-40MPE100 | 1 | 0.012 | 25 |
| EPDM-40MPE150 | 1 1/2 | 0.013 | 25 |
| EPDM-40MPE200 | 2 | 0.014 | 25 |
| EPDM-40MPE250 | 2 1/2 | 0.016 | 25 |
| EPDM-40MPE300 | 3 | 0.020 | 25 |
| EPDM-40MPE400 | 4 | 0.030 | 25 |



Sanitary FKM Tri-Clamp Gasket Black

Color Code: ○ ● (1 White/1 Yellow Dot)

Certification: 3A 18-03 sanitary standards

Temperature Range: -20°F (-29°C) to +350°F (+177°C)

| Part Number | Size (in) | Weight Each (lbs) | Standard Carton |
|----------------|-----------|-------------------|-----------------|
| FKM-40MPSFY100 | 1 | 0.013 | 25 |
| FKM-40MPSFY150 | 1 1/2 | 0.014 | 25 |
| FKM-40MPSFY200 | 2 | 0.018 | 25 |
| FKM-40MPSFY300 | 3 | 0.030 | 25 |
| FKM-40MPSFY400 | 4 | 0.046 | 25 |



Because we continually examine ways to improve our products, we reserve the right to alter specifications without notice.

Hose and Fittings for the Food and Beverage Industries

Sanitary Gaskets

Sanitary Buna-N Bevel Seat Gasket Black

Color Code: ● (1 Red Dot)

Certification: 3A 18-03 sanitary standard

Temperature Range: -65°F (-54°C) to +210°F (+99°C)

| Part Number | Size (in) | Weight Each (lbs) | Standard Carton |
|---------------|-----------|-------------------|-----------------|
| BUNA-40BS0100 | 1 | 0.008 | 25 |
| BUNA-40BS0150 | 1 1/2 | 0.014 | 25 |
| BUNA-40BS0200 | 2 | 0.018 | 25 |
| BUNA-40BS0250 | 2 1/2 | 0.018 | 25 |
| BUNA-40BS0300 | 3 | 0.034 | 25 |
| BUNA-40BS0400 | 4 | 0.038 | 25 |



Sanitary EPDM Bevel Seat Gasket Black

Color Code: ● ● ● (3 Green Dots)

Certification: 3A 18-03 sanitary standard

Temperature Range: -60°F (-51°C) to +300°F (+149°C)

| Part Number | Size (in) | Weight Each (lbs) | Standard Carton |
|---------------|-----------|-------------------|-----------------|
| EPDM-40BSE100 | 1 | 0.008 | 25 |
| EPDM-40BSE150 | 1 1/2 | 0.014 | 25 |
| EPDM-40BSE200 | 2 | 0.018 | 25 |
| EPDM-40BSE250 | 2 1/2 | 0.026 | 25 |
| EPDM-40BSE300 | 3 | 0.034 | 25 |
| EPDM-40BSE400 | 4 | 0.038 | 25 |



Sanitary Buna-N I-Line Gasket Black

Color Code: ● (1 Red Dot)

Certification: 3A 18-03 sanitary standard

Temperature Range: -65°F (-54°C) to +210°F (+99°C)

| Part Number | Size (in) | Weight Each (lbs) | Standard Carton |
|--------------|-----------|-------------------|-----------------|
| BUNA-40IH150 | 1 1/2 | 0.006 | 25 |
| BUNA-40IH200 | 2 | 0.007 | 25 |
| BUNA-40IH300 | 3 | 0.012 | 25 |
| BUNA-40IH400 | 4 | 0.016 | 25 |



Sanitary EPDM I-Line Gasket Black

Color Code: ● ● ● (3 Green Dots)

Certification: 3A 18-03 sanitary standard

Temperature Range: -60°F (-51°C) to +300°F (+149°C)

| Part Number | Size (in) | Weight Each (lbs) | Standard Carton |
|--------------|-----------|-------------------|-----------------|
| EPDM-40IE150 | 1 1/2 | 0.006 | 25 |
| EPDM-40IE200 | 2 | 0.008 | 25 |
| EPDM-40IE300 | 3 | 0.014 | 25 |
| EPDM-40IE400 | 4 | 0.018 | 25 |



Because we continually examine ways to improve our products, we reserve the right to alter specifications without notice.

Hose and Fittings for the Food and Beverage Industries

Industrial Couplings



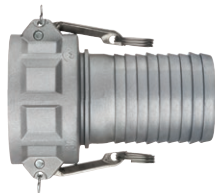
Part A Male Adapter x Female NPT

| Size (in) | Aluminum | Stainless Steel | Brass |
|-----------|-------------|-----------------|-------------|
| | Part Number | Part Number | Part Number |
| 2 | AL-A200 | SS-A200 | BR-A200 |
| 3 | AL-A300 | SS-A300 | BR-A300 |
| 4 | AL-A400 | SS-A400 | BR-A400 |
| 6 | AL-A600 | SS-A600 | BR-A600 |
| 8 | AL-A800 | - | - |



Part B Female Coupler x Male NPT

| Size (in) | Aluminum | Stainless Steel | Brass |
|-----------|-------------|-----------------|-------------|
| | Part Number | Part Number | Part Number |
| 2 | AL-B200 | SS-B200 | BR-B200 |
| 3 | AL-B300 | SS-B300 | BR-B300 |
| 4 | AL-B400 | SS-B400 | BR-B400 |
| 6 | AL-B600 | SS-B600 | BR-B600 |
| 8 | AL-B800 | - | - |



Part C Female Coupler x Hose Shank

| Size (in) | Aluminum | Stainless Steel | Brass |
|-----------|-------------|-----------------|-------------|
| | Part Number | Part Number | Part Number |
| 2 | AL-C200 | SS-C200 | BR-C200 |
| 3 | AL-C300 | SS-C300 | BR-C300 |
| 4 | AL-C400 | SS-C400 | BR-C400 |
| 6 | AL-C600 | SS-C600 | BR-C600 |
| 8 | AL-C800 | - | - |

Because we continually examine ways to improve our products, we reserve the right to alter specifications without notice.

Hose and Fittings for the Food and Beverage Industries

Industrial Couplings



Part D Female Coupler x Female NPT

| Size (in) | Aluminum | Stainless Steel | Brass |
|-----------|-------------|-----------------|-------------|
| | Part Number | Part Number | Part Number |
| 2 | AL-D200 | SS-D200 | BR-D200 |
| 3 | AL-D300 | SS-D300 | BR-D300 |
| 4 | AL-D400 | SS-D400 | BR-D400 |
| 6 | AL-D600 | SS-D600 | BR-D600 |
| 8 | AL-D800 | - | - |



Part E Male Adapter x Hose Shank

| Size (in) | Aluminum | Stainless Steel | Brass |
|-----------|-------------|-----------------|-------------|
| | Part Number | Part Number | Part Number |
| 2 | AL-E200 | SS-E200 | BR-E200 |
| 3 | AL-E300 | SS-E300 | BR-E300 |
| 4 | AL-E400 | SS-E400 | BR-E400 |
| 6 | AL-E600 | SS-E600 | BR-E600 |
| 8 | AL-E800 | - | - |



Part F Male Adapter x Male NPT

| Size (in) | Aluminum | Stainless Steel | Brass |
|-----------|-------------|-----------------|-------------|
| | Part Number | Part Number | Part Number |
| 2 | AL-F200 | SS-F200 | BR-F200 |
| 3 | AL-F300 | SS-F300 | BR-F300 |
| 4 | AL-F400 | SS-F400 | BR-F400 |
| 6 | AL-F600 | SS-F600 | BR-F600 |
| 8 | AL-F800 | - | - |

Because we continually examine ways to improve our products, we reserve the right to alter specifications without notice.

Hose and Fittings for the Food and Beverage Industries

Sanitary Ferrules

SCF-SS Series

Sanitary 304 Stainless Steel Crimp Ferrules

- Smooth 64RA surface finish
- Designed for use with TCS-SS, FBS-SS, FILS-SS and TES-SS series fittings



| Part Number | Hose ID (in) | Ferrule ID (in) | Wall Thickness (in) | Length (in) | Weight Each (lbs) | Standard Carton |
|-------------|--------------|-----------------|---------------------|-------------|-------------------|-----------------|
| SCF-SS10146 | 1 | 1.46 | 0.108 | 2.28 | 0.29 | 126 |
| SCF-SS10153 | 1 | 1.53 | 0.108 | 2.28 | 0.31 | 144 |
| SCF-SS10157 | 1 | 1.57 | 0.108 | 2.28 | 0.33 | 144 |
| SCF-SS10161 | 1 | 1.61 | 0.108 | 2.28 | 0.35 | 144 |
| SCF-SS10165 | 1 | 1.65 | 0.108 | 2.28 | 0.36 | 144 |
| SCF-SS10173 | 1 | 1.73 | 0.108 | 2.28 | 0.37 | 96 |
| SCF-SS15201 | 1 1/2 | 2.01 | 0.118 | 2.36 | 0.46 | 105 |
| SCF-SS15206 | 1 1/2 | 2.06 | 0.118 | 2.36 | 0.49 | 90 |
| SCF-SS15210 | 1 1/2 | 2.10 | 0.118 | 2.36 | 0.49 | 90 |
| SCF-SS15215 | 1 1/2 | 2.15 | 0.118 | 2.36 | 0.51 | 72 |
| SCF-SS15220 | 1 1/2 | 2.20 | 0.118 | 2.36 | 0.53 | 72 |
| SCF-SS15228 | 1 1/2 | 2.28 | 0.118 | 2.36 | 0.55 | 72 |
| SCF-SS15236 | 1 1/2 | 2.36 | 0.118 | 2.36 | 0.60 | 72 |
| SCF-SS20248 | 2 | 2.48 | 0.128 | 2.80 | 0.68 | 60 |
| SCF-SS20256 | 2 | 2.56 | 0.128 | 2.80 | 0.68 | 60 |
| SCF-SS20264 | 2 | 2.64 | 0.128 | 2.80 | 0.73 | 60 |
| SCF-SS20268 | 2 | 2.68 | 0.128 | 2.80 | 0.75 | 60 |
| SCF-SS20273 | 2 | 2.73 | 0.128 | 2.80 | 0.77 | 45 |
| SCF-SS20279 | 2 | 2.79 | 0.128 | 2.80 | 0.80 | 45 |
| SCF-SS20287 | 2 | 2.87 | 0.128 | 2.80 | 0.84 | 45 |
| SCF-SS20295 | 2 | 2.95 | 0.128 | 2.80 | 0.88 | 36 |
| SCF-SS25300 | 2 1/2 | 3.00 | 0.138 | 3.25 | 0.95 | 12 |
| SCF-SS25307 | 2 1/2 | 3.07 | 0.138 | 3.25 | 0.98 | 12 |
| SCF-SS25315 | 2 1/2 | 3.15 | 0.138 | 3.25 | 1.02 | 12 |
| SCF-SS25323 | 2 1/2 | 3.23 | 0.138 | 3.25 | 1.06 | 12 |
| SCF-SS25331 | 2 1/2 | 3.31 | 0.138 | 3.25 | 1.10 | 12 |
| SCF-SS25339 | 2 1/2 | 3.39 | 0.138 | 3.25 | 1.14 | 12 |
| SCF-SS25346 | 2 1/2 | 3.46 | 0.138 | 3.25 | 1.18 | 12 |
| SCF-SS30354 | 3 | 3.54 | 0.138 | 3.94 | 1.23 | 24 |
| SCF-SS30360 | 3 | 3.60 | 0.138 | 3.94 | 1.30 | 24 |
| SCF-SS30368 | 3 | 3.68 | 0.138 | 3.94 | 1.43 | 12 |
| SCF-SS30374 | 3 | 3.74 | 0.138 | 3.94 | 1.54 | 12 |
| SCF-SS30382 | 3 | 3.82 | 0.138 | 3.94 | 1.70 | 12 |
| SCF-SS30390 | 3 | 3.90 | 0.138 | 3.94 | 1.81 | 12 |
| SCF-SS30398 | 3 | 3.98 | 0.138 | 3.94 | 1.96 | 12 |
| SCF-SS30409 | 3 | 4.09 | 0.138 | 3.94 | 2.07 | 12 |
| SCF-SS40457 | 4 | 4.57 | 0.158 | 4.19 | 2.20 | 12 |
| SCF-SS40465 | 4 | 4.65 | 0.158 | 4.19 | 2.36 | 12 |
| SCF-SS40472 | 4 | 4.72 | 1.580 | 4.19 | 2.51 | 12 |
| SCF-SS40480 | 4 | 4.80 | 0.158 | 4.19 | 2.71 | 12 |
| SCF-SS40488 | 4 | 4.88 | 0.158 | 4.19 | 2.91 | 12 |
| SCF-SS40496 | 4 | 4.96 | 0.158 | 4.19 | 3.09 | 8 |
| SCF-SS40508 | 4 | 5.08 | 0.158 | 4.19 | 3.26 | 8 |
| SCF-SS40520 | 4 | 5.20 | 0.158 | 4.19 | 3.46 | 8 |
| SCF-SS40531 | 4 | 5.31 | 0.158 | 4.19 | 3.64 | 8 |

Because we continually examine ways to improve our products, we reserve the right to alter specifications without notice.

Hose and Fittings for the Food and Beverage Industries

KuriKrimp™ Ferrules

CRF-SS Series

Kuri-Crimp™ 304 Stainless Steel Crimp Ferrules

- Designed for use with TCS-SS, FBS-SS, FILS-SS and TES-SS series fittings



| Part Number | Hose ID (in) | Ferrule ID (in) | Wall Thickness (in) | Length (in) | Weight Each (lbs) | Standard Carton |
|-------------|--------------|-----------------|---------------------|-------------|-------------------|-----------------|
| CRF-SS10108 | 1 | 1.50 | 0.059 | 2.29 | 0.20 | 200 |
| CRF-SS10109 | 1 | 1.56 | 0.059 | 2.29 | 0.21 | 200 |
| CRF-SS10110 | 1 | 1.63 | 0.059 | 2.29 | 0.21 | 200 |
| CRF-SS10111 | 1 | 1.69 | 0.059 | 2.29 | 0.23 | 200 |
| CRF-SS10112 | 1 | 1.75 | 0.059 | 2.29 | 0.23 | 200 |
| CRF-SS10113 | 1 | 1.81 | 0.059 | 2.29 | 0.24 | 200 |
| CRF-SS15200 | 1 1/2 | 2.00 | 0.059 | 2.36 | 0.27 | 128 |
| CRF-SS15202 | 1 1/2 | 2.12 | 0.059 | 2.36 | 0.29 | 128 |
| CRF-SS15204 | 1 1/2 | 2.25 | 0.059 | 2.36 | 0.29 | 80 |
| CRF-SS15206 | 1 1/2 | 2.39 | 0.059 | 2.36 | 0.30 | 80 |
| CRF-SS15208 | 1 1/2 | 2.50 | 0.059 | 2.36 | 0.35 | 80 |
| CRF-SS20209 | 2 | 2.56 | 0.059 | 2.79 | 0.40 | 80 |
| CRF-SS20210 | 2 | 2.62 | 0.059 | 2.79 | 0.43 | 80 |
| CRF-SS20211 | 2 | 2.68 | 0.059 | 2.79 | 0.43 | 80 |
| CRF-SS20213 | 2 | 2.81 | 0.059 | 2.79 | 0.44 | 80 |
| CRF-SS20215 | 2 | 2.94 | 0.059 | 2.79 | 0.46 | 80 |
| CRF-SS25302 | 2 1/2 | 3.12 | 0.059 | 3.11 | 0.56 | 60 |
| CRF-SS25304 | 2 1/2 | 3.25 | 0.059 | 3.11 | 0.58 | 60 |
| CRF-SS25306 | 2 1/2 | 3.39 | 0.059 | 3.11 | 0.60 | 60 |
| CRF-SS25308 | 2 1/2 | 3.50 | 0.059 | 3.11 | 0.62 | 60 |
| CRF-SS30309 | 3 | 3.56 | 0.098 | 3.94 | 1.27 | 40 |
| CRF-SS30310 | 3 | 3.62 | 0.098 | 3.94 | 1.29 | 40 |
| CRF-SS30312 | 3 | 3.75 | 0.098 | 3.94 | 1.31 | 40 |
| CRF-SS30313 | 3 | 3.81 | 0.098 | 3.94 | 1.33 | 40 |
| CRF-SS30315 | 3 | 3.94 | 0.098 | 3.94 | 1.36 | 40 |
| CRF-SS30400 | 3 | 4.00 | 0.098 | 3.94 | 1.40 | 40 |
| CRF-SS40409 | 4 | 4.56 | 0.098 | 4.19 | 1.57 | 30 |
| CRF-SS40410 | 4 | 4.63 | 0.098 | 4.19 | 1.59 | 30 |
| CRF-SS40411 | 4 | 4.68 | 0.098 | 4.19 | 1.74 | 30 |
| CRF-SS40412 | 4 | 4.75 | 0.098 | 4.19 | 1.76 | 30 |
| CRF-SS40413 | 4 | 4.81 | 0.098 | 4.19 | 1.78 | 30 |
| CRF-SS40414 | 4 | 4.88 | 0.098 | 4.19 | 1.82 | 30 |
| CRF-SS40500 | 4 | 5.00 | 0.098 | 4.19 | 1.86 | 30 |
| CRF-SS40501 | 4 | 5.06 | 0.098 | 4.19 | 1.89 | 30 |

Because we continually examine ways to improve our products, we reserve the right to alter specifications without notice.

Hose and Fittings for the Food and Beverage Industries

Hose Clamps



**Zinc Plated Carbon Steel Spiral Double Bolt Clamp (For Counterclockwise Spiral Hoses)
Designed for Corrugated Tigerflex™ Hoses**

**Stainless Steel 304 Spiral Double Bolt Clamp (For Counterclockwise Spiral Hoses)
Designed for Corrugated Tigerflex™ Hoses**

| Part Number | Size (in) | Torque (ft lbs) | Weight Each (lbs) | Standard Carton |
|-------------|-----------|-----------------|-------------------|-----------------|
| SDBC-1.5 | 1 1/2 | 6 | 0.18 | 100 |
| SDBC-2 | 2 | 6 | 0.36 | 100 |
| SDBC-2.25 | 2 1/4 | 6 | 0.40 | 100 |
| SDBC-2.5 | 2 1/2 | 8 | 0.48 | 100 |
| SDBC-3 | 3 | 8 | 0.66 | 70 |
| SDBC-3.5 | 3 1/2 | 8 | 0.70 | 70 |
| SDBC-4 | 4 | 24 | 1.02 | 40 |
| SDBC-5 | 5 | 24 | 1.76 | 30 |
| SDBC-6 | 6 | 30 | 2.00 | 20 |
| SDBC-8 | 8 | 30 | 2.76 | 10 |
| SDBC-10 | 10 | 30 | 3.46 | 10 |
| SDBC-12 | 12 | 30 | 4.14 | 10 |

| Part Number | Size (in) | Torque (ft lbs) | Weight Each (lbs) | Standard Carton |
|-------------|-----------|-----------------|-------------------|-----------------|
| SDBC-SS-1.5 | 1 1/2 | 6 | 0.20 | 100 |
| SDBC-SS-2 | 2 | 6 | 0.40 | 100 |
| SDBC-SS-2.5 | 2 1/2 | 6 | 0.53 | 70 |
| SDBC-SS-3 | 3 | 8 | 0.73 | 70 |
| SDBC-SS-3.5 | 3 1/2 | 8 | 0.77 | 40 |
| SDBC-SS-4 | 4 | 24 | 1.12 | 40 |
| SDBC-SS-5 | 5 | 24 | 1.94 | 30 |
| SDBC-SS-6 | 6 | 30 | 2.20 | 20 |
| SDBC-SS-8 | 8 | 30 | 3.04 | 10 |
| SDBC-SS-10 | 10 | 30 | 3.81 | 10 |
| SDBC-SS-12 | 12 | 30 | 4.55 | 10 |



**Bridge Clamp for Tigerflex™ Ducting Hoses
300 Stainless Worm Gear Band
(Designed For Counterclockwise Spiral Hoses)**

**Bridge Clamp for Flexair™ Ducting Hoses
300 Stainless Worm Gear Band
(Designed For Clockwise Spiral Hoses)**

| Part Number | Size (in) | Size Range (in) | Weight Each (lbs) | Standard Carton |
|-------------|-----------|-----------------|-------------------|-----------------|
| DCLPL250 | 2 1/2 | 2 3/8 - 2 3/4 | 0.086 | 200 |
| DCLPL300 | 3 | 2 7/8 - 3 3/8 | 0.093 | 200 |
| DCLPL400 | 4 | 3 1/2 - 4 1/2 | 0.130 | 200 |
| DCLPL500 | 5 | 4 3/8 - 5 1/4 | 0.143 | 200 |
| DCLPL600 | 6 | 5 1/4 - 6 1/4 | 0.167 | 200 |
| DCLPL700 | 7 | 6 1/4 - 7 1/4 | 0.175 | 200 |
| DCLPL800 | 8 | 7 3/8 - 8 3/8 | 0.207 | 100 |
| DCLPL1000 | 10 | 9 1/4 - 10 1/4 | 0.242 | 100 |
| DCLPL1200 | 12 | 11 1/4 - 12 1/4 | 0.284 | 100 |

| Part Number | Size (in) | Size Range (in) | Weight Each (lbs) | Standard Carton |
|-------------|-----------|-----------------|-------------------|-----------------|
| DCLPR250 | 2 1/2 | 2 3/8 - 2 3/4 | 0.086 | 200 |
| DCLPR300 | 3 | 2 7/8 - 3 3/8 | 0.093 | 200 |
| DCLPR400 | 4 | 3 1/2 - 4 1/2 | 0.130 | 200 |
| DCLPR500 | 5 | 3 1/2 - 4 1/2 | 0.143 | 200 |
| DCLPR600 | 6 | 4 1/4 - 5 1/4 | 0.167 | 200 |
| DCLPR700 | 7 | 5 1/4 - 6 1/4 | 0.175 | 200 |
| DCLPR800 | 8 | 7 3/8 - 8 3/8 | 0.207 | 100 |
| DCLPR1000 | 10 | 9 1/4 - 10 1/4 | 0.242 | 100 |
| DCLPR1200 | 12 | 11 1/4 - 12 1/4 | 0.284 | 100 |

Because we continually examine ways to improve our products, we reserve the right to alter specifications without notice.

Hose and Fittings for the Food and Beverage Industries

Hose Clamps

Kuri-Clamp™ Standard Duty Worm Gear Clamp

Stainless Steel Band & Housing with Carbon Steel Screw



| Part Number | Size Range (in) | Pieces Per Box | Band Width (in) | Torque Rating (in/lbs) | Weight Per Box (lbs) |
|-------------|-----------------|----------------|-----------------|------------------------|----------------------|
| WGC-CS06 | 7/16 - 25/32 | 10 | 1/2 | 25-37 | 0.60 |
| WGC-CS08 | 1/2 - 29/32 | 10 | 1/2 | 25-37 | 0.60 |
| WGC-CS10 | 9/16 - 1 1/16 | 10 | 1/2 | 25-37 | 0.60 |
| WGC-CS12 | 11/16 - 1 1/4 | 10 | 1/2 | 25-37 | 0.60 |
| WGC-CS16 | 13/16 - 1 1/2 | 10 | 1/2 | 25-37 | 0.70 |
| WGC-CS20 | 13/16 - 1 3/4 | 10 | 1/2 | 25-37 | 0.70 |
| WGC-CS24 | 1 1/16 - 2 | 10 | 1/2 | 25-37 | 0.80 |
| WGC-CS28 | 1 5/16 - 2 1/4 | 10 | 1/2 | 25-37 | 0.80 |
| WGC-CS32 | 1 9/16 - 2 1/2 | 10 | 1/2 | 25-37 | 0.80 |
| WGC-CS36 | 1 13/16 - 2 3/4 | 10 | 1/2 | 25-37 | 0.90 |
| WGC-CS40 | 2 1/16 - 3 | 10 | 1/2 | 25-37 | 0.90 |
| WGC-CS44 | 2 5/16 - 3 1/4 | 10 | 1/2 | 25-37 | 0.90 |
| WGC-CS48 | 2 9/16 - 3 1/2 | 10 | 1/2 | 25-37 | 1.00 |
| WGC-CS52 | 2 13/16 - 3 3/4 | 10 | 1/2 | 25-37 | 1.10 |
| WGC-CS56 | 3 1/16 - 4 | 10 | 1/2 | 25-37 | 1.10 |
| WGC-CS60 | 3 5/16 - 4 1/4 | 10 | 1/2 | 25-37 | 1.20 |
| WGC-CS64 | 3 9/16 - 4 1/2 | 10 | 1/2 | 25-37 | 1.20 |
| WGC-CS72 | 1 7/8 - 5 | 10 | 1/2 | 25-37 | 1.30 |
| WGC-CS80 | 2 1/2 - 5 1/2 | 10 | 1/2 | 25-37 | 1.40 |
| WGC-CS88 | 3 1/8 - 6 | 10 | 1/2 | 25-37 | 1.40 |
| WGC-CS96 | 3 5/8 - 6 1/2 | 10 | 1/2 | 25-37 | 1.50 |
| WGC-CS104 | 4 1/8 - 7 | 10 | 1/2 | 25-37 | 1.50 |

* CLAMPS ONLY SOLD IN BOX QUANTITIES

Kuri-Clamp™ Standard Duty Worm Gear Clamp

Stainless Steel Band, Housing, & Screw



| Part Number | Size Range (in) | Pieces Per Box | Band Width (in) | Torque Rating (in/lbs) | Weight Per Box (lbs) |
|-------------|-----------------|----------------|-----------------|------------------------|----------------------|
| WGC-SS06 | 7/16 - 25/32 | 10 | 1/2 | 30-45 | 0.60 |
| WGC-SS08 | 1/2 - 29/32 | 10 | 1/2 | 30-45 | 0.60 |
| WGC-SS10 | 9/16 - 1 1/16 | 10 | 1/2 | 30-45 | 0.60 |
| WGC-SS12 | 11/16 - 1 1/4 | 10 | 1/2 | 30-45 | 0.60 |
| WGC-SS16 | 13/16 - 1 1/2 | 10 | 1/2 | 30-45 | 0.70 |
| WGC-SS20 | 13/16 - 1 3/4 | 10 | 1/2 | 30-45 | 0.70 |
| WGC-SS24 | 1 1/16 - 2 | 10 | 1/2 | 30-45 | 0.80 |
| WGC-SS28 | 1 5/16 - 2 1/4 | 10 | 1/2 | 30-45 | 0.80 |
| WGC-SS32 | 1 9/16 - 2 1/2 | 10 | 1/2 | 30-45 | 0.80 |
| WGC-SS36 | 1 13/16 - 2 3/4 | 10 | 1/2 | 30-45 | 0.90 |
| WGC-SS40 | 2 1/16 - 3 | 10 | 1/2 | 30-45 | 0.90 |
| WGC-SS44 | 2 5/16 - 3 1/4 | 10 | 1/2 | 30-45 | 0.90 |
| WGC-SS48 | 2 9/16 - 3 1/2 | 10 | 1/2 | 30-45 | 1.00 |
| WGC-SS52 | 2 13/16 - 3 3/4 | 10 | 1/2 | 30-45 | 1.10 |
| WGC-SS56 | 3 1/16 - 4 | 10 | 1/2 | 30-45 | 1.10 |
| WGC-SS60 | 3 5/16 - 4 1/4 | 10 | 1/2 | 30-45 | 1.20 |
| WGC-SS64 | 3 9/16 - 4 1/2 | 10 | 1/2 | 30-45 | 1.20 |
| WGC-SS72 | 1 7/8 - 5 | 10 | 1/2 | 30-45 | 1.30 |
| WGC-SS80 | 2 1/2 - 5 1/2 | 10 | 1/2 | 30-45 | 1.40 |
| WGC-SS88 | 3 1/8 - 6 | 10 | 1/2 | 30-45 | 1.40 |
| WGC-SS96 | 3 5/8 - 6 1/2 | 10 | 1/2 | 30-45 | 1.50 |
| WGC-SS104 | 4 1/8 - 7 | 10 | 1/2 | 30-45 | 1.50 |

* CLAMPS ONLY SOLD IN BOX QUANTITIES

Kuri-Clamp™ Mini Worm Gear Clamp

Stainless Steel Band & Housing with Carbon Steel Screw



| Part Number | Size Range (in) | Pieces Per Box | Band Width (in) | Torque Rating (in/lbs) | Weight Per Box (lbs) |
|-------------|-----------------|----------------|-----------------|------------------------|----------------------|
| WGC-MCS04 | 7/32 - 5/8 | 10 | 5/16 | 10-15 | 0.20 |
| WGC-MCS06 | 7/16 - 25/32 | 10 | 5/16 | 10-15 | 0.20 |
| WGC-MCS08 | 1/2 - 29/32 | 10 | 5/16 | 10-15 | 0.20 |
| WGC-MCS10 | 9/16 - 1 1/16 | 10 | 5/16 | 10-15 | 0.20 |
| WGC-MCS12 | 11/16 - 1 1/4 | 10 | 5/16 | 10-15 | 0.30 |

* CLAMPS ONLY SOLD IN BOX QUANTITIES

Kuri-Clamp™ Mini Worm Gear Clamp

Stainless Steel Band, Housing, & Screw



| Part Number | Size Range (in) | Pieces Per Box | Band Width (in) | Torque Rating (in/lbs) | Weight Per Box (lbs) |
|-------------|-----------------|----------------|-----------------|------------------------|----------------------|
| WGC-MSS04 | 7/32 - 5/8 | 10 | 5/16 | 10-15 | 0.20 |
| WGC-MSS06 | 7/16 - 25/32 | 10 | 5/16 | 10-15 | 0.20 |
| WGC-MSS08 | 1/2 - 29/32 | 10 | 5/16 | 10-15 | 0.20 |
| WGC-MSS10 | 9/16 - 1 1/16 | 10 | 5/16 | 10-15 | 0.20 |
| WGC-MSS12 | 11/16 - 1 1/4 | 10 | 5/16 | 10-15 | 0.30 |

* CLAMPS ONLY SOLD IN BOX QUANTITIES

Because we continually examine ways to improve our products, we reserve the right to alter specifications without notice.

Hose and Fittings for the Food and Beverage Industries

Hose Clamps



Galvanized Carbon Steel Center Punch Clamp

| Part Number | Size (in) | Pieces Per Box | Band Width (in) | Weight Per Box (lbs) | Standard Box |
|-------------|-----------|----------------|-----------------|----------------------|--------------|
| CPCS03 | 13/16 | 100 | 3/8 | 3.60 | 1 |
| CPCS31 | 1 3/8 | 100 | 3/8 | 4.60 | 1 |
| CPCS04 | 1 | 100 | 5/8 | 8.30 | 1 |
| CPCS05 | 1 1/4 | 100 | 5/8 | 8.70 | 1 |
| CPCS06 | 1 1/2 | 100 | 5/8 | 9.70 | 1 |
| CPCS07 | 1 3/4 | 100 | 5/8 | 10.60 | 1 |
| CPCS08 | 2 | 100 | 5/8 | 11.50 | 1 |
| CPCS09 | 2 1/4 | 100 | 5/8 | 12.60 | 1 |
| CPCS10 | 2 1/2 | 50 | 5/8 | 6.80 | 1 |
| CPCS11 | 2 3/4 | 50 | 5/8 | 7.30 | 1 |
| CPCS12 | 3 | 50 | 5/8 | 7.70 | 1 |
| CPCS14 | 3 1/2 | 50 | 5/8 | 8.70 | 1 |
| CPCS16 | 4 | 25 | 5/8 | 4.90 | 1 |
| CPCS18 | 4 1/2 | 25 | 5/8 | 5.50 | 1 |
| CPCS20 | 5 | 25 | 5/8 | 5.90 | 1 |
| CPCS24 | 6 | 25 | 5/8 | 6.80 | 1 |
| CPCS26 | 6 1/2 | 25 | 5/8 | 7.10 | 1 |
| CPCS28 | 7 | 25 | 5/8 | 7.40 | 1 |
| CPCS32 | 8 | 25 | 5/8 | 8.20 | 1 |

*CLAMPS ARE SOLD IN BOX QUANTITIES ONLY.

201 Stainless Steel Center Punch Clamp

| Part Number | Size (in) | Pieces Per Box | Band Width (in) | Weight Per Box (lbs) | Standard Box |
|-------------|-----------|----------------|-----------------|----------------------|--------------|
| CPSS03 | 13/16 | 100 | 3/8 | 3.60 | 1 |
| CPSS31 | 1 3/8 | 100 | 3/8 | 4.60 | 1 |
| CPSS04 | 1 | 100 | 5/8 | 8.30 | 1 |
| CPSS05 | 1 1/4 | 100 | 5/8 | 8.70 | 1 |
| CPSS06 | 1 1/2 | 100 | 5/8 | 9.70 | 1 |
| CPSS07 | 1 3/4 | 100 | 5/8 | 10.60 | 1 |
| CPSS08 | 2 | 100 | 5/8 | 11.50 | 1 |
| CPSS09 | 2 1/4 | 100 | 5/8 | 12.60 | 1 |
| CPSS10 | 2 1/2 | 50 | 5/8 | 6.80 | 1 |
| CPSS11 | 2 3/4 | 50 | 5/8 | 7.30 | 1 |
| CPSS12 | 3 | 50 | 5/8 | 7.70 | 1 |
| CPSS14 | 3 1/2 | 50 | 5/8 | 8.70 | 1 |
| CPSS16 | 4 | 25 | 5/8 | 4.90 | 1 |
| CPSS18 | 4 1/2 | 25 | 5/8 | 5.50 | 1 |
| CPSS20 | 5 | 25 | 5/8 | 5.90 | 1 |
| CPSS24 | 6 | 25 | 5/8 | 6.80 | 1 |
| CPSS26 | 6 1/2 | 25 | 5/8 | 7.10 | 1 |
| CPSS28 | 7 | 25 | 5/8 | 7.40 | 1 |
| CPSS32 | 8 | 25 | 5/8 | 8.20 | 1 |

*CLAMPS ARE SOLD IN BOX QUANTITIES ONLY.

Because we continually examine ways to improve our products, we reserve the right to alter specifications without notice.

Hose and Fittings for the Food and Beverage Industries

Sheet Rubber

General Properties of Nitrile[†]

- Excellent resistance to petroleum-based fluids.
- Good physical properties.

[†] Properties shown based on Rubber Manufacturers Association Sheet Rubber Handbook, second edition.



SPECIFICATIONS:

Food grade white nitrile sheet, made from FDA-approved materials (Title 21 Food and Drug S 177.26000)

Style W60: 60 Duro hardness (Shore Durometer A)

Common Name: Nitrile, Buna-N

Polymer: Nitrile-Butadiene

ISO/ASTM Designation: NBR

| Style | ASTM Specification (SI units) | Temp. Range | Durometer | Tensile Strength (psi) | Elongation (%) | Finish |
|-------|-------------------------------|-----------------|-----------|------------------------|----------------|--------|
| W60 | D 2000 M1BG 610 | -31°F to +230°F | 55 – 65 | 1450 | 300% | Plate |

ORDERING INFORMATION:

| Part Number | Gauge x Width (in) | Avg. Length (Linear Ft/Roll) | Approx. Lbs/Roll |
|--------------|--------------------|------------------------------|------------------|
| W60-02x36x50 | 1/16 x 36 | 50 | 69 |
| W60-02x36x67 | 1/16 x 36 | 67 | 92 |
| W60-03x36x67 | 3/32 x 36 | 67 | 137 |
| W60-04x36x36 | 1/8 x 36 | 36 | 98 |
| W60-04x36x50 | 1/8 x 36 | 50 | 136 |
| W60-06x36x18 | 3/16 x 36 | 18 | 74 |
| W60-06x36x50 | 3/16 x 36 | 50 | 205 |
| W60-08x36x18 | 1/4 x 36 | 18 | 98 |
| W60-08x36x50 | 1/4 x 36 | 50 | 272 |
| W60-02x48x36 | 1/16 x 48 | 36 | 66 |
| W60-02x48x50 | 1/16 x 48 | 50 | 92 |
| W60-04x48x36 | 1/8 x 48 | 36 | 131 |
| W60-04x48x50 | 1/8 x 48 | 50 | 182 |
| W60-06x48x18 | 3/16 x 48 | 18 | 98 |
| W60-06x48x50 | 3/16 x 48 | 50 | 270 |
| W60-08x48x18 | 1/4 x 48 | 18 | 131 |
| W60-08x48x50 | 1/4 x 48 | 50 | 363 |

Because we continually examine ways to improve our products, we reserve the right to alter specifications without notice.

Hose and Fittings for the Food and Beverage Industries

Sheet Rubber

FDA SILICONE SHEET

General Properties of Silicone†

- Very good resistance to ozone, UV light and aging.
- Good physical properties.

† Properties shown based on Rubber Manufacturers Association Sheet Rubber Handbook, second edition.

SPECIFICATIONS:

Food grade red silicone sheet: In compliance with FDA 21 CFR Part 177

Style SILFG: 60 Duro hardness (Shore Durometer A)

Common Name: Silicone

Polymer: Polydimethylsiloxane

ISO/ASTM Designation: FE

| Style | ASTM Specification (SI units) | Temp. Range | Durometer | Tensile Strength (psi) | Elongation (%) | Finish |
|-------|--|-----------------|-----------|------------------------|----------------|--------|
| SILFG | D 2000 M4FC608 B37 E016 G11 EC 1935/2004 | -76°F to +446°F | 55 – 65 | 1450 | 500% | Plate |

ORDERING INFORMATION:

| Part Number | Gauge x Width (in) | Avg. Length (Linear Ft/Roll) | Approx. Lbs/Roll |
|----------------|--------------------|------------------------------|------------------|
| SILFG-01x36x35 | 1/32 x 36 | 35 | 22 |
| SILFG-02x36x35 | 1/16 x 36 | 35 | 44 |
| SILFG-03x36x35 | 3/32 x 36 | 35 | 67 |
| SILFG-04x36x35 | 1/8 x 36 | 35 | 89 |
| SILFG-06x36x35 | 3/16 x 36 | 35 | 133 |
| SILFG-08x36x35 | 1/4 x 36 | 35 | 178 |
| SILFG-01x48x35 | 1/32 x 48 | 35 | 30 |
| SILFG-02x48x35 | 1/16 x 48 | 35 | 59 |
| SILFG-03x48x35 | 3/32 x 48 | 35 | 89 |
| SILFG-04x48x35 | 1/8 x 48 | 35 | 118 |
| SILFG-06x48x35 | 3/16 x 48 | 35 | 178 |
| SILFG-08x48x35 | 1/4 x 48 | 35 | 237 |

Because we continually examine ways to improve our products, we reserve the right to alter specifications without notice.

Cautionary Statement

All Products sold and distributed by Kuriyama of America, Inc. are in the nature of commodities and they are sold by published specifications and not for particular purposes, uses or applications. Purchaser shall first determine their suitability for the intended purposes, uses or applications and shall either conduct its own engineering studies or tests, or retain qualified engineers, consultants or testing laboratories and consult with them before determining the proper use, suitability or propriety of the merchandise or Products for the intended purposes, uses or applications.

Kuriyama of America, Inc. ("Seller") does not recommend the Products for any particular purpose, use or application, and the Purchaser or user thereof shall assume full responsibility for the suitability, propriety, use and application of the Products. Purchaser shall follow all instructions contained in Seller's catalogs, brochures, technical bulletins and other documents regarding the Products. The Products, including but not limited to, hose, tubing or couplings, may fail due to the use or conveyance of substances at elevated or lowered temperatures or at excessive pressure, the conveyance of abrasive, injurious, flammable, explosive or damaging substances.

Hose or tubing used in bent configurations will be subjected to increased abrasion. Hose clamps or couplings may loosen after initial installation and all sections of hose and tubing including connections, couplings, clamps, conductivity and bonding should be inspected frequently, regularly and consistently, and should be replaced, adjusted or re-tightened for the avoidance of leakage, for the prevention of injuries or damages, and for general safety purposes. Except as indicated in its Limited Warranty, Seller shall not be liable or responsible for direct or indirect injuries or damages caused by or attributed to the failure or malfunction of any Products sold or distributed by it.

Purchasers or users of the Products should frequently and consistently undertake inspections and protective measures with respect to the use and application of Products, which should include the examination of tube and cover, conditions of the hose or tubing, and the identification, repair or replacement of sections showing cracking, blistering, separations, internal and external abrasions, leaking or slipped couplings or connections and make proper proof tests.

Limited Warranty

The Products sold or distributed by Seller are warranted to its customers to be free from defects in material and workmanship at the time of shipment by us, subject to the following provisions. ALL WARRANTY CLAIMS SHALL BE MADE WITHIN SIX (6) MONTHS AFTER SELLER SHIPPED THE PRODUCTS. SELLER'S LIABILITY HEREUNDER IS LIMITED AT SELLER'S EXCLUSIVE DISCRETION, TO 1) THE PURCHASE PRICE OF ANY PRODUCTS PROVING DEFECTIVE; 2) REPAIR OF ANY DEFECTIVE PRODUCT OR PART THEREOF; OR 3) REPLACEMENT OF ANY DEFECTIVE PRODUCT OR PART UPON ITS AUTHORIZED RETURN TO SELLER.

THIS WARRANTY IS IN LIEU OF AND EXCLUDES ALL OTHER WARRANTIES, EXPRESSED, IMPLIED, STATUTORY, OR OTHERWISE CREATED UNDER APPLICABLE LAW INCLUDING, BUT NOT LIMITED TO, THE WARRANTY OF MERCHANTABILITY AND THE WARRANTY OF FITNESS FOR A PARTICULAR PURPOSE. IN NO EVENT SHALL SELLER OR THE MANUFACTURER OF THE PRODUCT BE LIABLE FOR SPECIAL, INCIDENTAL, OR CONSEQUENTIAL DAMAGES, INCLUDING LOSS OF PROFITS, WHETHER OR NOT CAUSED BY OR RESULTING FROM THE NEGLIGENCE OF SELLER AND/OR THE MANUFACTURER OF THE PRODUCT, UNLESS SPECIFICALLY PROVIDED HEREIN. IN ADDITION, THIS WARRANTY SHALL NOT APPLY TO ANY PRODUCTS OR PORTIONS THEREOF WHICH HAVE BEEN SUBJECT TO ABUSE, MISUSE, IMPROPER INSTALLATION, MAINTENANCE, OR OPERATION, ELECTRICAL FAILURE OR ABNORMAL CONDITIONS, AND TO PRODUCTS WHICH HAVE BEEN TAMPERED WITH, ALTERED, MODIFIED, REPAIRED, REWORKED BY ANYONE NOT APPROVED BY SELLER, OR USED IN ANY MANNER INCONSISTENT WITH THE PROVISIONS OF THE "CAUTIONARY STATEMENT" ABOVE OR ANY INSTRUCTIONS OR SPECIFICATIONS PROVIDED WITH OR FOR THE PRODUCT. 05/03/21 REV

Distributed by:



KURIYAMA
OF AMERICA, INC.

Since 1968

HEADQUARTERS, SALES OFFICE AND WAREHOUSE

360 E. State Parkway, Schaumburg, IL 60173-5335
Phone: (847) 755-0360 • Toll-free Fax: (800) 800-0320
International Fax: (847) 885-0996



kuriyama.com



sales@kuriyama.com



The trademarks contained in this publication are trademarks of Kuriyama of America, Inc.

The "Alfagomma" trademark contained in this publication is a registered trademark of Alfagomma S.p.A.

CONTACT OUR SALES/WAREHOUSE LOCATIONS BELOW WHICH SERVE YOUR AREA

SOUTHWEST WAREHOUSE

KURIYAMA OF AMERICA, INC.

– HOUSTON

200 Portwall Street, Suite 100
HOUSTON, TX 77029

Phone: (713) 674-8212

Toll Free Phone: (800) 501-6808

FAX: (713) 674-5214

Toll Free FAX: (800) 800-5214

E-Mail: sales@kuriyama.com

WESTERN WAREHOUSE

KURIYAMA OF AMERICA, INC.

– SANTA FE SPRINGS

10749 SHOEMAKER AVENUE

SANTA FE SPRINGS, CA 90670-4039

Phone: (562) 941-4507

FAX: (562) 941-8940

Toll-Free FAX: (800) 326-8940

E-Mail: sales@kuriyama.com

SOUTHEAST WAREHOUSE

FORTNEY SALES CO., INC.

4221 Cantrell Road NW

Acworth, GA 30101

Phone: (770) 427-6528

FAX: (770) 423-9249

Toll Free FAX: (800) 423-9249

Web Site: www.fortneysales.com

E-Mail: sales@fortneysales.com

EASTERN WAREHOUSE

EASTERN RUBBER & PLASTICS CO., INC.

100 GOLDMAN DR.

PLUMSTED INDUSTRIAL PARK

CREAM RIDGE, NJ 08514

Phone: (609) 758-0100

FAX: (609) 758-0102

Toll Free FAX: (800) 445-7138

Web Site: www.easternrubber.com

E-Mail: sales@easternrubber.com

IN MEXICO:

KURIYAMA DE MÉXICO S DE RL DE CV

AV JOSE PALOMO MARTINEZ NO 520-20 BODEGA 5

PARQUE INDUSTRIAL OMOLAP

APODACA, N.L. CP:66633, MÉXICO

Telefonos: (81) 1086-1870 0 71

Lada sin Costo 01 800 822 52 00

FAX: (81) 1086-1869

Internet: www.kuriyama.com

Correo Electronico: ventas@kuriyama.com