

# AGRICULTURAL HOSE AND COUPLINGS

CROP FARMING  
DAIRIES  
FISH FARMS  
LIVESTOCK FARMS  
ORCHARDS  
POULTRY FARMS  
WINERIES

FEATURING!  
AGRICULTURAL HOSE  
SELECTION GUIDE!

*Page 52*



**KURIYAMA**  
OF AMERICA, INC.

Visit us  
[www.kuriyama.com](http://www.kuriyama.com)  
on the Web!



EDITION 0119

# AGRICULTURAL HOSE AND COUPLINGS

## Table of Contents

### Agricultural Solution Spraying

|   |   |
|---|---|
| Kuri Tec® EVA Yarn Reinforced Spray Hose.....   | 7 |
| Kuri Tec® PVC Reinforced Spray Hose .....       | 7 |
| Redi-GP™ General Purpose Air & Water Hose ..... | 7 |

### Agricultural Solution & Tree Spraying

|                       |   |
|-----------------------|---|
| Kuri Tec® A1661 ..... | 6 |
| Kuri Tec® A1687 ..... | 6 |
| Kuri Tec® A4083 ..... | 6 |
| Kuri Tec® A4086 ..... | 6 |

### Air Tool Hose Assemblies

|  |   |
|--|---|
| Kuri Tec® Polyair® Multi-Purpose PVC Air Tool Hose Assemblies .....      | 8 |
| Kuri Tec® Tundra-Air® Low Temperature PVC Air Tool Hose Assemblies ..... | 8 |
| Kuri Tec® Utility Grade PVC Air Tool Hose Assemblies.....                | 8 |

### Combination Hose Nipples

|  |    |
|--|----|
| Hose Nipple (304 Stainless) NPT Threads.....           | 33 |
| Hose Nipple (316 Stainless) NPT Threads .....          | 33 |
| Hose Nipple (Glass Reinforced Nylon) NPT Threads ..... | 33 |
| Hose Nipple (Hex Plain Steel) NPT Threads.....         | 32 |
| Hose Nipple (Hex Zinc Plated Steel) NPT Threads .....  | 32 |
| Hose Nipple (Plain Steel) NPT Threads .....            | 32 |
| Hose Nipple (Polypropylene) NPT Threads .....          | 33 |
| Hose Nipple (Zinc Plated Steel) NPT Threads.....       | 32 |
| Hose Nipple (Zinc Plated Steel) Grooved End .....      | 32 |

### Couplings

|  |    |
|--|----|
| Part A Male Adapter x Female NPT.....    | 26 |
| Part B Female Coupler x Male NPT.....    | 26 |
| Part C Female Coupler x Hose Shank ..... | 26 |
| Part D Female Coupler x Female NPT ..... | 27 |
| Part E Male Adapter x Hose Shank .....   | 27 |
| Part F Male Adapter x Male NPT.....      | 27 |

### Couplings & Valves

|   |    |
|---|----|
| Part DC Dust Cap .....                      | 28 |
| Part DP Dust Plug.....                      | 28 |
| Polypropylene Ball Valve 4-Bolt Design..... | 28 |
| Polypropylene Ball Valve 6-Bolt Design..... | 28 |

### EZ-Seal™ Leak Resistant Couplings

|  |    |
|--|----|
| Aluminum Part C Female Coupler x Hose Shank.....                                 | 29 |
| Aluminum Part E Male Adapter x Hose Shank.....                                   | 29 |
| Aluminum Pin Lug Hose Shank Male End (NPSM Threads) 29                           |    |
| Aluminum Pin Lug Hose Shank with Brass Swivel Nut Female End (NPSM Threads)..... | 29 |

### Ferrules

|                     |    |
|---------------------|----|
| CRF-SS Series ..... | 37 |
|---------------------|----|

### Food Grade Liquid Transfer Hoses

|  |       |
|--|-------|
| Alfagomma® Heavy Duty Suction & Discharge Food Grade Oil Resistant Hose..... | 22    |
| Kuri Tec® Clear PVC Tubing .....   | 21    |
| Kuri Tec® Clearbraid® Food & Beverage Hose.....                              | 20    |
| Tigerflex™ Food Grade Liquid Suction & Discharge Hose ...                    | 22    |
| Tigerflex™ Food Grade Liquid Suction Hose .....                              | 21-22 |

### Fuel & Oil Hoses

|   |    |
|---|----|
| Braid-Lock® 300 PSI Push-On Hose.....             | 15 |
| Farm Tank Oil Resistant NBR Hose Assemblies ..... | 15 |

### Grain and Material Handling

|  |    |
|--|----|
| Flexair™ Urevent™ Clear Heavy Duty Food Grade Polyurethane Ducting/Material Handling Hose..... | 23 |
| Hose Tec® Stainless Steel, Unlined Bulk Material Transfer Hose .....                           | 23 |
| Tigerflex™ Tiger-TR1™ Heavy Duty SBR Wet or Dry Material Handling Hose.....                    | 23 |

### Heavy Duty Water Discharge

|  |    |
|--|----|
| 150 PSI EPDM Water Discharge Hose.....               | 17 |
| Ironsides™ Heavy Duty PVC Water Discharge Hose ..... | 17 |

### Hose Clamps

|                      |    |
|----------------------|----|
| CPCS Series.....     | 36 |
| CPSS Series.....     | 36 |
| DCLPL Series .....   | 34 |
| DCLPR Series.....    | 34 |
| SDBC Series.....     | 34 |
| SDBC-SS Series.....  | 34 |
| WGC-CS Series .....  | 35 |
| WGC-MCS Series ..... | 35 |
| WGC-MSS Series ..... | 35 |
| WGC-SS Series .....  | 35 |

**Note: Hose working pressures are application and temperature dependant**

**For additional information on these or other hose and couplings contact us at [sales@kuriyama.com](mailto:sales@kuriyama.com) or visit us at: [www.kuriyama.com](http://www.kuriyama.com)**

The trademarks contained in this publication are trademarks of Kuriyama of America, Inc.  
The "Alfagomma" trademark contained in this publication is a registered trademark of Alfagomma S.p.A.

Because we continually examine ways to improve our products, we reserve the right to alter specifications or discontinue products without prior notice.

# AGRICULTURAL HOSE AND COUPLINGS

## Table of Contents

### Hydraulic Hoses and Accessories

|  |    |
|--|----|
| ABT4K Series - Alfabiotech .....       | 38 |
| JIC Solid Male 37° Seat .....          | 45 |
| JIC Female 37° Seat .....              | 46 |
| JIC Female 37° Seat - Double Hex ..... | 46 |
| NPTF Solid Male 60° Seat .....         | 43 |
| NPTF Male Swivel 60° Seat .....        | 44 |
| NPTF Solid Female Rigid .....          | 44 |
| NPSM Female Swivel 60° Seat .....      | 44 |
| TR1MT Series - MINETUFF .....          | 39 |
| TR2MT Series - MINETUFF .....          | 40 |
| SAE Solid Male O-Ring Boss .....       | 45 |
| SAE Female 45° Deat - Doubel Hex ..... | 47 |

### Kuri Tec® Truespray™ .....

### Pin Lug Hose Shank Couplings

|   |    |
|---|----|
| Aluminum Shank Male (NPSM Threads) .....                                  | 30 |
| Aluminum Shank Male End (NST Threads) .....                               | 30 |
| Aluminum Shank with Brass Swivel Nut Complete Set<br>(NPSM Threads) ..... | 30 |
| Aluminum Shank with Brass Swivel Nut Complete Set<br>(NST Threads) .....  | 30 |
| Aluminum Shank with Brass Swivel Nut Female<br>(NPSM Threads) .....       | 30 |
| Aluminum Shank with Brass Swivel Nut Female<br>(NST Threads) .....        | 30 |
| Brass Shank with Brass Swivel Nut Complete Set<br>(NPSM Threads) .....    | 30 |

### Quick Release Couplings

|   |       |
|---|-------|
| QF - Flat Face Standard ISO 16028 ..... | 50-51 |
| QP - AG Poppet Standard .....           | 47-48 |
| QT - AG Ball Industry Standard .....    | 49    |

### Sanitary Fittings

|  |    |
|--|----|
| Sanitary Clamps .....                        | 24 |
| Sanitary Hex Nut (for FBS-SS Series) .....   | 24 |
| Sanitary SS316 Bevel Seat x Hose Shank ..... | 24 |
| Sanitary SS316 Tri-Clamp x Hose Shanks ..... | 24 |

### Sanitary Gaskets

|  |    |
|--|----|
| Sanitary Buna-N Tri-Clamp Gasket Black ..... | 25 |
| Sanitary Buna-N Tri-Clamp Gasket White ..... | 25 |
| Sanitary EPDM Tri-Clamp Gasket Black .....   | 25 |
| Sanitary EPDM Tri-Clamp Gasket White .....   | 25 |

### Strainers

|  |    |
|--|----|
| Bottom Hole Zinc Plated Steel Strainer (NPSM Threads) ....         | 31 |
| Long Round Hole Zinc Plated Steel Strainer<br>(NPSM Threads) ..... | 31 |
| Polypropylene Strainer (NPSM Threads) .....                        | 31 |
| Round Hole Zinc Plated Steel Strainer (NPSM Threads) .....         | 31 |
| Square Hole Zinc Plated Steel Strainer (NPSM Threads) ....         | 31 |
| Top Hole Zinc Plated Steel Strainer (NPSM Threads) .....           | 31 |

### Technical Information .....

### Tigerflex™ Solarguard™ .....

### Traveling Irrigator Supply Line & Manure Drag Hose

|   |    |
|---|----|
| Oroflex® Bandama PVC/Nitrile Rubber Irrigation Hose ..... | 19 |
| Oroflex® Drag PVC/Nitrile Rubber Irrigation Hose .....    | 19 |

### Water & Agricultural Solution Assemblies

|  |   |
|--|---|
| Tigerflex™ Green PVC Suction Hose Assemblies .....                 | 9 |
| Standard Duty PVC Water Layflat Discharge Hose<br>Assemblies ..... | 9 |

### Water & Concentrated Agricultural Solution

|  |    |
|--|----|
| Alfagomma® 240 PSI Acid & Chemical Suction &<br>Discharge Hose ..... | 14 |
| Alfagomma® Heavy Duty Suction & Discharge Hose .....                 | 14 |

### Water & Liquid Manure Supply Lines

|   |    |
|---|----|
| Oroflex® 10 PVC/Nitrile Rubber Discharge Hose .....                 | 18 |
| Oroflex® 20 Black PVC/Nitrile Rubber Air & Discharge Hose           | 18 |
| Oroflex® 20 Yellow PVC/Nitrile Rubber Air &<br>Discharge Hose ..... | 18 |

### Water Discharge & Drip Irrigation

|  |    |
|--|----|
| Vinylflow® PVC Irrigation & Water Discharge Hose ..... | 16 |
|--|----|

### Water Suction and Discharge Hose

|   |    |
|---|----|
| Tigerflex™ Solarguard™ WST-SLR Series ..... | 13 |
| Tigerflex™ Suction & Discharge Hose .....   | 13 |

### Water Transfer & Agricultural Solution/Liquid Manure Spraying

|   |    |
|---|----|
| Tigerflex™ Tiger™ Green EPDM Suction Hose .....                 | 12 |
| Tigerflex™ Tiger™ - SD EPDM Suction and Discharge<br>Hose ..... | 12 |
| Tigerflex™ Tiger™ Yellow EPDM Suction Hose .....                | 12 |

### Water Transfer & Agricultural Solution Spraying

|   |    |
|---|----|
| Tigerflex™ Clear & Green PVC Suction Hose .....   | 10 |
| Tigerflex™ Clear & White PVC Suction Hose .....   | 10 |
| Tigerflex™ Green PVC Suction Hose .....           | 10 |
| Tigerflex™ Low Temperature PVC Suction Hose ..... | 11 |
| Tigerflex™ Solarguard™ SG Series .....            | 11 |
| Tigerflex™ Solarguard™ SLR Series .....           | 11 |

Because we continually examine ways to improve our products, we reserve the right to alter specifications or discontinue products without prior notice.



## SOLARGUARD™ Prevent UV Hose Damage!

Hoses used outdoors for prolonged periods of time are subject to damage resulting from exposure to UV light. Tigerflex™ Solarguard™ water and agricultural chemical transfer hoses are specially formulated with a unique blend of UV stabilizers, resulting in hoses that maintain their strength and flexibility up to twice as long as standard PVC hoses, resulting in lower overall service costs.



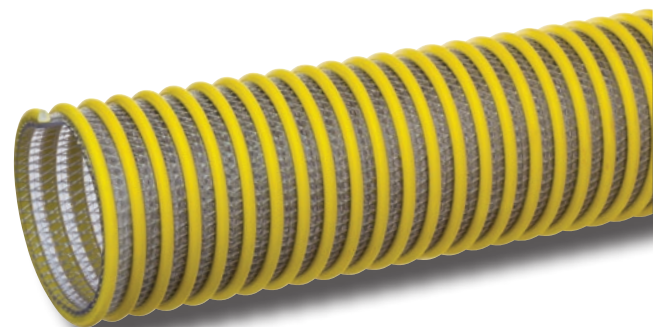
PVC Hose cracking due to UV exposure



**SLR™ Series**

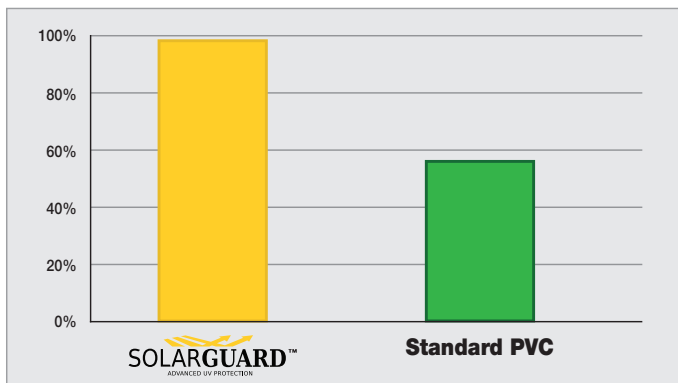


**SG™ Series**



**WST-SLR™ Series**

### Tensile Strength Retention



Percentage of tensile strength remaining after 720 hours of accelerated UV light exposure per ASTM G154

Because we continually examine ways to improve our products, we reserve the right to alter specifications or discontinue products without prior notice.

# INNOVATIONS!

# AGRICULTURAL HOSE AND COUPLINGS



## TRUESPRAY™

### Prevent Unwanted Herbicide Carryover Damage!

Kuri Tec® Truespray™ hoses have been shown to reduce unwanted herbicide carryover crop damage from PGR (plant growth-regulating) herbicides such as Dicamba. PGR herbicides, although water soluble, act as weak acids, and their removal requires more time, care and effort (Steckel et al. 2005). In conjunction with proper hose and sprayer cleaning techniques, the Truespray™ hose's permeation resistant liner greatly reduces the amount of PGR herbicide residue buildup compared to other hoses.

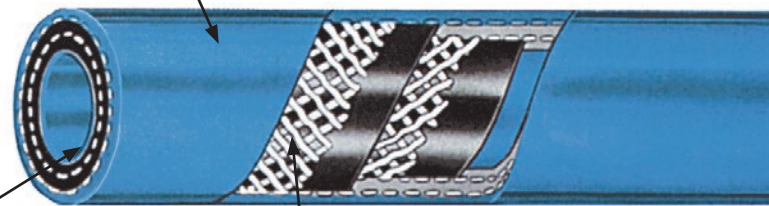
Even after repeated flushing other spray hoses can retain significant amounts of herbicide residue buildup long after use. During re-use this buildup can unexpectedly leach out, causing costly crop damage and subsequent yield loss – even years later! However, Kuri Tec® Truespray™ hoses feature permeation resistant inner liners with superior cleanout characteristics, helping ensure your herbicides and pesticides wind up where you want them, on the field.

Scientific studies have shown over a 50% reduction in yield loss associated with herbicide carryover damage compared to other hoses that were studied (Cundiff et al. 2017)\*.



*Discoloration and cupping of leaves are signs of herbicide damage.*

*Pin-pricked cover vents trapped gasses to help prevent ballooning*



*Highly flushable, permeation resistant inner liner reduces residue buildup*

*Dual yarn reinforcement for strength & durability*

\*All performance data was gathered in a controlled environment. Results will vary and may not be representative of the experience of others. Use of the Truespray™ hose is not a replacement for proper cleaning procedures. Please refer to your sprayer manual for proper cleaning procedures.

Steckel L, Chism C, Thompson A (2005) Cleaning Plant Growth Regulator (PGR) Herbicides Out of Field Sprayers. University of Tennessee Agricultural Extension Service W071. 3 p  
Cundiff, G., Reynolds, D., & Mueller, T. (2017). Evaluation of Dicamba Persistence among Various Agricultural Hose Types and Cleanout Procedures Using Soybean (Glycine max) as a Bio-Indicator. Weed Science, 65(2), 305-316. doi:10.1017/wsc.2016.29

Because we continually examine ways to improve our products, we reserve the right to alter specifications or discontinue products without prior notice.

# AGRICULTURAL HOSE AND COUPLINGS

## Agricultural Solution & Tree Spraying

### Kuri Tec® Polyethylene/Rubber Blend High Pressure Reinforced Spray Hose

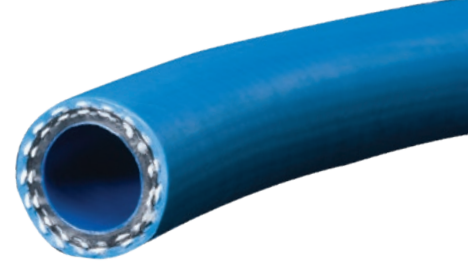
**Construction:** LLDPE/rubber blend tube, two-pass high tensile strength yarn and rubber blend cover.

**Temperature Range:** -40°F (-40°C) to +130°F (+54°C)

**Typical Application:** Transfer of water based/PGR agricultural chemicals

| Part Number      | Hose Inner Diameter (in) | Length (ft) | Working Pressure (psi) at 68°F | Weight (lbs/ft) |
|------------------|--------------------------|-------------|--------------------------------|-----------------|
| A4086-06X300/100 | 3/8                      | 300/100     | 800                            | 0.11            |
| A4086-08X300/100 | 1/2                      | 300/100     | 800                            | 0.15            |
| A4086-12X300/100 | 3/4                      | 300/100     | 800                            | 0.24            |
| A4086-16X200/100 | 1                        | 200/100     | 400                            | 0.33            |

**TRUESPRAY™**



### Kuri Tec® Polyethylene/Rubber Blend High Pressure Reinforced Spray Hose

**Construction:** LLDPE/rubber blend tube, two-pass high tensile strength yarn and rubber blend cover.

**Temperature Range:** -40°F (-40°C) to +130°F (+54°C)

**Typical Application:** Transfer of water based/PGR agricultural chemicals

| Part Number      | Hose Inner Diameter (in) | Length (ft) | Working Pressure (psi) at 68°F | Weight (lbs/ft) |
|------------------|--------------------------|-------------|--------------------------------|-----------------|
| A4083-06X300/100 | 3/8                      | 300/100     | 800                            | 0.11            |
| A4083-08X300/100 | 1/2                      | 300/100     | 800                            | 0.15            |
| A4083-12X300/100 | 3/4                      | 300/100     | 800                            | 0.24            |
| A4083-16X200/100 | 1                        | 200/100     | 400                            | 0.33            |

**TRUESPRAY™**



### Kuri Tec® PVC/Polyurethane Blend High Pressure Reinforced Spray Hose

**Construction:** PVC/polyurethane blend tube, two-pass high tensile strength yarn and PVC cover.

**Temperature Range:** +15°F (-10°C) to +160°F (+70°C)

**Typical Application:** Transfer of dilute oil based agricultural chemicals

| Part Number  | Hose Inner Diameter (in) | Length (ft) | Working Pressure (psi) at 68°F | Weight (lbs/ft) |
|--------------|--------------------------|-------------|--------------------------------|-----------------|
| A1687-06X300 | 3/8                      | 300         | 800                            | 0.14            |
| A1687-08X300 | 1/2                      | 300         | 800                            | 0.23            |
| A1687X10X300 | 5/8                      | 300         | 800                            | 0.32            |
| A1687X12X300 | 3/4                      | 300         | 800                            | 0.42            |



### Kuri Tec® PVC/Polyurethane Blend Reinforced Spray Hose

**Construction:** PVC/polyurethane blend tube, two-pass high tensile strength yarn and PVC cover.

**Temperature Range:** +15°F (-10°C) to +160°F (+70°C)

**Typical Application:** Transfer of dilute oil based agricultural chemicals

| Part Number  | Hose Inner Diameter (in) | Length (ft) | Working Pressure (psi) at 68°F | Weight (lbs/ft) |
|--------------|--------------------------|-------------|--------------------------------|-----------------|
| A1661-06X300 | 3/8                      | 300         | 600                            | 0.14            |
| A1661-08X300 | 1/2                      | 300         | 600                            | 0.19            |
| A1661-10X300 | 5/8                      | 300         | 600                            | 0.32            |
| A1661-12X300 | 3/4                      | 300         | 600                            | 0.42            |



Because we continually examine ways to improve our products, we reserve the right to alter specifications or discontinue products without prior notice.

# AGRICULTURAL HOSE AND COUPLINGS

## Agricultural Solution Spraying

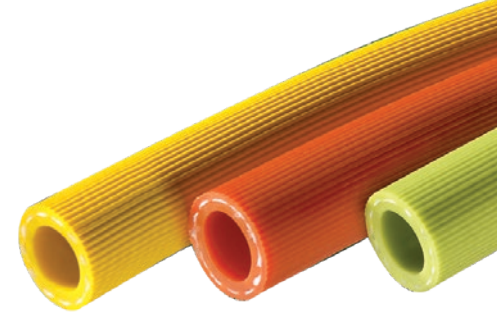
### Kuri Tec® PVC Reinforced Spray Hose

**Construction:** PVC tube and cover with high tensile strength yarn.

**Temperature Range:** +25°F (-5°C) to +150°F (+65°C)

**Typical Application:** Agricultural spray applications, vineyard spraying

| Standard Series Stock Colors |              |                  | Size Code | Hose Inner Diameter (in) | Length (ft) | Working Pressure (psi) at 68°F | Weight (lbs/ft) |
|------------------------------|--------------|------------------|-----------|--------------------------|-------------|--------------------------------|-----------------|
| K4131 Yellow                 | K4132 Orange | K4137 Mint Green |           |                          |             |                                |                 |
| ✓                            | ✓            | ✓                | 06        | 3/8                      | 300         | 600                            | 0.12            |
| ✓                            | ✓            | ✓                | 08        | 1/2                      | 300         | 600                            | 0.18            |



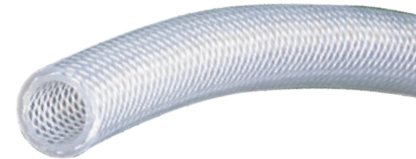
### Kuri Tec® EVA Yarn Reinforced Spray Hose

**Construction:** EVA tube and cover with high tensile strength yarn.

**Temperature Range:** -30°F (-35°C) to +150°F (+65°C)

**Typical Application:** Agricultural spray applications, including anhydrous ammonia fertilizer (low pressure only)

| Part Number  | Hose Inner Diameter (in) | Length (ft) | Working Pressure (psi) at 68°F | Weight (lbs/ft) |
|--------------|--------------------------|-------------|--------------------------------|-----------------|
| K4350-06X300 | 3/8                      | 300         | 300                            | 0.07            |
| K4350-08X300 | 1/2                      | 300         | 250                            | 0.09            |
| K4350-12X300 | 3/4                      | 300         | 150                            | 0.12            |
| K4350-16X200 | 1                        | 200         | 150                            | 0.24            |



### Redi-GP™ General Purpose Air & Water Hose

**Construction:** EPDM tube and cover with high tensile strength yarn

**Temperature Range:** -40°F (-40°C) to +200°F (+93°C)

**Typical Application:** Agricultural spray applications

| Part Number  | Color | Hose Inner Diameter (in) | Length (ft) | Working Pressure (psi) at 68°F | Weight (lbs/ft) |
|--------------|-------|--------------------------|-------------|--------------------------------|-----------------|
| BEGP-025X700 | Black | 1/4                      | 700         | 250                            | 0.12            |
| REGP-025X700 | Red   | 1/4                      | 700         | 250                            | 0.12            |
| BEGP-031X700 | Black | 5/16                     | 700         | 200                            | 0.11            |
| REGP-031X700 | Red   | 5/16                     | 700         | 200                            | 0.12            |
| BEGP-038X700 | Black | 3/8                      | 700         | 250                            | 0.16            |
| REGP-038X700 | Red   | 3/8                      | 700         | 250                            | 0.17            |
| BEGP-050X700 | Black | 1/2                      | 700         | 250                            | 0.24            |
| REGP-050X700 | Red   | 1/2                      | 700         | 250                            | 0.25            |
| BEGP-062X700 | Black | 5/8                      | 700         | 200                            | 0.29            |
| REGP-062X700 | Red   | 5/8                      | 700         | 200                            | 0.30            |
| BEGP-075X700 | Black | 3/4                      | 700         | 250                            | 0.36            |
| REGP-075X700 | Red   | 3/4                      | 700         | 250                            | 0.38            |
| BEGP-100X700 | Black | 1                        | 700         | 200                            | 0.49            |
| REGP-100X700 | Red   | 1                        | 700         | 200                            | 0.51            |
| BEGP-125X300 | Black | 1 1/4                    | 300         | 200                            | 0.79            |
| REGP-125X300 | Red   | 1 1/4                    | 300         | 200                            | 0.81            |
| BEGP-150X300 | Black | 1 1/2                    | 300         | 200                            | 0.90            |
| REGP-150X300 | Red   | 1 1/2                    | 300         | 200                            | 0.95            |
| REGP-200X300 | Red   | 2                        | 300         | 200                            | 1.13            |



Because we continually examine ways to improve our products, we reserve the right to alter specifications or discontinue products without prior notice.

# AGRICULTURAL HOSE AND COUPLINGS

## Air Tool Hose Assemblies

### Kuri Tec® Polyair® Multi-Purpose PVC Air Tool Hose Assemblies

**Construction:** PVC tube and cover with high tensile strength yarn.

**Temperature Range:** -40°F (-40°C) to +150°F (+65°C)

**Hose Ends:**

**1/4" ID:** 1/4" X 1/4" M. NPT, **5/16" ID:** 5/16" X 1/4" M. NPT, **3/8" ID:** 3/8" X 1/4" M. NPT, **1/2" ID:** 1/2" X 1/2" M. NPT, **3/4" ID:** 3/4" X 3/4" M. NPT, **1" ID:** 1" X 1" M. NPT

**Typical Application:** Pneumatic air tools



| Standard Series Stock Colors |            |             |             | Size Code | Hose Inner Diameter (in) | Working Pressure (psi) at 70°F | Assembled Lengths (ft) |
|------------------------------|------------|-------------|-------------|-----------|--------------------------|--------------------------------|------------------------|
| HS1131 Yellow                | HS1134 Red | HS1136 Blue | HS1138 Grey |           |                          |                                |                        |
| √                            | √          | √           | √           | 04        | 1/4                      | 300                            | 25/50/100              |
| √                            | √          | √           | √           | 06        | 3/8                      | 300                            | 25/50/100              |
| √                            | √          | √           | √           | 08        | 1/2                      | 300                            | 25/50/100              |
| √                            | √          | √           | √           | 12        | 3/4                      | 250                            | 25/50/100              |
| √                            | √          | √           | √           | 16        | 1                        | 250                            | 25/50/100              |

### Kuri Tec® Tundra-Air® Low Temperature PVC Air Tool Hose Assemblies

**Construction:** PVC tube and cover with high tensile strength yarn.

**Temperature Range:** -65°F (-54°C) to +150°F (+65°C)

**Hose Ends:**

**1/4" ID:** 1/4" X 1/4" Male NPT, **3/8" ID:** 3/8" X 1/4" Male NPT, **1/2" ID:** 1/2" X 3/8" Male NPT

**Typical Application:** Pneumatic air tools

**TUNDRA AIR™**

Flexible to  
**-65°F!**



| Standard Series Stock Colors |            |             | Size Code | Hose Inner Diameter (in) | Working Pressure (psi) at 70°F | Assembled Lengths (ft) |
|------------------------------|------------|-------------|-----------|--------------------------|--------------------------------|------------------------|
| HS1231 Yellow                | HS1234 Red | HS1236 Blue |           |                          |                                |                        |
| √                            | √          | √           | 04        | 1/4                      | 300                            | 25/50/100              |
| √                            | √          | √           | 06        | 3/8                      | 300                            | 25/50/100              |
| √                            | √          | √           | 08        | 1/2                      | 300                            | 25/50/100              |

### Kuri Tec® Utility Grade PVC Air Tool Hose Assemblies

**Construction:** PVC tube and cover with high tensile strength yarn.

**Temperature Range:** +14°F (-10°C) to +150°F (+65°C)

**Hose Ends:**

**1/4" ID:** 1/4" X 1/4" Male NPT, **3/8" ID:** 3/8" X 1/4" Male NPT

**Typical Application:** Pneumatic air tools



| Standard Series Stock Colors |            |             | Size Code | Hose Inner Diameter (in) | Working Pressure (psi) at 70°F | Assembled Lengths (ft) |
|------------------------------|------------|-------------|-----------|--------------------------|--------------------------------|------------------------|
| HS1181 Yellow                | HS1184 Red | HS1186 Blue |           |                          |                                |                        |
| √                            | √          | √           | 04        | 1/4                      | 300                            | 25/50/100              |
| √                            | √          | √           | 06        | 3/8                      | 300                            | 25/50/100              |

Because we continually examine ways to improve our products, we reserve the right to alter specifications or discontinue products without prior notice.



# AGRICULTURAL HOSE AND COUPLINGS

## Water & Agricultural Solution Assemblies

### Tigerflex™ Green PVC Suction Hose Assemblies

**Construction:** PVC tube with rigid PVC helix

**Temperature Range:** -4°F (-20°C) to +150°F (+65°C)

**Typical Application:** Transfer of water and mild agricultural chemicals

| Part Number   | Hose Inner Diameter (in) | Length (ft) | Working Pressure (psi) at 68°F | Weight (ea/lbs) | Pallet Quantity |
|---|--------------------------|-------------|--------------------------------|-----------------|-----------------|
| <b>Hose Ends:</b> Aluminum pin lug couplings male x female      |                          |             |                                |                 |                 |
| EG200APLX20-PQ  | 2                        | 20          | 65                             | 12.18           | 20              |
| EG300APLX20-PQ  | 3                        | 20          | 60                             | 22.60           | 15              |
| <b>Hose Ends:</b> Aluminum quick couplings male x female        |                          |             |                                |                 |                 |
| EG200ACEX20-PQ  | 2                        | 20          | 65                             | 12.88           | 20              |
| EG300ACEX20-PQ  | 3                        | 20          | 60                             | 23.42           | 15              |
| <b>Hose Ends:</b> Aluminum female couplings x steel NPT threads |                          |             |                                |                 |                 |
| EG200ACNX20-PQ  | 2                        | 20          | 65                             | 13.10           | 20              |
| EG300ACNX20-PQ  | 3                        | 20          | 65                             | 24.56           | 15              |

KOA Distributor note: Must be purchased in pallet quantities.



### Standard Duty PVC Water Layflat Discharge Hose Assemblies

**Construction:** Spiral homogenous PVC construction with spiral reinforcement is ideal for agriculture and construction applications, and provides for minimal elongation.

**Temperature Range:** -4°F (-20°C) to +150°F (+65°C)

**Typical Application:** Water transfer

| Part Number  | Hose Inner Diameter (in) | Length (ft) | Working Pressure (psi) | Weight (ea/lbs) |
|--|--------------------------|-------------|------------------------|-----------------|
| <b>Hose Ends:</b> Aluminum pin lug couplings male x female |                          |             |                        |                 |
| LF150APLX50  | 1 1/2                    | 50          | 70                     | 9.00            |
| LF200APLX50  | 2                        | 50          | 65                     | 13.50           |
| LF300APLX50  | 3                        | 50          | 60                     | 21.50           |
| LF400APLX50  | 4                        | 50          | 50                     | 30.00           |
| <b>Hose Ends:</b> Aluminum quick couplings male x female   |                          |             |                        |                 |
| LF150ACEX50  | 1 1/2                    | 50          | 70                     | 9.50            |
| LF200ACEX50  | 2                        | 50          | 65                     | 13.60           |
| LF300ACEX50  | 3                        | 50          | 60                     | 22.00           |
| LF400ACEX50  | 4                        | 50          | 50                     | 31.50           |



Because we continually examine ways to improve our products, we reserve the right to alter specifications or discontinue products without prior notice.

# AGRICULTURAL HOSE AND COUPLINGS

## Water Transfer & Agricultural Solution Spraying

### Tigerflex™ Green PVC Suction Hose

**Construction:** PVC tube with rigid PVC helix.

**Temperature Range:** -4°F (-20°C) to +150°F (+65°C)

**Typical Application:** Agriculture, construction, contractors, irrigation and rental industries

| Part Number | Hose Inner Diameter (in) | Length (ft) | Working Pressure (psi) at 68°F | Weight (lbs/ft) |
|-------------|--------------------------|-------------|--------------------------------|-----------------|
| J075X100    | 3/4                      | 100         | 110                            | 0.19            |
| J100X100    | 1                        | 100         | 85                             | 0.26            |
| J125X100    | 1 1/4                    | 100         | 85                             | 0.35            |
| J150X100    | 1 1/2                    | 100         | 70                             | 0.48            |
| J200X100    | 2                        | 100         | 65                             | 0.66            |
| J250X100    | 2 1/2                    | 100         | 65                             | 0.87            |
| J300X100    | 3                        | 100         | 60                             | 1.24            |
| J400X100    | 4                        | 100         | 50                             | 1.85            |
| J600X100/20 | 6                        | 100/20      | 40                             | 3.39            |
| J800X20     | 8                        | 20          | 30                             | 5.63            |



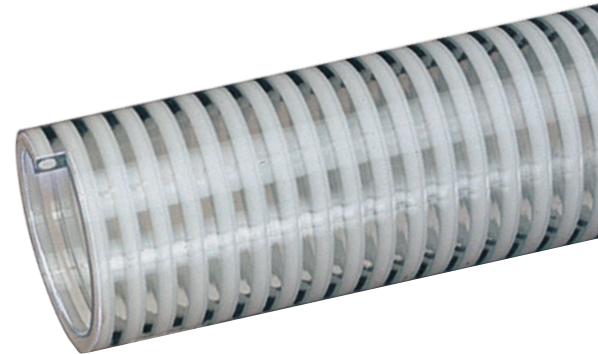
### Tigerflex™ Clear and White PVC Suction Hose

**Construction:** PVC tube with rigid PVC helix.

**Temperature Range:** -4°F (-20°C) to +150°F (+65°C)

**Typical Application:** Irrigation, liquid fertilizers and air seeder/planter seed lines

| Part Number | Hose Inner Diameter (in) | Length (ft) | Working Pressure (psi) at 68°F | Weight (lbs/ft) |
|-------------|--------------------------|-------------|--------------------------------|-----------------|
| H075X100    | 3/4                      | 100         | 110                            | 0.19            |
| H100X100    | 1                        | 100         | 85                             | 0.26            |
| H125X100    | 1 1/4                    | 100         | 85                             | 0.35            |
| H150X100    | 1 1/2                    | 100         | 70                             | 0.48            |
| H200X100    | 2                        | 100         | 65                             | 0.66            |
| H250X100    | 2 1/2                    | 100         | 65                             | 0.87            |
| H300X100    | 3                        | 100         | 60                             | 1.24            |
| H400X100    | 4                        | 100         | 50                             | 1.85            |
| H500X100/20 | 5                        | 100/20      | 45                             | 2.42            |
| H600X100/20 | 6                        | 100/20      | 40                             | 3.39            |



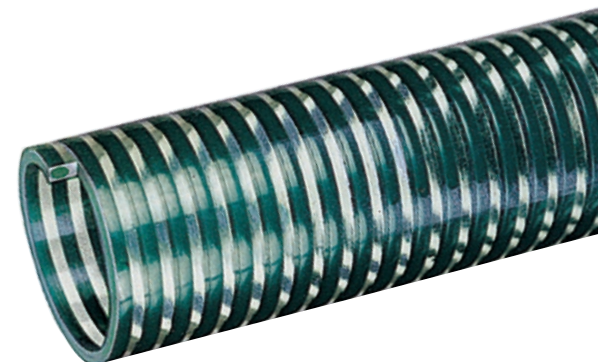
### Tigerflex™ Clear and Green PVC Suction Hose

**Construction:** PVC tube with rigid PVC helix.

**Temperature Range:** -4°F (-20°C) to +150°F (+65°C)

**Typical Application:** Irrigation, liquid fertilizers and air seeder/planter seed lines

| Part Number | Hose Inner Diameter (in) | Length (ft) | Working Pressure (psi) at 68°F | Weight (lbs/ft) |
|-------------|--------------------------|-------------|--------------------------------|-----------------|
| K075X100    | 3/4                      | 100         | 110                            | 0.19            |
| K100X100    | 1                        | 100         | 85                             | 0.26            |
| K125X100    | 1 1/4                    | 100         | 85                             | 0.35            |
| K150X100    | 1 1/2                    | 100         | 70                             | 0.48            |
| K200X100    | 2                        | 100         | 65                             | 0.66            |
| K250X100    | 2 1/2                    | 100         | 65                             | 0.87            |
| K300X100    | 3                        | 100         | 60                             | 1.24            |
| K400X100    | 4                        | 100         | 50                             | 1.85            |



Because we continually examine ways to improve our products, we reserve the right to alter specifications or discontinue products without prior notice.

# AGRICULTURAL HOSE AND COUPLINGS

## Water Transfer & Agricultural Solution Spraying

### Tigerflex™ Low Temperature PVC Suction Hose

**Construction:** PVC tube with rigid PVC helix.

**Temperature Range:** -40°F (-40°C) to +150°F (+65°C)

**Typical Application:** Irrigation and liquid fertilizers

| Part Number  | Hose Inner Diameter (in) | Length (ft) | Working Pressure (psi) at 68°F | Weight (lbs/ft) |
|--------------|--------------------------|-------------|--------------------------------|-----------------|
| BW075X100    | 3/4                      | 100         | 115                            | 0.19            |
| BW100X100    | 1                        | 100         | 90                             | 0.22            |
| BW125X100    | 1 1/4                    | 100         | 90                             | 0.36            |
| BW150X100    | 1 1/2                    | 100         | 90                             | 0.48            |
| BW200X100    | 2                        | 100         | 90                             | 0.62            |
| BW250X100    | 2 1/2                    | 100         | 70                             | 0.87            |
| BW300X100    | 3                        | 100         | 65                             | 1.23            |
| BW400X100    | 4                        | 100         | 55                             | 1.83            |
| BW500X100/20 | 5                        | 100/20      | 45                             | 2.42            |
| BW600X100/20 | 6                        | 100/20      | 40                             | 3.36            |



### Tigerflex™ Solarguard™ High UV Resistance PVC Suction Hose

**Construction:** PVC tube with rigid PVC helix.

**Temperature Range:** -4°F (-20°C) to +150°F (+65°C)

**Typical Application:** Irrigation and liquid fertilizers

| Part Number  | Hose Inner Diameter (in) | Length (ft) | Working Pressure (psi) at 68°F | Weight (lbs/ft) |
|--------------|--------------------------|-------------|--------------------------------|-----------------|
| SG150X100    | 1 1/2                    | 100         | 65                             | 0.38            |
| SG200X100    | 2                        | 100         | 60                             | 0.56            |
| SG300X100    | 3                        | 100         | 55                             | 1.00            |
| SG400X100    | 4                        | 100         | 50                             | 1.70            |
| SG600X100/20 | 6                        | 100/20      | 40                             | 3.36            |

**SOLARGUARD™**



### Tigerflex™ Solarguard™ High UV Resistance PVC Suction Hose

**Construction:** PVC tube with rigid PVC helix.

**Temperature Range:** -4°F (-20°C) to +150°F (+65°C)

**Typical Application:** Irrigation and liquid fertilizers

| Part Number   | Hose Inner Diameter (in) | Length (ft) | Working Pressure (psi) at 68°F | Weight (lbs/ft) |
|---------------|--------------------------|-------------|--------------------------------|-----------------|
| SLR150X100    | 1 1/2                    | 100         | 50                             | 0.34            |
| SLR200X100    | 2                        | 100         | 50                             | 0.52            |
| SLR250X100    | 2 1/2                    | 100         | 45                             | 0.77            |
| SLR300X100    | 3                        | 100         | 45                             | 1.18            |
| SLR400X100    | 4                        | 100         | 35                             | 1.92            |
| SLR600X100/20 | 6                        | 100/20      | 30                             | 3.76            |
| SLR800X40/20  | 8                        | 40/20       | 30                             | 5.99            |

**SOLARGUARD™**



Because we continually examine ways to improve our products, we reserve the right to alter specifications or discontinue products without prior notice.

# AGRICULTURAL HOSE AND COUPLINGS

## Water Transfer & Agricultural Solution/Liquid Manure Spraying

### Tigerflex™ Tiger™ Green EPDM Suction Hose

**Construction:** EPDM tube with rigid polyethylene helix

**Temperature Range:** -4°F (-20°C) to +150°F (+65°C)

**Typical Application:** Irrigation, wastewater and liquid fertilizers

| Part Number  | Hose Inner Diameter (in) | Length (ft) | Working Pressure (psi) at 68°F | Weight (lbs/ft) |
|--------------|--------------------------|-------------|--------------------------------|-----------------|
| TG100X100    | 1                        | 100         | 65                             | 0.28            |
| TG125X100    | 1 1/4                    | 100         | 60                             | 0.33            |
| TG150X100    | 1 1/2                    | 100         | 50                             | 0.44            |
| TG200X100    | 2                        | 100         | 50                             | 0.67            |
| TG250X100    | 2 1/2                    | 100         | 45                             | 0.95            |
| TG300X100    | 3                        | 100         | 45                             | 1.14            |
| TG400X100    | 4                        | 100         | 40                             | 1.84            |
| TG600X100/20 | 6                        | 100/20      | 30                             | 3.07            |



### Tigerflex™ AG™ Series Liquid Fertilizer Spray Hose

**Construction:** EPDM tube with rigid polyethylene helix

**Temperature Range:** -40°F (-40°C) to +160°F (+71°C)

**Typical Application:** Irrigation, wastewater and liquid fertilizers

| Part Number | Hose Inner Diameter (in) | Length (ft) | Working Pressure (psi) at 68°F | Weight (lbs/ft) |
|-------------|--------------------------|-------------|--------------------------------|-----------------|
| AG150X100   | 1 1/2                    | 100         | 45                             | 0.39            |
| AG200X100   | 2                        | 100         | 45                             | 0.57            |
| AG300X100   | 3                        | 100         | 40                             | 1.02            |



### Tigerflex™ Tiger™ - SD EPDM Suction and Discharge Hose

**Construction:** EPDM tube and cover, polyester fabric reinforcement and rigid polyethylene helix

**Temperature Range:** -40°F (-40°C) to +160°F (+71°C)

**Typical Application:** Irrigation, wastewater and liquid fertilizers

| Part Number | Hose Inner Diameter (in) | Length (ft) | Working Pressure (psi) at 68°F | Weight (lbs/ft) |
|-------------|--------------------------|-------------|--------------------------------|-----------------|
| TSD125X100  | 1 1/4                    | 100         | 100                            | 0.41            |
| TSD150X100  | 1 1/2                    | 100         | 100                            | 0.51            |
| TSD200X100  | 2                        | 100         | 100                            | 0.73            |
| TSD300X100  | 3                        | 100         | 90                             | 1.18            |



Because we continually examine ways to improve our products, we reserve the right to alter specifications or discontinue products without prior notice.

# AGRICULTURAL HOSE AND COUPLINGS

## Water Suction and Discharge Hose

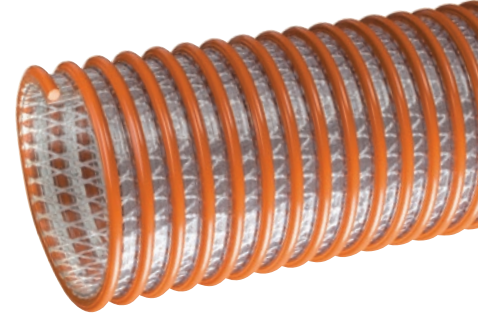
### Tigerflex™ Suction & Discharge Hose

**Construction:** PVC tube, polyester fabric reinforcement and rigid PVC helix.

**Temperature Range:** -4°F (-20°C) to +150°F (+65°C)

**Typical Application:** Irrigation and liquid fertilizers

| Part Number   | Hose Inner Diameter (in) | Length (ft) | Working Pressure (psi) at 68°F | Weight (lbs/ft) |
|---------------|--------------------------|-------------|--------------------------------|-----------------|
| WST150X100    | 1 1/2                    | 100         | 110                            | 0.42            |
| WST200X100    | 2                        | 100         | 100                            | 0.74            |
| WST300X100    | 3                        | 100         | 100                            | 1.13            |
| WST400X100    | 4                        | 100         | 75                             | 1.74            |
| WST500X100    | 5                        | 100         | 70                             | 2.95            |
| WST600X100/20 | 6                        | 100/20      | 70                             | 3.88            |
| WST800X20     | 8                        | 20          | 60                             | 5.57            |



### Tigerflex™ Solarguard™ High UV Resistance Suction and Discharge Hose

**Construction:** PVC tube and cover, polyester fabric reinforcement and rigid PVC helix.

**Temperature Range:** -4°F (-20°C) to +150°F (+65°C)

**Typical Application:** Irrigation and liquid fertilizers

| Part Number       | Hose Inner Diameter (in) | Length (ft) | Working Pressure (psi) at 68°F | Weight (lbs/ft) |
|-------------------|--------------------------|-------------|--------------------------------|-----------------|
| WST-SLR150X100    | 1 1/2                    | 100         | 110                            | 0.42            |
| WST-SLR200X100    | 2                        | 100         | 100                            | 0.74            |
| WST-SLR300X100    | 3                        | 100         | 100                            | 1.13            |
| WST-SLR400X100    | 4                        | 100         | 75                             | 1.74            |
| WST-SLR600X100/20 | 6                        | 100/20      | 70                             | 3.88            |
| WST-SLR800X20     | 8                        | 20          | 60                             | 5.57            |

**SOLARGUARD™**



Because we continually examine ways to improve our products, we reserve the right to alter specifications or discontinue products without prior notice.

# AGRICULTURAL HOSE AND COUPLINGS

## Water & Concentrated Agricultural Solution Hoses

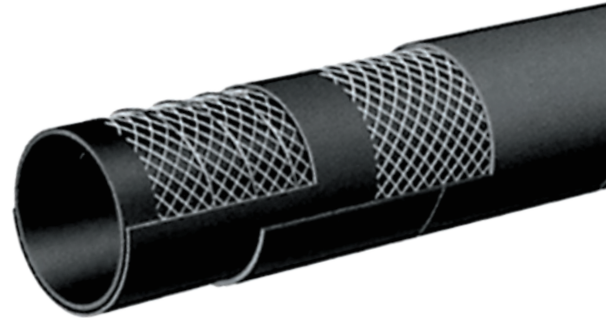
### Alfagomma® Heavy Duty Suction & Discharge Hose

**Construction:** EPDM tube with high tensile strength textile cords and steel helix wires.

**Temperature Range:** -40°F (-40°C) to +212°F (+100°C)

**Typical Application:** Agriculture, construction, contractors, irrigation and rental industries

| Part Number         | Hose Inner Diameter (in) | Length (ft) | Working Pressure (psi) at 68°F | Weight (lbs/ft) |
|---------------------|--------------------------|-------------|--------------------------------|-----------------|
| T202AA150X100       | 1 1/2                    | 100         | 150                            | 0.47            |
| T202AA200X100       | 2                        | 100         | 150                            | 0.84            |
| T202AA250X100       | 2 1/2                    | 100         | 150                            | 1.20            |
| T202AA300X100       | 3                        | 100         | 150                            | 1.44            |
| T202AA400X100       | 4                        | 100         | 150                            | 2.03            |
| T202AA500X100/50/20 | 5                        | 100/50/20   | 150                            | 3.18            |
| T202AA600X100/50/25 | 6                        | 100/50/25   | 150                            | 4.01            |
| T202AA600X20        | 6                        | 20          | 150                            | 4.01            |
| T202AA800X25/20     | 8                        | 25/20       | 150                            | 6.59            |
| T202AA1000X20       | 10                       | 20          | 150                            | 9.03            |
| T202AA1200X20       | 12                       | 20          | 150                            | 12.54           |



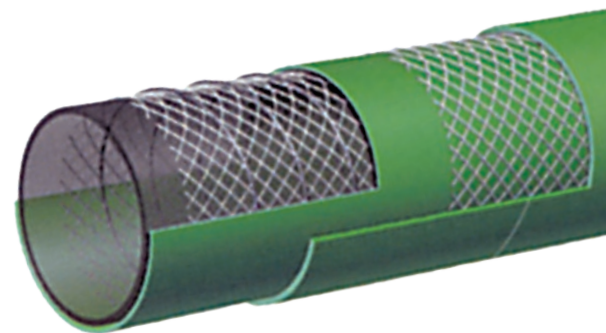
### Alfagomma® 240 PSI Acid & Chemical Suction & Discharge Hose

**Construction:** XLPE (cross-linked polyethylene) tube, high tensile strength cords, steel helix wires and EPDM cover.

**Temperature Range:** -22°F (-30°C) to +176°F (+80°C)

**Typical Application:** Designed for the transfer of concentrated (non-dilute) agricultural chemicals. Handles 90% of existing agricultural chemicals and solvents\*

| Part Number   | Hose Inner Diameter (in) | Length (ft) | Working Pressure (psi) at 68°F | Weight (lbs/ft) |
|---------------|--------------------------|-------------|--------------------------------|-----------------|
| T5050G075X100 | 3/4                      | 100         | 240                            | 0.46            |
| T5050G100X100 | 1                        | 100         | 240                            | 0.56            |
| T5050G150X100 | 1 1/2                    | 100         | 240                            | 0.76            |
| T5050G200X100 | 2                        | 100         | 240                            | 1.00            |
| T5050G300X100 | 3                        | 100         | 240                            | 1.83            |
| T5050G400X100 | 4                        | 100         | 240                            | 2.50            |



\* **Warning:** Before using chemical hoses consult chemical resistance chart on page 79 of the Alfagomma Industrial Hose catalog or consult factory.

Because we continually examine ways to improve our products, we reserve the right to alter specifications or discontinue products without prior notice.

# AGRICULTURAL HOSE AND COUPLINGS

## Fuel & Oil Hoses

### Farm Tank Oil Resistant NBR Hose Assemblies

**Construction:** Class A NBR tube, NBR/PVC cover, high tensile strength yarn and static wire

**Temperature Range:** 40°F (-40°C) to +180°F (82°C)

**Hose Ends:**

**3/4" ID:** 3/4" X 3/4" Brass GHT M X M, **1" ID:** 1" X 1" Brass GHT (Garden Hose) M X M

**Typical Application:** Fuel filler hose for agricultural, construction and industrial equipment

| Part Number  | Hose Inner Diameter (in) | Length (ft) | Max. Working Pressure (psi) at 70°F | Weight (lbs/ea) |
|--------------|--------------------------|-------------|-------------------------------------|-----------------|
| BLKFT-075X8  | 3/4                      | 8           | 60                                  | 3.3             |
| BLKFT-075X10 | 3/4                      | 10          | 60                                  | 3.8             |
| BLKFT-075X12 | 3/4                      | 12          | 60                                  | 4.0             |
| BLKFT-075X14 | 3/4                      | 14          | 60                                  | 5.0             |
| BLKFT-075X15 | 3/4                      | 15          | 60                                  | 5.4             |
| BLKFT-075X20 | 3/5                      | 20          | 60                                  | 7.0             |
| BLKFT-100X8  | 1                        | 8           | 60                                  | 4.8             |
| BLKFT-100X10 | 1                        | 10          | 60                                  | 5.8             |
| BLKFT-100X12 | 1                        | 12          | 60                                  | 6.7             |
| BLKFT-100X14 | 1                        | 14          | 60                                  | 7.5             |
| BLKFT-100X15 | 1                        | 15          | 60                                  | 8.0             |
| BLKFT-100X20 | 1                        | 20          | 60                                  | 10.5            |



### Braid-Lock® 300 PSI Push-On Hose

**Construction:** Oil Resistant Nitrile Tube with Braided Textile Reinforcement and Synthetic Rubber Cover

**Temperature Range:** -30°F (-34°C) to +180°F (+82°C)

**Typical Application:** Air Tools, Agricultural Equipment Oil Transfer

| Part Number | Hose Inner Diameter (in) | Length (ft) | Working Pressure (psi) at 68°F | Weight (lbs/ft) |
|-------------|--------------------------|-------------|--------------------------------|-----------------|
| BL-04BK     | 1/4                      | 500         | 300                            | 0.09            |
| BL-06BK     | 3/8                      | 500         | 300                            | 0.12            |
| BL-08BK     | 1/2                      | 500         | 300                            | 0.17            |
| BL-10BK     | 5/8                      | 200         | 300                            | 0.21            |
| BL-12BK     | 3/4                      | 200         | 300                            | 0.24            |



Because we continually examine ways to improve our products, we reserve the right to alter specifications or discontinue products without prior notice.

# AGRICULTURAL HOSE AND COUPLINGS

## Water Discharge & Drip Irrigation

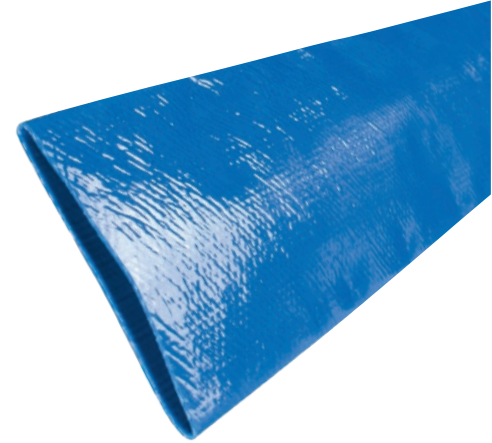
### Vinylflow® Premium PVC Irrigation & Water Discharge Hose

**Construction:** Spiral homogeneous PVC construction is ideal for irrigation and agriculture applications, and provides for minimal elongation.

**Temperature Range:** -5°F (-20°C) to +170°F (+76°C)

**Typical Application:** Water transfer and drip irrigation

| Part Number   | Hose Inner Diameter (in) | Length (ft) | Working Pressure (psi) at 68°F | Weight (lbs/ft) |
|---------------|--------------------------|-------------|--------------------------------|-----------------|
| VF150X300     | 1 1/2                    | 300         | 80                             | 0.16            |
| VF200X300     | 2                        | 300         | 80                             | 0.23            |
| VF250X300     | 2 1/2                    | 300         | 80                             | 0.29            |
| VF300X300     | 3                        | 300         | 70                             | 0.39            |
| VF400X300     | 4                        | 300         | 70                             | 0.52            |
| VF500X300     | 5                        | 300         | 40                             | 0.68            |
| VF600X300     | 6                        | 300         | 50                             | 0.86            |
| VF800X300/100 | 8                        | 300/100     | 45                             | 1.30            |
| VF1000X100    | 10                       | 100         | 35                             | 1.81            |
| VF1200X100    | 12                       | 100         | 30                             | 1.95            |
| VF1400X100    | 14                       | 100         | 30                             | 2.62            |
| VF1600X100    | 16                       | 100         | 30                             | 3.10            |



Because we continually examine ways to improve our products, we reserve the right to alter specifications or discontinue products without prior notice.



# AGRICULTURAL HOSE AND COUPLINGS

## Heavy Duty Water Discharge

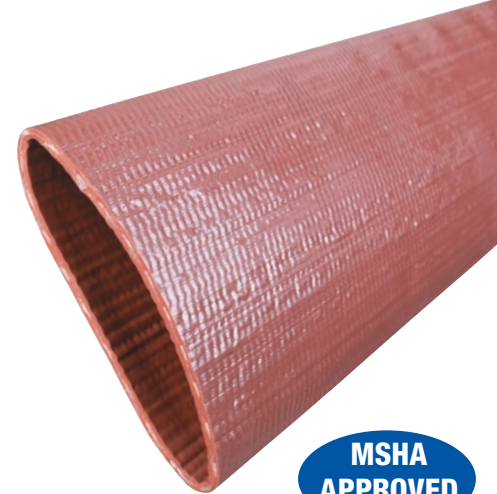
### Ironsides™ Premium Duty PVC Water Discharge Hose

**Construction:** Spiral homogeneous PVC construction is ideal for agriculture and construction applications, and provides for minimal elongation.

**Temperature Range:** -5°F (-20°C) to +170°F (+76°C)

**Typical Application:** Water transfer, mining

| Part Number   | Hose Inner Diameter (in) | Length (ft) | Working Pressure (psi) at 68°F | Weight (lbs/ft) |
|---------------|--------------------------|-------------|--------------------------------|-----------------|
| IS150X300     | 1 1/2                    | 300         | 150                            | 0.23            |
| IS200X300     | 2                        | 300         | 150                            | 0.32            |
| IS250X300     | 2 1/2                    | 300         | 150                            | 0.41            |
| IS300X300     | 3                        | 300         | 150                            | 0.52            |
| IS400X300     | 4                        | 300         | 125                            | 0.76            |
| IS600X300     | 6                        | 300         | 115                            | 1.21            |
| IS800X300/100 | 8                        | 300/100     | 70                             | 1.62            |
| IS1000X100    | 10                       | 100         | 65                             | 1.95            |



MSHA  
APPROVED

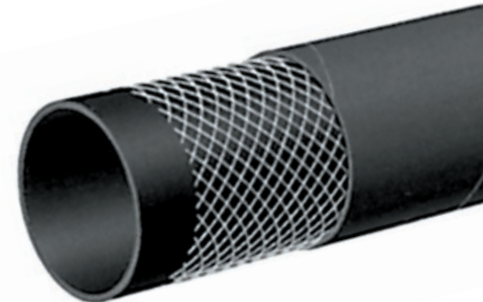
### 150 PSI EPDM Water Discharge Hose

**Construction:** EPDM tube and cover with high tensile strength cords.

**Temperature Range:** -22°F (-30°C) to +176°F (+80°C)

**Typical Application:** Water discharge

| Part Number       | Hose Inner Diameter (in) | Length (ft) | Working Pressure (psi) at 68°F | Weight (lbs/ft) |
|-------------------|--------------------------|-------------|--------------------------------|-----------------|
| T253AA150X100     | 1 1/2                    | 100         | 150                            | 0.37            |
| T253AA200X100     | 2                        | 100         | 150                            | 0.50            |
| T253AA250X100     | 2 1/2                    | 100         | 150                            | 0.60            |
| T253AA300X100     | 3                        | 100         | 150                            | 0.86            |
| T253AA400X100     | 4                        | 100         | 150                            | 1.19            |
| T253AA600X100/50  | 6                        | 100/50      | 150                            | 2.00            |
| T253AA662X100/50  | 6 5/8                    | 100/50      | 150                            | 2.17            |
| T253AA800X100/50  | 8                        | 100/50      | 150                            | 2.82            |
| T253AA1000X100/50 | 10                       | 100/50      | 150                            | 5.11            |
| T253AA1200X50     | 12                       | 50          | 150                            | 5.93            |



Because we continually examine ways to improve our products, we reserve the right to alter specifications or discontinue products without prior notice.

# AGRICULTURAL HOSE AND COUPLINGS

## Water & Liquid Manure Supply Lines

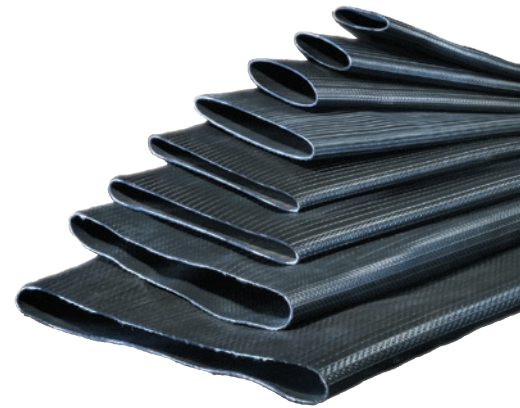
### OROFLEX® 10 PVC/Nitrile Rubber Discharge Hose

**Construction:** Black PVC/Nitrile hose using an extruded through-the-weave process with circular woven high tenacity polyester reinforcement.

**Temperature Range:** -20°F (-29°C) to +176°F (+80°C)

**Typical Application:** Water transfer

| Part Number         | Hose Inner Diameter (in) | Length (ft) | Working Pressure (psi) at 68°F | Weight (lbs/ft) |
|---------------------|--------------------------|-------------|--------------------------------|-----------------|
| OF10-150X200        | 1 1/2                    | 200         | 200                            | 0.20            |
| OF10-200X200        | 2                        | 200         | 200                            | 0.27            |
| OF10-250X200        | 2 1/2                    | 200         | 200                            | 0.38            |
| OF10-300X200/100    | 3                        | 200/100     | 175                            | 0.48            |
| OF10-400X200/100/50 | 4                        | 200/100/50  | 175                            | 0.71            |
| OF10-500X200        | 5                        | 200         | 175                            | 0.94            |
| OF10-600X200/100/50 | 6                        | 200/100/50  | 175                            | 1.08            |
| OF10-800X100/50     | 8                        | 100/50      | 145                            | 1.85            |



### OROFLEX® 20 YELLOW Heavy Duty PVC/Nitrile Rubber Air & Discharge Hose

**Construction:** Yellow PVC/Nitrile hose using an extruded through-the-weave process with circular woven high tenacity polyester reinforcement.

**Temperature Range:** -20°F (-29°C) to +176°F (+80°C)

**Typical Application:** Agricultural, water transfer, air compressors

| Part Number      | Hose Inner Diameter (in) | Length (ft) | Working Pressure (psi) at 68°F |       | Weight (lbs/ft) |
|------------------|--------------------------|-------------|--------------------------------|-------|-----------------|
|                  |                          |             | (liquid)                       | (air) |                 |
| OF20Y-75X200/50  | 3/4                      | 200/50      | 480                            | 360   | 0.13            |
| OF20Y-100X200/50 | 1                        | 200/50      | 550                            | 415   | 0.17            |
| OF20Y-150X200    | 1 1/2                    | 200         | 305                            | 225   | 0.30            |
| OF20Y-200X200    | 2                        | 200         | 305                            | 225   | 0.43            |
| OF20Y-250X200    | 2 1/2                    | 200         | 300                            | 185   | 0.47            |
| OF20Y-300X200    | 3                        | 200         | 260                            | 160   | 0.61            |
| OF20Y-400X200    | 4                        | 200         | 300                            | —     | 0.84            |
| OF20Y-600X100    | 6                        | 100         | 290                            | —     | 1.68            |



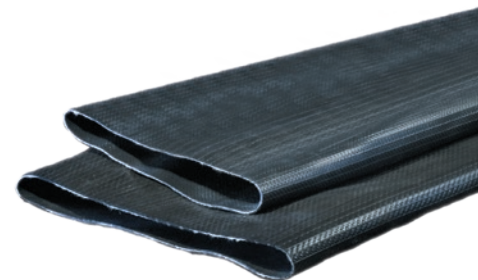
### OROFLEX® 20 BLACK Heavy Duty PVC/Nitrile Rubber Discharge Hose

**Construction:** Black PVC/Nitrile hose using an extruded through-the-weave process with circular woven high tenacity polyester reinforcement.

**Temperature Range:** -20°F (-29°C) to +176°F (+80°C)

**Typical Application:** Water & liquid manure transfer

| Part Number    | Hose Inner Diameter (in) | Length (ft) | Working Pressure (psi) at 68°F | Weight (lbs/ft) |
|----------------|--------------------------|-------------|--------------------------------|-----------------|
| OF20B-600X660  | 6                        | 660         | 290                            | 1.68            |
| OF20B-700x660  | 7                        | 660         | 230                            | 1.88            |
| OF20B-800X660  | 8                        | 660         | 200                            | 2.22            |
| OF20B-1000X660 | 10                       | 660/100/50  | 200                            | 2.65            |
| OF20B-1200x660 | 12                       | 660/100/50  | 155                            | 3.23            |



Because we continually examine ways to improve our products, we reserve the right to alter specifications or discontinue products without prior notice.

# AGRICULTURAL HOSE AND COUPLINGS

## Traveling Irrigator Supply Line & Manure Drag Hose



### OROFLEX® BANDAMA PVC/Nitrile Rubber Irrigation Hose

**Construction:** Black PVC/Nitrile hose using an extruded through-the-weave process with circular woven high tenacity polyester reinforcement.

**Temperature Range:** -20°F (-29°C) to +176°F (+80°C)

**Typical Application:** Irrigation supply lines, traveling irrigators

| Part Number | Hose Inner Diameter (in) | Length (ft) | Working Pressure (psi) at 68°F | Weight (lbs/ft) |
|-------------|--------------------------|-------------|--------------------------------|-----------------|
| BD250X660   | 2 1/2                    | 660         | 290                            | 0.57            |
| BD300X660   | 3                        | 660         | 260                            | 0.67            |
| BD350X660   | 3 1/2                    | 660         | 230                            | 0.77            |
| BD400X660   | 4                        | 660         | 200                            | 0.94            |
| BD450X660   | 4 1/2                    | 660         | 175                            | 1.08            |
| BD500X660   | 5                        | 660         | 175                            | 1.21            |
| BD600X660   | 6                        | 660         | 175                            | 1.41            |



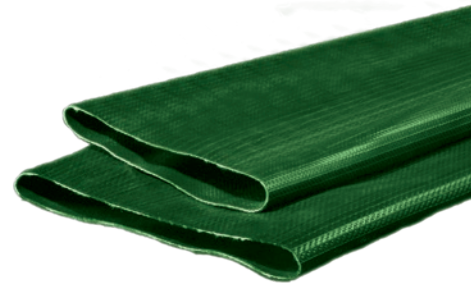
### OROFLEX® DRAG Polyurethane Manure Drag Hose

**Construction:** Green polyurethane (TPU) hose using an extruded through-the-weave process with circular woven high tenacity polyester reinforcement.

**Temperature Range:** -20°F (-29°C) to +176°F (+80°C)

**Typical Application:** Liquid manure

| Part Number   | Hose Inner Diameter (in) | Length (ft) | Working Pressure (psi) at 68°F | Weight (lbs/ft) |
|---------------|--------------------------|-------------|--------------------------------|-----------------|
| +OFDG-400-660 | 4                        | 660         | 245                            | 0.87            |
| +OFDG-450-660 | 4 1/2                    | 660         | 200                            | 0.94            |
| OFDG-500X660  | 5                        | 660         | 200                            | 1.14            |
| OFDG-550X660  | 5 1/2                    | 660         | 175                            | 1.28            |
| OFDG-600X660  | 6                        | 660         | 175                            | 1.38            |



**+NOTE:** This is a non-stock product. Minimum order requirements may apply. Contact Kuriyama customer service for details.

Because we continually examine ways to improve our products, we reserve the right to alter specifications or discontinue products without prior notice.

# AGRICULTURAL HOSE AND COUPLINGS

## Food Grade Liquid Transfer Hoses

### Kuri Tec® Clearbraid® Food & Beverage Hose

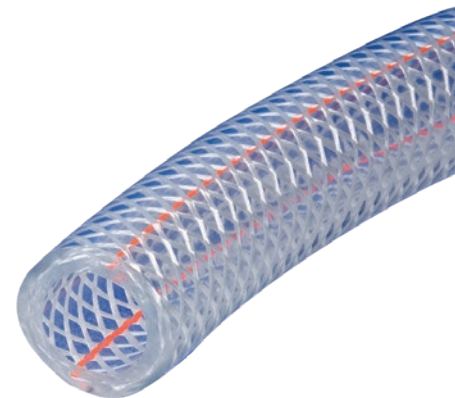
**Construction:** PVC tube and cover with high tensile strength yarn.

**Compliances:** 3A, FDA, NSF, RoHS, USDA, USP

**Temperature Range:** +25°F (-4°C) to +150°F (+65°C)

**Typical Application:** Liquid transfer

| Part Number    | Hose Inner Diameter (in) | Length (ft) | Working Pressure (psi) at 70°F | Weight (lbs/ft) |
|----------------|--------------------------|-------------|--------------------------------|-----------------|
| K3150-03X100   | 3/16                     | 100         | 250                            | 0.04            |
| K3150-03X300   | 3/16                     | 300         | 250                            | 0.04            |
| K3150-04X100   | 1/4                      | 100         | 250                            | 0.06            |
| K3150-04X300   | 1/4                      | 300         | 250                            | 0.06            |
| K3150-05X100   | 5/16                     | 100         | 250                            | 0.08            |
| K3150-05X300   | 5/16                     | 300         | 250                            | 0.08            |
| K3150-06X100   | 3/8                      | 100         | 225                            | 0.09            |
| K3150-06X300   | 3/8                      | 300         | 225                            | 0.09            |
| K3150-08X100   | 1/2                      | 100         | 200                            | 0.13            |
| K3150-08X300   | 1/2                      | 300         | 200                            | 0.13            |
| K3150-10X100   | 5/8                      | 100         | 200                            | 0.18            |
| K3150-10X200   | 5/8                      | 200         | 200                            | 0.18            |
| K3150-12X100   | 3/4                      | 100         | 150                            | 0.22            |
| K3150-12X200   | 3/4                      | 200         | 150                            | 0.22            |
| K3150-16X100   | 1                        | 100         | 125                            | 0.30            |
| K3150-16X200   | 1                        | 200         | 125                            | 0.30            |
| K3150-20X50    | 1 1/4                    | 50          | 100                            | 0.45            |
| K3150-20X100   | 1 1/4                    | 100         | 100                            | 0.45            |
| K3150-24X50    | 1 1/2                    | 50          | 100                            | 0.64            |
| K3150-24X100   | 1 1/2                    | 100         | 100                            | 0.64            |
| K3150-32X50    | 2                        | 50          | 75                             | 0.94            |
| K3150X32X100   | 2                        | 100         | 75                             | 0.94            |
| K3150-MM04X100 | 4 mm                     | 100         | 250                            | 0.04            |
| K3150-MM06X100 | 6 mm                     | 100         | 250                            | 0.06            |
| K3150-MM08X100 | 8 mm                     | 100         | 250                            | 0.08            |
| K3150-MM10X100 | 10 mm                    | 100         | 225                            | 0.10            |
| K3150-MM12X100 | 12 mm                    | 100         | 200                            | 0.12            |
| K3150-MM19X100 | 19 mm                    | 100         | 150                            | 0.21            |



Because we continually examine ways to improve our products, we reserve the right to alter specifications or discontinue products without prior notice.

# AGRICULTURAL HOSE AND COUPLINGS

## Food Grade Liquid Transfer Hoses

### Kuri Tec® Clear PVC Tubing

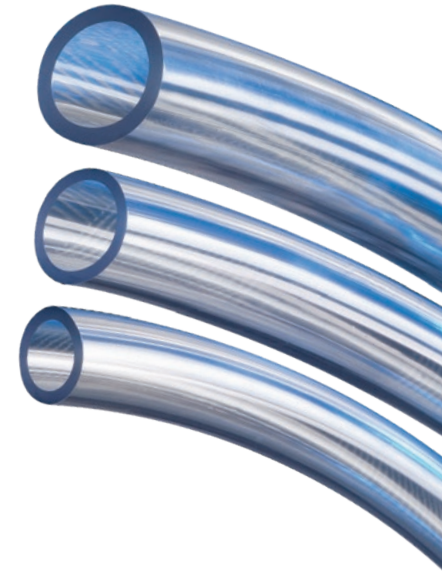
**Construction:** PVC Tube

**Compliances:** FDA, RoHS

**Temperature Range:** +25°F (-4°C) to +150°F (+65°C)

**Typical Application:** Liquid transfer and seed delivery

| Part Number   | Tubing Inner Diameter (in) | Hose Inner Diameter (in) | Length (ft) | Working Pressure (psi) at 70°F | Weight (lbs/ft) |
|---------------|----------------------------|--------------------------|-------------|--------------------------------|-----------------|
| K050-0204X100 | 1/8                        | 1/4                      | 100         | 65                             | 0.02            |
| K050-0305X100 | 3/16                       | 5/16                     | 100         | 55                             | 0.03            |
| K050-0406X100 | 1/4                        | 3/8                      | 100         | 55                             | 0.03            |
| K050-0408X100 | 1/4                        | 1/2                      | 100         | 60                             | 0.08            |
| K050-0507X100 | 5/16                       | 7/16                     | 100         | 50                             | 0.04            |
| K050-0608X100 | 3/8                        | 1/2                      | 100         | 45                             | 0.05            |
| K050-0609X100 | 3/8                        | 9/16                     | 100         | 50                             | 0.08            |
| K050-0610X100 | 3/8                        | 5/8                      | 100         | 55                             | 0.11            |
| K050-0810X100 | 1/2                        | 5/8                      | 100         | 30                             | 0.06            |
| K050-0812X100 | 1/2                        | 3/4                      | 100         | 45                             | 0.13            |
| K050-1013X100 | 5/8                        | 13/16                    | 100         | 35                             | 0.12            |
| K050-1014X100 | 5/8                        | 7/8                      | 100         | 40                             | 0.16            |
| K050-1216X100 | 3/4                        | 1                        | 100         | 35                             | 0.19            |
| K050-1418X100 | 7/8                        | 1-1/8                    | 100         | 30                             | 0.21            |
| K050-1620X100 | 1                          | 1 1/4                    | 100         | 25                             | 0.24            |
| K050-2024X50  | 1 1/4                      | 1 1/2                    | 50          | 20                             | 0.30            |
| K050-2430X50  | 1 1/2                      | 1-7/8                    | 50          | 30                             | 0.54            |
| K050-2432X50  | 1 1/2                      | 2                        | 50          | 35                             | 0.75            |
| K050-3240X50  | 2                          | 2 1/2                    | 50          | 35                             | 0.96            |



### Tigerflex™ Food Grade Liquid Suction Hose

**Construction:** PVC tube with rigid PVC helix

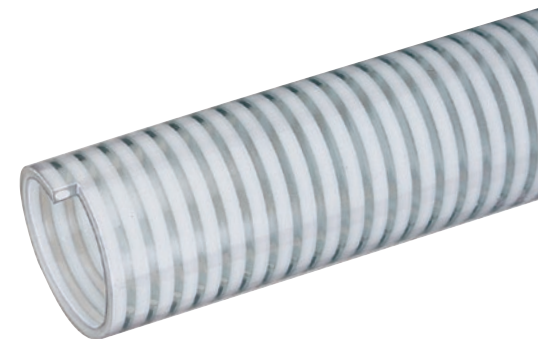
**Compliances:** 3A, FDA, RoHS, USDA

**Temperature Range (MILK Series):** -4°F (-20°C) to +150°F (+65°C)

**Temperature Range (MILK-LT Series):** -40°F (-40°C) to +150°F (+65°C)

**Typical Application:** Milk and dairy product transfer

| Part Number    | Hose Inner Diameter (in) | Length (ft) | Working Pressure (psi) at 68°F | Weight (lbs/ft) |
|----------------|--------------------------|-------------|--------------------------------|-----------------|
| MILK150X100    | 1 1/2                    | 100         | 75                             | 0.45            |
| MILK200X100    | 2                        | 100         | 75                             | 0.63            |
| MILK250X100    | 2 1/2                    | 100         | 55                             | 0.81            |
| MILK300X100    | 3                        | 100         | 55                             | 1.18            |
| MILK-LT150X100 | 1 1/2                    | 100         | 75                             | 0.45            |
| MILK-LT200X100 | 2                        | 100         | 75                             | 0.65            |
| MILK-LT250X100 | 2 1/2                    | 100         | 55                             | 0.84            |
| MILK-LT300X100 | 3                        | 100         | 55                             | 1.20            |



Because we continually examine ways to improve our products, we reserve the right to alter specifications or discontinue products without prior notice.

# AGRICULTURAL HOSE AND COUPLINGS

## Food Grade Liquid Transfer Hoses

### Tigerflex™ Food Grade Liquid Suction Hose

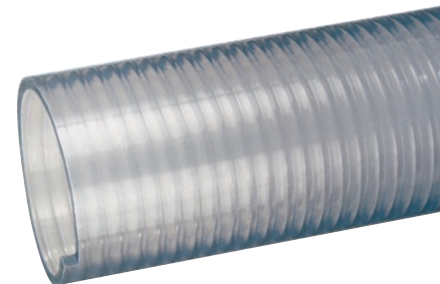
**Construction:** PVC tube with rigid PVC helix.

**Compliances:** 3A, FDA, RoHS, USDA

**Temperature Range:** -4°F (-20°C) to +150°F (+65°C)

**Typical Application:** Food grade liquids such as potable water, wine & juice

| Part Number  | Hose Inner Diameter (in) | Length (ft) | Working Pressure (psi) at 68°F | Weight (lbs/ft) |
|--------------|--------------------------|-------------|--------------------------------|-----------------|
| FT075X100    | 3/4                      | 100         | 115                            | 0.17            |
| FT100X100    | 1                        | 100         | 100                            | 0.24            |
| FT125X100    | 1 1/4                    | 100         | 90                             | 0.44            |
| FT150X100    | 1 1/2                    | 100         | 85                             | 0.50            |
| FT200X100    | 2                        | 100         | 85                             | 0.71            |
| FT250X100    | 2 1/2                    | 100         | 65                             | 0.94            |
| FT300X100    | 3                        | 100         | 55                             | 1.14            |
| FT400X100/60 | 4                        | 100/60      | 50                             | 1.91            |
| FT500X50/20  | 5                        | 50/20       | 40                             | 2.41            |
| FT600X20     | 6                        | 20          | 30                             | 3.28            |
| FT800X20     | 8                        | 20          | 25                             | 5.67            |



### Tigerflex™ Food Grade Liquid Suction & Discharge Hose

**Construction:** PVC tube with rigid PVC helix and fabric reinforcement.

**Compliances:** 3A, FDA, RoHS, USDA

**Temperature Range:** -4°F (-20°C) to +150°F (+65°C)

**Typical Application:** Food grade liquids such as potable water, wine & juice

| Part Number    | Hose Inner Diameter (in) | Length (ft) | Working Pressure (psi) at 68°F | Weight (lbs/ft) |
|----------------|--------------------------|-------------|--------------------------------|-----------------|
| WSTF150X100    | 1 1/2                    | 100         | 110                            | 0.42            |
| WSTF200X100    | 2                        | 100         | 100                            | 0.74            |
| WSTF300X100/20 | 3                        | 100/20      | 100                            | 1.13            |
| WSTF400X100/20 | 4                        | 100/20      | 75                             | 1.74            |
| WSTF600X100/20 | 6                        | 100/20      | 70                             | 3.88            |



### Alfagomma® Heavy Duty Suction & Discharge Food Grade Oil Resistant Hose

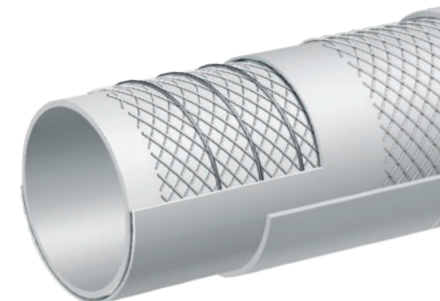
**Construction:** NBR/PVC cover, NBR tube, high tensile braid and steel helix wires.

**Compliances:** 3A, FDA

**Temperature Range:** -22°F (-30° C) to +176°F (+80° C)

**Typical Application:** Transfer of fatty, oily and alcoholic liquids\*

| Part Number   | Hose Inner Diameter (in) | Length (ft) | Working Pressure (psi) at 68°F | Weight (lbs/ft) |
|---------------|--------------------------|-------------|--------------------------------|-----------------|
| T405LL100x100 | 1                        | 100         | 150                            | 0.51            |
| T405LL150x100 | 1 1/2                    | 100         | 150                            | 0.84            |
| T405LL200x100 | 2                        | 100         | 150                            | 1.08            |
| T405LL300x100 | 3                        | 100         | 150                            | 1.71            |
| T405LL400x100 | 4                        | 100         | 150                            | 2.36            |



\*Up to 75 proof

Note: This hose also comes with a grey cover, T405LB Series.

Because we continually examine ways to improve our products, we reserve the right to alter specifications or discontinue products without prior notice.

# AGRICULTURAL HOSE AND COUPLINGS

## Grain and Material Handling

### Hose Tec® Stainless Steel, Unlined Bulk Material Transfer Hose Assemblies

**Construction:** Stainless steel tube with stainless steel ends.

**Maximum Service Temperature:** +1500°F (+815°C)

**Hose Ends:** Male NPT

**Typical Application:** Bulk truck and railcar unloading, heavy duty material handling

| Part Number       | Hose Inner Diameter (in) | Length (ft) | Weight (lbs/ea) |
|-------------------|--------------------------|-------------|-----------------|
| HTS4200-300X10TOE | 3                        | 10          | 22              |
| HTS4200-400X10TOE | 4                        | 10          | 28              |
| HTS4200-500X10TOE | 5                        | 10          | 34              |
| HTS4200-600X10TOE | 6                        | 10          | 42              |



### Flexair™ Urevent™ Clear Heavy Duty Food Grade Polyurethane Ducting/ Material Handling Hose

**Construction:** Ether polyurethane tube with steel wire helix.

**Compliances:** FDA, ROHS

**Temperature Range:** -65°F (-54°C) to +225°F (+107°C)

**Typical Application:** In plant transfer of dry materials and powders

| Part Number    | Hose Inner Diameter (in) | Length (ft) | Working Pressure (psi) at 68°F | Weight (lbs/ft) |
|----------------|--------------------------|-------------|--------------------------------|-----------------|
| UREH-CL400X25  | 4                        | 25          | 26                             | 0.73            |
| UREH-CL500X25  | 5                        | 25          | 22                             | 0.84            |
| UREH-CL600X25  | 6                        | 25          | 20                             | 1.20            |
| UREH-CL800X25  | 8                        | 25          | 14                             | 1.67            |
| UREH-CL1000X25 | 10                       | 25          | 11                             | 2.03            |
| UREH-CL1200X25 | 12                       | 25          | 10                             | 2.47            |



### Tigerflex™ Tiger-TR1™ Heavy Duty SBR Wet or Dry Material Handling Hose

**Construction:** SBR tube with PVC helix.

**Temperature Range:** -40°F (-40°C) to +150°F (+65°C)

**Typical Application:** Wet or dry abrasive material handling, plant vac systems

| Part Number    | Hose Inner Diameter (in) | Length (ft) | Working Pressure (psi) at 68°F | Weight (lbs/ft) |
|----------------|--------------------------|-------------|--------------------------------|-----------------|
| TR1-150X100    | 1 1/2                    | 100         | 35                             | 0.47            |
| TR1-200X100    | 2                        | 100         | 32                             | 0.65            |
| TR1-250X100    | 2 1/2                    | 100         | 30                             | 0.84            |
| TR1-300X100    | 3                        | 100         | 28                             | 0.90            |
| TR1-400X100    | 4                        | 100         | 26                             | 1.73            |
| TR1-500X20/100 | 5                        | 100/20      | 21                             | 3.00            |
| TR1-600X20/100 | 6                        | 100/20      | 19                             | 4.00            |
| TR1-800X20     | 8                        | 20          | 19                             | 7.40            |



Because we continually examine ways to improve our products, we reserve the right to alter specifications or discontinue products without prior notice.

# AGRICULTURAL HOSE AND COUPLINGS

## Sanitary Fittings



### Sanitary SS316 Tri-Clamp x Hose Shank

| Size (in) | Crimp Fitting Part Number | Clamp Fitting Long Shank Part Number | Clamp Fitting Short Shank Part Number |
|-----------|---------------------------|--------------------------------------|---------------------------------------|
| 1         | TCS-SS100                 | BHAS-SS100                           | RHAS-SS100                            |
| 1 1/4     | —                         | BHAS-SS125                           | —                                     |
| 1 1/2     | TCS-SS150                 | BHAS-SS150                           | RHAS-SS150                            |
| 2         | TCS-SS200                 | BHAS-SS200                           | RHAS-SS200                            |
| 2 1/2     | TCS-SS250                 | —                                    | RHAS-SS250                            |
| 3         | TCS-SS300                 | BHAS-SS300                           | RHAS-SS300                            |
| 4         | TCS-SS400                 | BHAS-SS400                           | RHAS-SS400                            |
| 6         | —                         | —                                    | RHAS-SS600                            |



### Sanitary Clamps

| Size (in) | Single Pin Part Number | Double Pin Part Number | Bolted Part Number |
|-----------|------------------------|------------------------|--------------------|
| 1 & 1 1/2 | SPHDS150               | DPHDS150               | DBS150             |
| 2         | SPHDS200               | DPHDS200               | DBS200             |
| 2 1/2     | SPHDS250               | DPHDS250               | —                  |
| 3         | SPHDS300               | DPHDS300               | DBS300             |
| 4         | SPHDS400               | DPHDS400               | DBS400             |
| 6         | SPHDS600               | —                      | —                  |



### Sanitary SS316 Bevel Seat x Hose Shank

| Size (in) | Part Number |
|-----------|-------------|
| 1         | FBS-SS100   |
| 1 1/2     | FBS-SS150   |
| 2         | FBS-SS200   |
| 2 1/2     | FBS-SS250   |
| 3         | FBS-SS300   |
| 4         | FBS-SS400   |



### Sanitary Hex Nut (for FBS-SS Series)

| Size (in) | Part Number |
|-----------|-------------|
| 1         | HNS100      |
| 1 1/2     | HNS150      |
| 2         | HNS200      |
| 2 1/2     | HNS250      |
| 3         | HNS300      |
| 4         | HNS400      |

Because we continually examine ways to improve our products, we reserve the right to alter specifications or discontinue products without prior notice.



# AGRICULTURAL HOSE AND COUPLINGS

## Sanitary Gaskets

### Sanitary Buna-N Tri-Clamp Gasket Black

**Color Code:** ● (1 Red Dot)

**Certification:** 3A 18-03 sanitary standard

**Temperature Range:** -65°F (-54°C) to +210°F (+99°C)

| Part Number   | Size (in) | Weight Each (lbs) | Standard Carton |
|---------------|-----------|-------------------|-----------------|
| BUNA-40MPU100 | 1         | 0.012             | 25              |
| BUNA-40MPU150 | 1 1/2     | 0.013             | 25              |
| BUNA-40MPU200 | 2         | 0.014             | 25              |
| BUNA-40MPU250 | 2 1/2     | 0.018             | 25              |
| BUNA-40MPU300 | 3         | 0.020             | 25              |
| BUNA-40MPU400 | 4         | 0.030             | 25              |
| BUNA-40MPU600 | 6         | 0.040             | 25              |



### Sanitary Buna-N Tri-Clamp Gasket White

**Color Code:** ● (1 Red Dot)

**Certification:** 3A 18-03 sanitary standard

**Temperature Range:** -65°F (-54°C) to +210°F (+99°C)

| Part Number    | Size (in) | Weight Each (lbs) | Standard Carton |
|----------------|-----------|-------------------|-----------------|
| BUNA-40MPUW100 | 1         | 0.012             | 25              |
| BUNA-40MPUW150 | 1 1/2     | 0.013             | 25              |
| BUNA-40MPUW200 | 2         | 0.014             | 25              |
| BUNA-40MPUW250 | 2 1/2     | 0.018             | 25              |
| BUNA-40MPUW300 | 3         | 0.022             | 25              |
| BUNA-40MPUW400 | 4         | 0.034             | 25              |



### Sanitary EPDM Tri-Clamp Gasket Black

**Color Code:** ● ● ● (3 Green Dots)

**Certification:** 3A 18-03 sanitary standard

**Temperature Range:** -60°F (-51°C) to +300°F (+149°C)

| Part Number   | Size (in) | Weight Each (lbs) | Standard Carton |
|---------------|-----------|-------------------|-----------------|
| EPDM-40MPE100 | 1         | 0.012             | 25              |
| EPDM-40MPE150 | 1 1/2     | 0.013             | 25              |
| EPDM-40MPE200 | 2         | 0.014             | 25              |
| EPDM-40MPE250 | 2 1/2     | 0.016             | 25              |
| EPDM-40MPE300 | 3         | 0.020             | 25              |
| EPDM-40MPE400 | 4         | 0.030             | 25              |



### Sanitary FKM Tri-Clamp Gasket Black

**Color Code:** ○ ● (1 White/1 Yellow Dot)

**Certification:** 3A 18-03 sanitary standards

**Temperature Range:** -20°F (-29°C) to +350°F (+177°C)

| Part Number    | Size (in) | Weight Each (lbs) | Standard Carton |
|----------------|-----------|-------------------|-----------------|
| FKM-40MPSFY100 | 1         | 0.013             | 25              |
| FKM-40MPSFY150 | 1 1/2     | 0.014             | 25              |
| FKM-40MPSFY200 | 2         | 0.018             | 25              |
| FKM-40MPSFY300 | 3         | 0.030             | 25              |
| FKM-40MPSFY400 | 4         | 0.046             | 25              |



Because we continually examine ways to improve our products, we reserve the right to alter specifications or discontinue products without prior notice.

# AGRICULTURAL HOSE AND COUPLINGS

## Couplings



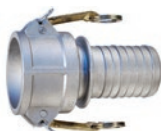
### Part A Male Adapter x Female NPT

| Size (in) | Aluminum Part Number | Polypropylene Part Number | Glass Reinforced Nylon Part Number |
|-----------|----------------------|---------------------------|------------------------------------|
| 1/2       | AL-A050              | PPA050                    | -                                  |
| 1         | AL-A100              | PPA100                    | GRA100                             |
| 1 1/2     | AL-A150              | PPA150                    | GRA150                             |
| 2         | AL-A200              | PPA200                    | GRA200                             |
| 3         | AL-A300              | PPA300                    | GRA300                             |
| 4         | AL-A400              | PPA400                    | GRA400                             |
| 6         | AL-A600              | -                         | -                                  |
| 8         | AL-A800              | -                         | -                                  |



### Part B Female Coupler x Male NPT

| Size (in) | Aluminum (brass handles) Part Number | Aluminum (stainless handles) Part Number | Polypropylene Part Number | Glass Reinforced Nylon Part Number |
|-----------|--------------------------------------|--|---------------------------|------------------------------------|
| 1/2       | AL-B050                              | -  | PPB050                    | -                                  |
| 1         | AL-B100                              | ALSH-B100                                | PPB100                    | GRB100                             |
| 1 1/2     | AL-B150                              | ALSH-B150                                | PPB150                    | GRB150                             |
| 2         | AL-B200                              | ALSH-B200                                | PPB200                    | GRB200                             |
| 3         | AL-B300                              | ALSH-B300                                | PPB300                    | GRB300                             |
| 4         | AL-B400                              | ALSH-B400                                | PPB400                    | GRB400                             |
| 6         | AL-B600                              | -  | -                         | -                                  |
| 8         | AL-B800                              | -  | -                         | -                                  |



### Part C Female Coupler x Hose Shank

| Size (in) | Aluminum (brass handles) Part Number | Aluminum (stainless handles) Part Number | Polypropylene Part Number | Glass Reinforced Nylon Part Number |
|-----------|--------------------------------------|--|---------------------------|------------------------------------|
| 1/2       | AL-C050                              | -  | PPC050                    | -                                  |
| 1         | AL-C100                              | ALSH-C100                                | PPC100                    | GRC100                             |
| 1 1/2     | AL-C150                              | ALSH-C150                                | PPC150                    | GRC150                             |
| 2         | AL-C200                              | ALSH-C200                                | PPC200                    | GRC200                             |
| 3         | AL-C300                              | ALSH-C300                                | PPC300                    | GRC300                             |
| 4         | AL-C400                              | ALSH-C400                                | PPC400                    | GRC400                             |
| 6         | AL-C600                              | -  | -                         | -                                  |
| 8         | AL-C800                              | -  | -                         | -                                  |

Because we continually examine ways to improve our products, we reserve the right to alter specifications or discontinue products without prior notice.

# AGRICULTURAL HOSE AND COUPLINGS

## Couplings



**Part D Female Coupler x Female NPT**

| Size (in) | Aluminum (brass handles) Part Number | Aluminum (stainless handles) Part Number | Polypropylene Part Number | Glass Reinforced Nylon Part Number |
|-----------|--------------------------------------|--|---------------------------|------------------------------------|
| 1/2       | AL-D050                              | -  | PPD050                    | -                                  |
| 1         | AL-D100                              | ALSH-D100                                | PPD100                    | GRD100                             |
| 1 1/2     | AL-D150                              | ALSH-D150                                | PPD150                    | GRD150                             |
| 2         | AL-D200                              | ALSH-D200                                | PPD200                    | GRD200                             |
| 3         | AL-D300                              | ALSH-D300                                | PPD300                    | GRD300                             |
| 4         | AL-D400                              | ALSH-D400                                | PPD400                    | GRD400                             |
| 6         | AL-D600                              | -  | -                         | -                                  |
| 8         | AL-D800                              | -  | -                         | -                                  |



**Part E Male Adapter x Hose Shank**

| Size (in) | Aluminum Part Number | Polypropylene Part Number | Glass Reinforced Nylon Part Number |
|-----------|----------------------|---------------------------|------------------------------------|
| 1/2       | AL-E050              | PPE050                    | -                                  |
| 1         | AL-E100              | PPE100                    | GRE100                             |
| 1 1/2     | AL-E150              | PPE150                    | GRE150                             |
| 2         | AL-E200              | PPE200                    | GRE200                             |
| 3         | AL-E300              | PPE300                    | GRE300                             |
| 4         | AL-E400              | PPE400                    | GRE400                             |
| 6         | AL-E600              | -                         | -                                  |
| 8         | AL-E800              | -                         | -                                  |



**Part F Male Adapter x Male NPT**

| Size (in) | Aluminum Part Number | Polypropylene Part Number | Glass Reinforced Nylon Part Number |
|-----------|----------------------|---------------------------|------------------------------------|
| 1/2       | AL-F050              | PPF050                    | -                                  |
| 1         | AL-F100              | PPF100                    | GRF100                             |
| 1 1/2     | AL-F150              | PPF150                    | GRF150                             |
| 2         | AL-F200              | PPF200                    | GRF200                             |
| 3         | AL-F300              | PPF300                    | GRF300                             |
| 4         | AL-F400              | PPF400                    | GRF400                             |
| 6         | AL-F600              | -                         | -                                  |
| 8         | AL-F800              | -                         | -                                  |

Because we continually examine ways to improve our products, we reserve the right to alter specifications or discontinue products without prior notice.

# AGRICULTURAL HOSE AND COUPLINGS

## Couplings & Valves



**Part DC Duct Cap**

| Size (in) | Aluminum (brass handles) Part Number | Aluminum (stainless handles) Part Number | Polypropylene Part Number | Glass Reinforced Nylon Part Number |
|-----------|--------------------------------------|--|---------------------------|------------------------------------|
| 1/2       | AL-DC050                             | -  | PPDC050                   | -                                  |
| 1         | AL-DC100                             | ALSH-DC100                               | PPDC100                   | GRDC100                            |
| 1 1/2     | AL-DC150                             | ALSH-DC150                               | PPDC150                   | GRDC150                            |
| 2         | AL-DC200                             | ALSH-DC200                               | PPDC200                   | GRDC200                            |
| 3         | AL-DC300                             | ALSH-DC300                               | PPDC300                   | GRDC300                            |
| 4         | AL-DC400                             | ALSH-DC400                               | PPDC400                   | GRDC400                            |
| 6         | AL-DC600                             | -  | -                         | -                                  |
| 8         | AL-DC800                             | -  | -                         | -                                  |



**Part DP Dust Plug**

| Size (in) | Aluminum Part Number | Polypropylene Part Number | Glass Reinforced Nylon Part Number |
|-----------|----------------------|---------------------------|------------------------------------|
| 1/2       | AL-DP050             | PPDP050                   | -                                  |
| 1         | AL-DP100             | PPDP100                   | GRDP100                            |
| 1 1/2     | AL-DP150             | PPDP150                   | GRDP150                            |
| 2         | AL-DP200             | PPDP200                   | GRDP200                            |
| 3         | AL-DP300             | PPDP300                   | GRDP300                            |
| 4         | AL-DP400             | PPDP400                   | GRDP400                            |
| 6         | AL-DP600             | -                         | -                                  |
| 8         | AL-DP800             | -                         | -                                  |



**Polypropylene Ball Valve 4-Bolt Design**

| Part Number | Size (in) | Weight Each (lbs) | Standard Carton |
|-------------|-----------|-------------------|-----------------|
| PPBV050     | 1/2       | 0.88              | 24              |
| PPBV075     | 3/4       | 0.85              | 24              |
| PPBV100     | 1         | 1.16              | 24              |
| PPBV125     | 1 1/4     | 1.65              | 24              |
| PPBV150     | 1 1/2     | 1.67              | 24              |



**Polypropylene Ball Valve 6-Bolt Design**

| Part Number | Size (in) | Weight Each (lbs) | Standard Carton |
|-------------|-----------|-------------------|-----------------|
| PPBV200     | 2         | 3.71              | 8               |
| PPBV300     | 3         | 6.60              | 6               |
| PPBV400     | 4         | 9.90              | 2               |

Because we continually examine ways to improve our products, we reserve the right to alter specifications or discontinue products without prior notice.

# AGRICULTURAL HOSE AND COUPLINGS

## EZ-Seal™ Leak Resistant Couplings

### Ideally Suited for Layflat Hoses

#### Applications:

- Agriculture • Chemicals • Petroleum • Construction
- Material handling

#### Construction:

- Aluminum; ASTM B85 Grade 383

#### Features & Benefits:

- Rubber seals - Help prevent leakage
- Interchangeability - Part C & E conform to Mil Spec A-A-59326
- Versatile - Suitable for use with other PVC and Rubber Hoses

**Note:** To insure proper sealing attach band clamps directly over rubber seals.



**Aluminum Part C Female Coupler x Hose Shank**

| Part Number | Size (in) | Weight Each (lbs) | Standard Carton |
|-------------|-----------|-------------------|-----------------|
| AL-CLF150   | 1 1/2     | 0.77              | 30              |
| AL-CLF200   | 2         | 0.98              | 40              |
| AL-CLF300   | 3         | 1.98              | 15              |
| AL-CLF400   | 4         | 2.87              | 15              |
| AL-CLF600   | 6         | 5.65              | 6               |



**Aluminum Part E Male Adapter x Hose Shank**

| Part Number | Size (in) | Weight Each (lbs) | Standard Carton |
|-------------|-----------|-------------------|-----------------|
| AL-ELF150   | 1 1/2     | 0.44              | 40              |
| AL-ELF200   | 2         | 0.64              | 50              |
| AL-ELF300   | 3         | 1.38              | 18              |
| AL-ELF400   | 4         | 2.51              | 20              |
| AL-ELF600   | 6         | 4.83              | 6               |



**Aluminum Pin Lug Hose Shank with Brass Swivel Nut Female End (NPSM Threads)**

| Part Number | Size (in) | Weight Each (lbs) | Standard Carton |
|-------------|-----------|-------------------|-----------------|
| ABF-LF150   | 1 1/2     | 0.37              | 150             |
| ABF-LF200   | 2         | 0.58              | 80              |
| ABF-LF300   | 3         | 1.16              | 24              |
| ABF-LF400   | 4         | 2.01              | 20              |



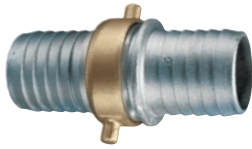
**Aluminum Pin Lug Hose Shank Male End (NPSM Threads)**

| Part Number | Size (in) | Weight Each (lbs) | Standard Carton |
|-------------|-----------|-------------------|-----------------|
| ABM-LF150   | 1 1/2     | 0.22              | 150             |
| ABM-LF200   | 2         | 0.40              | 80              |
| ABM-LF300   | 3         | 1.04              | 24              |
| ABM-LF400   | 4         | 1.48              | 20              |

Because we continually examine ways to improve our products, we reserve the right to alter specifications or discontinue products without prior notice.

# AGRICULTURAL HOSE AND COUPLINGS

## Pin Lug Hose Shank Couplings



**Aluminum Shank with Brass Swivel Nut Complete Set (NPSM Threads)**

| Part Number | Size (in) | Weight Each (lbs) | Standard Carton |
|-------------|-----------|-------------------|-----------------|
| AB150       | 1 1/2     | 0.56              | 75              |
| AB200       | 2         | 0.88              | 40              |
| AB250       | 2 1/2     | 1.34              | 18              |
| AB300       | 3         | 2.70              | 12              |
| AB400       | 4         | 4.42              | 10              |
| AB600       | 6         | 8.30              | 4               |



**Brass Shank with Brass Swivel Nut Complete Set (NPSM Threads)**

| Part Number | Size (in) | Weight Each (lbs) | Standard Carton |
|-------------|-----------|-------------------|-----------------|
| BB150       | 1 1/2     | 1.17              | 35              |
| BB200       | 2         | 1.98              | 30              |
| BB300       | 3         | 5.00              | 12              |
| BB400       | 4         | 9.38              | 6               |



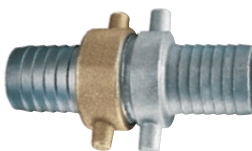
**Aluminum Shank Male (NPSM Threads)**

| Part Number | Size (in) | Weight Each (lbs) | Standard Carton |
|-------------|-----------|-------------------|-----------------|
| ABM150      | 1 1/2     | 0.18              | 150             |
| ABM200      | 2         | 0.25              | 80              |
| ABM250      | 2 1/2     | 0.40              | 36              |
| ABM300      | 3         | 1.04              | 24              |
| ABM400      | 4         | 1.70              | 20              |
| ABM600      | 6         | 3.04              | 8               |



**Aluminum Shank with Brass Swivel Nut Female (NPSM Threads)**

| Part Number | Size (in) | Weight Each (lbs) | Standard Carton |
|-------------|-----------|-------------------|-----------------|
| ABF150      | 1 1/2     | 0.38              | 150             |
| ABF200      | 2         | 0.62              | 80              |
| ABF250      | 2 1/2     | 0.94              | 36              |
| ABF300      | 3         | 1.66              | 24              |
| ABF400      | 4         | 2.72              | 20              |
| ABF600      | 6         | 5.26              | 8               |



**Aluminum Shank with Brass Swivel Nut Complete Set (NST Threads)**

| Part Number | Size (in) | Weight Each (lbs) | Standard Carton |
|-------------|-----------|-------------------|-----------------|
| FHNST150    | 1 1/2     | 0.43              | 40              |
| FHNST250    | 2 1/2     | 1.04              | 12              |



**Aluminum Shank with Brass Swivel Nut Female (NST Threads)**

| Part Number | Size (in) | Weight Each (lbs) | Standard Carton |
|-------------|-----------|-------------------|-----------------|
| FHNST-F150  | 1 1/2     | 0.29              | 150             |
| FHNST-F250  | 2 1/2     | 0.70              | 36              |

**PSI Rating @ 70°F (+21°C)**

|             |        |
|-------------|--------|
| 1/2" – 2"   | 75 PSI |
| 2 1/2" – 4" | 50 PSI |
| 6"          | 25 PSI |



**Aluminum Shank Male End (NST Threads)**

| Part Number | Size (in) | Weight Each (lbs) | Standard Carton |
|-------------|-----------|-------------------|-----------------|
| FHNST-M150  | 1 1/2     | 0.14              | 150             |
| FHNST-M250  | 2 1/2     | 0.34              | 36              |

Because we continually examine ways to improve our products, we reserve the right to alter specifications or discontinue products without prior notice.

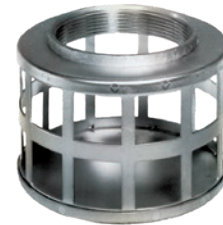
# AGRICULTURAL HOSE AND COUPLINGS

## Strainers



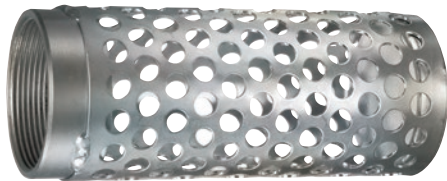
**Round Hole Zinc Plated Steel Strainer  
(NPSM Threads)**

| Part Number | Size (in) | Weight Each (lbs) | Standard Carton |
|-------------|-----------|-------------------|-----------------|
| RHS150      | 1 1/2     | 1.36              | 32              |
| RHS200      | 2         | 1.78              | 18              |
| RHS250      | 2 1/2     | 2.02              | 18              |
| RHS300      | 3         | 3.08              | 18              |
| RHS400      | 4         | 2.90              | 18              |
| RHS600      | 6         | 6.04              | 6               |
| RHS800      | 8         | 7.34              | 4               |
| RHS1000     | 10        | 26.50             | 1               |



**Square Hole Zinc Plated Steel Strainer  
(NPSM Threads)**

| Part Number | Size (in) | Weight Each (lbs) | Standard Carton |
|-------------|-----------|-------------------|-----------------|
| SHS150      | 1 1/2     | 1.12              | 32              |
| SHS200      | 2         | 1.74              | 18              |
| SHS300      | 3         | 2.50              | 18              |
| SHS400      | 4         | 2.52              | 18              |
| SHS600      | 6         | 6.32              | 6               |
| SHS800      | 8         | 7.34              | 4               |
| SHS1000     | 10        | 26.50             | 1               |



**Long Round Hole Zinc Plated Steel Strainer  
(NPSM Threads)**

| Part Number | Size (in) | Weight Each (lbs) | Standard Carton |
|-------------|-----------|-------------------|-----------------|
| LHS150      | 1 1/2     | 0.75              | 30              |
| LHS200      | 2         | 0.94              | 25              |
| LHS300      | 3         | 2.00              | 16              |



**Polypropylene Strainer  
(NPSM Threads)**

| Part Number | Size (in) | Weight Each (lbs) | Standard Carton |
|-------------|-----------|-------------------|-----------------|
| PPS150      | 1 1/2     | 0.25              | 18              |
| PPS200      | 2         | 0.30              | 18              |
| PPS300      | 3         | 0.65              | 12              |



**Top Hole Zinc Plated Steel Strainer  
(NPSM Threads)**

| Part Number | Size (in) | Weight Each (lbs) | Standard Carton |
|-------------|-----------|-------------------|-----------------|
| THS150      | 1 1/2     | 1.64              | 25              |
| THS200      | 2         | 2.00              | 20              |
| THS300      | 3         | 2.68              | 15              |



**Bottom Hole Zinc Plated Steel Strainer  
(NPSM Threads)**

| Part Number | Size (in) | Weight Each (lbs) | Standard Carton |
|-------------|-----------|-------------------|-----------------|
| BHS150      | 1 1/2     | 1.64              | 20              |
| BHS200      | 2         | 2.00              | 20              |
| BHS300      | 3         | 2.68              | 15              |

Because we continually examine ways to improve our products, we reserve the right to alter specifications or discontinue products without prior notice.

# AGRICULTURAL HOSE AND COUPLINGS

## Combination Hose Nipples



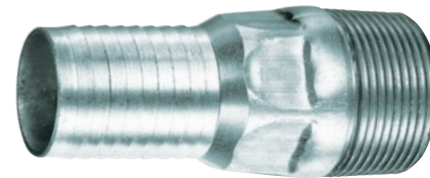
**Hose Nipple (Plain Steel) NPT Threads**

| Part Number | Size (in) | Weight Each (lbs) | Standard Carton |
|-------------|-----------|-------------------|-----------------|
| STN050      | 1/2       | 0.14              | 25              |
| STN075      | 3/4       | 0.22              | 25              |
| STN100      | 1         | 0.32              | 50              |
| STN125      | 1 1/4     | 0.56              | 20              |
| STN150      | 1 1/2     | 0.72              | 10              |
| STN200      | 2         | 1.10              | 40              |
| STN250      | 2 1/2     | 1.74              | 20              |
| STN300      | 3         | 2.18              | 12              |
| STN400      | 4         | 3.22              | 8               |
| STN500      | 5         | 4.12              | 4               |
| STN600      | 6         | 12.24             | 4               |



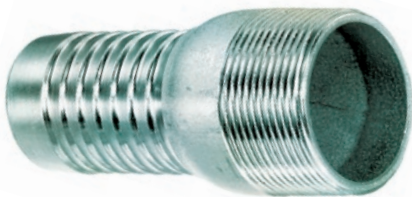
**Hose Nipple (Hex Plain Steel) NPT Threads**

| Part Number | Size (in) | Weight Each (lbs) | Standard Carton |
|-------------|-----------|-------------------|-----------------|
| HEX-STN050  | 1/2       | 0.14              | 25              |
| HEX-STN075  | 3/4       | 0.22              | 25              |
| HEX-STN100  | 1         | 0.32              | 50              |
| HEX-STN125  | 1 1/4     | 0.56              | 20              |



**Hose Nipple (Hex Zinc Plated Steel) NPT Threads**

| Part Number | Size (in) | Weight Each (lbs) | Standard Carton |
|-------------|-----------|-------------------|-----------------|
| HEX-SPN050  | 1/2       | 0.14              | 25              |
| HEX-SPN075  | 3/4       | 0.22              | 25              |
| HEX-SPN100  | 1         | 0.32              | 50              |
| HEX-SPN125  | 1 1/4     | 0.56              | 20              |



**Hose Nipple (Zinc Plated Steel) NPT Threads**

| Part Number | Size (in) | Weight Each (lbs) | Standard Carton |
|-------------|-----------|-------------------|-----------------|
| SPN050      | 1/2       | 0.14              | 25              |
| SPN075      | 3/4       | 0.22              | 25              |
| SPN100      | 1         | 0.32              | 50              |
| SPN125      | 1 1/4     | 0.56              | 20              |
| SPN150      | 1 1/2     | 0.72              | 10              |
| SPN200      | 2         | 1.10              | 40              |
| SPN250      | 2 1/2     | 1.74              | 20              |
| SPN300      | 3         | 2.18              | 12              |
| SPN400      | 4         | 3.22              | 8               |
| SPN600      | 6         | 12.24             | 4               |
| SPN800      | 8         | 16.44             | 2               |
| SPN1000     | 10        | 21.78             | 1               |
| SPN1200     | 12        | 33.18             | 1               |



**Hose Nipple (Zinc Plated Steel) Grooved End**

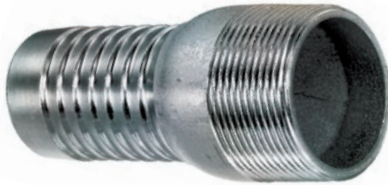
| Part Number | Size (in) | Weight Each (lbs) | Standard Carton |
|-------------|-----------|-------------------|-----------------|
| GEN100      | 1         | 0.58              | 100             |
| GEN125      | 1 1/4     | 0.62              | 80              |
| GEN150      | 1 1/2     | 0.86              | 60              |
| GEN200      | 2         | 1.28              | 50              |
| GEN250      | 2 1/2     | 2.03              | 20              |
| GEN300      | 3         | 3.17              | 20              |
| GEN400      | 4         | 3.88              | 12              |
| GEN600      | 6         | 14.60             | 4               |
| GEN800      | 8         | 19.73             | 2               |
| GEN1000     | 10        | 26.14             | 1               |
| GEN1200     | 12        | 39.82             | 1               |

Because we continually examine ways to improve our products, we reserve the right to alter specifications or discontinue products without prior notice.



# AGRICULTURAL HOSE AND COUPLINGS

## Combination Hose Nipples



**Hose Nipple (304 Stainless) NPT Threads**

| Part Number | Size (in) | Weight Each (lbs) | Standard Carton |
|-------------|-----------|-------------------|-----------------|
| SSN304-050  | 1/2       | 0.18              | 25              |
| SSN304-075  | 3/4       | 0.26              | 25              |
| SSN304-100  | 1         | 0.35              | 50              |
| SSN304-125  | 1 1/4     | 0.55              | 20              |
| SSN304-150  | 1 1/2     | 0.66              | 10              |
| SSN304-200  | 2         | 1.16              | 40              |
| SSN304-250  | 2 1/2     | 1.31              | 20              |
| SSN304-300  | 3         | 2.20              | 12              |
| SSN304-400  | 4         | 3.31              | 8               |
| SSN304-500  | 5         | 8.82              | 4               |
| SSN304-600  | 6         | 11.02             | 4               |



**Hose Nipple (316 Stainless) NPT Threads**

| Part Number | Size (in) | Weight Each (lbs) | Standard Carton |
|-------------|-----------|-------------------|-----------------|
| SSN050      | 1/2       | 0.18              | 25              |
| SSN075      | 3/4       | 0.26              | 25              |
| SSN100      | 1         | 0.35              | 50              |
| SSN125      | 1 1/4     | 0.55              | 20              |
| SSN150      | 1 1/2     | 0.66              | 10              |
| SSN200      | 2         | 1.16              | 40              |
| SSN250      | 2 1/2     | 1.31              | 20              |
| SSN300      | 3         | 2.20              | 12              |
| SSN400      | 4         | 3.31              | 8               |
| SSN500      | 5         | 8.82              | 4               |
| SSN600      | 6         | 11.02             | 4               |



**Hose Nipple (Polypropylene) NPT Threads**

| Part Number | Size (in) | Weight Each (lbs) | Standard Carton |
|-------------|-----------|-------------------|-----------------|
| PPN050      | 1/2       | 0.03              | 400             |
| PPN075      | 3/4       | 0.06              | 200             |
| PPN100      | 1         | 0.07              | 100             |
| PPN125      | 1 1/4     | 0.11              | 80              |
| PPN150      | 1 1/2     | 0.13              | 60              |
| PPN200      | 2         | 0.22              | 40              |
| PPN300      | 3         | 0.55              | 12              |



**Hose Nipple (Glass Reinforced Nylon) NPT Threads**

| Part Number | Size (in) | Weight Each (lbs) | Standard Carton |
|-------------|-----------|-------------------|-----------------|
| GRN050      | 1/2       | 0.03              | 400             |
| GRN075      | 3/4       | 0.06              | 200             |
| GRN100      | 1         | 0.07              | 100             |
| GRN125      | 1 1/4     | 0.11              | 80              |
| GRN150      | 1 1/2     | 0.13              | 60              |
| GRN200      | 2         | 0.22              | 40              |
| GRN300      | 3         | 0.55              | 12              |
| GRN400      | 4         | 0.80              | 12              |

### PSI Rating @ 70°F (+21°C)

| Material   | Size Range    | PSI Rating |
|--|---------------|------------|
| Steel, Plated Steel, Stainless Steel Polypropylene | 1/2" – 1 1/2" | 125 psi    |
|  | 2" – 6"       | 75 psi     |
|  | 8" – 12"      | 50 psi     |

| Material               | Size Range | PSI Rating |
|------------------------|------------|------------|
| Glass Reinforced Nylon | 1/2" – 2"  | 150 psi    |
|                        | 3"         | 125 psi    |
|                        | 4"         | 75 psi     |

Because we continually examine ways to improve our products, we reserve the right to alter specifications or discontinue products without prior notice.

# AGRICULTURAL HOSE AND COUPLINGS

## Hose Clamps



**Zinc Plated Carbon Steel Spiral Double Bolt Clamp  
(For Counterclockwise Spiral Hoses) Designed for  
Corrugated Tigerflex™ Hoses**

| Part Number | Size (in) | Torque (ft lbs) | Weight Each (lbs) | Standard Carton |
|-------------|-----------|-----------------|-------------------|-----------------|
| SDBC-1.5    | 1 1/2     | 6               | 0.18              | 100             |
| SDBC-2      | 2         | 6               | 0.36              | 100             |
| SDBC-2.25   | 2 1/4     | 6               | 0.40              | 100             |
| SDBC-2.5    | 2 1/2     | 8               | 0.48              | 100             |
| SDBC-3      | 3         | 8               | 0.66              | 70              |
| SDBC-3.5    | 3 1/2     | 8               | 0.70              | 70              |
| SDBC-4      | 4         | 24              | 1.02              | 40              |
| SDBC-5      | 5         | 24              | 1.76              | 30              |
| SDBC-6      | 6         | 30              | 2.00              | 20              |
| SDBC-8      | 8         | 30              | 2.76              | 10              |
| SDBC-10     | 10        | 30              | 3.46              | 10              |
| SDBC-12     | 12        | 30              | 4.14              | 10              |



**Stainless Steel 304 Spiral Double Bolt Clamp  
(For Counterclockwise Spiral Hoses)  
Designed for Corrugated Tigerflex™ Hoses**

| Part Number | Size (in) | Torque (ft lbs) | Weight Each (lbs) | Standard Carton |
|-------------|-----------|-----------------|-------------------|-----------------|
| SDBC-SS-1.5 | 1 1/2     | 6               | 0.20              | 100             |
| SDBC-SS-2   | 2         | 6               | 0.40              | 100             |
| SDBC-SS-2.5 | 2 1/2     | 6               | 0.53              | 70              |
| SDBC-SS-3   | 3         | 8               | 0.73              | 70              |
| SDBC-SS-3.5 | 3 1/2     | 8               | 0.77              | 40              |
| SDBC-SS-4   | 4         | 24              | 1.12              | 40              |
| SDBC-SS-5   | 5         | 24              | 1.94              | 30              |
| SDBC-SS-6   | 6         | 30              | 2.20              | 20              |
| SDBC-SS-8   | 8         | 30              | 3.04              | 10              |
| SDBC-SS-10  | 10        | 30              | 3.81              | 10              |
| SDBC-SS-12  | 12        | 30              | 4.55              | 10              |



**Bridge Clamp for Tigerflex™ Ducting Hoses  
300 Stainless Worm Gear Band  
(Designed For Counterclockwise Spiral Hoses)**

| Part Number | Size (in) | Size Range (in) | Weight Each (lbs) | Standard Carton |
|-------------|-----------|-----------------|-------------------|-----------------|
| DCLPL250    | 2 1/2     | 2 3/8 - 2 3/4   | 0.086             | 200             |
| DCLPL300    | 3         | 2 7/8 - 3 3/8   | 0.093             | 200             |
| DCLPL400    | 4         | 3 1/2 - 4 1/2   | 0.130             | 200             |
| DCLPL500    | 5         | 4 3/8 - 5 1/4   | 0.143             | 200             |
| DCLPL600    | 6         | 5 1/4 - 6 1/4   | 0.167             | 200             |
| DCLPL700    | 7         | 6 1/4 - 7 1/4   | 0.175             | 200             |
| DCLPL800    | 8         | 7 3/8 - 8 3/8   | 0.207             | 100             |
| DCLPL1000   | 10        | 9 1/4 - 10 1/4  | 0.242             | 100             |
| DCLPL1200   | 12        | 11 1/4 - 12 1/4 | 0.284             | 100             |



**Bridge Clamp for Flexair™ Ducting Hoses  
300 Stainless Worm Gear Band  
(Designed For Clockwise Spiral Hoses)**

| Part Number | Size (in) | Size Range (in) | Weight Each (lbs) | Standard Carton |
|-------------|-----------|-----------------|-------------------|-----------------|
| DCLPR250    | 2 1/2     | 2 3/8 - 2 3/4   | 0.086             | 200             |
| DCLPR300    | 3         | 2 7/8 - 3 3/8   | 0.093             | 200             |
| DCLPR400    | 4         | 3 1/2 - 4 1/2   | 0.130             | 200             |
| DCLPR500    | 5         | 3 1/2 - 4 1/2   | 0.143             | 200             |
| DCLPR600    | 6         | 4 1/4 - 5 1/4   | 0.167             | 200             |
| DCLPR700    | 7         | 5 1/4 - 6 1/4   | 0.175             | 200             |
| DCLPR800    | 8         | 7 3/8 - 8 3/8   | 0.207             | 100             |
| DCLPR1000   | 10        | 9 1/4 - 10 1/4  | 0.242             | 100             |
| DCLPR1200   | 12        | 11 1/4 - 12 1/4 | 0.284             | 100             |

Because we continually examine ways to improve our products, we reserve the right to alter specifications or discontinue products without prior notice.

# AGRICULTURAL HOSE AND COUPLINGS

## Hose Clamps

### Kuri-Clamp™ Standard Duty Worm Gear Clamp

Stainless Steel Band & Housing with Carbon Steel Screw



| Part Number | Size Range (in) | Pieces Per Box | Band Width (in) | Torque Rating (in/lbs) | Weight Per Box (lbs) |
|-------------|-----------------|----------------|-----------------|------------------------|----------------------|
| WGC-CS06    | 7/16 - 25/32    | 10             | 1/2             | 25-37                  | 0.60                 |
| WGC-CS08    | 1/2 - 29/32     | 10             | 1/2             | 25-37                  | 0.60                 |
| WGC-CS10    | 9/16 - 1 1/16   | 10             | 1/2             | 25-37                  | 0.60                 |
| WGC-CS12    | 11/16 - 1 1/4   | 10             | 1/2             | 25-37                  | 0.60                 |
| WGC-CS16    | 13/16 - 1 1/2   | 10             | 1/2             | 25-37                  | 0.70                 |
| WGC-CS20    | 13/16 - 1 3/4   | 10             | 1/2             | 25-37                  | 0.70                 |
| WGC-CS24    | 1 1/16 - 2      | 10             | 1/2             | 25-37                  | 0.80                 |
| WGC-CS28    | 1 5/16 - 2 1/4  | 10             | 1/2             | 25-37                  | 0.80                 |
| WGC-CS32    | 1 9/16 - 2 1/2  | 10             | 1/2             | 25-37                  | 0.80                 |
| WGC-CS36    | 1 13/16 - 2 3/4 | 10             | 1/2             | 25-37                  | 0.90                 |
| WGC-CS40    | 2 1/16 - 3      | 10             | 1/2             | 25-37                  | 0.90                 |
| WGC-CS44    | 2 5/16 - 3 1/4  | 10             | 1/2             | 25-37                  | 0.90                 |
| WGC-CS48    | 2 9/16 - 3 1/2  | 10             | 1/2             | 25-37                  | 1.00                 |
| WGC-CS52    | 2 13/16 - 3 3/4 | 10             | 1/2             | 25-37                  | 1.10                 |
| WGC-CS56    | 3 1/16 - 4      | 10             | 1/2             | 25-37                  | 1.10                 |
| WGC-CS60    | 3 5/16 - 4 1/4  | 10             | 1/2             | 25-37                  | 1.20                 |
| WGC-CS64    | 3 9/16 - 4 1/2  | 10             | 1/2             | 25-37                  | 1.20                 |
| WGC-CS72    | 1 7/8 - 5       | 10             | 1/2             | 25-37                  | 1.30                 |
| WGC-CS80    | 2 1/2 - 5 1/2   | 10             | 1/2             | 25-37                  | 1.40                 |
| WGC-CS88    | 3 1/8 - 6       | 10             | 1/2             | 25-37                  | 1.40                 |
| WGC-CS96    | 3 5/8 - 6 1/2   | 10             | 1/2             | 25-37                  | 1.50                 |
| WGC-CS104   | 4 1/8 - 7       | 10             | 1/2             | 25-37                  | 1.50                 |

\* CLAMPS ONLY SOLD IN BOX QUANTITIES

### Kuri-Clamp™ Standard Duty Worm Gear Clamp

Stainless Steel Band, Housing, & Screw



| Part Number | Size Range (in) | Pieces Per Box | Band Width (in) | Torque Rating (in/lbs) | Weight Per Box (lbs) |
|-------------|-----------------|----------------|-----------------|------------------------|----------------------|
| WGC-SS06    | 7/16 - 25/32    | 10             | 1/2             | 30-45                  | 0.60                 |
| WGC-SS08    | 1/2 - 29/32     | 10             | 1/2             | 30-45                  | 0.60                 |
| WGC-SS10    | 9/16 - 1 1/16   | 10             | 1/2             | 30-45                  | 0.60                 |
| WGC-SS12    | 11/16 - 1 1/4   | 10             | 1/2             | 30-45                  | 0.60                 |
| WGC-SS16    | 13/16 - 1 1/2   | 10             | 1/2             | 30-45                  | 0.70                 |
| WGC-SS20    | 13/16 - 1 3/4   | 10             | 1/2             | 30-45                  | 0.70                 |
| WGC-SS24    | 1 1/16 - 2      | 10             | 1/2             | 30-45                  | 0.80                 |
| WGC-SS28    | 1 5/16 - 2 1/4  | 10             | 1/2             | 30-45                  | 0.80                 |
| WGC-SS32    | 1 9/16 - 2 1/2  | 10             | 1/2             | 30-45                  | 0.80                 |
| WGC-SS36    | 1 13/16 - 2 3/4 | 10             | 1/2             | 30-45                  | 0.90                 |
| WGC-SS40    | 2 1/16 - 3      | 10             | 1/2             | 30-45                  | 0.90                 |
| WGC-SS44    | 2 5/16 - 3 1/4  | 10             | 1/2             | 30-45                  | 0.90                 |
| WGC-SS48    | 2 9/16 - 3 1/2  | 10             | 1/2             | 30-45                  | 1.00                 |
| WGC-SS52    | 2 13/16 - 3 3/4 | 10             | 1/2             | 30-45                  | 1.10                 |
| WGC-SS56    | 3 1/16 - 4      | 10             | 1/2             | 30-45                  | 1.10                 |
| WGC-SS60    | 3 5/16 - 4 1/4  | 10             | 1/2             | 30-45                  | 1.20                 |
| WGC-SS64    | 3 9/16 - 4 1/2  | 10             | 1/2             | 30-45                  | 1.20                 |
| WGC-SS72    | 1 7/8 - 5       | 10             | 1/2             | 30-45                  | 1.30                 |
| WGC-SS80    | 2 1/2 - 5 1/2   | 10             | 1/2             | 30-45                  | 1.40                 |
| WGC-SS88    | 3 1/8 - 6       | 10             | 1/2             | 30-45                  | 1.40                 |
| WGC-SS96    | 3 5/8 - 6 1/2   | 10             | 1/2             | 30-45                  | 1.50                 |
| WGC-SS104   | 4 1/8 - 7       | 10             | 1/2             | 30-45                  | 1.50                 |

\* CLAMPS ONLY SOLD IN BOX QUANTITIES

### Kuri-Clamp™ Mini Worm Gear Clamp

Stainless Steel Band & Housing with Carbon Steel Screw

| Part Number | Size Range (in) | Pieces Per Box | Band Width (in) | Torque Rating (in/lbs) | Weight Per Box (lbs) |
|-------------|-----------------|----------------|-----------------|------------------------|----------------------|
| WGC-MCS04   | 7/32 - 5/8      | 10             | 5/16            | 10-15                  | 0.20                 |
| WGC-MCS06   | 7/16 - 25/32    | 10             | 5/16            | 10-15                  | 0.20                 |
| WGC-MCS08   | 1/2 - 29/32     | 10             | 5/16            | 10-15                  | 0.20                 |
| WGC-MCS10   | 9/16 - 1 1/16   | 10             | 5/16            | 10-15                  | 0.20                 |
| WGC-MCS12   | 11/16 - 1 1/4   | 10             | 5/16            | 10-15                  | 0.30                 |

\* CLAMPS ONLY SOLD IN BOX QUANTITIES

### Kuri-Clamp™ Mini Worm Gear Clamp

Stainless Steel Band, Housing, & Screw

| Part Number | Size Range (in) | Pieces Per Box | Band Width (in) | Torque Rating (in/lbs) | Weight Per Box (lbs) |
|-------------|-----------------|----------------|-----------------|------------------------|----------------------|
| WGC-MSS04   | 7/32 - 5/8      | 10             | 5/16            | 10-15                  | 0.20                 |
| WGC-MSS06   | 7/16 - 25/32    | 10             | 5/16            | 10-15                  | 0.20                 |
| WGC-MSS08   | 1/2 - 29/32     | 10             | 5/16            | 10-15                  | 0.20                 |
| WGC-MSS10   | 9/16 - 1 1/16   | 10             | 5/16            | 10-15                  | 0.20                 |
| WGC-MSS12   | 11/16 - 1 1/4   | 10             | 5/16            | 10-15                  | 0.30                 |

\* CLAMPS ONLY SOLD IN BOX QUANTITIES

Because we continually examine ways to improve our products, we reserve the right to alter specifications or discontinue products without prior notice.

# AGRICULTURAL HOSE AND COUPLINGS

## Hose Clamps



### Galvanized Carbon Steel Center Punch Clamp

| Part Number | Size (in) | Pieces Per Box | Band Width (in) | Weight Per Box (lbs) | Standard Box |
|-------------|-----------|----------------|-----------------|----------------------|--------------|
| CPCS03      | 13/16     | 100            | 3/8             | 3.60                 | 1            |
| CPCS31      | 1 3/8     | 100            | 3/8             | 4.60                 | 1            |
| CPCS04      | 1         | 100            | 5/8             | 8.30                 | 1            |
| CPCS05      | 1 1/4     | 100            | 5/8             | 8.70                 | 1            |
| CPCS06      | 1 1/2     | 100            | 5/8             | 9.70                 | 1            |
| CPCS07      | 1 3/4     | 100            | 5/8             | 10.60                | 1            |
| CPCS08      | 2         | 100            | 5/8             | 11.50                | 1            |
| CPCS09      | 2 1/4     | 100            | 5/8             | 12.60                | 1            |
| CPCS10      | 2 1/2     | 50             | 5/8             | 6.80                 | 1            |
| CPCS11      | 2 3/4     | 50             | 5/8             | 7.30                 | 1            |
| CPCS12      | 3         | 50             | 5/8             | 7.70                 | 1            |
| CPCS14      | 3 1/2     | 50             | 5/8             | 8.70                 | 1            |
| CPCS16      | 4         | 25             | 5/8             | 4.90                 | 1            |
| CPCS18      | 4 1/2     | 25             | 5/8             | 5.50                 | 1            |
| CPCS20      | 5         | 25             | 5/8             | 5.90                 | 1            |
| CPCS24      | 6         | 25             | 5/8             | 6.80                 | 1            |
| CPCS26      | 6 1/2     | 25             | 5/8             | 7.10                 | 1            |
| CPCS28      | 7         | 25             | 5/8             | 7.40                 | 1            |
| CPCS32      | 8         | 25             | 5/8             | 8.20                 | 1            |

\*CLAMPS ARE SOLD IN BOX QUANTITIES ONLY.

### 201 Stainless Steel Center Punch Clamp

| Part Number | Size (in) | Pieces Per Box | Band Width (in) | Weight Per Box (lbs) | Standard Box |
|-------------|-----------|----------------|-----------------|----------------------|--------------|
| CPSS03      | 13/16     | 100            | 3/8             | 3.60                 | 1            |
| CPSS31      | 1 3/8     | 100            | 3/8             | 4.60                 | 1            |
| CPSS04      | 1         | 100            | 5/8             | 8.30                 | 1            |
| CPSS05      | 1 1/4     | 100            | 5/8             | 8.70                 | 1            |
| CPSS06      | 1 1/2     | 100            | 5/8             | 9.70                 | 1            |
| CPSS07      | 1 3/4     | 100            | 5/8             | 10.60                | 1            |
| CPSS08      | 2         | 100            | 5/8             | 11.50                | 1            |
| CPSS09      | 2 1/4     | 100            | 5/8             | 12.60                | 1            |
| CPSS10      | 2 1/2     | 50             | 5/8             | 6.80                 | 1            |
| CPSS11      | 2 3/4     | 50             | 5/8             | 7.30                 | 1            |
| CPSS12      | 3         | 50             | 5/8             | 7.70                 | 1            |
| CPSS14      | 3 1/2     | 50             | 5/8             | 8.70                 | 1            |
| CPSS16      | 4         | 25             | 5/8             | 4.90                 | 1            |
| CPSS18      | 4 1/2     | 25             | 5/8             | 5.50                 | 1            |
| CPSS20      | 5         | 25             | 5/8             | 5.90                 | 1            |
| CPSS24      | 6         | 25             | 5/8             | 6.80                 | 1            |
| CPSS26      | 6 1/2     | 25             | 5/8             | 7.10                 | 1            |
| CPSS28      | 7         | 25             | 5/8             | 7.40                 | 1            |
| CPSS32      | 8         | 25             | 5/8             | 8.20                 | 1            |

\*CLAMPS ARE SOLD IN BOX QUANTITIES ONLY.

Because we continually examine ways to improve our products, we reserve the right to alter specifications or discontinue products without prior notice.

# AGRICULTURAL HOSE AND COUPLINGS

## Ferrules

### CRF-SS Series

#### Kuri-Crimp™ 304 Stainless Steel Crimp Ferrules

- Designed for use with TCS-SS, FBS-SS, FILS-SS and TES-SS series fittings



| Part Number | Hose ID (in) | Ferrule ID (in) | Wall Thickness (in) | Length (in) | Weight Each (lbs) | Standard Carton |
|-------------|--------------|-----------------|---------------------|-------------|-------------------|-----------------|
| CRF-SS10108 | 1            | 1.50            | 0.059               | 2.29        | 0.20              | 200             |
| CRF-SS10109 | 1            | 1.56            | 0.059               | 2.29        | 0.21              | 200             |
| CRF-SS10110 | 1            | 1.63            | 0.059               | 2.29        | 0.21              | 200             |
| CRF-SS10111 | 1            | 1.69            | 0.059               | 2.29        | 0.23              | 200             |
| CRF-SS10112 | 1            | 1.75            | 0.059               | 2.29        | 0.23              | 200             |
| CRF-SS10113 | 1            | 1.81            | 0.059               | 2.29        | 0.24              | 200             |
| CRF-SS15200 | 1 1/2        | 2.00            | 0.059               | 2.36        | 0.27              | 128             |
| CRF-SS15202 | 1 1/2        | 2.12            | 0.059               | 2.36        | 0.29              | 128             |
| CRF-SS15204 | 1 1/2        | 2.25            | 0.059               | 2.36        | 0.29              | 80              |
| CRF-SS15206 | 1 1/2        | 2.39            | 0.059               | 2.36        | 0.30              | 80              |
| CRF-SS15208 | 1 1/2        | 2.50            | 0.059               | 2.36        | 0.35              | 80              |
| CRF-SS20209 | 2            | 2.56            | 0.059               | 2.79        | 0.40              | 80              |
| CRF-SS20210 | 2            | 2.62            | 0.059               | 2.79        | 0.43              | 80              |
| CRF-SS20211 | 2            | 2.68            | 0.059               | 2.79        | 0.43              | 80              |
| CRF-SS20213 | 2            | 2.81            | 0.059               | 2.79        | 0.44              | 80              |
| CRF-SS20215 | 2            | 2.94            | 0.059               | 2.79        | 0.46              | 80              |
| CRF-SS25302 | 2 1/2        | 3.12            | 0.059               | 3.11        | 0.56              | 60              |
| CRF-SS25304 | 2 1/2        | 3.25            | 0.059               | 3.11        | 0.58              | 60              |
| CRF-SS25306 | 2 1/2        | 3.39            | 0.059               | 3.11        | 0.60              | 60              |
| CRF-SS25308 | 2 1/2        | 3.50            | 0.059               | 3.11        | 0.62              | 60              |
| CRF-SS30309 | 3            | 3.56            | 0.098               | 3.94        | 1.27              | 40              |
| CRF-SS30310 | 3            | 3.62            | 0.098               | 3.94        | 1.29              | 40              |
| CRF-SS30312 | 3            | 3.75            | 0.098               | 3.94        | 1.31              | 40              |
| CRF-SS30313 | 3            | 3.81            | 0.098               | 3.94        | 1.33              | 40              |
| CRF-SS30315 | 3            | 3.94            | 0.098               | 3.94        | 1.36              | 40              |
| CRF-SS30400 | 3            | 4.00            | 0.098               | 3.94        | 1.40              | 40              |
| CRF-SS40409 | 4            | 4.56            | 0.098               | 4.19        | 1.57              | 30              |
| CRF-SS40410 | 4            | 4.63            | 0.098               | 4.19        | 1.59              | 30              |
| CRF-SS40411 | 4            | 4.68            | 0.098               | 4.19        | 1.74              | 30              |
| CRF-SS40412 | 4            | 4.75            | 0.098               | 4.19        | 1.76              | 30              |
| CRF-SS40413 | 4            | 4.81            | 0.098               | 4.19        | 1.78              | 30              |
| CRF-SS40414 | 4            | 4.88            | 0.098               | 4.19        | 1.82              | 30              |
| CRF-SS40500 | 4            | 5.00            | 0.098               | 4.19        | 1.86              | 30              |
| CRF-SS40501 | 4            | 5.06            | 0.098               | 4.19        | 1.89              | 30              |

Because we continually examine ways to improve our products, we reserve the right to alter specifications or discontinue products without prior notice.

# AGRICULTURAL HOSE AND COUPLINGS

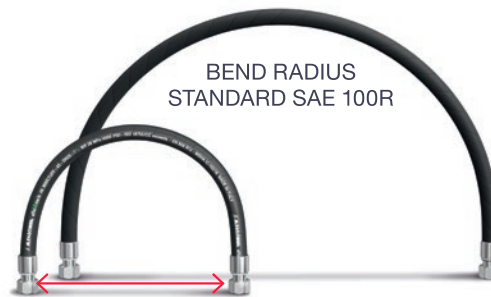
## Hydraulic Hoses and Accessories

**ALFAGOMMA**<sup>®</sup>

**alfabiotech**

### NEW EXTRA FLEXIBLE BIO OIL RESISTANT HOSE RANGE

- Specially designed for bio oil full compatibility
- Extreme flexibility: up to 50% better bend radius compared to SAE 100R series
- Minetuff cover for top abrasion & ozone resistance
- MSHA-approved fire resistant cover



BEND RADIUS: REDUCED UP TO 50%

### Alfabiotech 3000 - Minetuff - ABT3K Alfabiotech 4000 - Minetuff - ABT4K

**NEW**



**ABT3K & ABT4K - 4 wire spiral**  
Exceeds SAE 100R12 sizes 3/4" through 2"  
ISO 18752/CC all sizes  
1 million impulse tested  
Meets flame resistance acceptance designation US MSHA IC-152/16

### Nominal Specifications

| Series Number | Size Code | Nominal ID |      | Nominal OD |      | Max Working Pressure (psi) | Min. Bend. Radius |      | Weight (lbs/ft) | Coupling Recommendations |                                       |
|---------------|-----------|------------|------|------------|------|----------------------------|-------------------|------|-----------------|--------------------------|---------------------------------------|
|               |           | (in)       | (mm) | (in)       | (mm) |                            | (in)              | (mm) |                 | AlfaCrimp One-Piece      | Two-Piece Couplings Ferrule Non-Skive |
| ABT4K         | 06        | 3/8        | 10   | 0.79       | 20.1 | 4000                       | 3.0               | 75   | 0.55            | D                        | AF4                                   |
| ABT4K         | 08        | 1/2        | 13   | 0.91       | 23.0 | 4000                       | 3.5               | 90   | 0.75            | D                        | AF4                                   |
| ABT4K         | 10        | 5/8        | 16   | 1.04       | 26.3 | 4000                       | 5.5               | 140  | 0.58            | D                        | AF4                                   |
| ABT4K         | 12        | 3/4        | 19.0 | 1.16       | 29.5 | 4000                       | 4.7               | 120  | 0.83            | D                        | AF4                                   |
| ABT4K         | 16        | 1          | 25.4 | 1.48       | 37.5 | 4000                       | 5.9               | 150  | 1.10            | D                        | AF4                                   |
| ABT3K         | 20        | 1 1/4      | 31.8 | 1.80       | 45.7 | 3000                       | 10.0              | 230  | 1.51            | D                        | AF4                                   |
| ABT3K         | 24        | 1 1/2      | 38.1 | 2.04       | 51.8 | 3000                       | 16.5              | 420  | 1.86            | D                        | AF4                                   |
| ABT3K         | 32        | 2          | 50.8 | 2.63       | 66.8 | 3000                       | 20.9              | 530  | 2.69            | D                        | AF4                                   |

Because we continually examine ways to improve our products, we reserve the right to alter specifications or discontinue products without prior notice.

# AGRICULTURAL HOSE AND COUPLINGS

## Hydraulic Hoses and Accessories

### Single wire braid hydraulic hose on easy-to-handle reels – TR1MT - MINETUFF

**NEW**

**TR1MT – Single wire braid**  
 Meets or exceeds  
 ISO 1436-1 - SAE 100 R1AT/R1S  
 EN 853 1SN  
 MSHA IC-152/16 approved



### Nominal Specifications

| Series Number | Size Code | Nominal ID |      | Nominal OD |      | Max Working <sup>†</sup> Pressure (psi) | Min. Bend. Radius |      | Weight (lbs/ft) | Coupling Recommendations |  |     |
|---------------|-----------|------------|------|------------|------|---|-------------------|------|-----------------|--------------------------|--|-----|
|               |           | (in)       | (mm) | (in)       | (mm) |   | (in)              | (mm) |                 | AlfaCrimp One-Piece      | Two-Piece Couplings<br>Ferrule Non-Skive |     |
| TR1MT         | 04        | 1/4        | 6    | 0.51       | 13.0 | 3250                                    | 4.0               | 100  | 0.13            | B                        | AF1                                      |     |
| TR1MT         | 05        | 5/16       | 8    | 0.57       | 14.5 | 3120                                    | 4.6               | 115  | 0.16            | B                        | AF1                                      |     |
| TR1MT         | 06        | 3/8        | 10   | 0.68       | 17.2 | 2610                                    | 5.2               | 130  | 0.20            | B                        | AF1                                      |     |
| TR1MT         | 08        | 1/2        | 13   | 0.79       | 20.1 | 2320                                    | 7.2               | 180  | 0.25            | B                        | AF1                                      |     |
| TR1MT         | 10        | 5/8        | 16   | 0.91       | 23.1 | 1900                                    | 8.0               | 200  | 0.28            | B                        | AF1                                      |     |
| TR1MT         | 12        | 3/4        | 19   | 1.07       | 27.3 | 1530                                    | 9.6               | 240  | 0.38            | B                        | AF1                                      |     |
| TR1MT         | 16        | 1          | 25   | 1.39       | 35.2 | 1280                                    | 12.0              | 300  | 0.58            | B                        | AF1                                      |     |
| TR1MT         | 20        | 1 1/4      | 32   | 1.67       | 42.5 | 920                                     | 16.8              | 420  | 0.74            |                          | D  | AF1 |
| TR1MT         | 24        | 1 1/2      | 38   | 1.96       | 49.7 | 730                                     | 20.0              | 500  | 0.89            |                          | D  | AF1 |
| TR1MT         | 32        | 2          | 51   | 2.48       | 62.9 | 600                                     | 25.2              | 630  | 1.23            |                          | D  | AF1 |

Because we continually examine ways to improve our products, we reserve the right to alter specifications or discontinue products without prior notice.

# AGRICULTURAL HOSE AND COUPLINGS

## Hydraulic Hoses and Accessories

### Double wire braid hydraulic hose on easy-to-handle reels –TR2MT - MINETUFF

**NEW**

#### TR2MT – Double wire braid

Meets or exceeds  
SAE 100 R2AT  
ISO 1436-1 - SAE 100 R2AT/R2S  
EN 853 2SN MSHA IC-152/16 approved



### Nominal Specifications

| Series Number | Size Code | Nominal ID |      | Nominal OD |      | Max Working Pressure (psi) | Min. Bend. Radius |      | Weight (lbs/ft) | Coupling Recommendations |                                       |     |
|---------------|-----------|------------|------|------------|------|----------------------------|-------------------|------|-----------------|--------------------------|---------------------------------------|-----|
|               |           | (in)       | (mm) | (in)       | (mm) |                            | (in)              | (mm) |                 | AlfaCrimp One-Piece      | Two-Piece Couplings Ferrule Non-Skive |     |
| TR2MT         | 04        | 1/4        | 6    | 0.57       | 14.5 | 5850                       | 4.0               | 100  | 0.22            | B                        | AF2                                   |     |
| TR2MT         | 05        | 5/16       | 8    | 0.63       | 16.1 | 5000                       | 4.6               | 115  | 0.23            | B                        | AF2                                   |     |
| TR2MT         | 06        | 3/8        | 10   | 0.73       | 18.5 | 4800                       | 5.0               | 125  | 0.31            | B                        | AF2                                   |     |
| TR2MT         | 08        | 1/2        | 13   | 0.84       | 21.4 | 4000                       | 7.0               | 175  | 0.36            | B                        | D                                     | AF2 |
| TR2MT         | 10        | 5/8        | 16   | 0.97       | 24.6 | 3630                       | 8.0               | 200  | 0.45            | B                        | D                                     | AF2 |
| TR2MT         | 12        | 3/4        | 19   | 1.14       | 29.0 | 3120                       | 9.6               | 240  | 0.57            | B                        | D                                     | AF2 |
| TR2MT         | 16        | 1          | 25   | 1.45       | 36.8 | 2400                       | 12.0              | 300  | 0.84            | B                        | D                                     | AF2 |
| TR2MT         | 20        | 1 1/4      | 32   | 1.83       | 46.4 | 1820                       | 16.8              | 420  | 1.03            |                          | D                                     | AF2 |
| TR2MT         | 24        | 1 1/2      | 38   | 2.11       | 53.7 | 1310                       | 20.0              | 500  | 1.36            |                          | D                                     | AF2 |
| TR2MT         | 32        | 2          | 51   | 2.59       | 65.9 | 1200                       | 25.2              | 630  | 1.85            |                          | D                                     | AF2 |

Because we continually examine ways to improve our products, we reserve the right to alter specifications or discontinue products without prior notice.



# AGRICULTURAL HOSE AND COUPLINGS

## Hydraulic Hoses and Accessories

Single wire braid light weight cleaning hose on easy-to-handle reels – TAJ3BK/TAJ3BU



TAJ3BK (Black) –  
Single wire braid



TAJ3BU (Blue) –  
Single wire braid

### Nominal Specifications

| Series Number | Size Code | Nominal ID |      | Nominal OD |      | Max Working Pressure (psi) | Min. Bend. Radius |      | Weight (lbs/ft) | Coupling Recommendations |                                       |     |
|---------------|-----------|------------|------|------------|------|----------------------------|-------------------|------|-----------------|--------------------------|---------------------------------------|-----|
|               |           | (in)       | (mm) | (in)       | (mm) |                            | (in)              | (mm) |                 | AlfaCrimp One-Piece      | Two-Piece Couplings Ferrule Non-Skive |     |
| TAJ3BK        | 04        | 1/4        | 6.4  | 0.48       | 12.1 | 3000                       | 2.0               | 50   | 0.11            | B                        |                                       | AF1 |
| TAJ3BK        | 05        | 5/16       | 7.9  | 0.56       | 14.1 | 3000                       | 2.4               | 60   | 0.13            | B                        |                                       | AF1 |
| TAJ3BK        | 06        | 3/8        | 9.5  | 0.61       | 15.6 | 3000                       | 2.6               | 65   | 0.17            | B                        |                                       | AF1 |
| TAJ3BK        | 08        | 1/2        | 12.7 | 0.77       | 19.5 | 3000                       | 3.6               | 90   | 0.27            | B                        |                                       | AF1 |
| TAJ3BU        | 04        | 1/4        | 6.4  | 0.48       | 12.1 | 3000                       | 2.0               | 50   | 0.11            | B                        |                                       | AF1 |
| TAJ3BU        | 05        | 5/16       | 7.9  | 0.56       | 14.1 | 3000                       | 2.4               | 60   | 0.13            | B                        |                                       | AF1 |
| TAJ3BU        | 06        | 3/8        | 9.5  | 0.61       | 15.6 | 3000                       | 2.6               | 65   | 0.17            | B                        |                                       | AF1 |
| TAJ3BU        | 08        | 1/2        | 12.7 | 0.77       | 19.5 | 3000                       | 3.6               | 90   | 0.27            | B                        |                                       | AF1 |

Because we continually examine ways to improve our products, we reserve the right to alter specifications or discontinue products without prior notice.

# AGRICULTURAL HOSE AND COUPLINGS

## Hydraulic Hoses and Accessories

### Double wire braid light weight cleaning hose on easy-to-handle reels – TAJ5BK/TAJ5BU

TAJ5BK (Black) –  
Double wire braid



TAJ5BU (Blue) –  
Double wire braid



### Nominal Specifications

| Series Number | Size Code | Nominal ID |      | Nominal OD |      | Max Working Pressure (psi) | Min. Bend. Radius |      | Weight (lbs/ft) | Coupling Recommendations |                                       |
|---------------|-----------|------------|------|------------|------|----------------------------|-------------------|------|-----------------|--------------------------|---------------------------------------|
|               |           | (in)       | (mm) | (in)       | (mm) |                            | (in)              | (mm) |                 | AlfaCrimp One-Piece      | Two-Piece Couplings Ferrule Non-Skive |
| TAJ5BK        | 04        | 1/4        | 6.4  | 0.53       | 13.4 | 5850                       | 2.8               | 70   | 0.18            | B                        | AF1                                   |
| TAJ5BK        | 05        | 5/16       | 7.9  | 0.59       | 15.0 | 5850                       | 3.0               | 76   | 0.21            | B                        | AF1                                   |
| TAJ5BK        | 06        | 3/8        | 9.5  | 0.69       | 17.4 | 5850                       | 3.6               | 90   | 0.27            | B                        | AF1                                   |
| TAJ5BK        | 08        | 1/2        | 12.7 | 0.81       | 20.6 | 5850                       | 4.6               | 115  | 0.36            | B                        | AF1                                   |
| TAJ5BU        | 04        | 1/4        | 6.4  | 0.53       | 13.4 | 5850                       | 2.8               | 70   | 0.18            | B                        | AF1                                   |
| TAJ5BU        | 05        | 5/16       | 7.9  | 0.59       | 15.0 | 5850                       | 3.0               | 76   | 0.21            | B                        | AF1                                   |
| TAJ5BU        | 06        | 3/8        | 9.5  | 0.69       | 17.4 | 5850                       | 3.6               | 90   | 0.27            | B                        | AF1                                   |
| TAJ5BU        | 08        | 1/2        | 12.7 | 0.81       | 20.6 | 5850                       | 4.6               | 115  | 0.36            | B                        | AF1                                   |

Because we continually examine ways to improve our products, we reserve the right to alter specifications or discontinue products without prior notice.

# AGRICULTURAL HOSE AND COUPLINGS

## Hydraulic Hoses and Accessories

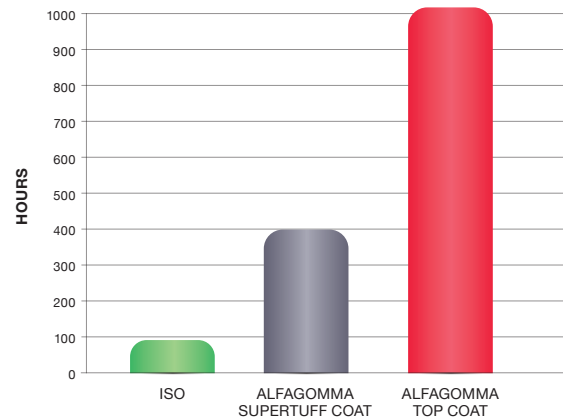
# ALFAGOMMA®

# TOP COAT

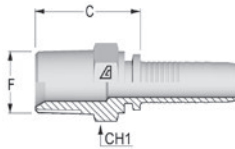
## ALFAGOMMA TOP COAT OVER 10 TIMES HIGHER THAN STANDARD

- Tested in accordance with ASTM B117-03 and UNI ISO 9927 standards
- Over 500 hours corrosion prevention in salt spray fog to white rust
- More than 1000 hours corrosion resistance to red rust

Resistance to red rust in salt fog  
(test in compliance with ISO 9227)



## Inserts for two-piece fittings – US End Configurations



## NPTF Solid Male 60° Seat

| Part Number | Dash Size | Hose ID Size |      | F Thread  |               | C Cut-Off Factor (mm) | Hex Dia. CH1 (mm) | Weight Each (lbs) |
|-------------|-----------|--------------|------|-----------|---------------|-----------------------|-------------------|-------------------|
|             |           | (in)         | (mm) | Dash Size | Size (in TPI) |                       |                   |                   |
| A-0302-MNPT | 03        | 3/16         | 4.8  | 02        | 1/8-27        | 19.8                  | 12                | 0.03              |
| A-0402-MNPT | 04        | 1/4          | 6.4  | 02        | 1/8-27        | 21.3                  | 14                | 0.04              |
| A-0404-MNPT | 04        | 1/4          | 6.4  | 04        | 1/4-18        | 26.8                  | 17                | 0.06              |
| A-0406-MNPT | 04        | 1/4          | 6.4  | 06        | 3/8-18        | 27.8                  | 19                | 0.08              |
| A-0504-MNPT | 05        | 5/16         | 7.9  | 04        | 1/4-18        | 26.8                  | 17                | 0.07              |
| A-0506-MNPT | 05        | 5/16         | 7.9  | 06        | 3/8-18        | 27.8                  | 19                | 0.11              |
| A-0604-MNPT | 06        | 3/8          | 9.5  | 04        | 1/4-18        | 26.8                  | 17                | 0.07              |
| A-0606-MNPT | 06        | 3/8          | 9.5  | 06        | 3/8-18        | 27.8                  | 19                | 0.09              |
| A-0608-MNPT | 06        | 3/8          | 9.5  | 08        | 1/2-14        | 31.3                  | 22                | 0.15              |
| A-0806-MNPT | 08        | 1/2          | 12.7 | 06        | 3/8-18        | 28.6                  | 19                | 0.12              |
| A-0808-MNPT | 08        | 1/2          | 12.7 | 08        | 1/2-14        | 32.1                  | 22                | 0.17              |
| A-0812-MNPT | 08        | 1/2          | 12.7 | 12        | 3/4-14        | 34.1                  | 27                | 0.22              |
| A-1012-MNPT | 10        | 5/8          | 15.9 | 12        | 3/4-14        | 34.1                  | 27                | 0.24              |
| A-1212-MNPT | 12        | 3/4          | 19.0 | 12        | 3/4-14        | 34.6                  | 27                | 0.26              |

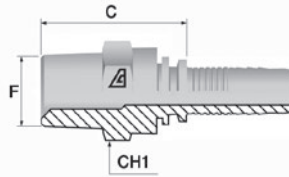
Larger sizes available, please download the Kuriyama Connections Hydraulic catalog at [www.kuriyama.com](http://www.kuriyama.com) or contact Kuriyama at 847-755-0360

Because we continually examine ways to improve our products, we reserve the right to alter specifications or discontinue products without prior notice.

# AGRICULTURAL HOSE AND COUPLINGS

## Hydraulic Hoses and Accessories

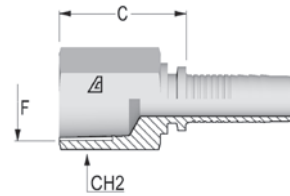
### Inserts for two-piece fittings – US End Configurations



### NPTF Male Swivel 60° Seat

| Part Number | Dash Size | Hose ID Size |      | F Thread  |               | C Cut-Off Factor (mm) | Hex Dia. CH1 (mm) | Weight Each (lbs) |
|-------------|-----------|--------------|------|-----------|---------------|-----------------------|-------------------|-------------------|
|             |           | (in)         | (mm) | Dash Size | Size (in TPI) |                       |                   |                   |
| A-0404-MNPS | 04        | 1/4          | 6.4  | 04        | 1/4-18        | 37.6                  | 17                | 0.09              |
| A-0604-MNPS | 06        | 3/8          | 9.5  | 04        | 1/4-18        | 39.6                  | 17                | 0.12              |
| A-0606-MNPS | 06        | 3/8          | 9.5  | 06        | 3/8-18        | 37.5                  | 22                | 0.15              |
| A-0806-MNPS | 08        | 1/2          | 12.7 | 06        | 3/8-18        | 38.3                  | 22                | 0.17              |
| A-0808-MNPS | 08        | 1/2          | 12.7 | 08        | 1/2-14        | 42.3                  | 25                | 0.25              |
| A-1212-MNPS | 12        | 3/4          | 19.0 | 12        | 3/4-14        | 50.1                  | 32                | 0.31              |

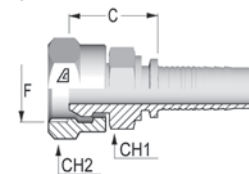
Larger sizes available, please download the Kuriyama Connections Hydraulic catalog at [www.kuriyama.com](http://www.kuriyama.com) or contact Kuriyama at 847-755-0360



### NPTF Solid Female Rigid

| Part Number | Dash Size | Hose ID Size |      | F Thread  |               | C Cut-Off Factor (mm) | Hex Dia. CH1 (mm) | Weight Each (lbs) |
|-------------|-----------|--------------|------|-----------|---------------|-----------------------|-------------------|-------------------|
|             |           | (in)         | (mm) | Dash Size | Size (in TPI) |                       |                   |                   |
| A-0404-FNPR | 04        | 1/4          | 6.4  | 04        | 1/4-18        | 27.8                  | 19                | 0.10              |
| A-0606-FNPR | 06        | 3/8          | 9.5  | 06        | 3/8-18        | 28.8                  | 22                | 0.17              |
| A-0808-FNPR | 08        | 1/2          | 12.7 | 08        | 1/2-14        | 35.6                  | 25                | 0.20              |
| A-1212-FNPR | 12        | 3/4          | 19.0 | 12        | 3/4-14        | 38.1                  | 32                | 0.35              |

Larger sizes available, please download the Kuriyama Connections Hydraulic catalog at [www.kuriyama.com](http://www.kuriyama.com) or contact Kuriyama at 847-755-0360



### NPSM Female Swivel 60° Seat

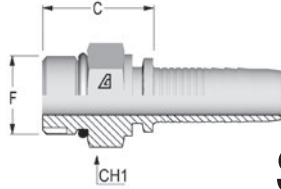
| Part Number | Dash Size | Hose ID Size |      | F Thread  |               | C Cut-Off Factor (mm) | Hex Dia. CH1 (mm) | Hex Dia. CH2 (mm) | Weight Each (lbs) |
|-------------|-----------|--------------|------|-----------|---------------|-----------------------|-------------------|-------------------|-------------------|
|             |           | (in)         | (mm) | Dash Size | Size (in TPI) |                       |                   |                   |                   |
| A-0404-FPMS | 04        | 1/4          | 6.4  | 04        | 1/4-18        | 24.3                  | 17                | 19                | 0.09              |
| A-0606-FPMS | 06        | 3/8          | 9.5  | 06        | 3/8-18        | 24.8                  | 19                | 22                | 0.14              |
| A-0808-FPMS | 08        | 1/2          | 12.7 | 08        | 1/2-14        | 26.6                  | 22                | 27                | 0.22              |

Larger sizes available, please download the Kuriyama Connections Hydraulic catalog at [www.kuriyama.com](http://www.kuriyama.com) or contact Kuriyama at 847-755-0360

Because we continually examine ways to improve our products, we reserve the right to alter specifications or discontinue products without prior notice.

# AGRICULTURAL HOSE AND COUPLINGS

## Hydraulic Hoses and Accessories

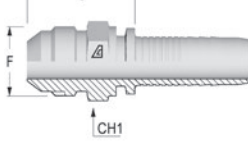


### SAE Solid Male O-Ring Boss

| Part Number | Dash Size | Hose ID Size |      | F Thread  |               | C Cut-Off Factor (mm) | Hex Dia. CH1 (mm) | Weight Each (lbs) |
|-------------|-----------|--------------|------|-----------|---------------|-----------------------|-------------------|-------------------|
|             |           | (in)         | (mm) | Dash Size | Size (in TPI) |                       |                   |                   |
| A-0404-MORB | 04        | 1/4          | 6.4  | 04        | 7/16-20       | 20.3                  | 14                | 0.04              |
| A-0405-MORB | 04        | 1/4          | 6.4  | 05        | 1/2-20        | 21.3                  | 16                | 0.05              |
| A-0406-MORB | 04        | 1/4          | 6.4  | 06        | 9/16-18       | 22.3                  | 17                | 0.06              |
| A-0606-MORB | 06        | 3/8          | 9.5  | 06        | 9/16-18       | 23.3                  | 19                | 0.08              |
| A-0608-MORB | 06        | 3/8          | 9.5  | 08        | 3/4-16        | 24.3                  | 22                | 0.12              |
| A-0610-MORB | 06        | 3/8          | 9.5  | 10        | 7/8-14        | 26.8                  | 27                | 0.16              |
| A-0808-MORB | 08        | 1/2          | 12.7 | 08        | 3/4-16        | 25.1                  | 22                | 0.14              |
| A-0810-MORB | 08        | 1/2          | 12.7 | 10        | 7/8-14        | 27.6                  | 27                | 0.19              |
| A-0812-MORB | 08        | 1/2          | 12.7 | 12        | 1 1/16-12     | 32.1                  | 32                | 0.28              |
| A-1210-MORB | 12        | 3/4          | 19.0 | 10        | 7/8-14        | 28.1                  | 27                | 0.24              |
| A-1212-MORB | 12        | 3/4          | 19.0 | 12        | 1 1/16-12     | 32.6                  | 32                | 0.31              |
| A-1216-MORB | 12        | 3/4          | 19.0 | 16        | 1 5/16-12     | 35.7                  | 38                | 0.44              |

Larger sizes available, please download the Kuriyama Connections Hydraulic catalog at [www.kuriyama.com](http://www.kuriyama.com) or contact Kuriyama at 847-755-0360

### Inserts for two-piece fittings – US End Configurations



### JIC Solid Male 37° Seat

| Part Number | Dash Size | Hose ID Size |      | F Thread  |               | C Cut-Off Factor (mm) | Hex Dia. CH1 (mm) | Weight Each (lbs) |
|-------------|-----------|--------------|------|-----------|---------------|-----------------------|-------------------|-------------------|
|             |           | (in)         | (mm) | Dash Size | Size (in TPI) |                       |                   |                   |
| A-0404-MJIC | 04        | 1/4          | 6.4  | 04        | 7/16-20       | 25.3                  | 12                | 0.04              |
| A-0405-MJIC | 04        | 1/4          | 6.4  | 05        | 1/2-20        | 25.3                  | 14                | 0.05              |
| A-0406-MJIC | 04        | 1/4          | 6.4  | 06        | 9/16-18       | 26.3                  | 17                | 0.06              |
| A-0505-MJIC | 05        | 5/16         | 7.9  | 05        | 1/2-20        | 25.3                  | 14                | 0.05              |
| A-0506-MJIC | 05        | 5/16         | 7.9  | 06        | 9/16-18       | 26.3                  | 17                | 0.07              |
| A-0606-MJIC | 06        | 3/8          | 9.5  | 06        | 9/16-18       | 26.3                  | 17                | 0.07              |
| A-0608-MJIC | 06        | 3/8          | 9.5  | 08        | 3/4-16        | 29.8                  | 19                | 0.11              |
| A-0808-MJIC | 08        | 1/2          | 12.7 | 08        | 3/4-16        | 29.8                  | 19                | 0.12              |
| A-0810-MJIC | 08        | 1/2          | 12.7 | 10        | 7/8-14        | 34.6                  | 24                | 0.19              |
| A-0812-MJIC | 08        | 1/2          | 12.7 | 12        | 1 1/16-12     | 37.1                  | 27                | 0.23              |
| A-1212-MJIC | 12        | 3/4          | 19.0 | 12        | 1 1/16-12     | 37.6                  | 27                | 0.27              |
| A-1214-MJIC | 12        | 3/4          | 19.0 | 14        | 1 3/16-12     | 40.1                  | 32                | 0.36              |
| A-1216-MJIC | 12        | 3/4          | 19.0 | 16        | 1 5/16-12     | 42.6                  | 36                | 0.54              |

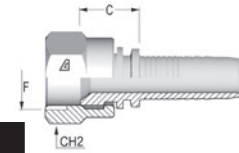
Larger sizes available, please download the Kuriyama Connections Hydraulic catalog at [www.kuriyama.com](http://www.kuriyama.com) or contact Kuriyama at 847-755-0360

Because we continually examine ways to improve our products, we reserve the right to alter specifications or discontinue products without prior notice.

# AGRICULTURAL HOSE AND COUPLINGS

## Hydraulic Hoses and Accessories

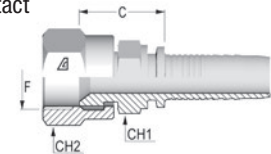
### JIC Female 37° Seat



| Part Number | Dash Size | Hose ID Size |      | F Thread  |               | C Cut-Off Factor (mm) | Hex Dia. CH2 (mm) | Weight Each (lbs) |
|-------------|-----------|--------------|------|-----------|---------------|-----------------------|-------------------|-------------------|
|             |           | (in)         | (mm) | Dash Size | Size (in TPI) |                       |                   |                   |
| A-0304-FJSH | 03        | 3/16         | 4.8  | 04        | 7/16-20       | 14.3                  | 16                | 0.04              |
| A-0404-FJSH | 04        | 1/4          | 6.4  | 04        | 7/16-20       | 14.6                  | 16                | 0.04              |
| A-0405-FJSH | 04        | 1/4          | 6.4  | 05        | 1/2-20        | 15.3                  | 17                | 0.06              |
| A-0406-FJSH | 04        | 1/4          | 6.4  | 06        | 9/16-18       | 15.3                  | 19                | 0.07              |
| A-0505-FJSH | 05        | 5/16         | 7.9  | 05        | 1/2-20        | 15.3                  | 17                | 0.07              |
| A-0506-FJSH | 05        | 5/16         | 7.9  | 06        | 9/16-18       | 15.3                  | 19                | 0.08              |
| A-0606-FJSH | 06        | 3/8          | 9.5  | 06        | 9/16-18       | 15.3                  | 19                | 0.08              |
| A-0608-FJSH | 06        | 3/8          | 9.5  | 08        | 3/4-16        | 17.8                  | 25                | 0.14              |
| A-0808-FJSH | 08        | 1/2          | 12.7 | 08        | 3/4-16        | 18.6                  | 25                | 0.16              |
| A-0810-FJSH | 08        | 1/2          | 12.7 | 10        | 7/8-14        | 19.6                  | 27                | 0.19              |
| A-0812-FJSH | 08        | 1/2          | 12.7 | 12        | 1 1/16-12     | 22.1                  | 32                | 0.25              |
| A-1210-FJSH | 12        | 3/4          | 19.0 | 10        | 7/8-14        | 20.0                  | 27                | 0.28              |
| A-1212-FJSH | 12        | 3/4          | 19.0 | 12        | 1 1/16-12     | 20.0                  | 32                | 0.28              |
| A-1214-FJSH | 12        | 3/4          | 19.0 | 14        | 1 3/16-12     | 20.0                  | 36                | 0.33              |
| A-1216-FJSH | 12        | 3/4          | 19.0 | 16        | 1 5/16-12     | 22.1                  | 38                | 0.38              |

Larger sizes available, please download the Kuriyama Connections Hydraulic catalog at [www.kuriyama.com](http://www.kuriyama.com) or contact Kuriyama at 847-755-0360

### JIC Female 37° Seat – Double Hex



| Part Number | Dash Size | Hose ID Size |      | F Thread  |               | C Cut-Off Factor (mm) | Hex Dia. CH1 (mm) | Hex Dia. CH2 (mm) | Weight Each (lbs) |
|-------------|-----------|--------------|------|-----------|---------------|-----------------------|-------------------|-------------------|-------------------|
|             |           | (in)         | (mm) | Dash Size | Size (in TPI) |                       |                   |                   |                   |
| A-0404-FJDH | 04        | 1/4          | 6.4  | 04        | 7/16-20       | 19.6                  | 14                | 16                | 0.06              |
| A-0405-FJDH | 04        | 1/4          | 6.4  | 05        | 1/2-20        | 20.3                  | 14                | 17                | 0.07              |
| A-0406-FJDH | 04        | 1/4          | 6.4  | 06        | 9/16-18       | 20.3                  | 14                | 19                | 0.09              |
| A-0506-FJDH | 05        | 5/16         | 7.9  | 06        | 9/16-18       | 20.3                  | 14                | 19                | 0.08              |
| A-0606-FJDH | 06        | 3/8          | 9.5  | 06        | 9/16-18       | 21.3                  | 17                | 19                | 0.10              |
| A-0608-FJDH | 06        | 3/8          | 9.5  | 08        | 3/4-16        | 24.8                  | 19                | 25                | 0.17              |
| A-0610-FJDH | 06        | 3/8          | 9.5  | 10        | 7/8-14        | 25.8                  | 22                | 22                | 0.20              |
| A-0806-FJDH | 08        | 1/2          | 12.7 | 06        | 9/16-18       | 23.1                  | 19                | 19                | 0.15              |
| A-0808-FJDH | 08        | 1/2          | 12.7 | 08        | 3/4-16        | 25.6                  | 19                | 25                | 0.20              |
| A-0810-FJDH | 08        | 1/2          | 12.7 | 10        | 7/8-14        | 26.6                  | 22                | 27                | 0.22              |
| A-0812-FJDH | 08        | 1/2          | 12.7 | 12        | 1 1/16-12     | 28.1                  | 25                | 32                | 0.30              |
| A-1210-FJDH | 12        | 3/4          | 19.0 | 10        | 7/8-14        | 28.1                  | 27                | 32                | 0.31              |
| A-1212-FJDH | 12        | 3/4          | 19.0 | 12        | 1 1/16-12     | 28.6                  | 27                | 32                | 0.35              |
| A-1214-FJDH | 12        | 3/4          | 19.0 | 14        | 1 3/16-12     | 29.9                  | 32                | 36                | 0.44              |
| A-1216-FJDH | 12        | 3/4          | 19.0 | 16        | 1 5/16-12     | 32.1                  | 32                | 38                | 0.49              |

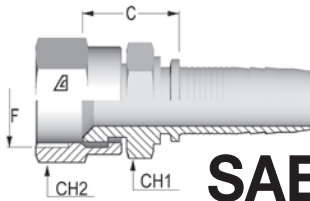
Larger sizes available, please download the Kuriyama Connections Hydraulic catalog at [www.kuriyama.com](http://www.kuriyama.com) or contact Kuriyama at 847-755-0360

Because we continually examine ways to improve our products, we reserve the right to alter specifications or discontinue products without prior notice.

# AGRICULTURAL HOSE AND COUPLINGS

## Hydraulic Hoses and Accessories

### Inserts for two-piece fittings – US End Configurations



### SAE Female 45° Seat – Double Hex

| Part Number | Dash Size | Hose ID Size |      | F Thread  |               | C Cut-Off Factor (mm) | Hex Dia. CH1 (mm) | Hex Dia. CH2 (mm) | Weight Each (lbs) |
|-------------|-----------|--------------|------|-----------|---------------|-----------------------|-------------------|-------------------|-------------------|
|             |           | (in)         | (mm) | Dash Size | Size (in TPI) |                       |                   |                   |                   |
| A-0606-FSAE | 06        | 3/8          | 9.5  | 06        | 5/8-18        | 22.3                  | 19                | 22                | 0.14              |
| A-1212-FSAE | 12        | 3/4          | 19.0 | 12        | 1 1/16-14     | 29.6                  | 27                | 32                | 0.35              |

Larger sizes available, please download the Kuriyama Connections Hydraulic catalog at [www.kuriyama.com](http://www.kuriyama.com) or contact Kuriyama at 847-755-0360

## Quick Release Couplings

For fast and easy connections of hydraulic hoses, the ALFAGOMMA® range of fluid components includes the ARGUS series of quick disconnect couplings, with products complying to international standards ISO 7241-1 A & B, ISO 5675 and ISO 16028, having poppet and flat face valve respectively.

### TOP COAT TREATMENT

Thanks to the exclusive ALFAGOMMA® **TOP COAT** – Galvanic Coating – proprietary technology, the complete range of ARGUS Quick release couplings can boast an extraordinary wear and corrosion resistance, so as to guarantee a longer lifespan to your system.

Because we continually examine ways to improve our products, we reserve the right to alter specifications or discontinue products without prior notice.

# AGRICULTURAL HOSE AND COUPLINGS

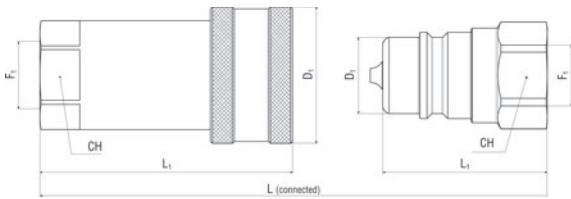
## Quick Release Couplings

### Poppet Valve

**QP**

POPPET INDUSTRY STANDARD ISO 5675

AG INTERCHANGE



#### INDUSTRY STANDARD - POPPET QP

Female coupling - Female thread

| Item Code     | ⊗    |      |     | Working Pressure<br>psi | Burst Pressure<br>psi | Thread 1 | F1       | D1<br>mm | CH<br>mm | L1<br>mm | L<br>mm |
|---------------|------|------|-----|-------------------------|-----------------------|----------|----------|----------|----------|----------|---------|
|               | Dash | mm   | in  |                         |                       |          |          |          |          |          |         |
| QPF-0404-FNPR | 04   | 6.0  | 1/4 | 5075                    | 20300                 | NPTF     | 1/4-18   | 27.6     | 19.0     | 53.5     | 72.00   |
| QPF-0606-FNPR | 06   | 10.0 | 3/8 | 3915                    | 15660                 | NPTF     | 3/8-18   | 34.0     | 24.0     | 63.0     | 83.00   |
| QAF-0808-FNPR | 08   | 13.0 | 1/2 | 3915                    | 15660                 | NPTF     | 1/2-14   | 38.5     | 27.0     | 66.0     | 88.20   |
| QPF-1212-FNPR | 12   | 19.0 | 3/4 | 2900                    | 11600                 | NPTF     | 3/4-14   | 48.2     | 34.0     | 82.5     | 108.00  |
| QPF-1616-FNPR | 16   | 25.0 | 1   | 2900                    | 11600                 | NPTF     | 1-11 1/2 | 56.5     | 41.0     | 96.5     | 127.00  |

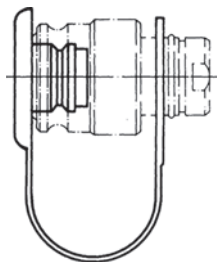
Other threads available. Please consult factory.

#### INDUSTRY STANDARD - POPPET QP

Male coupling - Female thread

| Item Code     | ⊗    |      |     | Working Pressure<br>psi | Burst Pressure<br>psi | Thread 1 | F1       | D1<br>mm | CH<br>mm | L1<br>mm | L<br>mm |
|---------------|------|------|-----|-------------------------|-----------------------|----------|----------|----------|----------|----------|---------|
|               | Dash | mm   | in  |                         |                       |          |          |          |          |          |         |
| QPM-0404-FNPR | 04   | 6.0  | 1/4 | 5075                    | 20300                 | NPTF     | 1/4-18   | 14.1     | 19.0     | 36.0     | 72.00   |
| QPM-0606-FNPR | 06   | 10.0 | 3/8 | 3915                    | 15660                 | NPTF     | 3/8-18   | 18.9     | 24.0     | 40.0     | 83.00   |
| QAM-0808-FNPR | 08   | 13.0 | 1/2 | 3915                    | 15660                 | NPTF     | 1/2-14   | 20.5     | 27.0     | 44.0     | 88.20   |
| QPM-1212-FNPR | 12   | 19.0 | 3/4 | 2900                    | 11600                 | NPTF     | 3/4-14   | 27.9     | 34.0     | 49.0     | 108.00  |
| QPM-1616-FNPR | 16   | 25.0 | 1   | 2900                    | 11600                 | NPTF     | 1-11 1/2 | 31.3     | 41.0     | 64.0     | 127.00  |

Other threads available. Please consult factory.



#### INDUSTRY STANDARD - POPPET QP and BALL QT

Dust plug for female coupling

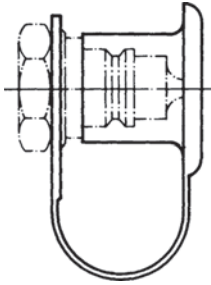
| Item Code | Color | Material | ⊗    |      |     |
|-----------|-------|----------|------|------|-----|
|           |       |          | Dash | mm   | in  |
| QPP-04    | RED   | PE       | 04   | 6.0  | 1/4 |
| QPP-06    | RED   | PE       | 06   | 10.0 | 3/8 |
| QAP-08    | RED   | PE       | 08   | 13.0 | 1/2 |
| QPP-12    | RED   | PE       | 12   | 19.0 | 3/4 |
| QPP-16    | RED   | PE       | 16   | 25.0 | 1   |

Because we continually examine ways to improve our products, we reserve the right to alter specifications or discontinue products without prior notice.



# AGRICULTURAL HOSE AND COUPLINGS

## Quick Release Couplings



### INDUSTRY STANDARD - POPPET QP and BALL QT

Dust plug for male coupling

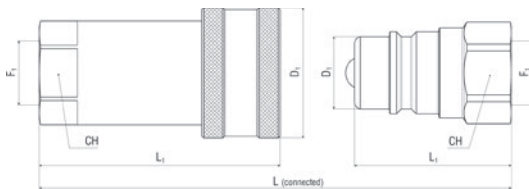
| Item Code | Color | Material | ⌀    |      |     |
|-----------|-------|----------|------|------|-----|
|           |       |          | Dash | mm   | in  |
| QPC-04    | RED   | PE       | 04   | 6.0  | 1/4 |
| QPC-06    | RED   | PE       | 06   | 10.0 | 3/8 |
| QAC-08    | RED   | PE       | 08   | 13.0 | 1/2 |
| QPC-12    | RED   | PE       | 12   | 19.0 | 3/4 |
| QPC-16    | RED   | PE       | 16   | 25.0 | 1   |

## Ball Valve

### QT

BALL INDUSTRY STANDARD ISO 5675

AG INTERCHANGE



### INDUSTRY STANDARD - POPPET QT

Female coupling - Female thread

| Item Code     | ⌀    |      |     | Working Pressure<br>psi | Burst Pressure<br>psi | Thread 1 | F1       | D1   | CH   | L1   | L      |
|---------------|------|------|-----|-------------------------|-----------------------|----------|----------|------|------|------|--------|
|               | Dash | mm   | in  |                         |                       |          |          |      |      |      |        |
| QTF-0404-FNPR | 04   | 6.0  | 1/4 | 5075                    | 20300                 | NPTF     | 1/4-18   | 27.6 | 19.0 | 53.5 | 72.00  |
| QTF-0606-FNPR | 06   | 10.0 | 3/8 | 3915                    | 15660                 | NPTF     | 3/8-18   | 34.0 | 24.0 | 63.0 | 83.00  |
| QTF-0808-FNPR | 08   | 13.0 | 1/2 | 3915                    | 15660                 | NPTF     | 1/2-14   | 38.5 | 27.0 | 66.0 | 88.20  |
| QTF-1212-FNPR | 12   | 19.0 | 3/4 | 2900                    | 11600                 | NPTF     | 3/4-14   | 48.2 | 34.0 | 82.5 | 108.00 |
| QTF-1616-FNPR | 16   | 25.0 | 1   | 2900                    | 11600                 | NPTF     | 1-11 1/2 | 56.5 | 41.0 | 96.5 | 127.00 |

Other threads available. Please consult factory. For Dust Plugs refer to QPP and QAP on page 48.

### INDUSTRY STANDARD - POPPET QT

Male coupling - Female thread

| Item Code     | ⌀    |      |     | Working Pressure<br>psi | Burst Pressure<br>psi | Thread 1 | F1       | D1   | CH   | L1   | L      |
|---------------|------|------|-----|-------------------------|-----------------------|----------|----------|------|------|------|--------|
|               | Dash | mm   | in  |                         |                       |          |          |      |      |      |        |
| QTM-0404-FNPR | 04   | 6.0  | 1/4 | 5075                    | 20300                 | NPTF     | 1/4-18   | 14.1 | 19.0 | 36.0 | 72.00  |
| QTM-0606-FNPR | 06   | 10.0 | 3/8 | 3915                    | 15660                 | NPTF     | 3/8-18   | 18.9 | 24.0 | 40.0 | 83.00  |
| QTM-0808-FNPR | 08   | 13.0 | 1/2 | 3915                    | 15660                 | NPTF     | 1/2-14   | 20.5 | 27.0 | 44.0 | 88.20  |
| QTM-1212-FNPR | 12   | 19.0 | 3/4 | 2900                    | 11600                 | NPTF     | 3/4-14   | 27.9 | 34.0 | 49.0 | 108.00 |
| QTM-1616-FNPR | 16   | 25.0 | 1   | 2900                    | 11600                 | NPTF     | 1-11 1/2 | 31.3 | 41.0 | 64.0 | 127.00 |

Other threads available. Please consult factory. For Dust Plugs refer to QPP and QAP on page 48.

Because we continually examine ways to improve our products, we reserve the right to alter specifications or discontinue products without prior notice.

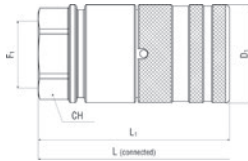
# AGRICULTURAL HOSE AND COUPLINGS

## Quick Release Couplings

### Flat Face

**QF** TOP COAT PATENT PENDING

FLAT FACE STANDARD ISO 16028

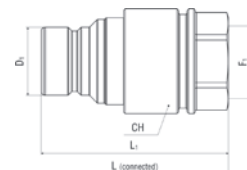


#### STANDARD ISO 16028 - FLAT FACE QF

Female coupling - Female thread

| Item Code     |      |      |     | Working Pressure<br>psi | Burst Pressure<br>psi | Thread 1 | F1           | D1<br>mm | CH<br>mm | L1<br>mm | L<br>mm |
|---------------|------|------|-----|-------------------------|-----------------------|----------|--------------|----------|----------|----------|---------|
|               | Dash | mm   | in  |                         |                       |          |              |          |          |          |         |
| QFF-0404-FNPR | 04   | 6.0  | 1/4 | 5075                    | 20300                 | NPTF     | 1/4-18       | 26.0     | 22.0     | 57.8     | 97.00   |
| QFF-0606-FNPR | 06   | 10.0 | 3/8 | 5075                    | 20300                 | NPTF     | 3/8-18       | 32.0     | 27.0     | 69.3     | 117.00  |
| QFF-0608-FNPR | 06   | 10.0 | 3/8 | 5075                    | 20300                 | NPTF     | 1/2-14       | 32.0     | 27.0     | 69.3     | 117.00  |
| QFF-0808-FNPR | 08   | 13.0 | 1/2 | 5075                    | 20300                 | NPTF     | 1/2-14       | 38.0     | 32.0     | 74.5     | 125.00  |
| QFF-0812-FNPR | 08   | 13.0 | 1/2 | 5075                    | 20300                 | NPTF     | 3/4-14       | 38.0     | 32.0     | 74.5     | 125.00  |
| QFF-1012-FNPR | 10   | 16.0 | 5/8 | 5075                    | 20300                 | NPTF     | 3/4-14       | 40.0     | 34.0     | 81.3     | 134.00  |
| QFF-1212-FNPR | 12   | 19.0 | 3/4 | 5075                    | 20300                 | NPTF     | 3/4-14       | 48.0     | 42.0     | 93.0     | 156.00  |
| QFF-1216-FNPR | 12   | 19.0 | 3/4 | 5075                    | 20300                 | NPTF     | 1-11 1/2     | 48.0     | 42.0     | 93.0     | 156.00  |
| QFF-1616-FNPR | 16   | 25.0 | 1   | 5075                    | 20300                 | NPTF     | 1-11 1/2     | 55.0     | 50.0     | 101.0    | 177.00  |
| QFF-1620-FNPR | 16   | 25.0 | 1   | 5075                    | 20300                 | NPTF     | 1 1/4-11 1/2 | 55.0     | 50.0     | 101.0    | 177.00  |
| QFF-0404-FORB | 04   | 6.0  | 1/4 | 5075                    | 20300                 | SAE-OB   | 7/16-20      | 26.0     | 22.0     | 57.8     | 97.00   |
| QFF-0406-FORB | 04   | 6.0  | 1/4 | 5075                    | 20300                 | SAE-OB   | 9/16-18      | 26.0     | 22.0     | 57.8     | 97.00   |
| QFF-0606-FORB | 06   | 10.0 | 3/8 | 5075                    | 20300                 | SAE-OB   | 9/16-18      | 32.0     | 27.0     | 71.3     | 119.00  |
| QFF-0608-FORB | 06   | 10.0 | 3/8 | 5075                    | 20300                 | SAE-OB   | 3/4-16       | 32.0     | 27.0     | 72.3     | 121.00  |
| QFF-0808-FORB | 08   | 13.0 | 1/2 | 5075                    | 20300                 | SAE-OB   | 3/4-16       | 38.0     | 32.0     | 74.5     | 125.00  |
| QFF-0810-FORB | 08   | 13.0 | 1/2 | 5075                    | 20300                 | SAE-OB   | 7/8-14       | 38.0     | 32.0     | 74.5     | 125.00  |
| QFF-0812-FORB | 08   | 13.0 | 1/2 | 5075                    | 20300                 | SAE-OB   | 1 1/16-12    | 38.0     | 32.0     | 80.5     | 137.00  |
| QFF-1012-FORB | 10   | 16.0 | 5/8 | 5075                    | 20300                 | SAE-OB   | 1 1/16-12    | 40.0     | 34.0     | 90.3     | 153.00  |
| QFF-1212-FORB | 12   | 19.0 | 3/4 | 5075                    | 20300                 | SAE-OB   | 1 1/16-12    | 48.0     | 42.0     | 95.5     | 160.50  |
| QFF-1216-FORB | 12   | 19.0 | 3/4 | 5075                    | 20300                 | SAE-OB   | 1 5/16-12    | 48.0     | 42.0     | 97.5     | 164.50  |
| QFF-1616-FORB | 16   | 25.0 | 1   | 5075                    | 20300                 | SAE-OB   | 1 5/16-12    | 55.0     | 50.0     | 107.3    | 185.30  |
| QFF-1620-FORB | 16   | 25.0 | 1   | 5075                    | 20300                 | SAE-OB   | 1 5/8-12     | 55.0     | 50.0     | 109.3    | 187.30  |

NPTF connection according to ANSI B1-20.3, SAE UNF/UN connection according to SAE J 1926-1. Other threads available. Please consult factory.



#### STANDARD ISO 16028 - FLAT FACE QF

Male coupling - Female thread

| Item Code     |      |      |     | Working Pressure<br>psi | Burst Pressure<br>psi | Thread 1 | F1     | D1<br>mm | CH<br>mm | L1<br>mm | L<br>mm |
|---------------|------|------|-----|-------------------------|-----------------------|----------|--------|----------|----------|----------|---------|
|               | Dash | mm   | in  |                         |                       |          |        |          |          |          |         |
| QFM-0404-FNPR | 04   | 6.0  | 1/4 | 5075                    | 20300                 | NPTF     | 1/4-18 | 16.2     | 20.0     | 50.5     | 97.00   |
| QFM-0606-FNPR | 06   | 10.0 | 3/8 | 5075                    | 20300                 | NPTF     | 3/8-18 | 19.7     | 27.0     | 64.0     | 117.00  |
| QFM-0608-FNPR | 06   | 10.0 | 3/8 | 5075                    | 20300                 | NPTF     | 1/2-14 | 19.7     | 27.0     | 64.0     | 117.00  |


Because we continually examine ways to improve our products, we reserve the right to alter specifications or discontinue products without prior notice.

# AGRICULTURAL HOSE AND COUPLINGS

## Quick Release Couplings

### STANDARD ISO 16028 - FLAT FACE QF (continued)

Male coupling - Female thread

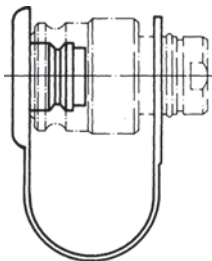
| Item Code     |  |      |     | Working Pressure<br>psi | Burst Pressure<br>psi | Thread 1 | F1           | D1   | CH   | L1    | L      |
|---------------|---|------|-----|-------------------------|-----------------------|----------|--------------|------|------|-------|--------|
|               | Dash  | mm   | in  |                         |                       |          |              |      |      |       |        |
| QFM-0808-FNPR | 08  | 13.0 | 1/2 | 5075                    | 20300                 | NPTF     | 1/2-14       | 24.6 | 32.0 | 68.0  | 125.00 |
| QFM-0812-FNPR | 08  | 13.0 | 1/2 | 5075                    | 20300                 | NPTF     | 3/4-14       | 24.6 | 32.0 | 68.0  | 125.00 |
| QFM-1012-FNPR | 10  | 16.0 | 5/8 | 5075                    | 20300                 | NPTF     | 3/4-14       | 27.0 | 34.0 | 70.0  | 134.00 |
| QFM-1212-FNPR | 12  | 19.0 | 3/4 | 5075                    | 20300                 | NPTF     | 3/4-14       | 29.9 | 42.0 | 85.0  | 156.00 |
| QFM-1216-FNPR | 12  | 19.0 | 3/4 | 5075                    | 20300                 | NPTF     | 1-11 1/2     | 29.9 | 42.0 | 85.0  | 156.00 |
| QFM-1616-FNPR | 16  | 25.0 | 1   | 5075                    | 20300                 | NPTF     | 1-11 1/2     | 36.0 | 50.0 | 99.0  | 177.00 |
| QFM-1620-FNPR | 16  | 25.0 | 1   | 5075                    | 20300                 | NPTF     | 1 1/4-11 1/2 | 36.0 | 50.0 | 99.0  | 177.00 |
| QFM-0404-FORB | 04  | 6.0  | 1/4 | 5075                    | 20300                 | SAE-OB   | 7/16-20      | 16.2 | 20.0 | 50.5  | 97.00  |
| QFM-0406-FORB | 04  | 6.0  | 1/4 | 5075                    | 20300                 | SAE-OB   | 9/16-18      | 16.2 | 20.0 | 50.5  | 97.00  |
| QFM-0606-FORB | 06  | 10.0 | 3/8 | 5075                    | 20300                 | SAE-OB   | 9/16-18      | 19.7 | 27.0 | 64.0  | 119.00 |
| QFM-0608-FORB | 06  | 10.0 | 3/8 | 5075                    | 20300                 | SAE-OB   | 3/4-16       | 19.7 | 27.0 | 65.0  | 121.00 |
| QFM-0808-FORB | 08  | 13.0 | 1/2 | 5075                    | 20300                 | SAE-OB   | 3/4-16       | 24.6 | 32.0 | 72.0  | 125.00 |
| QFM-0810-FORB | 08  | 13.0 | 1/2 | 5075                    | 20300                 | SAE-OB   | 7/8-14       | 24.6 | 32.0 | 72.0  | 125.00 |
| QFM-0812-FORB | 08  | 13.0 | 1/2 | 5075                    | 20300                 | SAE-OB   | 1 1/16-12    | 24.6 | 32.0 | 78.0  | 137.00 |
| QFM-1012-FORB | 10  | 16.0 | 5/8 | 5075                    | 20300                 | SAE-OB   | 1 1/16-12    | 27.0 | 34.0 | 80.0  | 153.00 |
| QFM-1212-FORB | 12  | 19.0 | 3/4 | 5075                    | 20300                 | SAE-OB   | 1 1/16-12    | 29.9 | 42.0 | 87.0  | 160.50 |
| QFM-1216-FORB | 12  | 19.0 | 3/4 | 5075                    | 20300                 | SAE-OB   | 1 5/16-12    | 29.9 | 42.0 | 89.0  | 164.50 |
| QFM-1616-FORB | 16  | 25.0 | 1   | 5075                    | 20300                 | SAE-OB   | 1 5/16-12    | 36.0 | 50.0 | 99.0  | 185.30 |
| QFM-1620-FORB | 16  | 25.0 | 1   | 5075                    | 20300                 | SAE-OB   | 1 5/8-12     | 55.0 | 50.0 | 109.3 | 187.30 |


NPTF connection according to ANSI B1-20.3, SAE UNF/UN connection according to SAE J 1926-1.

Other threads available. Please consult factory.

### STANDARD ISO 16028 - FLAT FACE QF

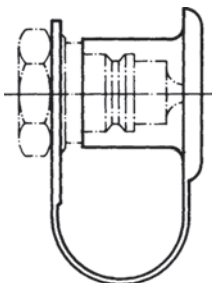
Dust cap for female coupling




| Item Code | Color | Material |  |      |      |
|-----------|-------|----------|---|------|------|
|           |       |          | Dash  | mm   | in   |
| QFP-04    | RED   | PE       | 04  | 6.0  | 1/4" |
| QFP-06    | RED   | PE       | 06  | 10.0 | 3/8" |
| QFP-08    | RED   | PE       | 08  | 13.0 | 1/2" |
| QFP-10    | RED   | PE       | 10  | 16.0 | 5/8" |
| QFP-12    | RED   | PE       | 12  | 19.0 | 3/4" |
| QFP-16    | RED   | PE       | 16  | 25.0 | 1"   |

### STANDARD ISO 16028 - FLAT FACE QF

Dust cap for male coupling



| Item Code | Color | Material |  |      |      |
|-----------|-------|----------|---|------|------|
|           |       |          | Dash  | mm   | in   |
| QFC-04    | RED   | PE       | 04  | 6.0  | 1/4" |
| QFC-06    | RED   | PE       | 06  | 10.0 | 3/8" |
| QFC-08    | RED   | PE       | 08  | 13.0 | 1/2" |
| QFC-10    | RED   | PE       | 10  | 16.0 | 5/8" |
| QFC-12    | RED   | PE       | 12  | 19.0 | 3/4" |
| QFC-16    | RED   | PE       | 16  | 25.0 | 1"   |

Because we continually examine ways to improve our products, we reserve the right to alter specifications or discontinue products without prior notice.

# AGRICULTURAL HOSE AND COUPLINGS

## Technical Information

### Hose Material Selection Guide

| Hose Series                               | Inner Tube Material          | General Applications  | Dilute Water Based Agricultural Chemicals (Wettable Powders) | Dilute Oil Based Agricultural Chemicals (Emulsifiable Liquids) | Concentrated Agricultural Chemicals | Liquid Manure | Oil & Gas |
|---|------------------------------|---|--|--|-------------------------------------|---------------|-----------|
| T505                                      | XLPE                         | Transfer of concentrated agricultural chemicals                       | Excellent  | Excellent  | Excellent                           | Excellent     | Good      |
| A4083 & A4086                             | LLDPE/Rubber                 | Transfer of oil based agricultural chemicals (wettable powders)       | Excellent  | Good   | Limited                             | Good          | Good      |
| A1661 & A1687                             | PVC/TPU                      | Transfer of water based agricultural chemicals (emulsifiable liquids) | Good   | Excellent  | Limited                             | Good          | Excellent |
| K4350                                     | EVA                          | Water and dilute chemical transfer                                    | Good   | Good   | Limited                             | Limited       | Good      |
| BEGP, REGP, TG, AG, TSD, T202 & T253      | EPDM                         | Water and dilute chemical transfer                                    | Good   | Good   | Limited                             | Excellent     | Limited   |
| OF10, OF20, OF20Y, BD & OFDG              | PVC/NBR                      | Water and liquid manure transfer                                      | Good   | Good   | Limited                             | Excellent     | Good      |
| SLR, SG & WST-SLR                         | PVC (Enhanced UV resistance) | Water and dilute liquid fertilizer transfer                           | Good   | Limited  | Limited                             | Limited       | Poor      |
| K4131, K4132, K4137, EG, EGW, H, J, K, BW | PVC                          | Water and dilute liquid fertilizer transfer                           | Good   | Limited  | Limited                             | Limited       | Poor      |
| K050, K3150, FT & WSTF                    | PVC (food grade)             | Water, dairy and other liquid food transfer                           | Good   | Limited  | Limited                             | Limited       | Poor      |
| BLKFT & BL                                | NBR                          | Transfer of oil & petroleum products                                  | Limited  | Limited  | Poor                                | Poor          | Excellent |
| T405                                      | NBR (food grade)             | Transfer of fatty, oily and alcoholic liquids                         | Limited  | Limited  | Poor                                | Poor          | Excellent |

### Layflat Hose Selection Guide

| Product Name             | Hose Series   | Tube Material | General Applications                                   | Overall Durability | Drag Application Suitability | Water     | Liquid Manure |
|--------------------------|---------------|---------------|--|--------------------|------------------------------|-----------|---------------|
| Oroflex® Drag            | OFDG          | TPU           | Manure spreaders                                       | Excellent          | Excellent                    | Excellent | Excellent     |
| Oroflex® Bandama         | BD            | PVC/NBR       | Traveling irrigators                                   | Excellent          | Very Good                    | Excellent | Excellent     |
| Oroflex® 20              | OF20B & OF20Y | PVC/NBR       | Water & liquid manure transfer                         | Excellent          | Good                         | Excellent | Excellent     |
| Oroflex® 10              | OF10          | PVC/NBR       | Water  | Very Good          | Limited                      | Excellent | Excellent     |
| Alfagomma® T253          | T253          | EPDM          | Water and dilute agricultural liquid chemical transfer | Very Good          | Limited                      | Excellent | Limited       |
| Ironsides™               | IS            | PVC           | Water transfer and mining applications                 | Good               | Limited                      | Excellent | Limited       |
| Tuffsides™               | TS            | PVC           | Water transfer   | Good               | Limited                      | Excellent | Limited       |
| Vinylflow™ & Vinylgreen™ | VF, VG & LF   | PVC           | Water transfer and drip irrigation                     | Standard           | Limited                      | Excellent | Limited       |

Because we continually examine ways to improve our products, we reserve the right to alter specifications or discontinue products without prior notice.

# AGRICULTURAL HOSE AND COUPLINGS

## Technical Information

### Friction Loss of PVC Layflat Hose (psi/100 ft.)

| GPM    | 1 1/2" | 2"  | 2 1/2" | 3"  | 4"  | 6"  | 8"  | 10" | 12" | 14" | 16" |
|--------|--------|-----|--------|-----|-----|-----|-----|-----|-----|-----|-----|
| 20     | 1.2    |     |        |     |     |     |     |     |     |     |     |
| 30     | 2.4    |     |        |     |     |     |     |     |     |     |     |
| 40     | 5.1    | 1.1 |        |     |     |     |     |     |     |     |     |
| 50     | 6.0    |     |        |     |     |     |     |     |     |     |     |
| 60     |        | 2.4 | 1.4    |     |     |     |     |     |     |     |     |
| 80     |        | 4.1 | 1.9    | 1.0 |     |     |     |     |     |     |     |
| 90     | 17.0   |     |        |     |     |     |     |     |     |     |     |
| 100    |        | 6.0 | 2.8    | 1.2 |     |     |     |     |     |     |     |
| 120    |        |     |        | 1.8 |     |     |     |     |     |     |     |
| 140    |        |     |        | 2.2 |     |     |     |     |     |     |     |
| 160    |        |     |        | 2.6 | 0.6 |     |     |     |     |     |     |
| 180    |        |     |        | 3.3 | 0.7 |     |     |     |     |     |     |
| 200    |        | 22  | 7      |     | 0.8 |     |     |     |     |     |     |
| 220    |        |     |        |     | 1.0 |     |     |     |     |     |     |
| 240    |        |     |        |     | 1.1 |     | 0.2 |     |     |     |     |
| 250    |        |     |        | 5   |     |     |     |     |     |     |     |
| 260    |        |     |        |     | 1.3 | 0.2 |     |     |     |     |     |
| 280    |        |     |        |     | 1.4 | 0.2 |     |     |     |     |     |
| 300    |        |     |        |     | 1.6 | 0.2 |     |     |     |     |     |
| 340    |        |     |        |     |     | 0.3 |     |     |     |     |     |
| 350    |        |     | 22     |     |     |     |     |     |     |     |     |
| 380    |        |     |        |     |     | 0.4 |     |     |     |     |     |
| 420    |        |     |        |     |     | 0.5 |     |     |     |     |     |
| 460    |        |     |        |     |     | 0.6 |     |     |     |     |     |
| 500    |        |     |        |     | 4   | 0.7 |     |     |     |     |     |
| 540    |        |     |        |     |     | 0.8 |     |     |     |     |     |
| 580    |        |     |        |     | 22  | 0.9 |     |     |     |     |     |
| 620    |        |     |        |     |     | 1.0 |     |     |     |     |     |
| 660    |        |     |        |     |     | 1.1 |     |     |     |     |     |
| 1,200  |        |     |        |     |     | 3.0 |     |     |     |     |     |
| 1,250  |        |     |        |     | 22  |     |     |     |     |     |     |
| 1,800  |        |     |        |     |     |     | 1.5 |     |     |     |     |
| 2,500  |        |     |        |     |     |     |     | 1.0 |     |     |     |
| 3,500  |        |     |        |     |     |     |     |     | 0.8 |     |     |
| 3,630  |        |     |        |     |     | 22  |     |     |     |     |     |
| 5,000  |        |     |        |     |     |     | 11  |     |     | 0.6 |     |
| 6,000  |        |     |        |     |     |     |     |     |     |     | 0.4 |
| 8,000  |        |     |        |     |     |     |     | 8   |     |     |     |
| 12,000 |        |     |        |     |     |     |     |     | 8   |     |     |
| 15,000 |        |     |        |     |     |     |     |     |     | 5   |     |
| 16,000 |        |     |        |     |     |     |     |     |     |     | 30  |

Because we continually examine ways to improve our products, we reserve the right to alter specifications or discontinue products without prior notice.

# AGRICULTURAL HOSE AND COUPLINGS

## Technical Information

### Friction Loss of PVC/Nitrile Layflat Hose in (psi/100 ft.)

| GPM  | 1     | 1 1/4 | 1 1/2 | 1 3/4 | 2     | 2 1/2 | 3     | 3 1/2 | 4     | 4 1/2 | 5     | 6     | 8     | 10   | 12   |
|------|-------|-------|-------|-------|-------|-------|-------|-------|-------|-------|-------|-------|-------|------|------|
| 1    | 0.04  |       |       |       |       |       |       |       |       |       |       |       |       |      |      |
| 2    | 0.15  | 0.05  | 0.02  |       |       |       |       |       |       |       |       |       |       |      |      |
| 5    | 0.82  | 0.28  | 0.11  | 0.05  | 0.03  |       |       |       |       |       |       |       |       |      |      |
| 7    | 1.53  | 0.52  | 0.21  | 0.10  | 0.05  | 0.02  |       |       |       |       |       |       |       |      |      |
| 10   | 2.96  | 1.00  | 0.41  | 0.19  | 0.10  | 0.03  | 0.02  |       |       |       |       |       |       |      |      |
| 15   | 6.27  | 2.11  | 0.87  | 0.41  | 0.21  | 0.07  | 0.05  | 0.03  |       |       |       |       |       |      |      |
| 20   | 10.67 | 3.60  | 1.48  | 0.70  | 0.36  | 0.12  | 0.08  | 0.05  |       |       |       |       |       |      |      |
| 25   | 16.13 | 5.44  | 2.24  | 1.06  | 0.55  | 0.19  | 0.12  | 0.08  | 0.04  |       |       |       |       |      |      |
| 30   | 22.59 | 7.62  | 3.14  | 1.48  | 0.77  | 0.26  | 0.16  | 0.11  | 0.05  | 0.03  |       |       |       |      |      |
| 35   | 30.05 | 10.14 | 4.17  | 1.97  | 1.03  | 0.35  | 0.22  | 0.14  | 0.07  | 0.04  |       |       |       |      |      |
| 40   | 38.47 | 12.98 | 5.34  | 2.52  | 1.32  | 0.44  | 0.28  | 0.18  | 0.09  | 0.04  |       |       |       |      |      |
| 45   | 47.84 | 16.14 | 6.64  | 3.13  | 1.64  | 0.55  | 0.35  | 0.23  | 0.11  | 0.06  | 0.03  |       |       |      |      |
| 50   | 58.13 | 19.61 | 8.07  | 3.81  | 1.99  | 0.67  | 0.42  | 0.28  | 0.13  | 0.07  | 0.04  |       |       |      |      |
| 60   |       | 27.48 | 11.31 | 5.34  | 2.79  | 0.94  | 0.59  | 0.39  | 0.18  | 0.10  | 0.05  |       |       |      |      |
| 70   |       | 36.54 | 15.04 | 7.10  | 3.70  | 1.25  | 0.79  | 0.51  | 0.24  | 0.13  | 0.07  | 0.04  |       |      |      |
| 80   |       |       | 19.25 | 9.09  | 4.74  | 1.60  | 1.01  | 0.66  | 0.31  | 0.16  | 0.09  | 0.05  |       |      |      |
| 90   |       |       | 23.94 | 11.30 | 5.90  | 1.99  | 1.25  | 0.82  | 0.39  | 0.20  | 0.11  | 0.07  |       |      |      |
| 100  |       |       |       | 13.73 | 7.17  | 2.42  | 1.52  | 0.99  | 0.47  | 0.25  | 0.14  | 0.08  |       |      |      |
| 125  |       |       |       | 20.75 | 10.83 | 3.65  | 2.30  | 1.50  | 0.71  | 0.37  | 0.21  | 0.12  | 0.05  |      |      |
| 150  |       |       |       |       | 15.17 | 5.12  | 3.22  | 2.11  | 0.99  | 0.52  | 0.29  | 0.18  | 0.07  |      |      |
| 175  |       |       |       |       | 20.18 | 6.81  | 4.28  | 2.80  | 1.32  | 0.69  | 0.39  | 0.23  | 0.10  |      |      |
| 200  |       |       |       |       | 25.84 | 8.71  | 5.48  | 3.59  | 1.69  | 0.88  | 0.50  | 0.30  | 0.12  |      |      |
| 225  |       |       |       |       | 32.13 | 10.84 | 6.81  | 4.46  | 2.10  | 1.10  | 0.62  | 0.37  | 0.15  |      |      |
| 250  |       |       |       |       |       | 13.17 | 8.28  | 5.42  | 2.56  | 1.33  | 0.75  | 0.45  | 0.19  |      |      |
| 275  |       |       |       |       |       | 15.71 | 9.88  | 6.46  | 3.05  | 1.59  | 0.90  | 0.54  | 0.22  | 0.05 |      |
| 300  |       |       |       |       |       |       | 11.60 | 7.59  | 3.58  | 1.87  | 1.05  | 0.63  | 0.26  | 0.06 |      |
| 350  |       |       |       |       |       |       | 15.43 | 10.10 | 4.77  | 2.49  | 1.40  | 0.84  | 0.35  | 0.09 |      |
| 400  |       |       |       |       |       |       |       | 12.93 | 6.10  | 3.18  | 1.79  | 1.07  | 0.44  | 0.11 |      |
| 450  |       |       |       |       |       |       |       | 16.08 | 7.59  | 3.96  | 2.23  | 1.34  | 0.55  | 0.14 |      |
| 500  |       |       |       |       |       |       |       | 19.54 | 9.22  | 4.81  | 2.71  | 1.62  | 0.67  | 0.16 | 0.06 |
| 600  |       |       |       |       |       |       |       |       | 12.92 | 6.74  | 3.80  | 2.27  | 0.94  | 0.23 | 0.08 |
| 700  |       |       |       |       |       |       |       |       | 17.18 | 8.97  | 5.05  | 3.03  | 1.24  | 0.31 | 0.10 |
| 800  |       |       |       |       |       |       |       |       |       | 11.48 | 6.47  | 3.87  | 1.59  | 0.39 | 0.13 |
| 1000 |       |       |       |       |       |       |       |       |       | 17.35 | 9.78  | 5.85  | 2.41  | 0.59 | 0.20 |
| 1200 |       |       |       |       |       |       |       |       |       |       | 13.70 | 8.20  | 3.37  | 0.83 | 0.28 |
| 1400 |       |       |       |       |       |       |       |       |       |       |       | 10.91 | 4.49  | 1.11 | 0.37 |
| 1600 |       |       |       |       |       |       |       |       |       |       |       | 13.96 | 5.75  | 1.42 | 0.48 |
| 1800 |       |       |       |       |       |       |       |       |       |       |       |       | 7.14  | 1.76 | 0.59 |
| 2000 |       |       |       |       |       |       |       |       |       |       |       |       | 8.68  | 2.14 | 0.72 |
| 2500 |       |       |       |       |       |       |       |       |       |       |       |       | 13.12 | 3.23 | 1.09 |
| 3000 |       |       |       |       |       |       |       |       |       |       |       |       |       | 4.53 | 1.53 |
| 3500 |       |       |       |       |       |       |       |       |       |       |       |       |       | 6.02 | 2.03 |
| 4000 |       |       |       |       |       |       |       |       |       |       |       |       |       | 7.71 | 2.60 |
| 4500 |       |       |       |       |       |       |       |       |       |       |       |       |       |      | 3.23 |
| 5000 |       |       |       |       |       |       |       |       |       |       |       |       |       |      | 3.93 |
| 5500 |       |       |       |       |       |       |       |       |       |       |       |       |       |      | 4.69 |
| 6000 |       |       |       |       |       |       |       |       |       |       |       |       |       |      | 5.51 |
| 6500 |       |       |       |       |       |       |       |       |       |       |       |       |       |      | 6.39 |
| 7000 |       |       |       |       |       |       |       |       |       |       |       |       |       |      | 7.32 |
| 7500 |       |       |       |       |       |       |       |       |       |       |       |       |       |      | 8.32 |
| 8000 |       |       |       |       |       |       |       |       |       |       |       |       |       |      | 9.38 |

**Note:** This calculations are theoretical and based on straight lines . Liquid is water at 20°C.

Recommended maximum velocity for constant work: 11.5 ft/s (3.5m/s).

Maximum recommended velocity for non constant work: 16.4 ft/s (5 m/s).

Values in red match with flows given 16.4 ft/s (5 m/s).

Because we continually examine ways to improve our products, we reserve the right to alter specifications or discontinue products without prior notice.

# AGRICULTURAL HOSE AND COUPLINGS

## Technical Information

### VINYLFLOW® EZ-Lite™ Longitudinal Elongation (%) - (on flat ground only)

| Size   | PRESSURE (psi) |      |      |      |      |      |
|--------|----------------|------|------|------|------|------|
|        | 10             | 20   | 30   | 40   | 50   | 60   |
| 1 1/2" | 0.00           | 0.10 | 0.20 | 0.30 | 0.40 | 0.60 |
| 2"     | 0.00           | 0.20 | 0.30 | 0.60 | 0.80 | -    |
| 3"     | 0.20           | 0.40 | 0.80 | 1.20 | -    | -    |
| 4"     | 0.20           | 0.50 | 1.40 | 1.90 | -    | -    |
| 6"     | 0.00           | 0.40 | 0.80 | 1.40 | -    | -    |
| 8"     | 0.20           | 0.80 | 1.60 | 2.20 | -    | -    |

### VINYLFLOW® Longitudinal Elongation (%) (on flat ground only)

| Size   | PRESSURE (psi) |      |      |      |      |      |      |      |
|--------|----------------|------|------|------|------|------|------|------|
|        | 10             | 20   | 30   | 40   | 50   | 60   | 70   | 80   |
| 1 1/2" | 0.00           | 0.01 | 0.02 | 0.06 | 0.14 | 0.17 | 0.35 | 0.50 |
| 2"     | 0.01           | 0.03 | 0.04 | 0.15 | 0.32 | 0.38 | 0.61 | 0.84 |
| 2 1/2" | 0.06           | 0.15 | 0.23 | 0.50 | 0.79 | 0.95 | 1.33 | 1.57 |
| 3"     | 0.03           | 0.14 | 0.21 | 0.34 | 0.63 | 0.76 | 1.10 | -    |
| 4"     | 0.14           | 0.35 | 0.53 | 0.90 | 1.40 | 1.68 | 1.98 | -    |
| 6"     | 0.14           | 0.42 | 0.63 | 1.08 | 1.35 | -    | -    | -    |
| 8"     | 0.21           | 0.57 | 0.86 | 1.47 | -    | -    | -    | -    |
| 10"    | 0.15           | 0.39 | 0.59 | -    | -    | -    | -    | -    |
| 12"    | 0.14           | 0.55 | 0.82 | -    | -    | -    | -    | -    |
| 16"    | 0.00           | 0.28 | 0.42 | -    | -    | -    | -    | -    |

REV. 11.08

### IRONSIDES® Longitudinal Elongation (%) - (on flat ground only)

| Size   | PRESSURE (psi) |      |      |      |      |      |      |      |      |      |      |      |      |      |      |
|--------|----------------|------|------|------|------|------|------|------|------|------|------|------|------|------|------|
|        | 10             | 20   | 30   | 40   | 50   | 60   | 70   | 80   | 90   | 100  | 110  | 120  | 130  | 140  | 150  |
| 1 1/2" | 0.00           | 0.10 | 0.10 | 0.20 | 0.30 | 0.36 | 0.40 | 0.50 | 0.60 | 0.60 | 0.80 | 0.90 | 0.90 | 1.00 | 1.10 |
| 2"     | 0.00           | 0.00 | 0.00 | 0.10 | 0.10 | 0.10 | 0.20 | 0.40 | 0.60 | 0.60 | 0.70 | 0.80 | 0.80 | 0.90 | 1.10 |
| 2 1/2" | 0.00           | 0.00 | 0.10 | 0.20 | 0.30 | 0.40 | 0.40 | 0.60 | 0.60 | 0.80 | 1.00 | 1.10 | 1.10 | 1.30 | 1.30 |
| 3"     | 0.00           | 0.10 | 0.10 | 0.20 | 0.30 | 0.40 | 0.50 | 0.50 | 0.60 | 0.70 | 0.80 | 1.00 | 1.10 |      |      |
| 4"     | 0.00           | 0.10 | 0.20 | 0.30 | 0.40 | 0.50 | 0.70 | 0.80 | 0.90 | 1.20 | 1.30 | 1.40 | 1.40 |      |      |
| 6"     | 0.00           | 0.10 | 0.30 | 0.50 | 0.50 | 0.60 | 0.80 | 0.90 | 1.00 | 1.20 |      |      |      |      |      |
| 8"     | 0.10           | 0.20 | 0.50 | 0.80 | 1.00 | 1.20 | 1.50 | 0.00 |      |      |      |      |      |      |      |

For sloped ground, add the head pressure shown below:

| Slope Angle | Hose Series         | Additional Head Pressure (psi) per 300 ft. |
|-------------|---------------------|--|
| 5°          | VF, VFL, IS, TS, VG | 11   |
| 10°         |                     | 23   |
| 15°         |                     | 34   |
| 20°         |                     | 44   |
| 25°         |                     | 55   |
| 30°         |                     | 65   |
| 35°         |                     | 75   |
| 40°         |                     | 83   |

### Layflat Hose ID Size Guide

| Hose ID              | 3/4 | 1     | 1 1/2 | 2     | 3 | 4     | 5 | 6     | 8  | 10 | 12 | 14 | 16 |
|----------------------|-----|-------|-------|-------|---|-------|---|-------|----|----|----|----|----|
| Hose Width When Flat | 5/8 | 1 5/8 | 2 1/2 | 3 1/2 | 5 | 6 1/2 | 8 | 9 1/2 | 13 | 16 | 19 | 22 | 25 |

Because we continually examine ways to improve our products, we reserve the right to alter specifications or discontinue products without prior notice.

# Cautionary Statement

All Products sold and distributed by Kuriyama of America, Inc. are in the nature of commodities and they are sold by published specifications and not for particular purposes, uses or applications. Purchaser shall first determine their suitability for the intended purposes, uses or applications and shall either conduct its own engineering studies or tests, or retain qualified engineers, consultants or testing laboratories and consult with them before determining the proper use, suitability or propriety of the merchandise or Products for the intended purposes, uses or applications.

Kuriyama of America, Inc. ("Seller") does not recommend the Products for any particular purpose, use or application, and the Purchaser or user thereof shall assume full responsibility for the suitability, propriety, use and application of the Products. Purchaser shall follow all instructions contained in Seller's catalogs, brochures, technical bulletins and other documents regarding the Products. The Products, including but not limited to, hose, tubing or couplings, may fail due to the use or conveyance of substances at elevated or lowered temperatures or at excessive pressure, the conveyance of abrasive, injurious, flammable, explosive or damaging substances.

Hose or tubing used in bent configurations will be subjected to increased abrasion. Hose clamps or couplings may loosen after initial installation and all sections of hose and tubing including connections, couplings, clamps, conductivity and bonding should be inspected frequently, regularly and consistently, and should be replaced, adjusted or re-tightened for the avoidance of leakage, for the prevention of injuries or damages, and for general safety purposes. Except as indicated in its Limited Warranty, Seller shall not be liable or responsible for direct or indirect injuries or damages caused by or attributed to the failure or malfunction of any Products sold or distributed by it.

Purchasers or users of the Products should frequently and consistently undertake inspections and protective measures with respect to the use and application of Products, which should include the examination of tube and cover, conditions of the hose or tubing, and the identification, repair or replacement of sections showing cracking, blistering, separations, internal and external abrasions, leaking or slipped couplings or connections and make proper proof tests.

## Limited Warranty

The Products sold or distributed by Seller are warranted to its customers to be free from defects in material and workmanship at the time of shipment by us, subject to the following provisions. ALL WARRANTY CLAIMS SHALL BE MADE WITHIN SIX (6) MONTHS AFTER SELLER SHIPPED THE PRODUCTS. SELLER'S LIABILITY HEREUNDER IS LIMITED AT SELLER'S EXCLUSIVE DISCRETION, TO 1) THE PURCHASE PRICE OF ANY PRODUCTS PROVING DEFECTIVE; 2) REPAIR OF ANY DEFECTIVE PRODUCT OR PART THEREOF; OR 3) REPLACEMENT OF ANY DEFECTIVE PRODUCT OR PART UPON ITS AUTHORIZED RETURN TO SELLER.

THIS WARRANTY IS IN LIEU OF AND EXCLUDES ALL OTHER WARRANTIES, EXPRESSED, IMPLIED, STATUTORY, OR OTHERWISE CREATED UNDER APPLICABLE LAW INCLUDING, BUT NOT LIMITED TO, THE WARRANTY OF MERCHANTABILITY AND THE WARRANTY OF FITNESS FOR A PARTICULAR PURPOSE. IN NO EVENT SHALL SELLER OR THE MANUFACTURER OF THE PRODUCT BE LIABLE FOR SPECIAL, INCIDENTAL, OR CONSEQUENTIAL DAMAGES, INCLUDING LOSS OF PROFITS, WHETHER OR NOT CAUSED BY OR RESULTING FROM THE NEGLIGENCE OF SELLER AND/OR THE MANUFACTURER OF THE PRODUCT, UNLESS SPECIFICALLY PROVIDED HEREIN. IN ADDITION, THIS WARRANTY SHALL NOT APPLY TO ANY PRODUCTS OR PORTIONS THEREOF WHICH HAVE BEEN SUBJECT TO ABUSE, MISUSE, IMPROPER INSTALLATION, MAINTENANCE, OR OPERATION, ELECTRICAL FAILURE OR ABNORMAL CONDITIONS, AND TO PRODUCTS WHICH HAVE BEEN TAMPERED WITH, ALTERED, MODIFIED, REPAIRED, REWORKED BY ANYONE NOT APPROVED BY SELLER, OR USED IN ANY MANNER INCONSISTENT WITH THE PROVISIONS OF THE "CAUTIONARY STATEMENT" ABOVE OR ANY INSTRUCTIONS OR SPECIFICATIONS PROVIDED WITH OR FOR THE PRODUCT. 05/03/21 REV

Distributed by:



Since 1968

### HEADQUARTERS, SALES OFFICE AND WAREHOUSE

360 E. State Parkway, Schaumburg, IL 60173-5335  
Phone: (847) 755-0360 • Toll-free Fax: (800) 800-0320  
International Fax: (847) 885-0996



[kuriyama.com](http://kuriyama.com)



[sales@kuriyama.com](mailto:sales@kuriyama.com)



The trademarks contained in this publication are trademarks of Kuriyama of America, Inc.

The "Alfagomma" trademark contained in this publication is a registered trademark of Alfagomma S.p.A.

## CONTACT OUR SALES/WAREHOUSE LOCATIONS BELOW WHICH SERVE YOUR AREA

### SOUTHWEST WAREHOUSE

**KURIYAMA OF AMERICA, INC.**

– HOUSTON

200 Portwall Street, Suite 100  
HOUSTON, TX 77029

Phone: (713) 674-8212

Toll Free Phone: (800) 501-6808

FAX: (713) 674-5214

Toll Free FAX: (800) 800-5214

E-Mail: [sales@kuriyama.com](mailto:sales@kuriyama.com)

### WESTERN WAREHOUSE

**KURIYAMA OF AMERICA, INC.**

– SANTA FE SPRINGS

10749 SHOEMAKER AVENUE

SANTA FE SPRINGS, CA 90670-4039

Phone: (562) 941-4507

FAX: (562) 941-8940

Toll-Free FAX: (800) 326-8940

E-Mail: [sales@kuriyama.com](mailto:sales@kuriyama.com)

### SOUTHEAST WAREHOUSE

**FORTNEY SALES CO., INC.**

4221 Cantrell Road NW

Acworth, GA 30101

Phone: (770) 427-6528

FAX: (770) 423-9249

Toll Free FAX: (800) 423-9249

Web Site: [www.fortneysales.com](http://www.fortneysales.com)

E-Mail: [sales@fortneysales.com](mailto:sales@fortneysales.com)

### EASTERN WAREHOUSE

**EASTERN RUBBER & PLASTICS CO., INC.**

100 GOLDMAN DR.

PLUMSTED INDUSTRIAL PARK

CREAM RIDGE, NJ 08514

Phone: (609) 758-0100

FAX: (609) 758-0102

Toll Free FAX: (800) 445-7138

Web Site: [www.easternrubber.com](http://www.easternrubber.com)

E-Mail: [sales@easternrubber.com](mailto:sales@easternrubber.com)

### IN MEXICO:

**KURIYAMA DE MÉXICO S DE RL DE CV**

AV JOSE PALOMO MARTINEZ NO 520-20 BODEGA 5

PARQUE INDUSTRIAL OMOLAP

APODACA, N.L. CP:66633, MÉXICO

Telefonos: (81) 1086-1870 0 71

Internet: [www.kuriyama.com.mx](http://www.kuriyama.com.mx)

[www.kuriyama.com](http://www.kuriyama.com)

Correo Electronico: [ventas@kuriyama.com](mailto:ventas@kuriyama.com)