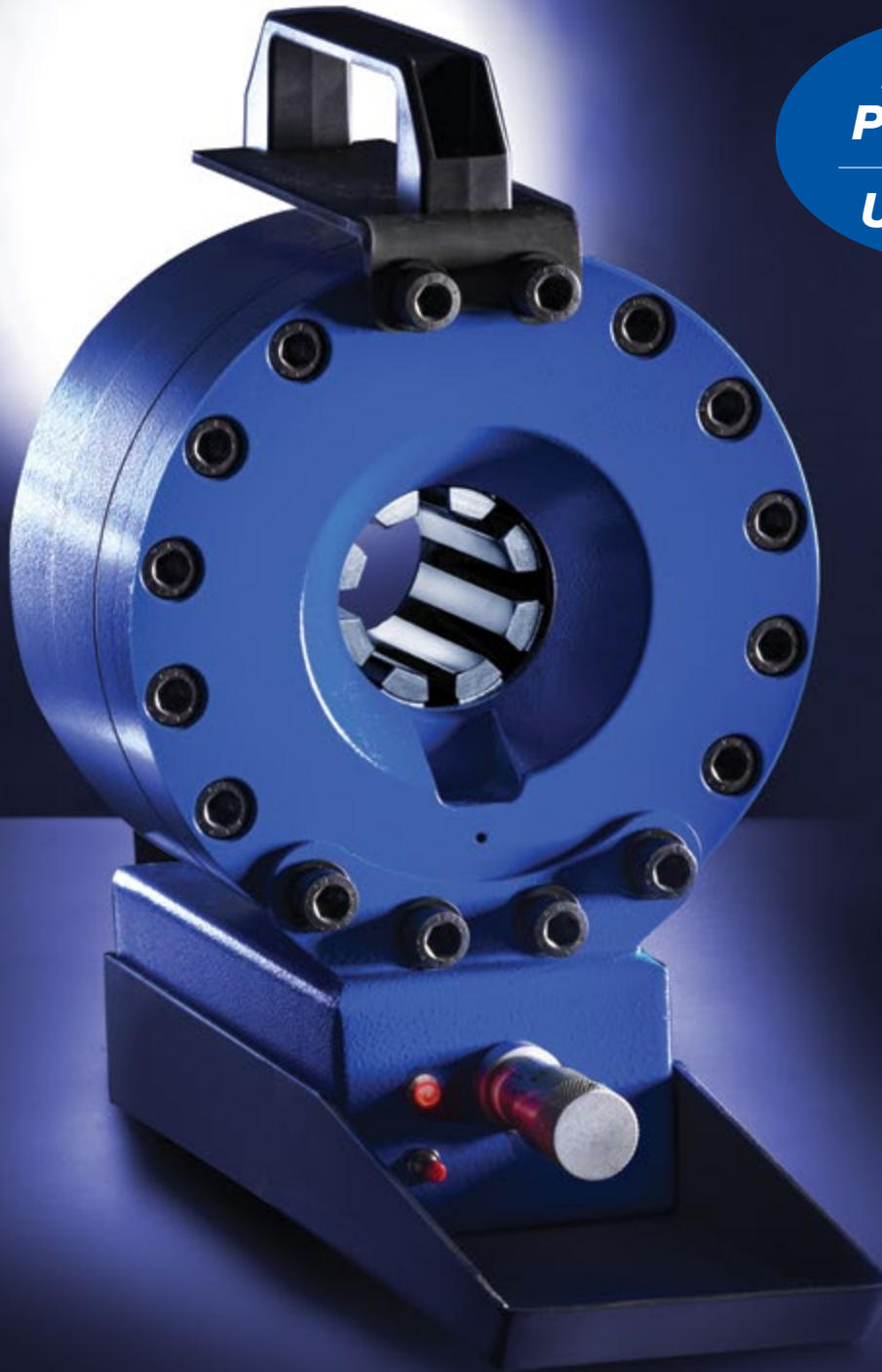




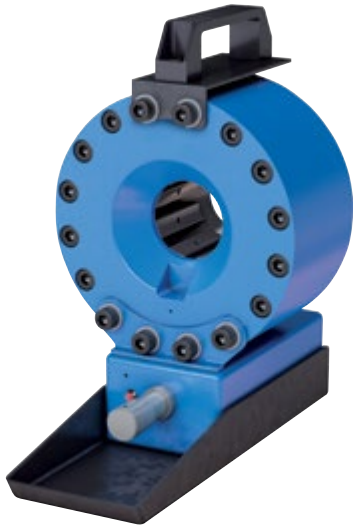
**KuriCrimp**<sup>TM</sup>

POWERED BY **Op**<sup>®</sup>



**NEW**  
**Products**  
— AND —  
**Updates**

## KC1-H47E Series



**NEW**



Case with eight dies (10, 12, 14, 16, 19, 22, 25 and 29 mm) available (sold separately)  
PN# KC1-H47E-DIECASE

Hose Capacity (in)		Crimping Force (ton)
1 – 2 Wire	1	<b>110</b>
4 SP / 6 SP	NA	
90° Fittings	3/8	
Industrial	NA	

Opening Diameter	
Max. With Dies (mm / in)	<b>49 / 1.93</b>
By Die Size (mm / in)	Die Size + <b>20 / 0.79</b>

Crimper Size	
L x W x H (in)	7.87 x 12.36 x 12.60
Weight (lbs)	52

Part Number	Pump Info
KC1-H47E	Hand, Air or Battery

### DESCRIPTION

With its built-in carrying handle, and weighing a mere 52 lbs., this crimper was built for the road, perfect for on-site service in remote spots. It's powered by either a separate hand, pneumatic or battery powered pump (sold separately).

### CONTROL MECHANISM



Dial micrometer, with electric limit switch indicating when the crimp diameter is reached.

### INCLUDED ACCESSORIES



Die Change Tool  
KCDCT-H39



Carry Handle

### OPTIONAL ACCESSORIES



**NEW**

Battery Pump  
KC1-H47E-BPP



Hand Pump  
KC1-H47E-HP



Air Pump  
KC1-H47E-PAP

Die Series	Die Range (mm)
H39	6 – 29

Die Number	Crimp Range (mm)	Closed Diameter (mm)	Length (mm)	Weight (lbs/ea)
KCDH39-6	6.0 - 8.0	6	55	4.0
KCDH39-8	8.0 - 10.0	8	55	4.0
KCDH39-10	10.0 - 12.0	10	55	4.0
KCDH39-12	12.0 - 14.0	12	55	4.0
KCDH39-14	14.0 - 16.0	14	55	4.0
KCDH39-16	16.0 - 19.0	16	55	4.0
KCDH39-19	19.0 - 22.0	19	55	4.0
KCDH39-22	22.0 - 25.0	22	55	4.0
KCDH39-25	25.0 - 29.0	25	65	4.0
KCDH39-29	29.0 - 34.0	29	65	4.0

See page 11 for hydraulic oil usage information

### BATTERY PUMP INFO KC1-H47E-BPP

- One 14.4V battery (PN# BATT-H47E) included
- Charger included
- Compact and lightweight (only 18 lbs.)

**NEW**



(sold separately)



Support Frame  
KC1-H47E-BASE



**NEW**

Case and Dies  
KC1-H47E-DIECASE

Because we continually examine ways to improve our products, we reserve the right to alter specifications or discontinue products without prior notice.

**KC1-H64PI Series**

**NEW**



Hose Capacity (in)		<b>132</b>	Crimping Force (ton)
1 – 2 Wire	1 1/2		
4 SP / 6 SP	1 1/4* / 1		
90° Fittings	NA		
Industrial	NA		

\* 1 1/4" up to 4,000 PSI. 1" up to 5,000 PSI.

Opening Diameter	
Max. With Dies (mm / in)	<b>69 / 2.72</b>
By Die Size (mm / in)	Die Size + <b>15 / 0.59</b>

Crimper Size	
L x W x H (in)	12.1 x 10.1 x 12.2
Weight (lbs)	95

Part Number	Pump Info
KC1-H64PI	Air

**DESCRIPTION**

Portable and powerful. Its built-in carrying handle and 95 lbs. weight makes it excellent for switching between on-site and in-shop use. Crimps up to 1 1/2" two wire, and 1 1/4" 4 SP hydraulic hoses.

**INCLUDED ACCESSORIES**



Die Change Tool



Air Pump



Carry Handle

**OPTIONAL ACCESSORIES**



Custom Made Dies

**CONTROL MECHANISM**



Dial micrometer, with electric limit switch indicating when the crimp diameter is reached.

Die Series	Die Range (mm)
H64	6 – 54

Die Number	Crimp Range (mm)	Closed Diameter (mm)	Length (mm)	Weight (lbs/ea)
KCDH64-6	6.0 - 8.0	6	46	4.0
KCDH64-8	8.0 - 10.0	8	46	4.0
KCDH64-10	10.0 - 12.0	10	46	4.0
KCDH64-12	12.0 - 14.0	12	46	4.0
KCDH64-14	14.0 - 16.0	14	46	4.0
KCDH64-16	16.0 - 19.0	16	46	4.0
KCDH64-19	19.0 - 22.0	19	55	4.0
KCDH64-22	22.0 - 25.0	22	55	4.0
KCDH64-25	25.0 - 29.0	25	55	4.0
KCDH64-29	29.0 - 34.0	29	60	4.0
KCDH64-34	34.0 - 38.0	34	60	4.0
KCDH64-38	38.0 - 42.0	38	65	4.0
KCDH64-42	42.0 - 46.0	42	65	4.0
KCDH64-46	46.0 - 50.0	46	65	4.0
KCDH64-50	50.0 - 54.0	50	65	4.0
KCDH64-54	54.0 - 58.0	54	65	4.0

See page 11 for hydraulic oil usage information

Because we continually examine ways to improve our products, we reserve the right to alter specifications or discontinue products without prior notice.

## KC2-J67 Series

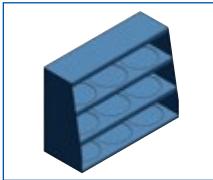
**NOW WITH  
RUBBER CAGE  
DIES**



### DESCRIPTION

An extremely powerful, vertical unit, with a robust 190 tons of crimping force. Crimps up to 1 1/2" two wire, and up to 1 1/4" 4,000 PSI and 1" 5,000 PSI, hydraulic hoses. Uses color coded rubber cage dies for easier handling and identification.

### OPTIONAL ACCESSORIES



Die Rack  
DIERACK-J67



Custom Made Dies

Hose Capacity (in)		Crimping Force (ton)
1 – 2 Wire	1 1/2	<b>190</b>
4 SP / 6 SP	1 1/4 / NA	
90° Fittings	1 1/2	
Industrial	NA	

Opening Diameter	
Max. With Dies (mm / in)	<b>67 / 2.64</b>
By Die Size (mm / in)	NA

Crimper Size	
L x W x H (in)	20.5 x 19.3 x 20.2
Weight (lbs)	195

Part Number	Motor Info
KC2-J67-110/1	1.5 HP (110 V) 1 PH

### CONTROL MECHANISM



Digital dial micrometer, and electromechanical power control. Easily switches between English and metric values.

Die Series	Die Range (mm)			
J67	6 – 54			
Die Number	Crimp Range (mm)	Closed Diameter (mm)	Length (mm)	Weight (lbs/ea)
KCDJ67-6	6.0 - 8.0	6	75	14.5
KCDJ67-8	8.0 - 10.0	8	75	14.5
KCDJ67-10	10.0 - 12.0	10	75	14.5
KCDJ67-12	12.0 - 14.0	12	75	14.5
KCDJ67-14	14.0 - 16.0	14	75	14.5
KCDJ67-16	16.0 - 19.0	16	75	14.5
KCDJ67-19	19.0 - 22.0	19	75	14.5
KCDJ67-22	22.0 - 25.0	22	75	14.5
KCDJ67-25	25.0 - 29.0	25	75	14.5
KCDJ67-29	29.0 - 34.0	29	75	14.5
KCDJ67-34	34.0 - 38.0	34	75	14.5
KCDJ67-38	38.0 - 42.0	38	75	14.5
KCDJ67-42	42.0 - 46.0	42	75	14.5
KCDJ67-46	46.0 - 50.0	46	75	14.5
KCDJ67-50	50.0 - 54.0	50	75	14.5
KCDJ67-54	54.0 - 58.0	54	75	14.5

See page 11 for hydraulic oil usage information

Because we continually examine ways to improve our products, we reserve the right to alter specifications or discontinue products without prior notice.

## KC1-H83 Series



NOW  
 AVAILABLE IN  
**12V**

### DESCRIPTION

A highly precise unit that packs a punch. Its small footprint makes it an ideal fit for shops where space is at a premium.

Now available in 12V for mobile service trucks.

### INCLUDED ACCESSORIES



Die Rack (12 pc.)  
DIERACK-H69

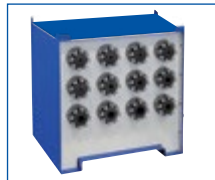
### OPTIONAL ACCESSORIES



Quick Change Die Tool  
KCQCT-H69



Patented Quick Change  
Die Tool  
KCPQCT-H69



Die Holder Base (12 pc.)  
DIEBASE-H69



Electric Foot Pedals  
PEDAL-KC1



Custom Made Dies



Marking Dies

See page 11 for hydraulic oil usage information

Hose Capacity (in)		Crimping Force (ton)
1 – 2 Wire	1 1/2	<b>150</b>
4 SP / 6 SP	1 1/4 / 1	
90° Fittings	1 1/4	
Industrial	1 1/2	

Opening Diameter	
Max. Without Dies (mm / in)	<b>111 / 4.37</b>
Max. With Dies (mm / in)	<b>96 / 3.78</b>
By Die Size (mm / in)	Die Size + <b>42 / 1.65</b>

Crimper Size	
L x W x H (in)	23.3 x 23.3 x 21.3
Weight (lbs)	264

Part Number	Motor Info
KC1-H83-230/1	4.0 HP (230 V) 1 PH
KC1-H83-230/3	4.0 HP (230 V) 3 PH
KC1-H83-12V	4.0 HP (12 V)

### CONTROL MECHANISM



- Dial micrometer with locking switch
- Electromechanical controls with power, open/close and emergency off buttons

Die Series	Die Range (mm)
H69	6 – 54

Die Number	Crimp Range (mm)	Closed Diameter (mm)	Length (mm)	Weight (lbs/ea)
KCDH69-6	6.0 - 8.0	6	60	4.0
KCDH69-8	8.0 - 10.0	8	60	4.0
KCDH69-10	10.0 - 12.0	10	60	4.0
KCDH69-12	12.0 - 14.0	12	60	4.0
KCDH69-14	14.0 - 16.0	14	60	4.0
KCDH69-16	16.0 - 19.0	16	60	4.0
KCDH69-19	19.0 - 22.0	19	60	4.0
KCDH69-22	22.0 - 25.0	22	60	4.0
KCDH69-25	25.0 - 29.0	25	60	4.0
KCDH69-29	29.0 - 34.0	29	70	4.0
KCDH69-34	34.0 - 38.0	34	70	4.0
KCDH69-38	38.0 - 42.0	38	85	4.0
KCDH69-42	42.0 - 46.0	42	85	4.0
KCDH69-46	46.0 - 50.0	46	85	4.0
KCDH69-50	50.0 - 54.0	50	85	4.0
KCDH69-54	54.0 - 58.0	54	75	4.0

Because we continually examine ways to improve our products, we reserve the right to alter specifications or discontinue products without prior notice.

## KCS-TF1D/E-BAT Series



Hose Capacity (in)	
1 – 2 Wire	1 1/4
4 SP / 6 SP	1 1/4 / 1
Industrial	1 1/2
Max opening (mm)	55
Cutter Size	
L x W x H (in)	12.8 x 13.8 x 15.75
Weight (lbs)	15.4
Blade Diameter (mm)	165
Part Number	Battery Info
KCS-TF1D/E-BAT	18V 5Ah

### DESCRIPTION

Small and portable while still handling most sizes of hydraulic hose; including 1 1/4" two wire, four spiral, and 1" six spiral. With its small size, battery powered operation and weighing a mere 15 lbs., it makes the perfect saw for on-site visits or for when shop space is limited.

Its recessed blade is protected within housing for operator safety. The unit includes one 18V rechargeable batteries, battery charger and one 165 mm diamond blade.

Suggested for use with the KC1-H47E crimper available with a battery, hand or air powered pump; as well as our 12 volt KC1-H83-12V crimper.

### INCLUDED ACCESSORIES



Battery (1 included)  
BATT-KCS-TF1D/E



Diamond Blade  
BLADE-DIA165



Recessed Blade

Because we continually examine ways to improve our products, we reserve the right to alter specifications or discontinue products without prior notice.

**KCS-TF1/E Series**

NOW AVAILABLE IN **12V**



Hose Capacity (in)		Motor Strength (HP)
1 – 2 Wire	1 1/4	<b>1.5</b>
4 SP / 6 SP	1 1/4 / 1	
Industrial	2	
Max opening (mm)	60	

Cutter Size	
L x W x H (in)	20.7 x 26.0 x 17.5
Weight (lbs)	66.1
Blade Diameter (mm)	250

Part Number	Motor Info
KCS-TF1/E-110/1	1.5 HP (110 V) 1 PH
KCS-TF1/E-12V	1.5 HP (12 V)

**DESCRIPTION**

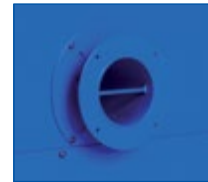
A compact, bench mounted unit ideal for cutting 1 1/4" four spiral and 1" six spiral hydraulic hose.

Suggested for pairing with KC1-H83 and KC3-H88 series crimpers.

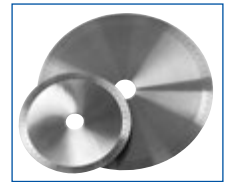
**INCLUDED ACCESSORIES**



Recessed Blade



Ventilation Port\*



Serrated Blade†  
BLADE-SER250

\* Separate suction device required for fume extraction

† CAUTION: Not for use with hoses containing steel, helical reinforcement.

**OPTIONAL ACCESSORIES**



Smooth Blade  
BLADE-SMT250



Diamond Blade  
BLADE-DIA250

Because we continually examine ways to improve our products, we reserve the right to alter specifications or discontinue products without prior notice.

## KCS-TT30PI Series



Hose Capacity (in)		Pneumatic Input (PSI)
1 – 2 Wire	NA	<b>87</b>
4 SP / 6 SP	NA	
Industrial*†	5/8	
Max opening (mm)	30	

\*Not for use with hoses with steel reinforcement.  
 † Up to 3/4" depending on hose type

Cutter Size	
L x W x H (in)	17.3 x 18.3 x 16.9
Weight (lbs)	66

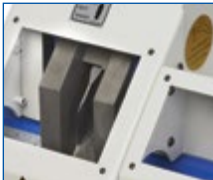
Part Number	Pump Info
KCS-TT30PI	Air

### DESCRIPTION

Pneumatically powered guillotine hose cutter for fabric reinforced hose and plastic tubing up to 3/4" ID. Delivers a clean, repeatable 90° cut, while reducing production speed up to five times versus using a simple hand cutter. Not designed for use with hose containing metal reinforcement.



### INCLUDED ACCESSORIES



Enclosed Blade Chamber



Blade  
BLADE-TT30PI

### OPTIONAL ACCESSORIES



Measuring Hose Tray  
TRAY-TT30PI



Electric Foot Pedal  
PEDAL-TT30PI

Because we continually examine ways to improve our products, we reserve the right to alter specifications or discontinue products without prior notice.



## KCMARKH Series Marking Die Segments



### DESCRIPTION

- Imprints your own custom message, logo, or date code on the ferrule during the crimping process.
- Purchase your own custom set of letters, numbers, symbols and spacer blocks; which can be arranged and rearranged in any manner to create various branding messages or date codes for hose traceability.
- Used in conjunction with standard die set for that size, and replaces one of the eight standard die segments with marking die segment.
- Marking varies in height from 1.5 mm to 4 mm, and in length from 10 to 15 characters, depending on die size.
- For use with KC1-H130, KC3-H130, KC1-H135, KC3-H135, KC3-H144 and KC3-H170 Series Crimpers.
- Also available for KC1-H83, KC3-H88 and all KC4 Series crimpers. Contact Kuriyama Customer Service for details.

### For KC1-H130, KC3-H130, KC1-H135, KC3-H135, KC3-H144 and KC3-H170 Series Crimpers

Part Number	Crimp Range (mm)	Closed Diameter (mm)	Length (mm)	Weight (lbs/ea)	Available Character Spaces	Individual Character Blocks Part Number
KCMARKH119-12	12.0 - 14.0	12	60	1.5	10	KCHAR1.5MM
KCMARKH119-14	14.0 - 16.0	14	60	1.5	10	KCHAR1.5MM
KCMARKH119-16	16.0 - 19.0	16	60	1.5	10	KCHAR2MM
KCMARKH119-19	19.0 - 22.0	19	60	1.5	15	KCHAR2MM
KCMARKH119-22	22.0 - 25.0	22	60	1.5	15	KCHAR2MM
KCMARKH119-25	25.0 - 29.0	25	60	1.5	15	KCHAR2MM
KCMARKH119-29	29.0 - 34.0	29	70	1.5	15	KCHAR2MM
KCMARKH119-34	34.0 - 38.0	34	70	1.5	15	KCHAR3MM
KCMARKH119-38	38.0 - 42.0	38	85	1.5	15	KCHAR3MM
KCMARKH119-42	42.0 - 46.0	42	85	1.9	15	KCHAR3MM
KCMARKH119-46	46.0 - 50.0	46	95	1.9	15	KCHAR3MM
KCMARKH119-50	50.0 - 54.0	50	95	1.9	15	KCHAR3MM
KCMARKH119-54	54.0 - 58.0	54	110	1.9	15	KCHAR3MM
KCMARKH119-58	58.0 - 63.0	58	95	1.9	15	KCHAR3MM
KCMARKH119-63	63.0 - 69.0	63	120	1.9	15	KCHAR3MM
KCMARKH119-69	69.0 - 73.0	69	100	1.8	15	KCHAR3MM
KCMARKH119-73	73.0 - 77.0	73	120	1.5	15	KCHAR3MM
KCMARKH119-77	77.0 - 86.0	77	120	1.5	15	KCHAR3MM
KCMARKH119-86	86.0 - 90.0	86	120	1.5	15	KCHAR3MM
KCMARKH119-90	90.0 - 96.0	90	150	1.5	15	KCHAR3MM
KCMARKH119-96	96.0 - 103.0	96	120	1.5	15	KCHAR3MM

Because we continually examine ways to improve our products, we reserve the right to alter specifications or discontinue products without prior notice.

## KCMARKH Series *(continued)* Marking Die Segments

**For KC3-H144 and KC3-H170 Series Crimpers Only**

Part Number	Crimp Range (mm)	Closed Diameter (mm)	Length (mm)	Weight (lbs/ea)	Available Character Spaces	Individual Character Blocks Part Number
KCMARKH144-103	103.0 - 106.0	103	130	1.5	12	KCHAR4MM
KCMARKH144-106	106.0 - 111.0	106	130	1.5	12	KCHAR4MM
KCMARKH144-111	111.0 - 116.0	111	130	1.5	12	KCHAR4MM
KCMARKH144-116	116.0 - 121.0	116	130	1.5	12	KCHAR4MM
KCMARKH144-121	121.0 - 126.0	121	130	1.5	12	KCHAR4MM
KCMARKH144-126	126.0 - 131.0	126	130	1.5	12	KCHAR4MM
KCMARKH144-131	131.0 - 144.0	131	130	1.5	12	KCHAR4MM

### Individual Character Blocks - KCHAR Series

Part Number	Die Sizes (mm)	Character Height (mm)
KCHAR1.5MM	12 & 14	1.5
KCHAR2MM	16, 19, 22, 25 & 29	2.0
KCHAR3MM	34, 38, 42, 46, 50, 54, 58, 63, 69 & 73	3.0
KCHAR4MM	103, 106, 111, 116, 121, 121, 126 & 131	4.0



Because we continually examine ways to improve our products, we reserve the right to alter specifications or discontinue products without prior notice.

## Hydraulic Oil by Series

Series	Oil Type
All H Series Crimpers	ISO 46 hydraulic fluid
All V series crimpers	ISO 46 hydraulic fluid
Foot Pedal Air over Hydraulic for H47e series	ISO 15 or VG15 hydraulic fluid
Foot Pedal Air over Hydraulic for H64 series	ISO 15 or VG15 hydraulic fluid
Hand Pumps for H47e series	HLP 10 or ISO 15 (we use AGIP ACER 15)
Hand pumps for H64 series	HLP 10 or ISO 15 (we use AGIP ACER 15)
J67 series	ISO 32 hydraulic fluid
H25 and H26 series	ISO 46 hydraulic fluid

Consult individual product manual for appropriate oil quantity



**Visit KuriCrimp.com**  
 Your complete crimping resource

- Crimping calculator
- My KuriCrimp crimping app
- Financing information
- Label generator
- Product information
- Crimper selection guides

**The KuriCrimp™ System**  
 The KuriCrimp System represents the coming together of Kuriyama's Kuri Tec®, Tigerflex™, Piranha™ and Tipsa™ industrial hose brands and full line of KCA Couplings™, featuring our High-Quality Cam Lock Design, 3-A Sanitary Fittings and Sphere Lock™ Ball and Socket Couplings; Alfagomma's vast range of industrial and hydraulic rubber hose; and O+P's expansive line of universal hose and tubing processing equipment.

**Featured Links**

- INDUSTRIAL HOSE CRIMPING CALCULATOR
- My KuriCrimp HYDRAULIC HOSE CRIMPING APP

Because we continually examine ways to improve our products, we reserve the right to alter specifications or discontinue products without prior notice.

# Cautionary Statement

All Products sold and distributed by Kuriyama of America, Inc. are in the nature of commodities and they are sold by published specifications and not for particular purposes, uses or applications. Purchaser shall first determine their suitability for the intended purposes, uses or applications and shall either conduct its own engineering studies or tests, or retain qualified engineers, consultants or testing laboratories and consult with them before determining the proper use, suitability or propriety of the merchandise or Products for the intended purposes, uses or applications.

Kuriyama of America, Inc. ("Seller") does not recommend the Products for any particular purpose, use or application, and the Purchaser or user thereof shall assume full responsibility for the suitability, propriety, use and application of the Products. Purchaser shall follow all instructions contained in Seller's catalogs, brochures, technical bulletins and other documents regarding the Products. The Products, including but not limited to, hose, tubing or couplings, may fail due to the use or conveyance of substances at elevated or lowered temperatures or at excessive pressure, the conveyance of abrasive, injurious, flammable, explosive or damaging substances.

Hose or tubing used in bent configurations will be subjected to increased abrasion. Hose clamps or couplings may loosen after initial installation and all sections of hose and tubing including connections, couplings, clamps, conductivity and bonding should be inspected frequently, regularly and consistently, and should be replaced, adjusted or re-tightened for the avoidance of leakage, for the prevention of injuries or damages, and for general safety purposes. Except as indicated in its Limited Warranty, Seller shall not be liable or responsible for direct or indirect injuries or damages caused by or attributed to the failure or malfunction of any Products sold or distributed by it.

Purchasers or users of the Products should frequently and consistently undertake inspections and protective measures with respect to the use and application of Products, which should include the examination of tube and cover, conditions of the hose or tubing, and the identification, repair or replacement of sections showing cracking, blistering, separations, internal and external abrasions, leaking or slipped couplings or connections and make proper proof tests.

## Limited Warranty

The Products sold or distributed by Seller are warranted to its customers to be free from defects in material and workmanship at the time of shipment by us, subject to the following provisions. ALL WARRANTY CLAIMS SHALL BE MADE WITHIN SIX (6) MONTHS AFTER SELLER SHIPPED THE PRODUCTS. SELLER'S LIABILITY HEREUNDER IS LIMITED AT SELLER'S EXCLUSIVE DISCRETION, TO 1) THE PURCHASE PRICE OF ANY PRODUCTS PROVING DEFECTIVE; 2) REPAIR OF ANY DEFECTIVE PRODUCT OR PART THEREOF; OR 3) REPLACEMENT OF ANY DEFECTIVE PRODUCT OR PART UPON ITS AUTHORIZED RETURN TO SELLER.

THIS WARRANTY IS IN LIEU OF AND EXCLUDES ALL OTHER WARRANTIES, EXPRESSED, IMPLIED, STATUTORY, OR OTHERWISE CREATED UNDER APPLICABLE LAW INCLUDING, BUT NOT LIMITED TO, THE WARRANTY OF MERCHANTABILITY AND THE WARRANTY OF FITNESS FOR A PARTICULAR PURPOSE. IN NO EVENT SHALL SELLER OR THE MANUFACTURER OF THE PRODUCT BE LIABLE FOR SPECIAL, INCIDENTAL, OR CONSEQUENTIAL DAMAGES, INCLUDING LOSS OF PROFITS, WHETHER OR NOT CAUSED BY OR RESULTING FROM THE NEGLIGENCE OF SELLER AND/OR THE MANUFACTURER OF THE PRODUCT, UNLESS SPECIFICALLY PROVIDED HEREIN. IN ADDITION, THIS WARRANTY SHALL NOT APPLY TO ANY PRODUCTS OR PORTIONS THEREOF WHICH HAVE BEEN SUBJECT TO ABUSE, MISUSE, IMPROPER INSTALLATION, MAINTENANCE, OR OPERATION, ELECTRICAL FAILURE OR ABNORMAL CONDITIONS, AND TO PRODUCTS WHICH HAVE BEEN TAMPERED WITH, ALTERED, MODIFIED, REPAIRED, REWORKED BY ANYONE NOT APPROVED BY SELLER, OR USED IN ANY MANNER INCONSISTENT WITH THE PROVISIONS OF THE "CAUTIONARY STATEMENT" ABOVE OR ANY INSTRUCTIONS OR SPECIFICATIONS PROVIDED WITH OR FOR THE PRODUCT. 05/03/21 REV

Distributed by:



**KURIYAMA**  
OF AMERICA, INC.

### HEADQUARTERS, SALES OFFICE AND WAREHOUSE

360 E. State Parkway, Schaumburg, IL 60173-5335  
Phone: (847) 755-0360 • Toll-free Fax: (800) 800-0320  
International Fax: (847) 885-0996



[kuriyama.com](http://kuriyama.com)



[sales@kuriyama.com](mailto:sales@kuriyama.com)



The trademarks contained in this publication are trademarks of Kuriyama of America, Inc.

©2023 Kuriyama of America, Inc. All rights reserved.

## CONTACT OUR SALES/WAREHOUSE LOCATIONS BELOW WHICH SERVE YOUR AREA

### SOUTHWEST WAREHOUSE

**KURIYAMA OF AMERICA, INC.**  
- HOUSTON  
200 Portwall Street, Suite 100  
HOUSTON, TX 77029  
Phone: (713) 674-8212  
Toll Free Phone: (800) 501-6808  
FAX: (713) 674-5214  
Toll Free FAX: (800) 800-5214  
E-Mail: [sales@kuriyama.com](mailto:sales@kuriyama.com)

### WESTERN WAREHOUSE

**KURIYAMA OF AMERICA, INC.**  
- RENO  
12910 Old Virginia Road, Suite 100  
Reno, NV 89512  
Phone: (562) 941-4507  
FAX: (562) 941-8940  
Toll-Free FAX: (800) 326-8940  
E-Mail: [sales@kuriyama.com](mailto:sales@kuriyama.com)

### SOUTHEAST WAREHOUSE

**FORTNEY SALES CO., INC.**  
4221 Cantrell Road NW  
Acworth, GA 30101  
Phone: (770) 427-6528  
FAX: (770) 423-9249  
Toll Free FAX: (800) 423-9249  
Web Site: [www.fortneysales.com](http://www.fortneysales.com)  
E-Mail: [sales@fortneysales.com](mailto:sales@fortneysales.com)

### EASTERN WAREHOUSE

**EASTERN RUBBER & PLASTICS CO., INC.**  
100 Goldman Dr.  
Plumsted Industrial Park  
Cream Ridge, NJ 08514  
Phone: (609) 758-0100  
FAX: (609) 758-0102  
Toll Free FAX: (800) 445-7138  
Web Site: [www.easternrubber.com](http://www.easternrubber.com)  
E-Mail: [sales@easternrubber.com](mailto:sales@easternrubber.com)

### IN MEXICO:

**KURIYAMA DE MÉXICO S DE RL DE CV**  
Av Jose Palomo Martinez No 520-20 Bodega 5  
Parque Industrial Omolap  
Apodaca, N.I. CP:66633, México  
Telefonos: (81) 1086-1870 0 71  
Internet: [www.kuriyama.com.mx](http://www.kuriyama.com.mx)  
[www.kuriyama.com](http://www.kuriyama.com)  
Correo Electronico: [servicioalcliente@kuriyama.com](mailto:servicioalcliente@kuriyama.com)

KKNPUCA0823